

SUPPORTING INFORMATION

[(WR)₈WKβA]-Doxorubicin Conjugate: A Delivery System to Overcome Multi-Drug Resistance against Doxorubicin

Khalid Zoghebi^{1,2}, Hamidreza Montazeri Aliabadi,¹ Rakesh Kumar Tiwari,^{1,*} Keykavous Parang^{1,*}

¹Center for Targeted Drug Delivery, Department of Biomedical and Pharmaceutical Sciences, Chapman University School of Pharmacy, Harry and Diane Rinker Health Science Campus, Irvine, CA 92618, United States

²Department of Pharmaceutical Chemistry, College of Pharmacy, Jazan University, Jazan 82826, Saudi Arabia

*Corresponding Authors

Keykavous Parang, Pharm.D., Ph.D.
Chapman University School of Pharmacy
Harry and Diane Rinker Health Science Campus
#262, 9401 Jeronimo Road
Irvine, CA 92618, USA
Tel: (714) 516-5489. Fax: (714) 516-5481
E-mail: parang@chapman.edu

Rakesh K. Tiwari, Ph.D.
Chapman University School of Pharmacy
Harry and Diane Rinker Health Science Campus
#263, 9401 Jeronimo Road
Irvine, CA, 92618, U.S.A.
Tel: (714) 516-5483. Fax: (714) 516-5481
E-mail: tiwari@chapman.edu

Table of Contents

	Page
Cytotoxicity assay in heart cells (H9C2)	S3
Cellular internalization of [(WR) ₈ WKβA]-Dox conjugate using Confocal microscopy in heart cells (H9C2)	S4
Stability Results	S5
Hydrolysis Results	S6
Mass spectra for [(WR) ₈ WKβA] peptide	S7
Mass spectra for [(WR) ₈ WKβA]-Dox conjugate	S8
HPLC purity profile of [(WR) ₈ WKβA]-Dox conjugate	S9

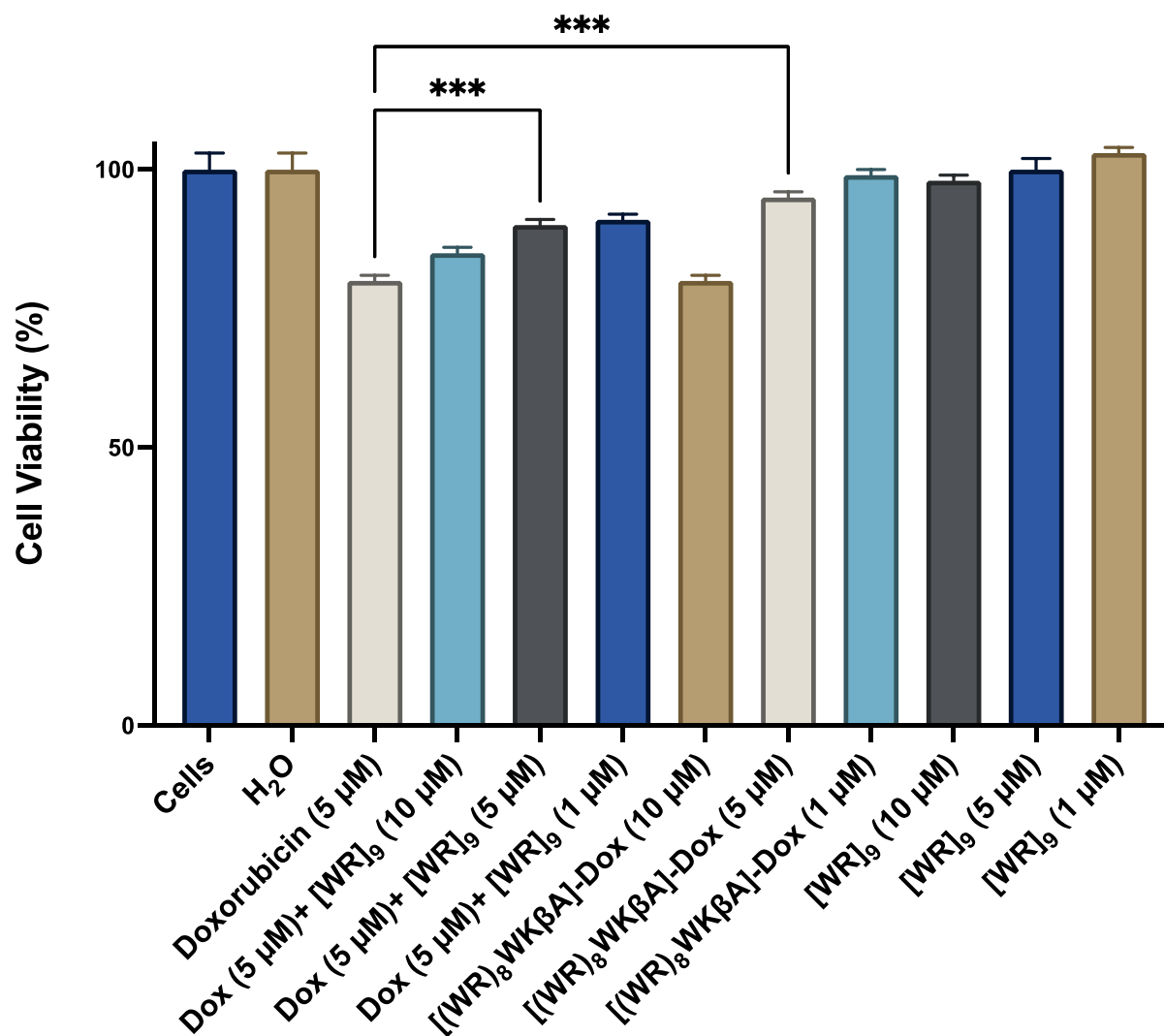


Figure S1. Inhibition of heart cells (H9C2) by free Dox (5 μM), [(WR)₈WKβA]-Dox, [WR]₉ + Dox, and [WR]₉ at 1, 5, and 10 μM. Results are mean ± SD (n = 3). (***)p<0.001 treatments at 5 μM vs. Ctrl (Dox) at 5 μM).

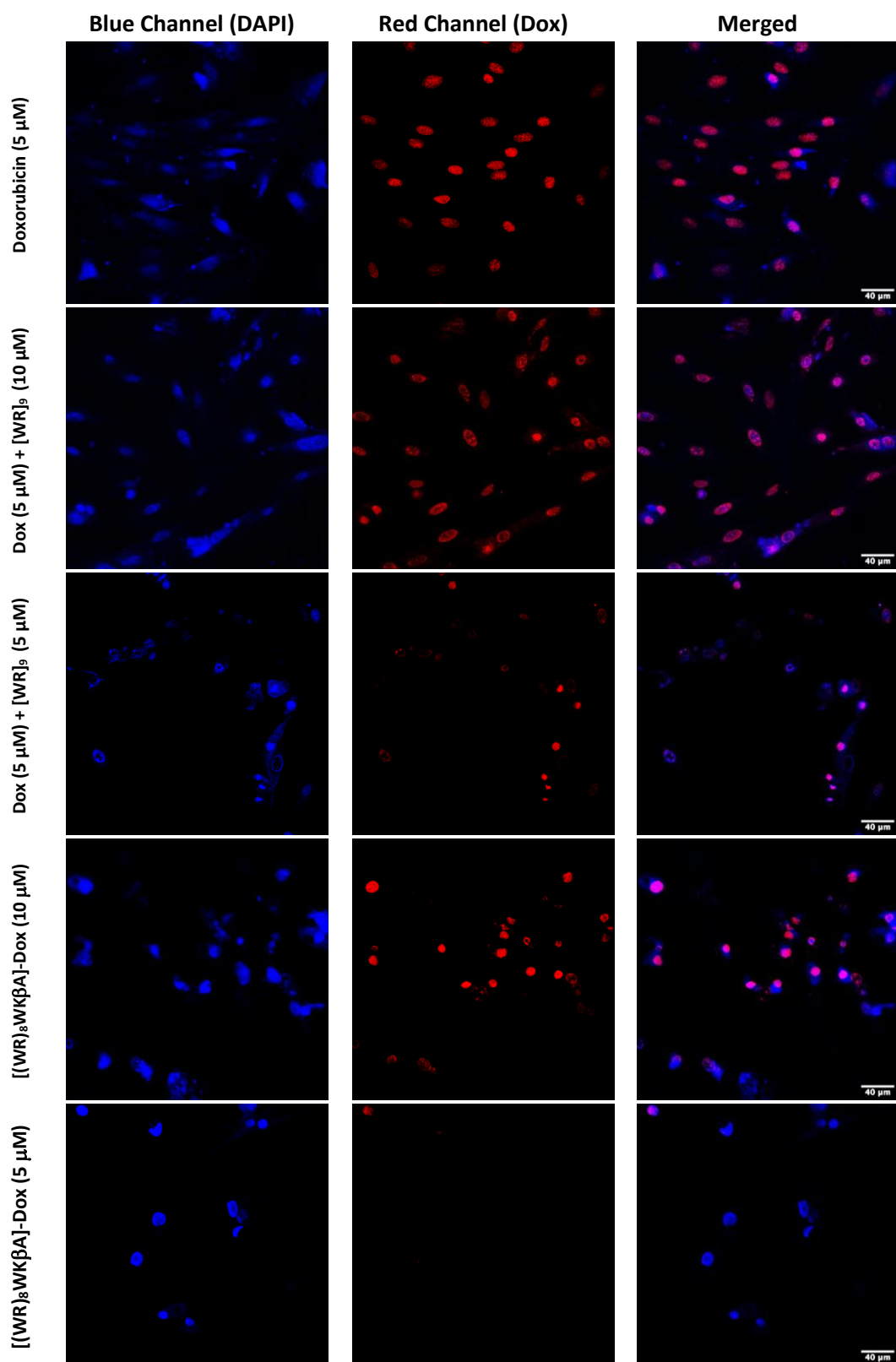


Figure S2. Confocal microscopy images of free Dox (5 μ M), [WR]₉ + Dox (1:1 and 1:2), or [(WR)₈WK β A]-Dox conjugate (5 and 10 μ M) after 24 h in H9C2 cell line.

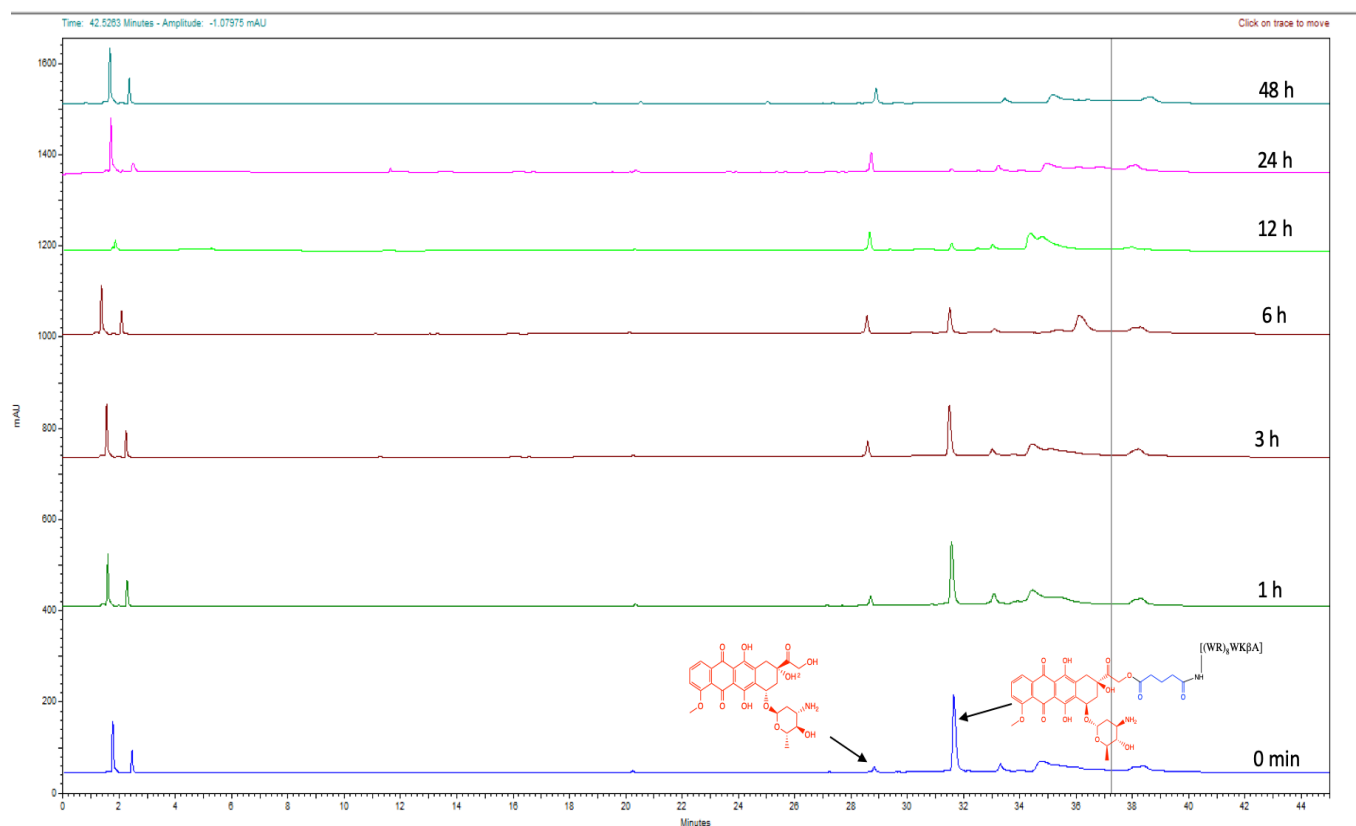


Figure S3. Stability of $[(WR)_8WK\beta A]$ -Dox conjugate at 5 μM in human plasma.

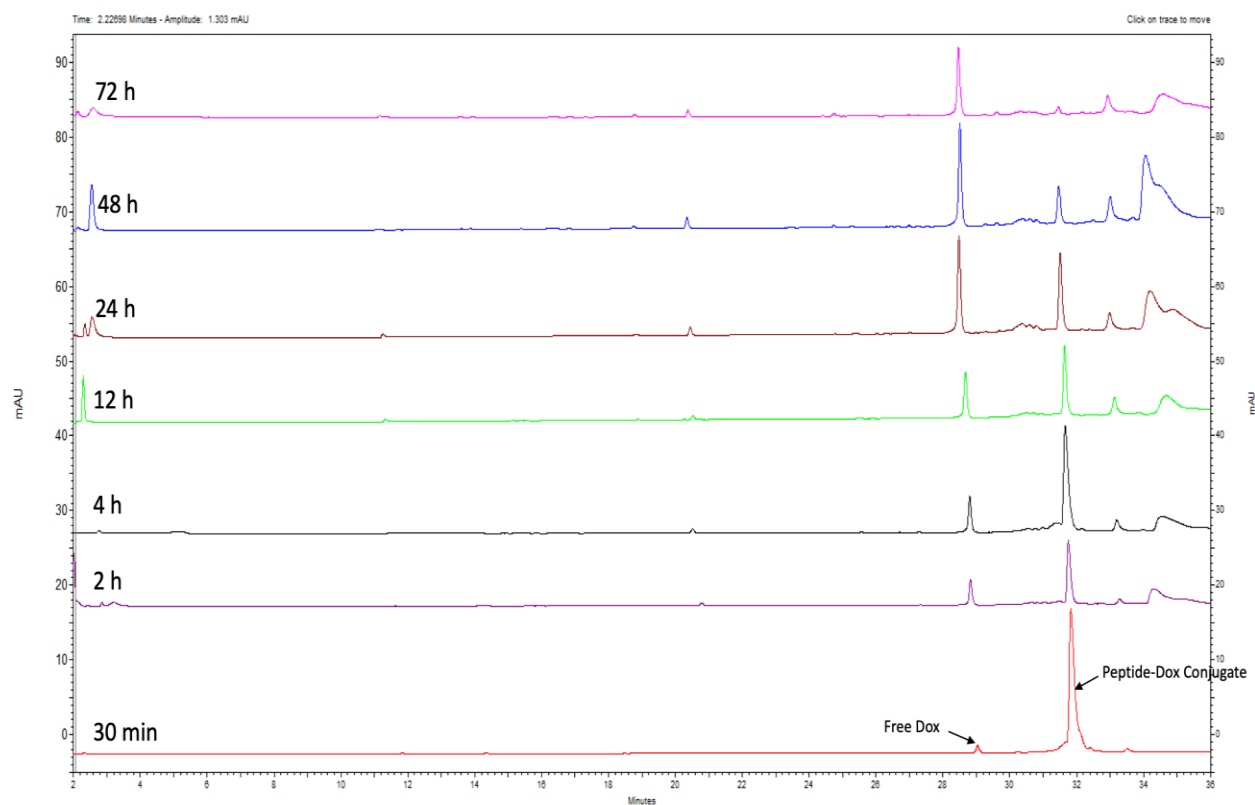


Figure S4. Intracellular release of free Dox from $[(WR)_8WK\beta A]$ -Dox conjugate.

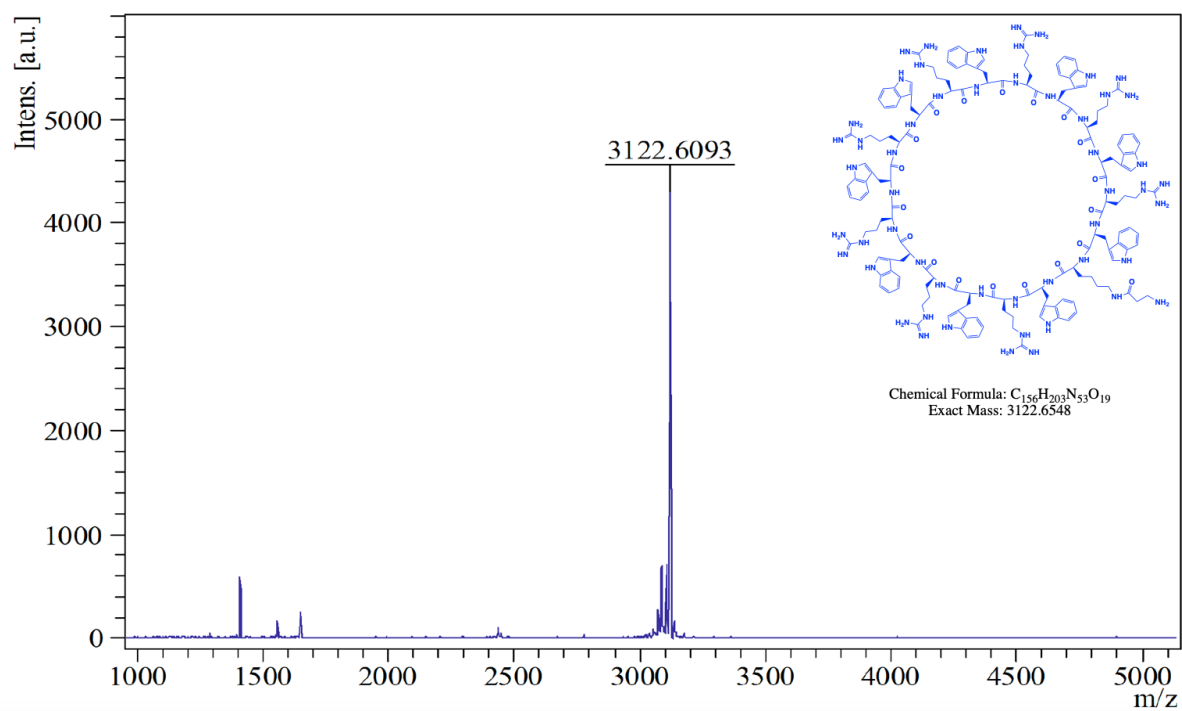


Figure S5. Mass spectra of [(WR)₈WKβA] peptide.

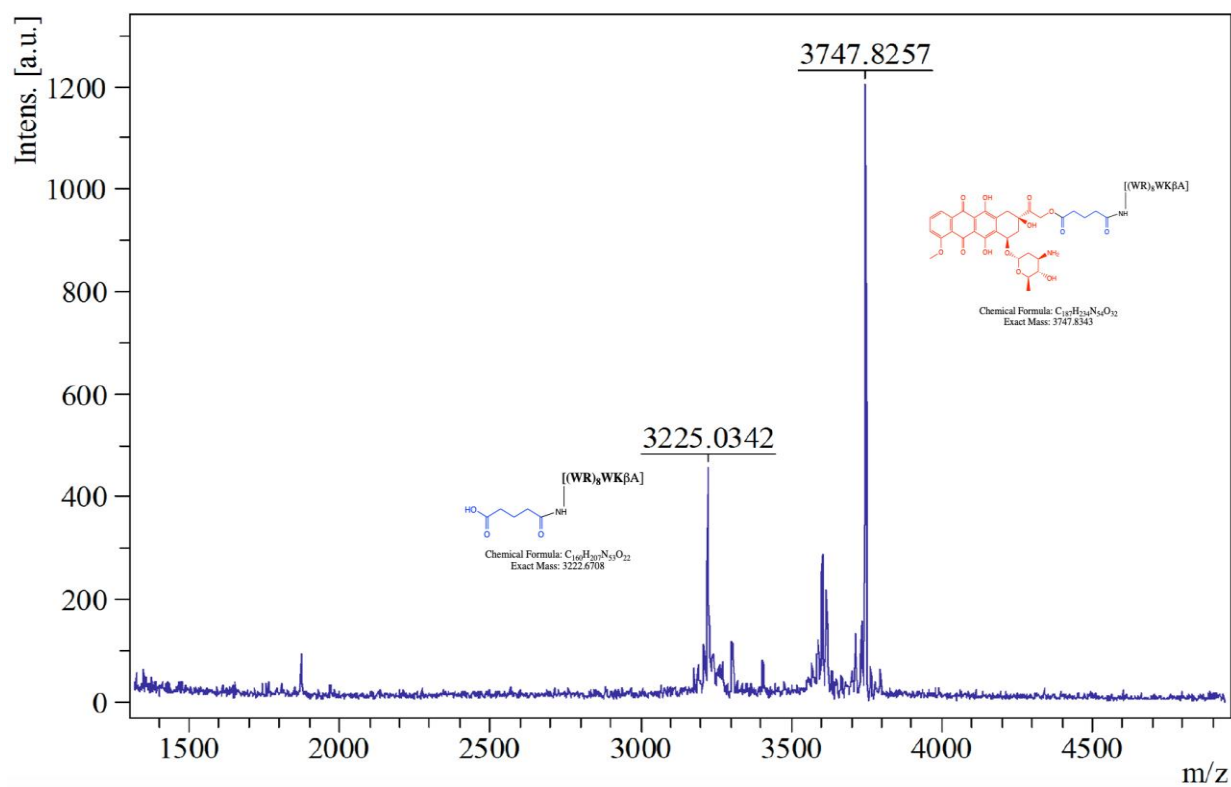


Figure S6. Mass spectra of $[(WR)_8WK\beta A]$ -Dox conjugate.

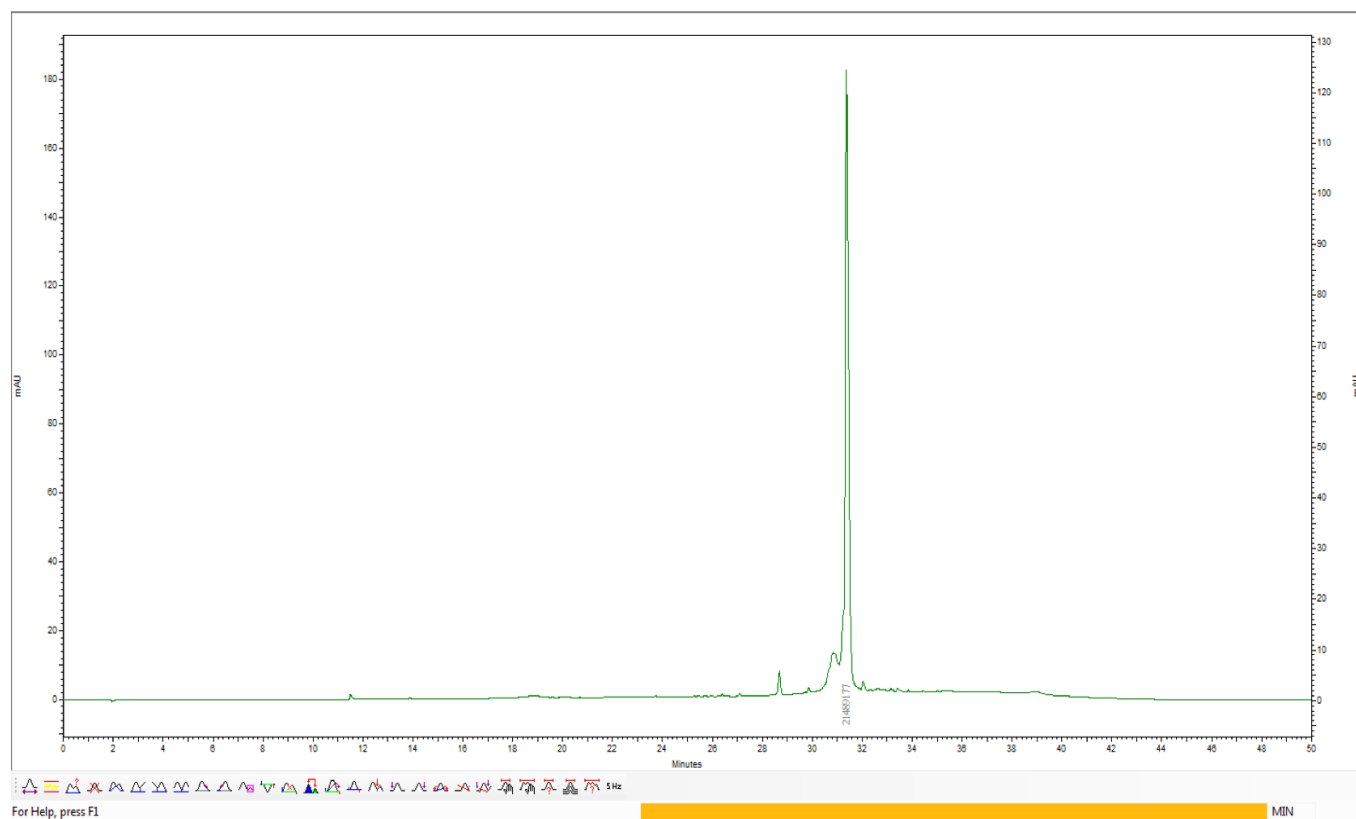


Figure S7. Analytical HPLC purity profile of [(WR)₈WKβA]-Dox conjugate.