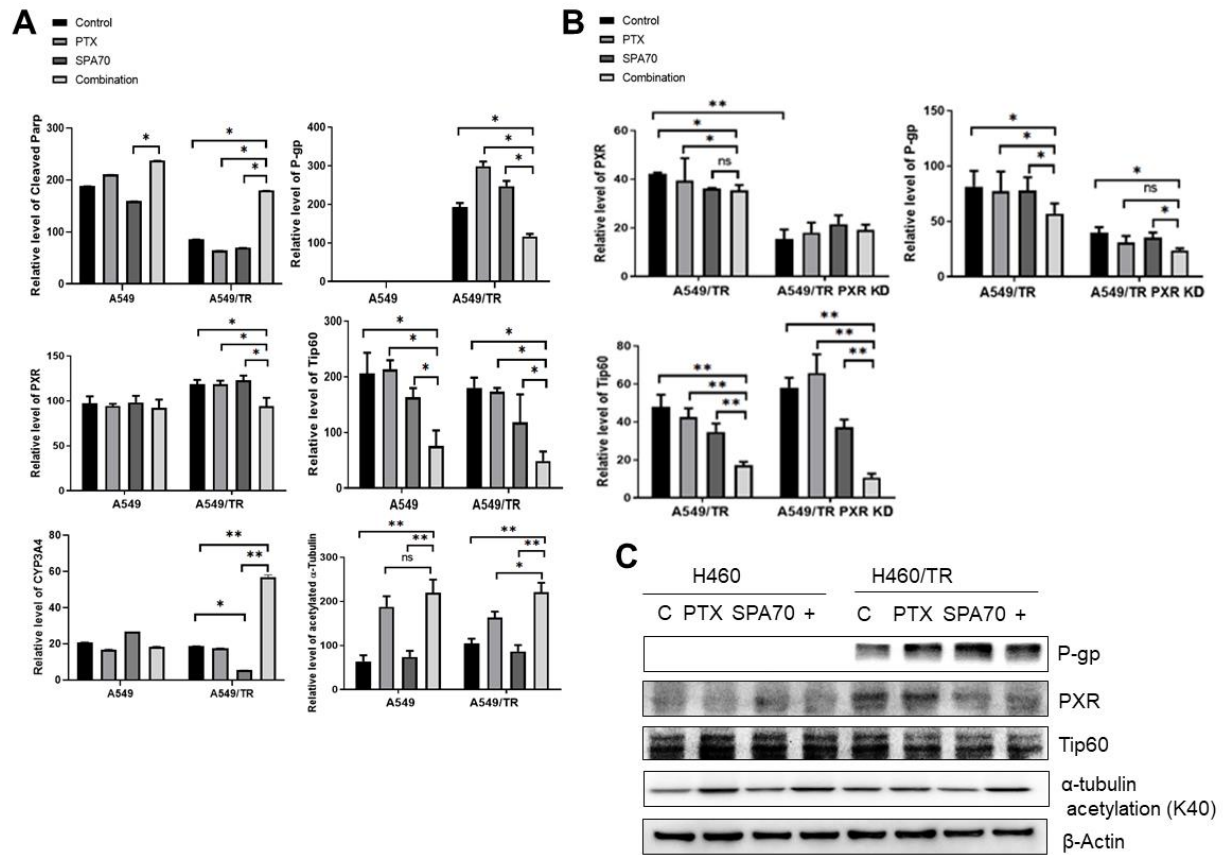
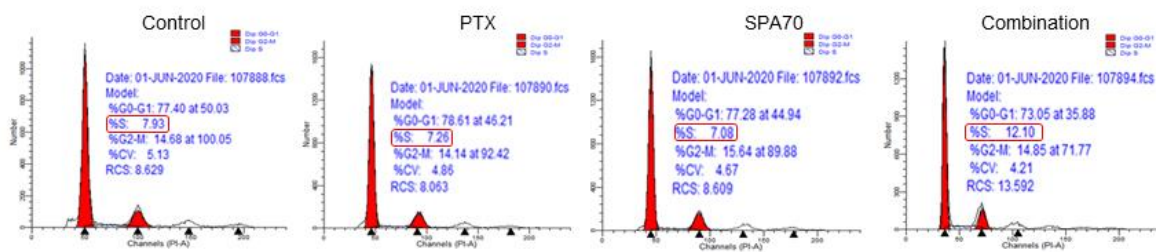


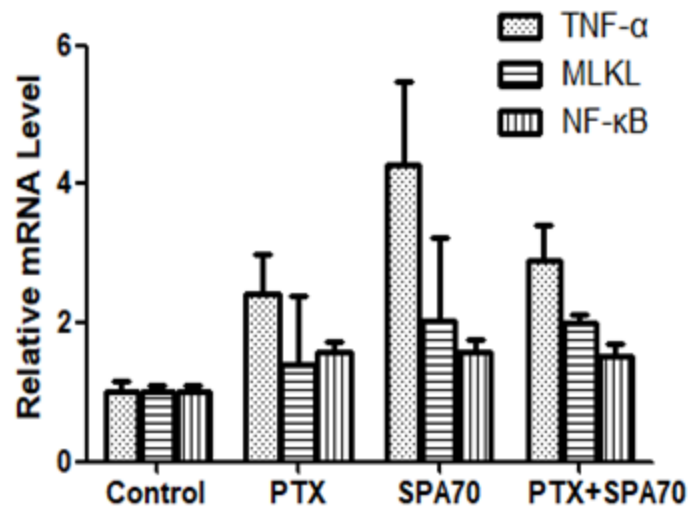
Supplemental Figure S1. The cell colony formation and migration, invasion effects of PTX, SPA70 and combination on H460, H460/TR cells. Experiment methods and statistical analysis as described in Figure 1. *, $p < 0.05$; **, $p < 0.01$, compared with indicated groups. The photographs were taken by microscopy (200 \times).



Supplemental Figure S2. PXR protein expression negatively correlated with Tip60 protein expression in H460 and H460/TR cells. **A**, Quantification of indicated treatment signaling pathway in parental A549 and PTX-resistant A549 cells in Figure 3. *, $p < 0.05$; **, $p < 0.01$, compared with indicated groups. **B**, The cells were treated with 2 nM PTX, 10 μ M SPA70, or combination for 48 h ($n = 3$).



Supplemental Figure S3. Flow cytometry (FACS) analysis using PI staining showed combination treatment induced S phase arrest in A549/TR cells after adding 2 nM PTX, 10 μ M SPA70, or combined regimen for 48 h.



Supplemental Figure S4. SPA70 and combination regimen induced necroptosis and exacerbated cell death. Cells were treated with 2 nM PTX, 10 μ M SPA70, or combined regimen for 48 h. RT-PCR was applied to determine the mRNA level of TNF- α , MLKL and NF- κ B expression on all treatment groups.