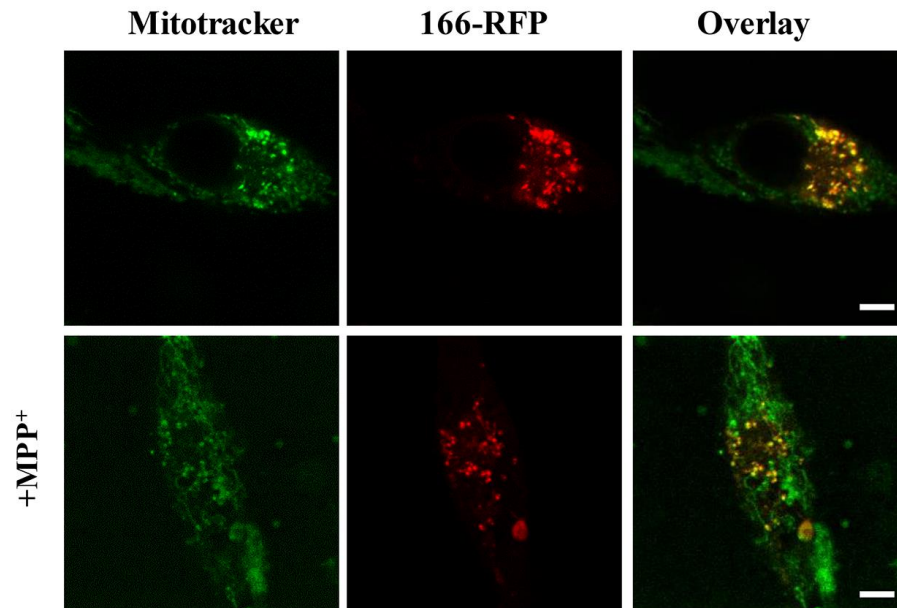


Supplementary Figure S1. Observation of LC3-mCherry puncta and autolysosome. (A) SH-SY5Y cells and 166-1[#] cells transfected with LC3-mCherry plasmids were untreated or treated with 1 mM MPP⁺ for 24 h, then fixed and stained with LAMP1 antibody, and were imaged by confocal microscopy. Scale bars, 5 μ m. (B) Statistical analysis of the number of LC3-mCherry dots and the colocalized dots of LC3-mCherry with LAMP1 per cell. *** $p < 0.001$



Supplementary Figure S2. TMEM166 is located in mitochondria. Observation of the co-localization of mitochondria and TMEM166 molecules in SH-SY5Y cells transfected TMEM166-RFP plasmid with or without MPP⁺ treatment (1 mM, 24 h). Note that TMEM166 appears to have linear shapes similar to that of mitochondria. Scale bars, 5 μ m.