

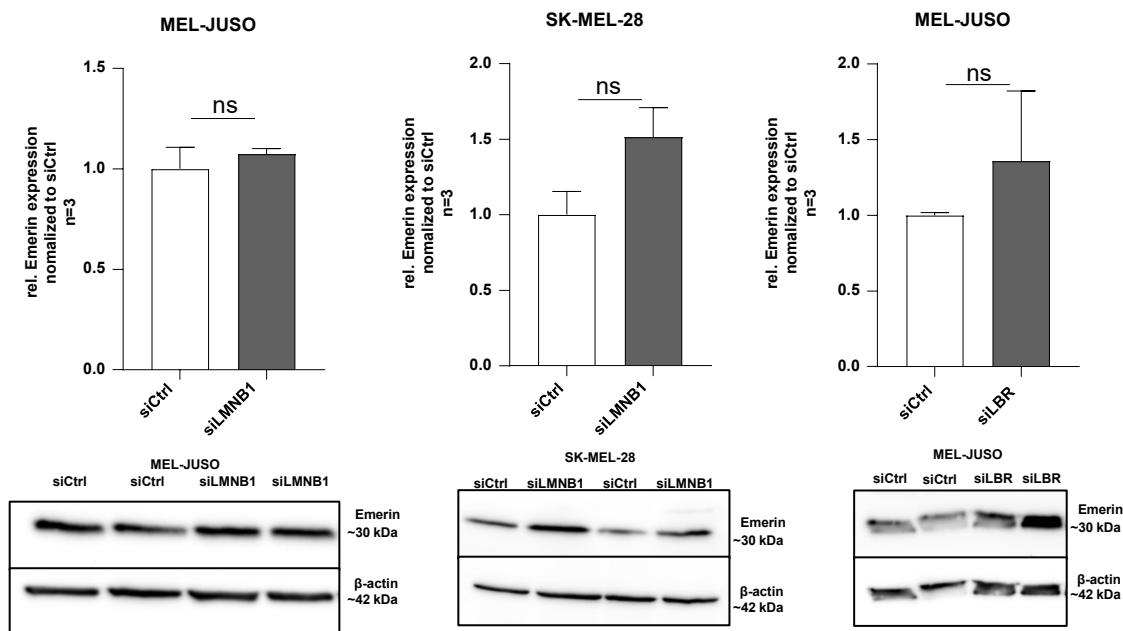
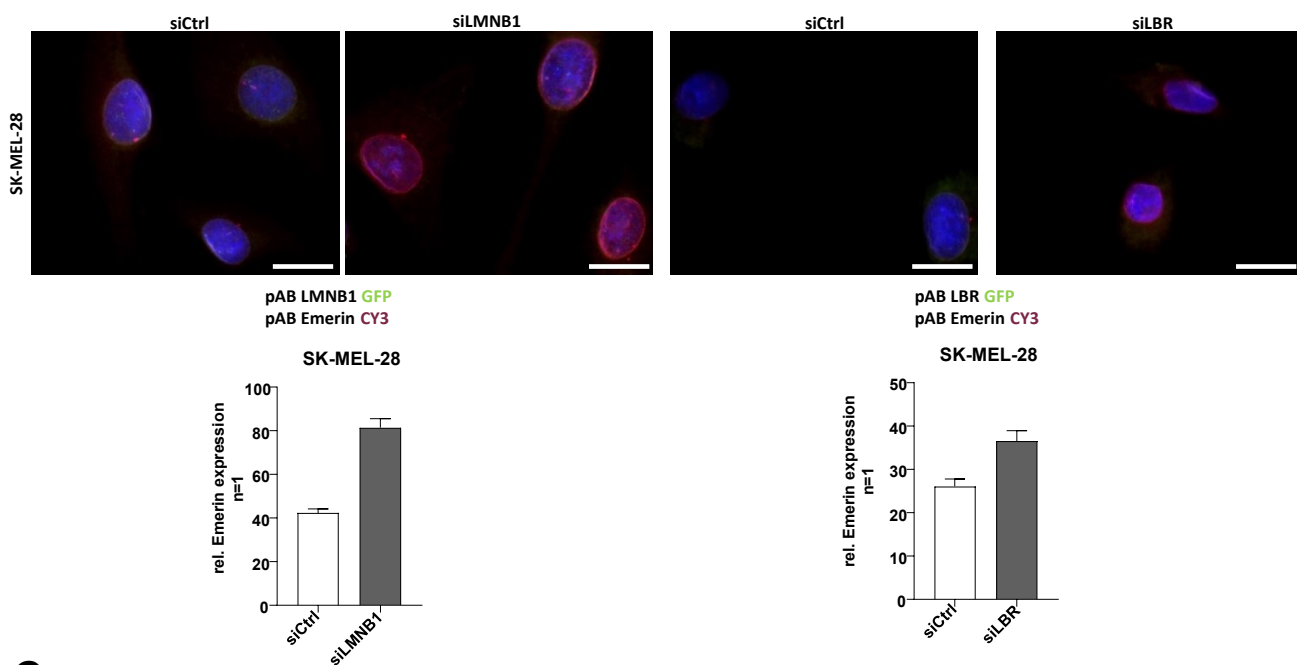
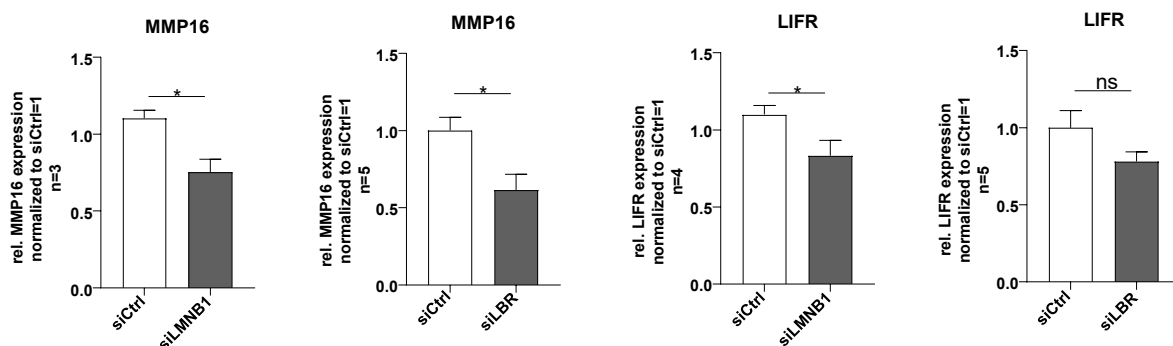
A**B****C**

Figure S2: (A) Western Blot analysis of Emerin protein expression in melanoma cell lines MEL-JUSO and/or SK-MEL-28 treated with siLMNB1 and siLBR for 72 h (Student's t-test, Bars represent mean+SEM). **(B)** Immunofluorescent staining of Emerin expression (CY3) in SK-MEL-28 transfected with siLMNB1 (GFP) or siLBR (GFP) and siCtrl for 72 h (n=1, Bars represent mean ± SEM within the biological replicate). **(C)** Quantitative real-time PCR analysis of target genes expression due to LBR knockdown for 72 h in MEL-JUSO and SK-MEL-28 treated with siLMNB1 and siLBR for 72h (Student's t-test, Bars represent mean+SEM). (*= $p \leq 0.05$ and ns = not significant).