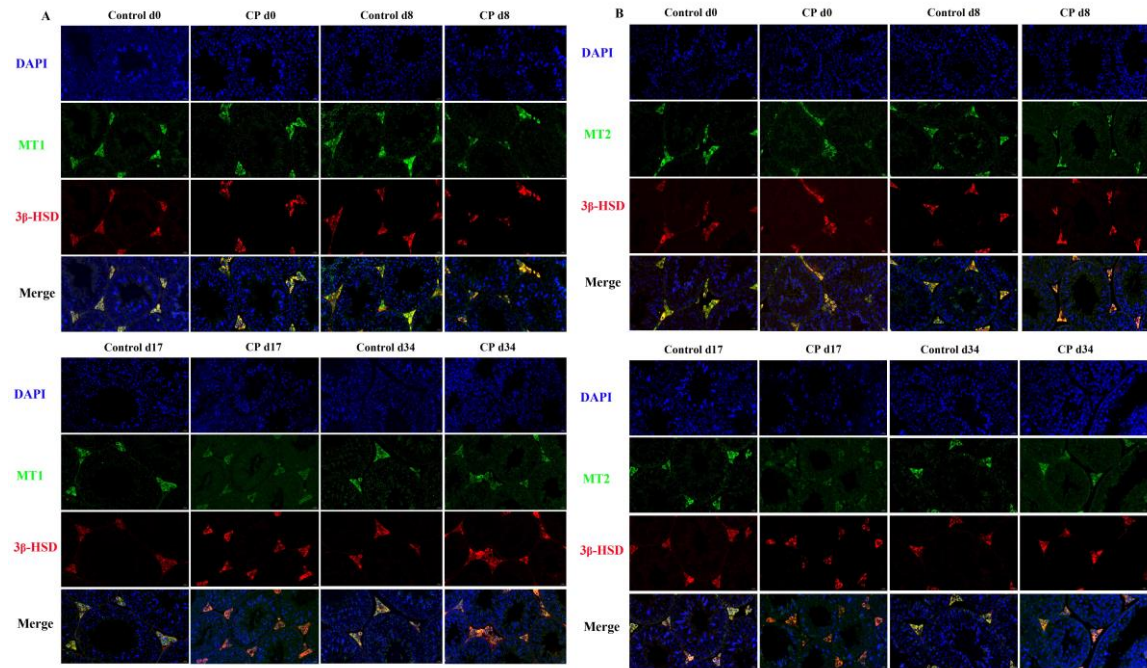


Supplementary Figure S1. Localization and expression of MT1 and MT2 in testicular tissue. **(A)** Immunofluorescent pictures of MT1 and MT2 in human testicular tissue are representative. 3β-HSD was tagged with Alexa Fluor 594, while MT1/MT2 were tagged with Alexa Fluor 488. The nucleus was labeled with DAPI (scale bar = 20 μm). **(B)** Immunofluorescent pictures of MT1/MT2 in mouse testicular tissue. 3β-HSD was tagged with Alexa Fluor 488 or Alexa Fluor 594, while MT1/MT2 were tagged with Alexa Fluor 594 or Alexa Fluor 488. The nucleus was labeled with DAPI (scale bar = 20 μm).



Supplementary Figure S2. Localization and expression of MT1 and MT2 in mice during different recovery periods after cisplatin/non-cisplatin treatment. **(A)** Immunofluorescent pictures of MT1 in mouse testicular tissue are representative. 3β-HSD was tagged with red fluorescence, while MT1 was tagged with green fluorescence. The nucleus was labeled with DAPI (scale bar = 20 μm). **(B)** Immunofluorescent pictures of MT2 in mouse testicular tissue are representative. 3β-HSD was tagged with red fluorescence, while MT2 was tagged with green fluorescence. The nucleus was labeled with DAPI (scale bar = 20 μm).