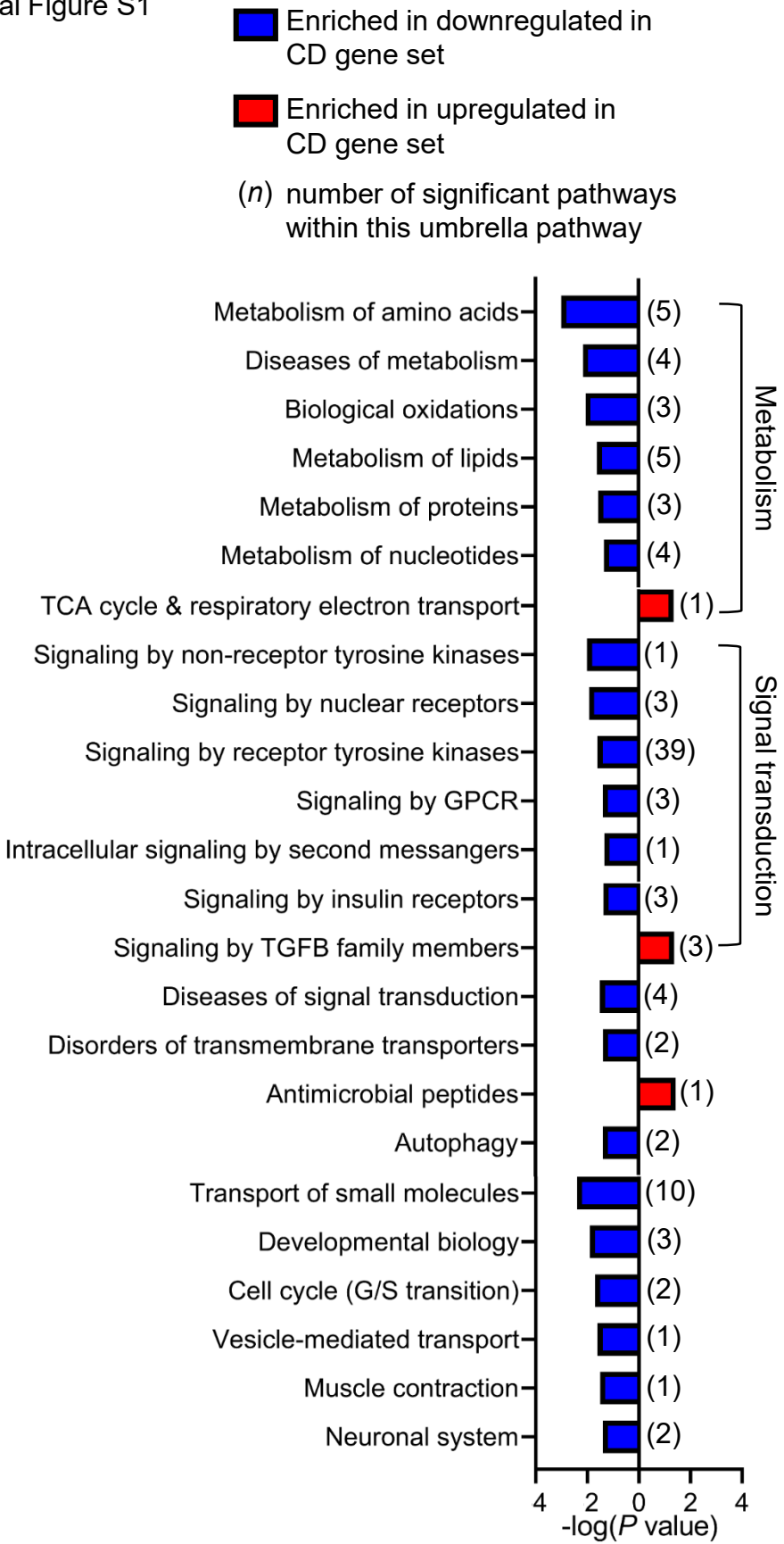
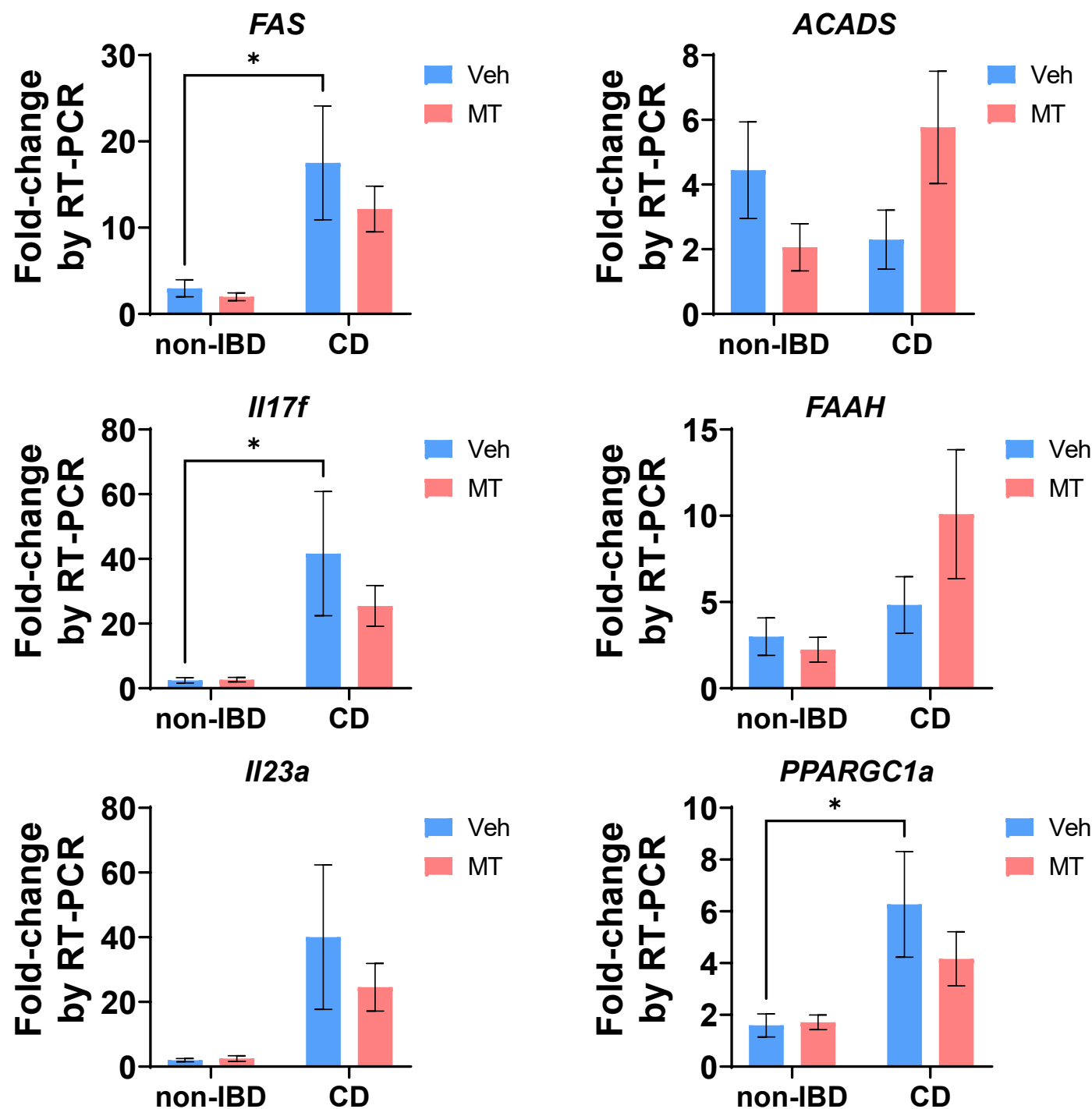


Supplemental Figure S1



Supplemental Figure S1. Significantly enriched gene signatures in CD vs non-IBD patients by Reactome analysis. General umbrella pathways are indicated by brackets. $P < 0.05$ was considered significant in pathway selection.



Supplemental Figure S2. RNA expression of several transcripts in human ileal mucosal biopsies by quantitative real time-PCR. Results are presented as mean \pm SEM of 9-10 non-IBD veh, 10-12 non-IBD MT, 8-12 CD veh, and 12-14 CD MT biopsies. * $P < 0.05$ by two-way ANOVA and Tukey's post-hoc test.