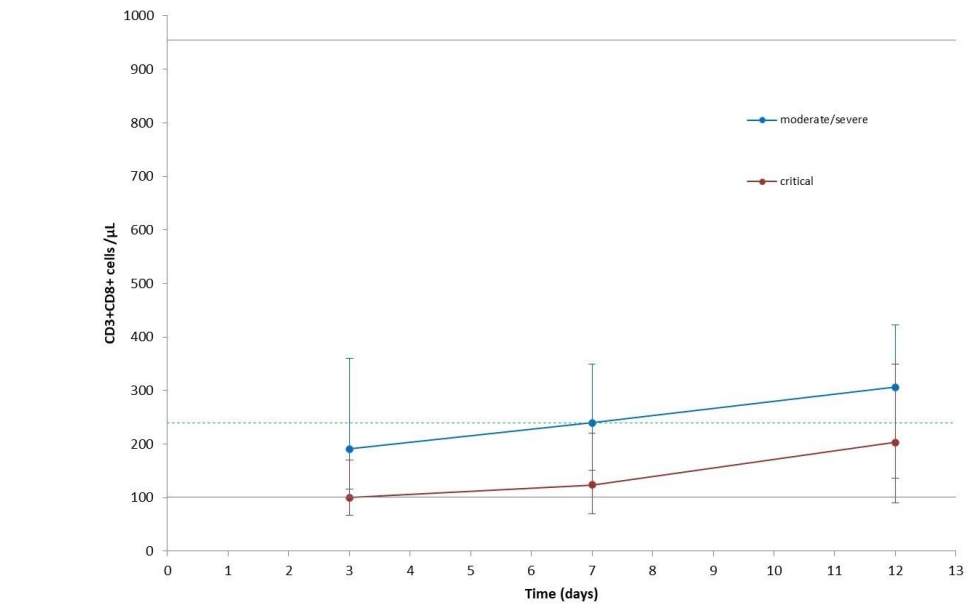


between groups *

within moderate / severe course *

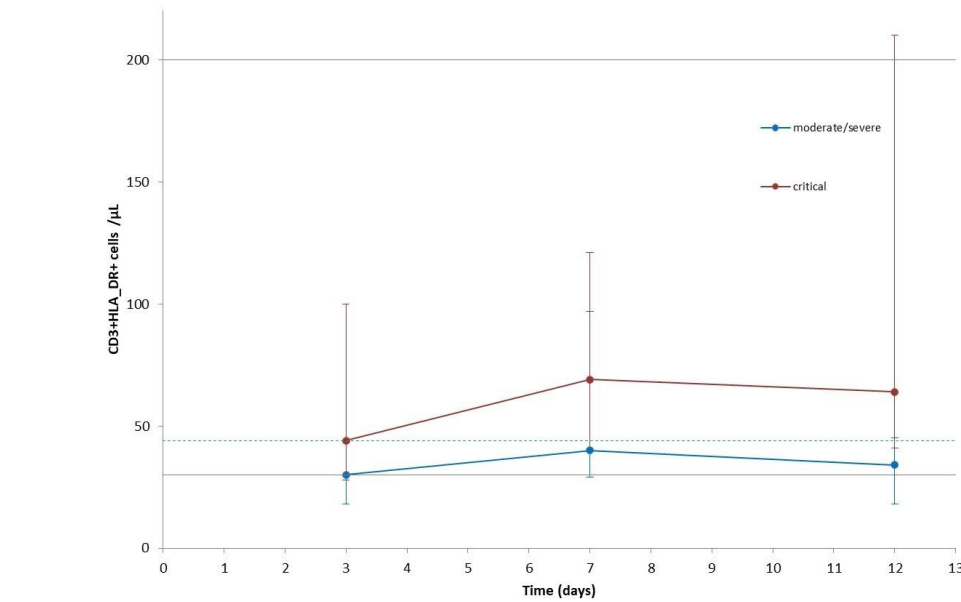
A
*p<0.05



between groups *

within critical course *

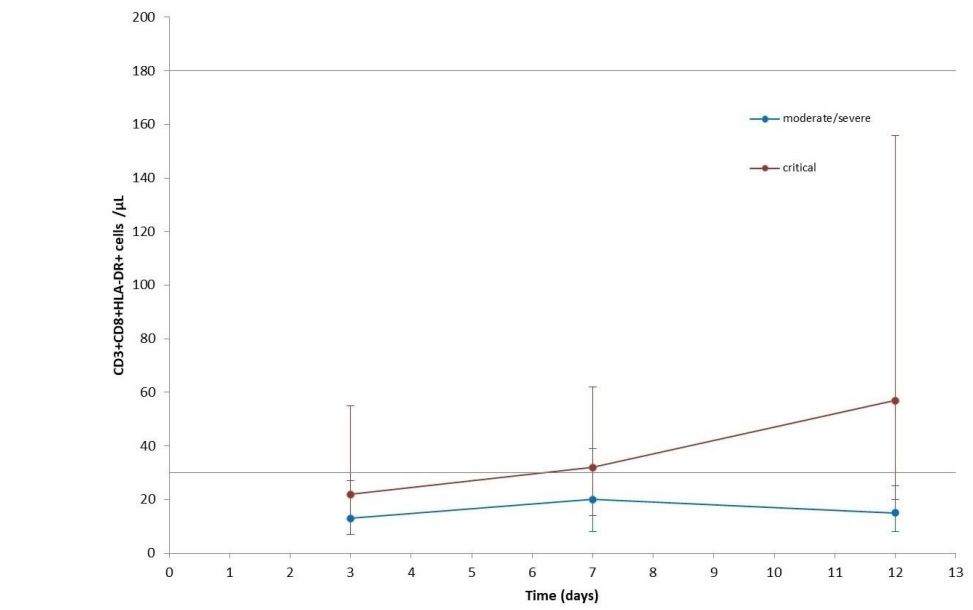
B
*p<0.05



between groups *

within critical course *

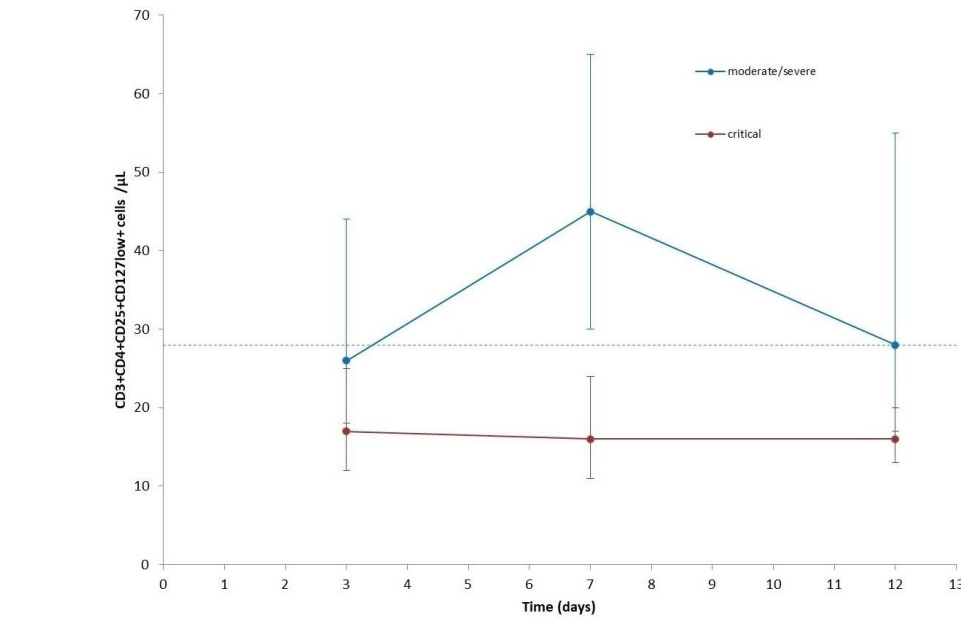
C
*p<0.05



between groups *

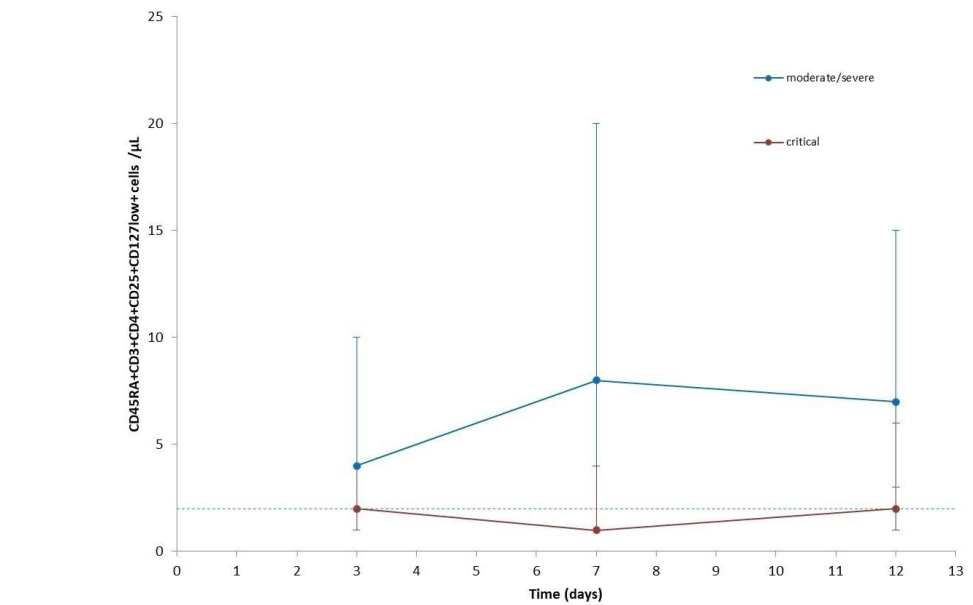
within critical course *

D
*p<0.05



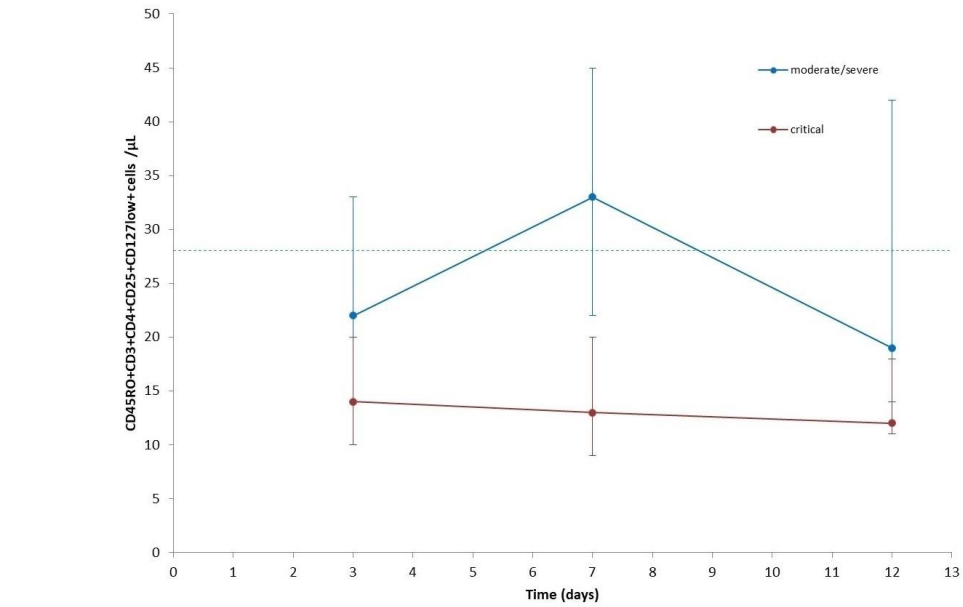
between groups *

E
*p<0.05



between groups *

F
*p<0.05

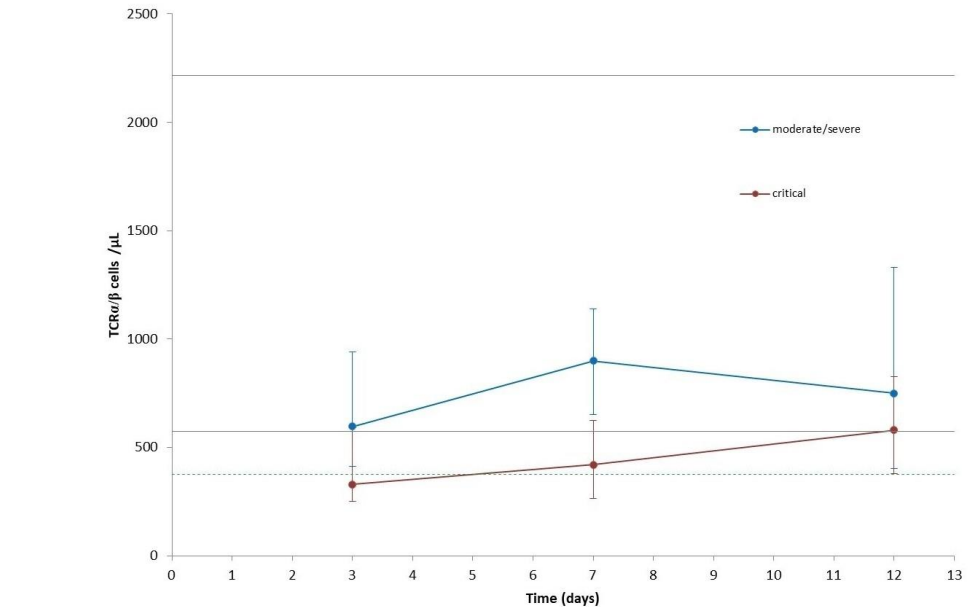


between groups

*

*

G
*p<0.05



between groups

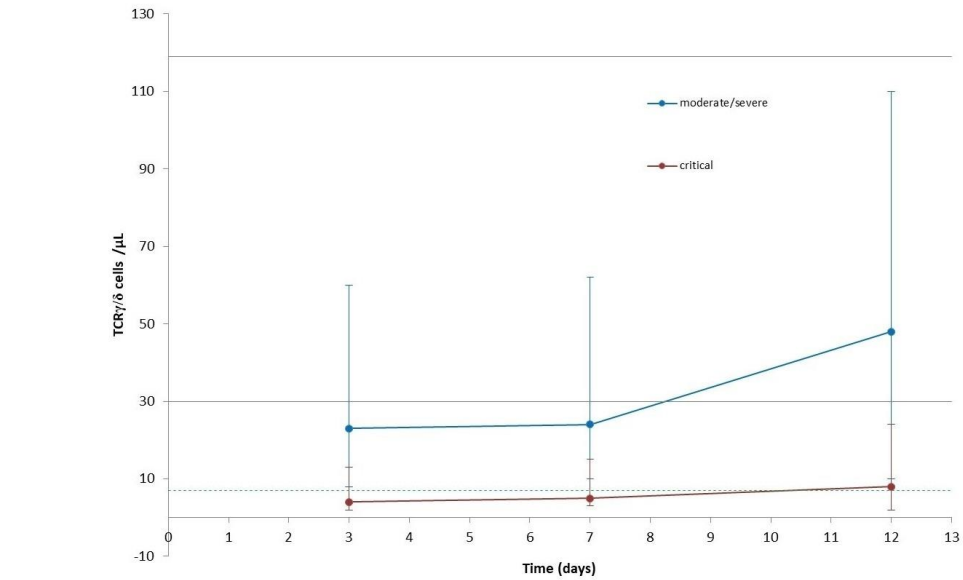
*

*

within critical course

*

H
*p<0.05

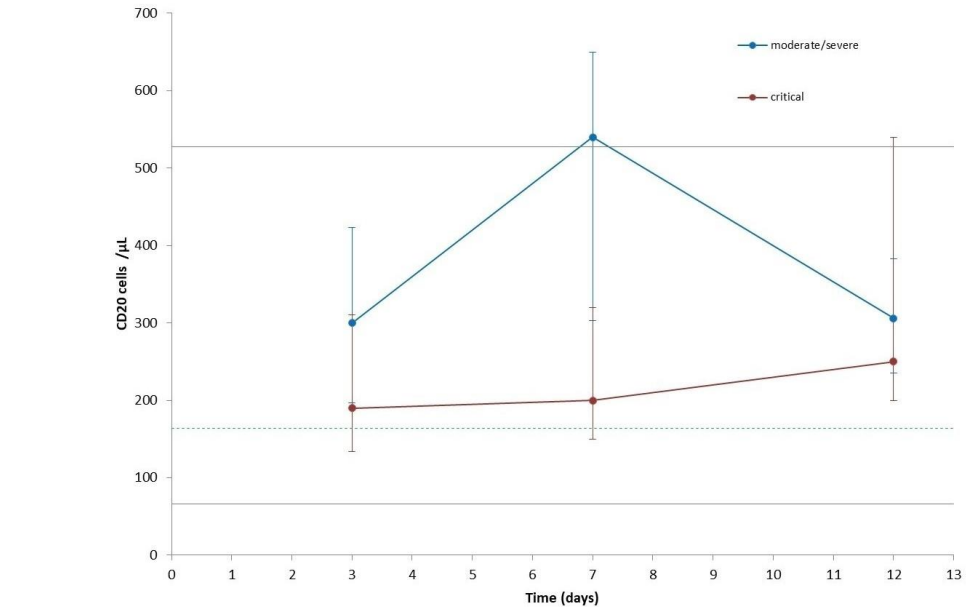


between groups

*

*

I
*p<0.05



between groups

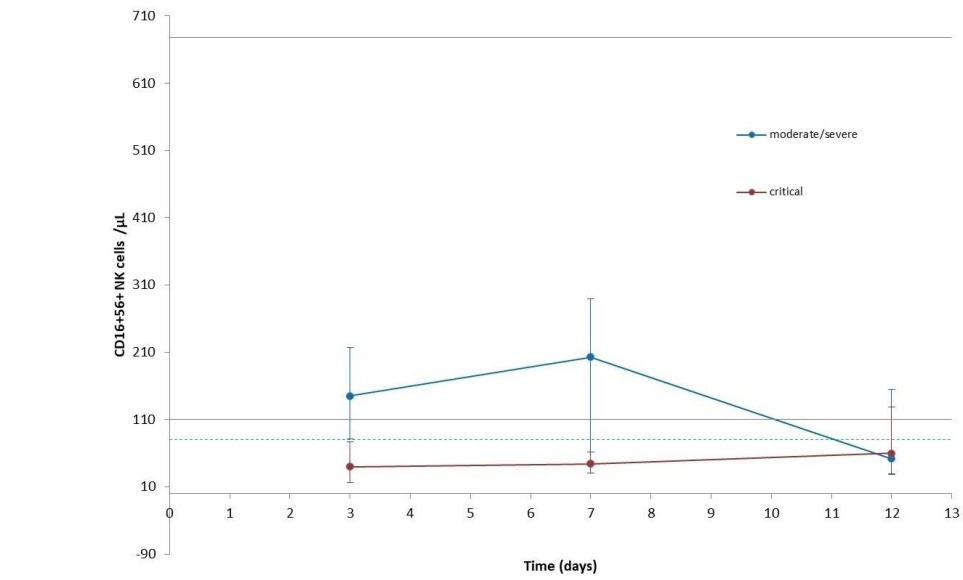
*

*

within critical course

*

J
*p<0.05

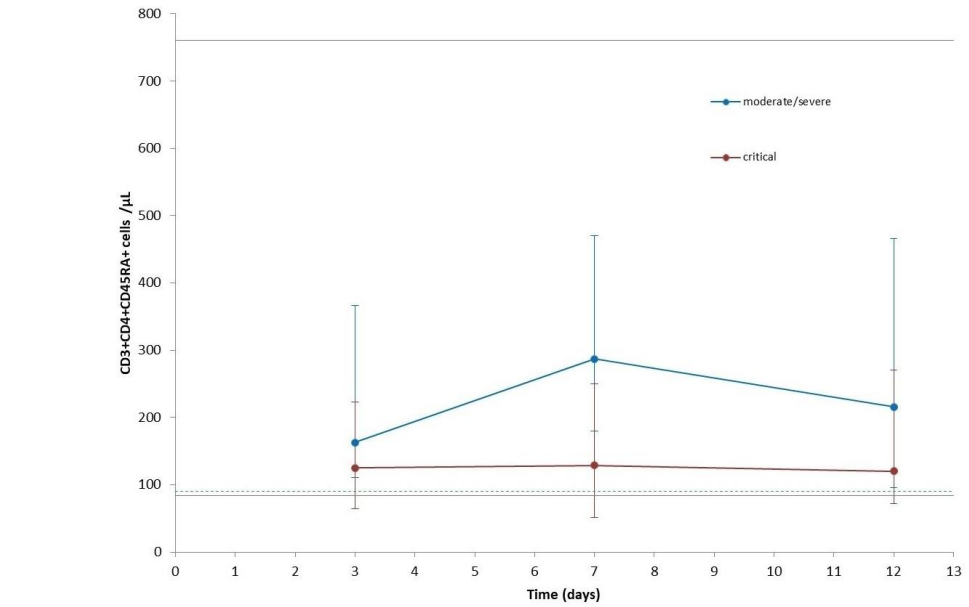


between groups

*

*

K
*p<0.05



between groups

*

*

L
*p<0.05

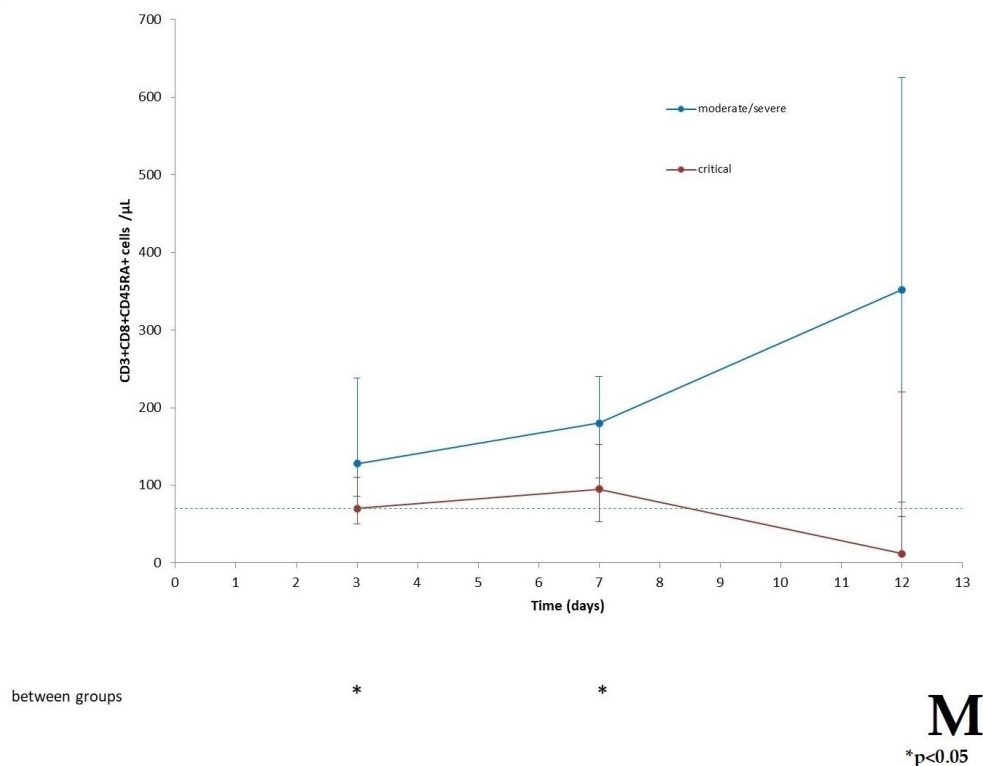


Figure S3. Changes in the counts of lymphocyte subpopulations during COVID-19.

- A** – Changes in Th cells (CD3+CD4+) during the course of SARS-CoV-2 infection in moderate/severe (blue line) versus critical (red line) COVID-19 patients. Statistical significance between studied groups and during the COVID-19 course in particular groups of patients marked with *.
- B** – Changes in Ts cells (CD3+CD8+) during the course of SARS-CoV-2 infection in moderate/severe (blue line) versus critical (red line) COVID-19 patients. Statistical significance between studied groups and during the COVID-19 course in particular groups of patients marked with *.
- C** – Changes in activated T cells (CD3+HLA-DR+) during the course of SARS-CoV-2 infection in moderate/severe (blue line) versus critical (red line) COVID-19 patients. Statistical significance between studied groups and during the COVID-19 course in particular groups of patients marked with *.
- D** – Changes in activated Ts cells (CD3+CD8+HLA-DR+) during the course of SARS-CoV-2 infection in moderate/severe (blue line) versus critical (red line) COVID-19 patients. Statistical significance between studied groups and during the COVID-19 course in particular groups of patients marked with *.
- E** – Changes in Treg cells (CD3+CD4+CD25+CD127low+) during the course of SARS-CoV-2 infection in moderate/severe (blue line) versus critical (red line) COVID-19 patients. Statistical significance between studied groups marked with *.
- F** – Changes in naïve Treg cells (CD45RA+CD3+CD4+CD25+CD127low+) during the course of SARS-CoV-2 infection in moderate/severe (blue line) versus critical (red line) COVID-19 patients. Statistical significance between studied groups marked with *.
- G** – Changes in induced Treg cells (CD45RO+CD3+CD4+CD25+CD127low+) during the course of SARS-CoV-2 infection in moderate/severe (blue line) versus critical (red line) COVID-19 patients. Statistical significance between studied groups marked with *.
- H** – Changes in TCRα/β during the course of SARS-CoV-2 infection in moderate/severe (blue line) versus critical (red line) COVID-19 patients. Statistical significance between studied groups and during the COVID-19 course in particular groups of patients marked with *.
- I** – Changes in TCRγ/δ during the course of SARS-CoV-2 infection in moderate/severe (blue line) versus critical (red line) COVID-19 patients. Statistical significance between studied groups marked with *.
- J** – Changes in activated CD20+ B cells during the course of SARS-CoV-2 infection in moderate/severe (blue line) versus critical (red line) COVID-19 patients. Statistical significance between studied groups and during the COVID-19 course in particular groups of patients marked with *.
- K** – Changes in CD16+CD56+ NK cells during the course of SARS-CoV-2 infection in moderate/severe (blue line) versus critical (red line) COVID-19 patients. Statistical significance between studied groups marked with *.
- L** – Changes in naïve Th cells (CD3+CD4+CD45RA+) during the course of SARS-CoV-2 infection in moderate/severe (blue line) versus critical (red line) COVID-19 patients. Statistical significance between studied groups patients marked with *.
- M** – Changes in naïve Ts cells (CD3+CD8+CD45RA+) during the course of SARS-CoV-2 infection in moderate/severe (blue line) versus critical (red line) COVID-19 patients. Statistical significance between studied groups marked with *.