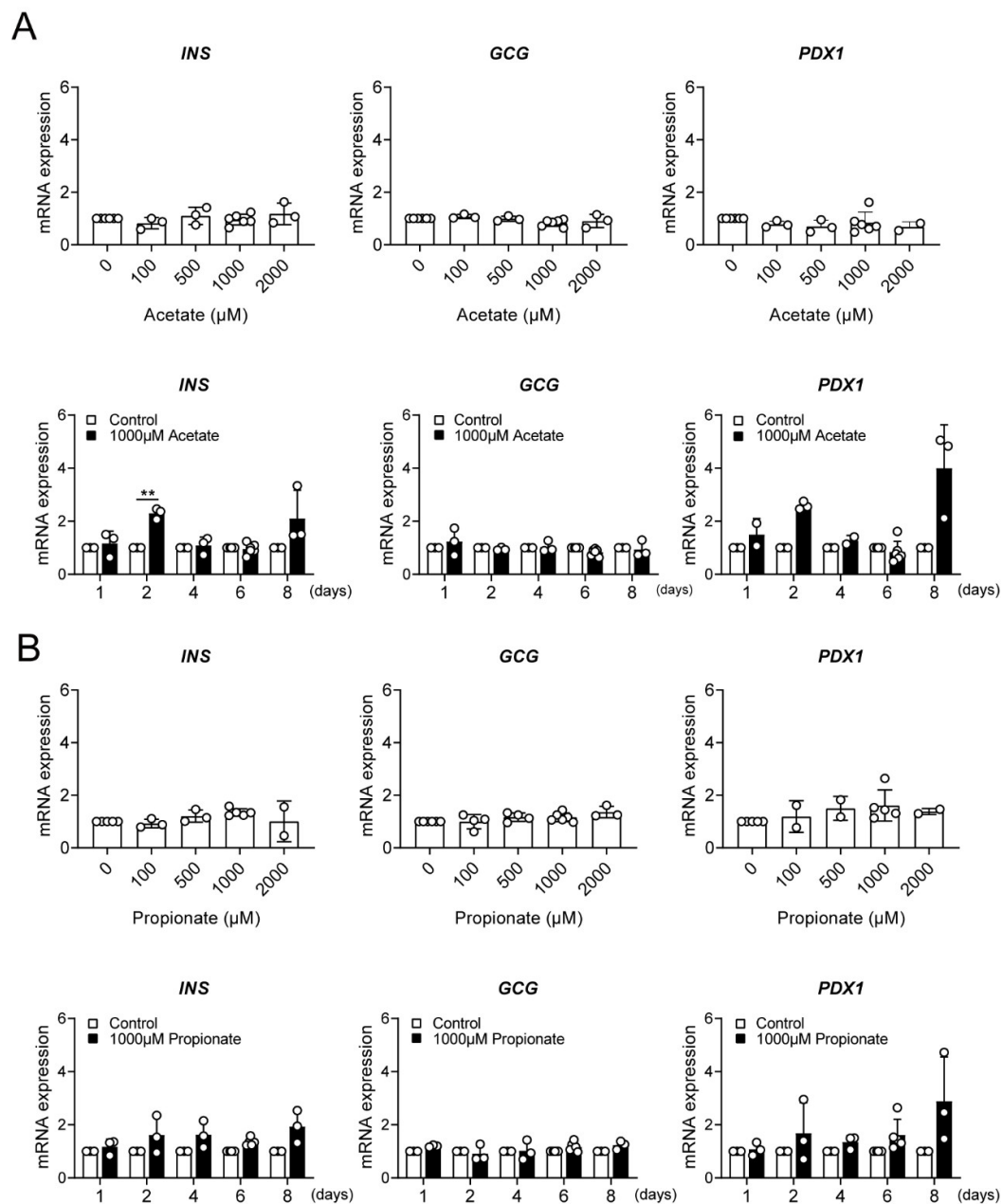


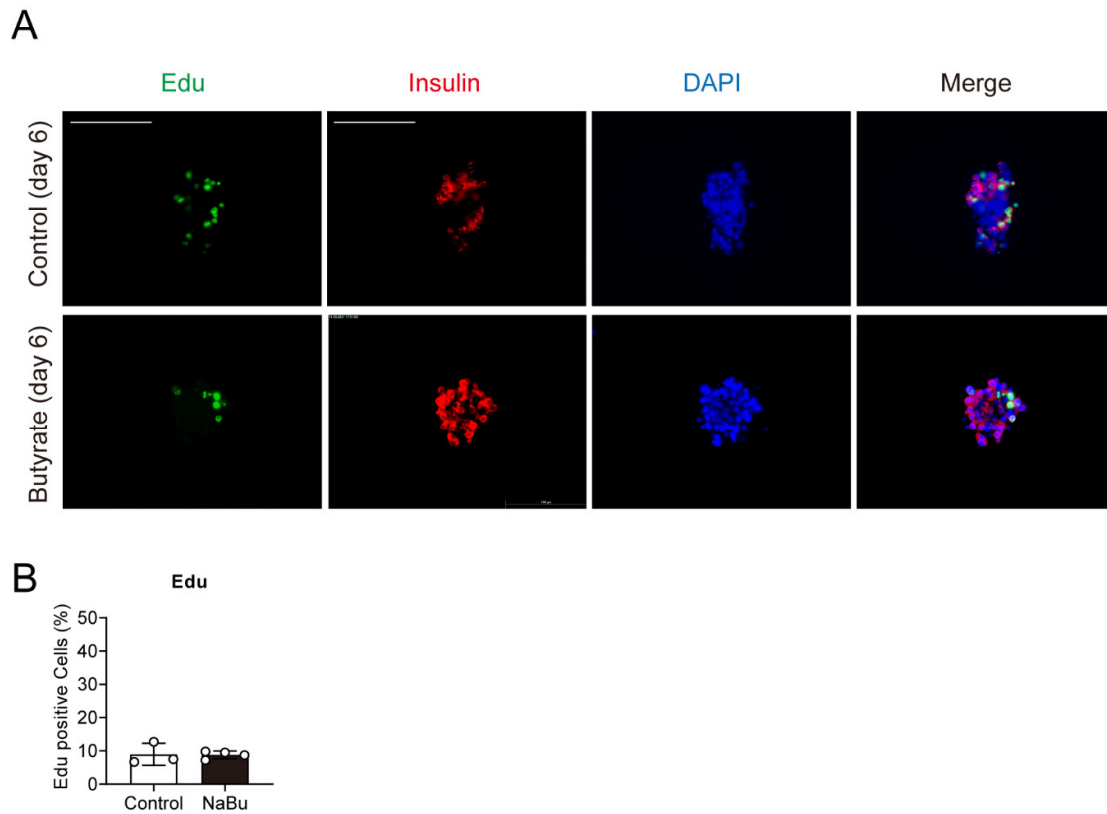
Supplements

Supplemental Figure 1



Supplemental Figure S1. Relative gene expression of insulin (*INS*), glucagon (*GCG*) and *PDX1* detected by RT-qPCR in NPICCs after incubation with acetate (10–2000 μM) or propionate (10–2000 μM) for six days and 1000 μM acetate or 1000 μM propionate for one to eight days. (**A and B**) Time course and dose-dependence of acetate and propionate treatment. Cells without butyrate exposure were used as controls. Data from three to six independent experiments are presented as mean \pm SD. $**p < 0.01$ vs. control groups. .

Supplemental Figure 2



Supplemental Figure S2. The percentage of proliferating cells is not affected by butyrate treatment. NICCs were cultured in the presence of Edu (10 μ M). Proliferation was measured by Edu staining (green) and co-staining for insulin (red) and nuclei (blue). **(A)** Representative images are shown. **(B)** Percentage of Edu-positive cells in relation to the total cell count. Scale bars = 100 μ m.