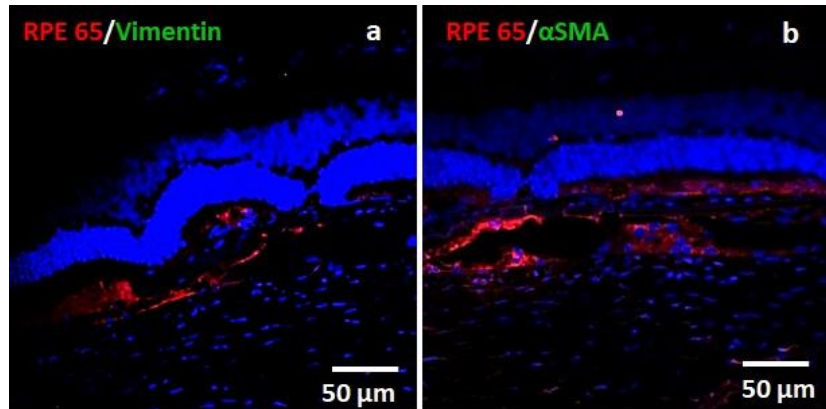


**Figure S1.** Representative images of immunodeficient RCS rat retinas implanted with the iPSC-RPE monolayer (shown by RPE65 expression) cultured on a parylene membrane assessed at 1-month post-implantation. Additional labelling of the retina sections was performed for expression of (a) CD68 (macrophages/microglia) and (b) GFAP (glial cells).



**Figure S2.** Representative images of immunodeficient RCS rat retinas implanted with iPSC-RPE monolayer (shown by RPE65 expression) cultured on a parylene membrane assessed at 1-month post-implantation. Additional labelling of the retina sections was performed for expression of classical mesenchymal markers (a) vimentin and (b)  $\alpha$  smooth muscle actin ( $\alpha$  SMA).