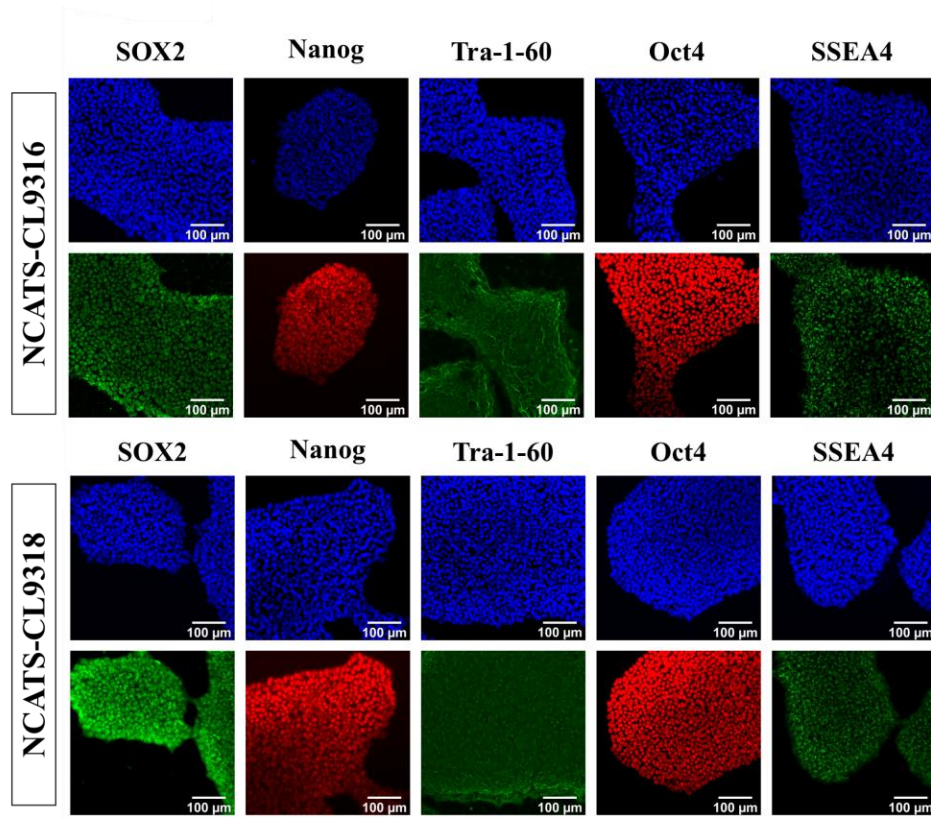


Fig. S1
(A)



(B)

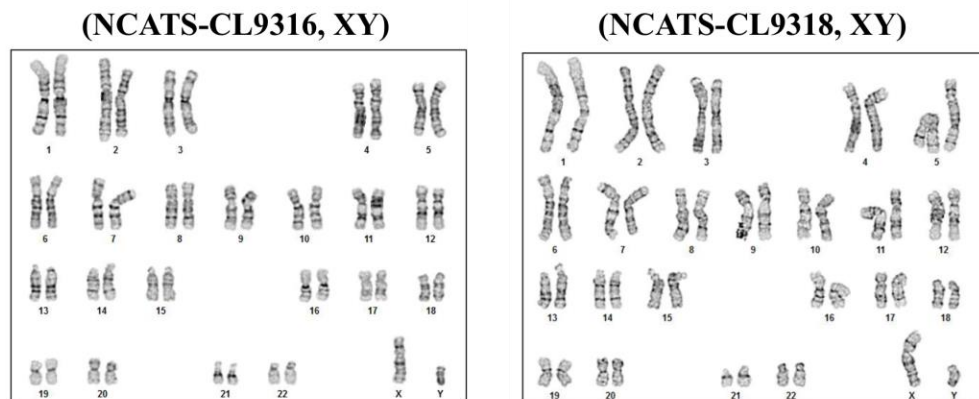


Fig. S1 Characterization of PD patient derived iPSCs. (A) Immunofluorescence images demonstrate the expression of pluripotent markers in iPSC lines NCATS-CL9316 and NCATS-CL9318. (B) Karyotype analysis for iPSC lines NCATS-CL9316 and NCATS-CL9318, indicating normal karyotypes.