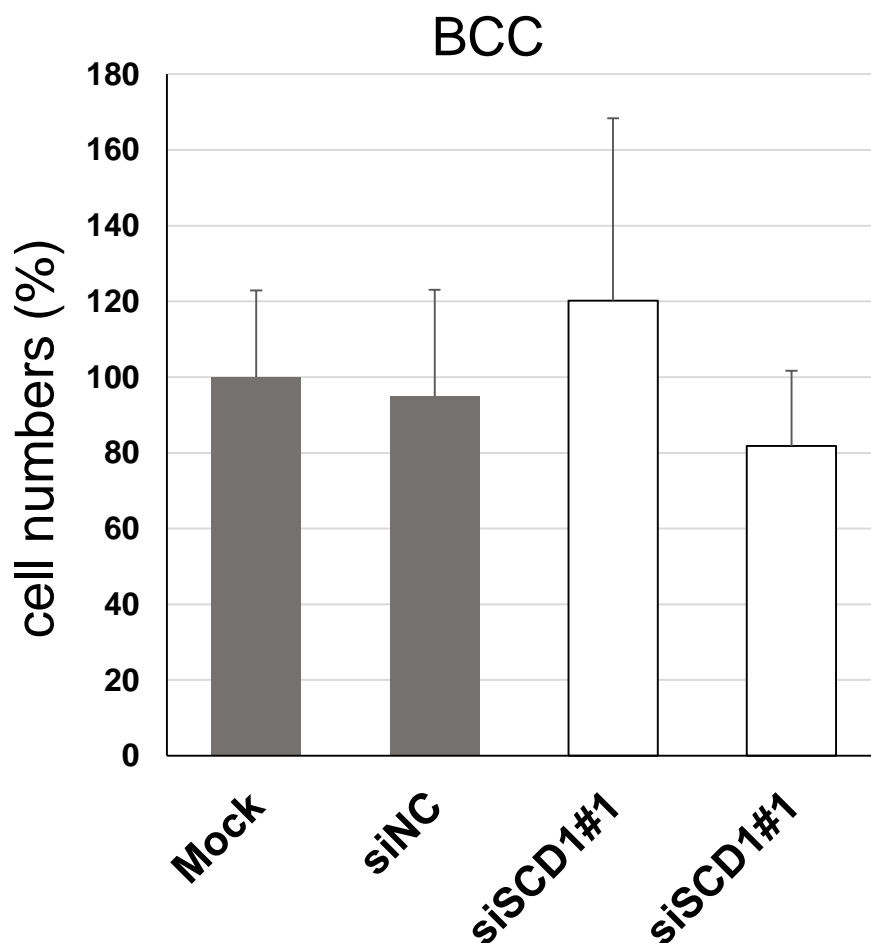
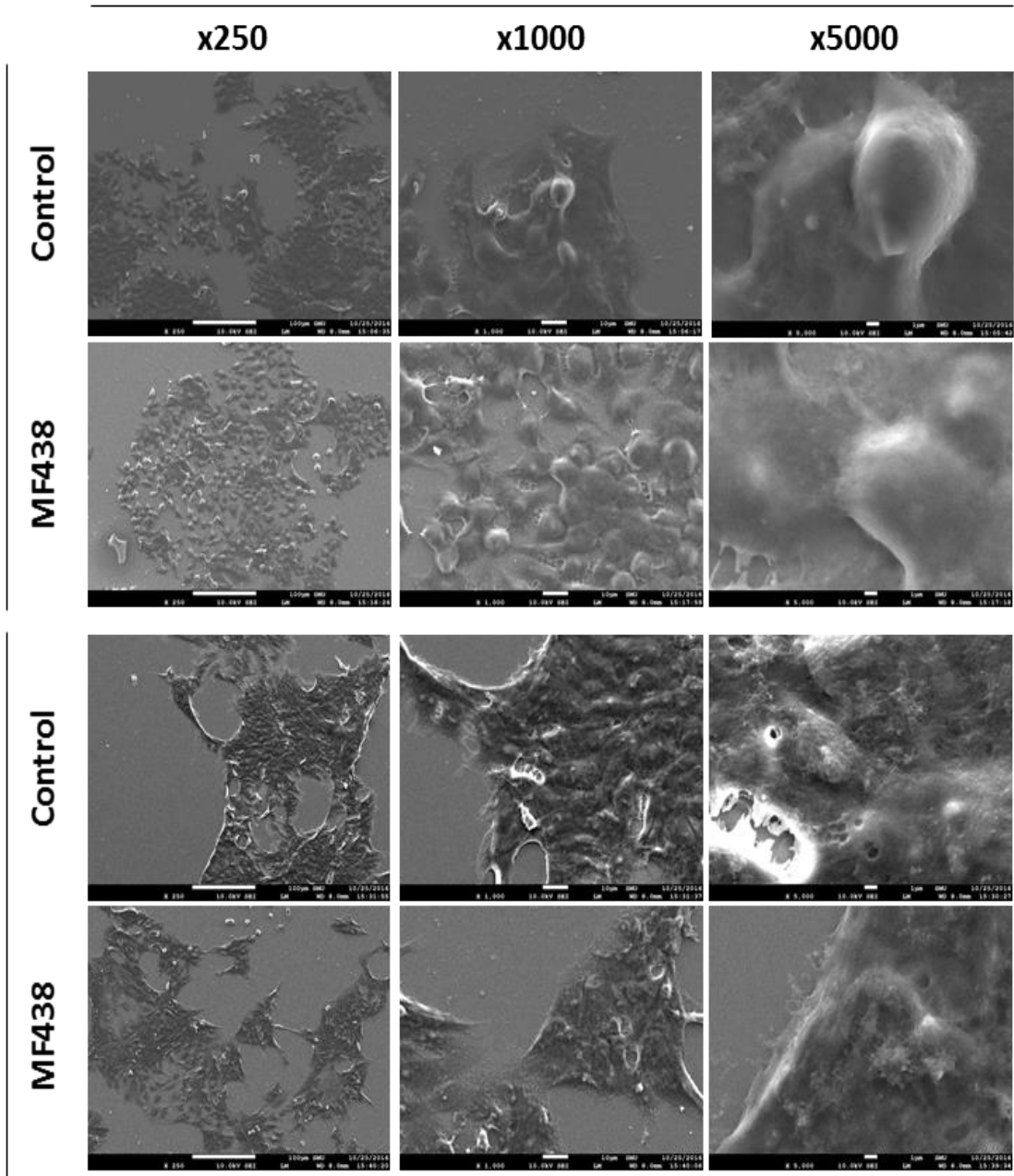


Supplementary Materials Figure S1. Decrease of SCD1 did not reduce cell number cultured in bulk condition. siRNA reverse-transfected HT29 BCC (Bulk cultured cells) are plated and counted after 3 days. Mock is without siRNA. siNC is scrambled siRNA for control and siSCD1#1 and siSCD1#2 are siRNAs against SCD1 but with different sequences. All from IDT.



Supplementary Materials Figure S2. SCD1 inhibition did not induce apoptosis in BCC (bulk cultured cells). Scanning electron microscope images demonstrate no apoptotic morphologies in BCC by MF-438 or DMSO (control).

BCC



Supplementary Materials Figure S3. Original image of the Western blots used.

