

**Figure S1.** Rainfall (mm), Relative Humidity (%) and Temperatures (°C) recorded during January–December 2023 in Calceta, Lodana and Quevedo., Ecuador. Source: INAMHI meteorological stations (<https://www.inamhi.gob.ec/>), Calceta (code: M1230), Lodana (code: M1208), and Quevedo (code: M006).



**Figure S2.** Corn plot showing the surrounding areas.





**Figure S3.** (A-F) Field observations and collection of insects associated with corn, (G-H) Laboratory observations and preservation of insects.



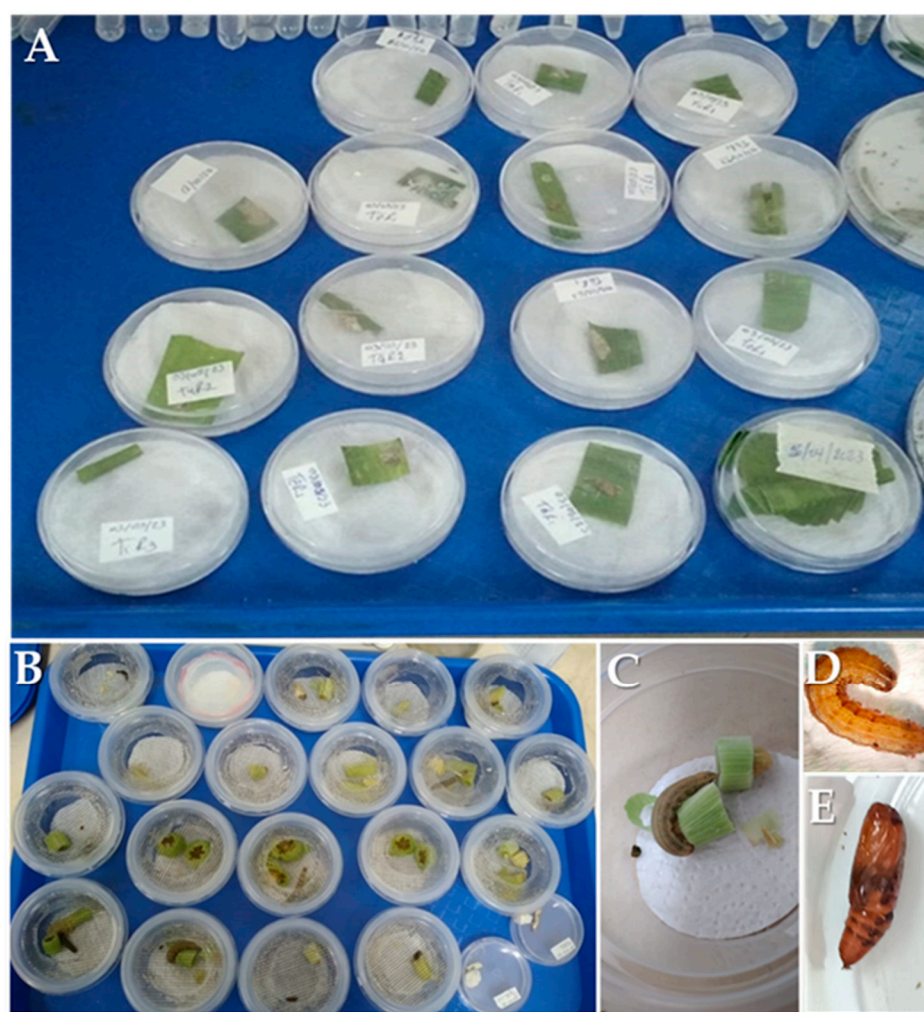
**Figure S4.** (A-C) Placement and (D-I) review of yellow traps.





**Figure S5.** Damage by *Spodoptera frugiperda*.





**Figure S6.** Daily laboratory observations on *Spodoptera frugiperda* (FAW) on corn leaves. (A) FAW egg masses in Petri dishes, (B) FAW larvae in plastic containers, (C-D) Detail of FAW larvae, (E) FAW pupa.



**Figure S7.** Evaluation of damage by earworm, *Heliothis zea*.