

Supplementary material - ANOVA breakdown, for all photosynthetic parameters.

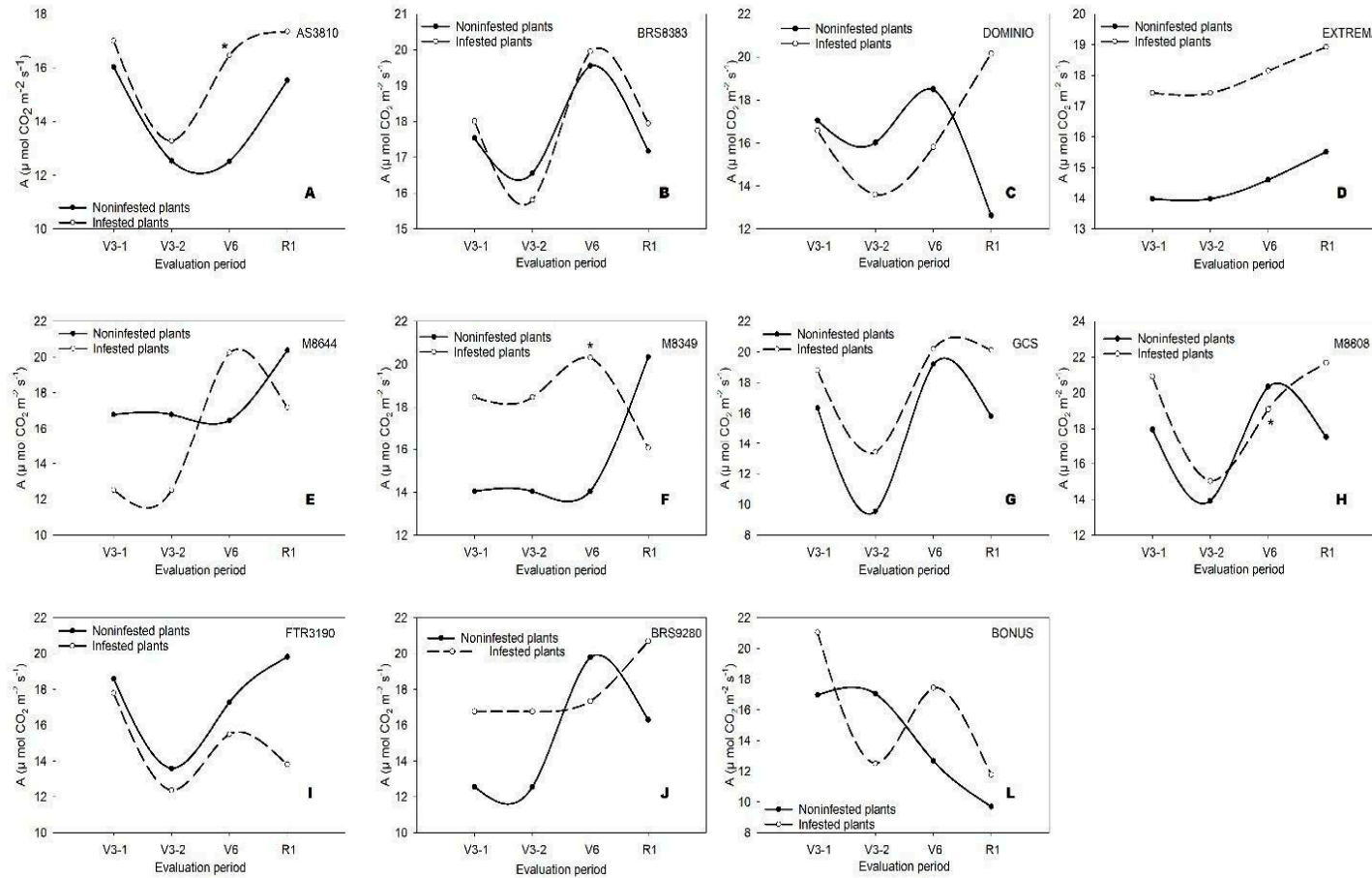


Figure S1 - The effects of herbivory by *Bemisia tabaci* on photosynthetic CO₂ assimilation (A) of soybean cultivars in noninfested and infested plants. *Asterisks indicate statistically significant differences; P ≤ 0.05.

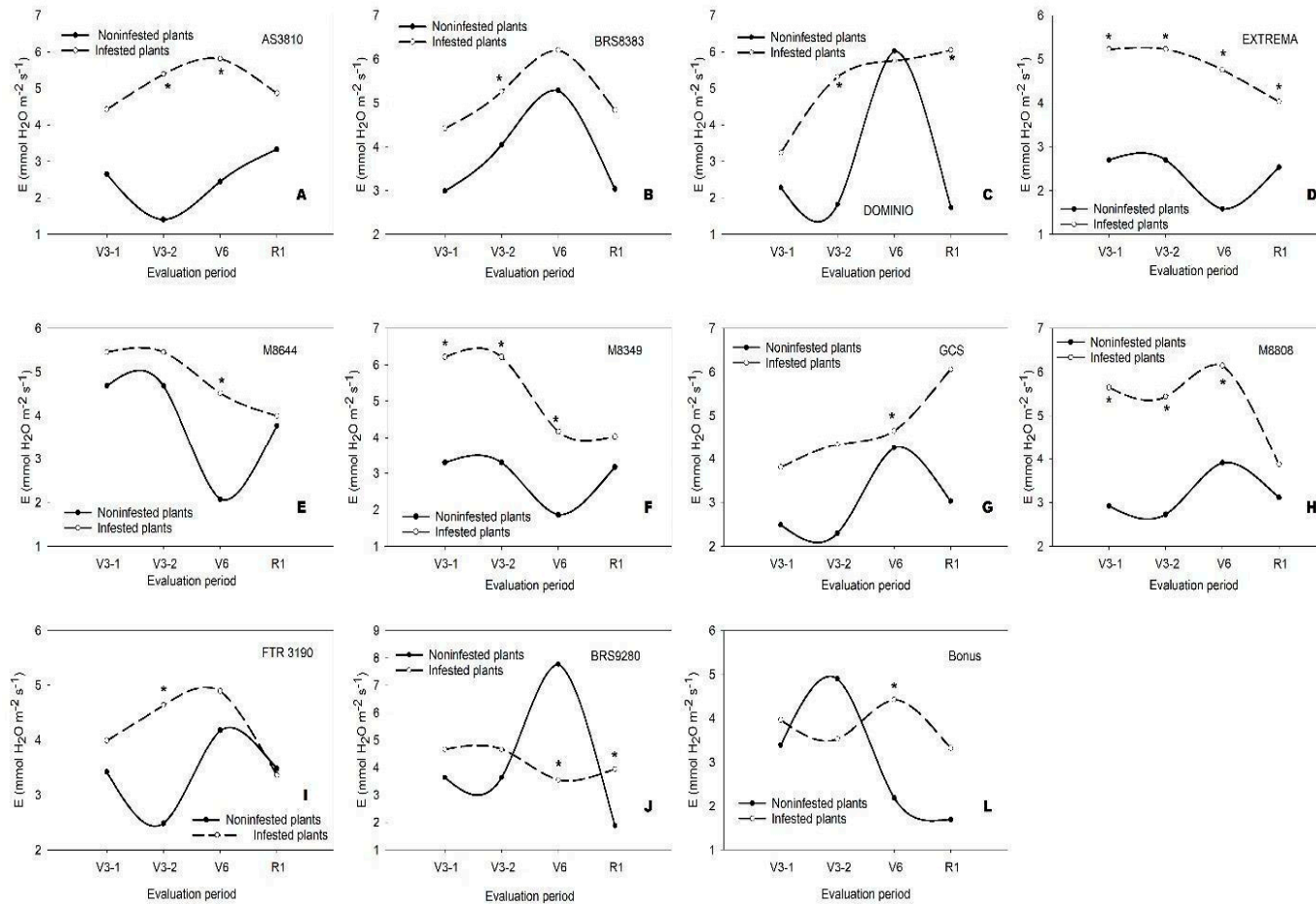


Figure S2 - The effects of herbivory by *Bemisia tabaci* on transpiration (E) of soybean cultivars in noninfested and infested plants. *Asterisks indicate statistically significant differences; $P \leq 0.05$.

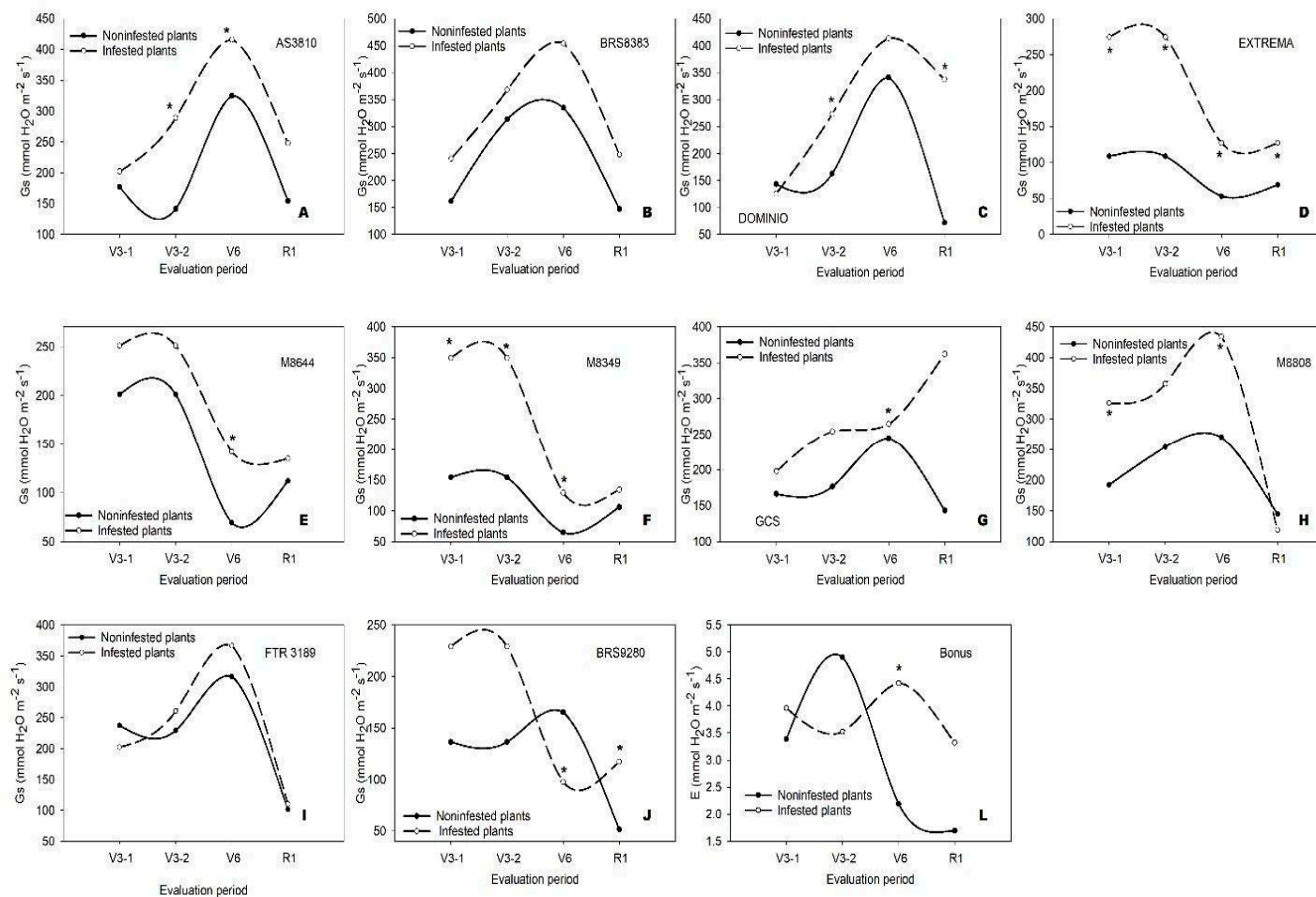


Figure S3 - The effects of herbivory by *Bemisia tabaci* on stomatal conductance to water vapour (G_s) of soybean cultivars in noninfested and infested plants. *Asterisks indicate statistically significant differences; $P \leq 0.05$.

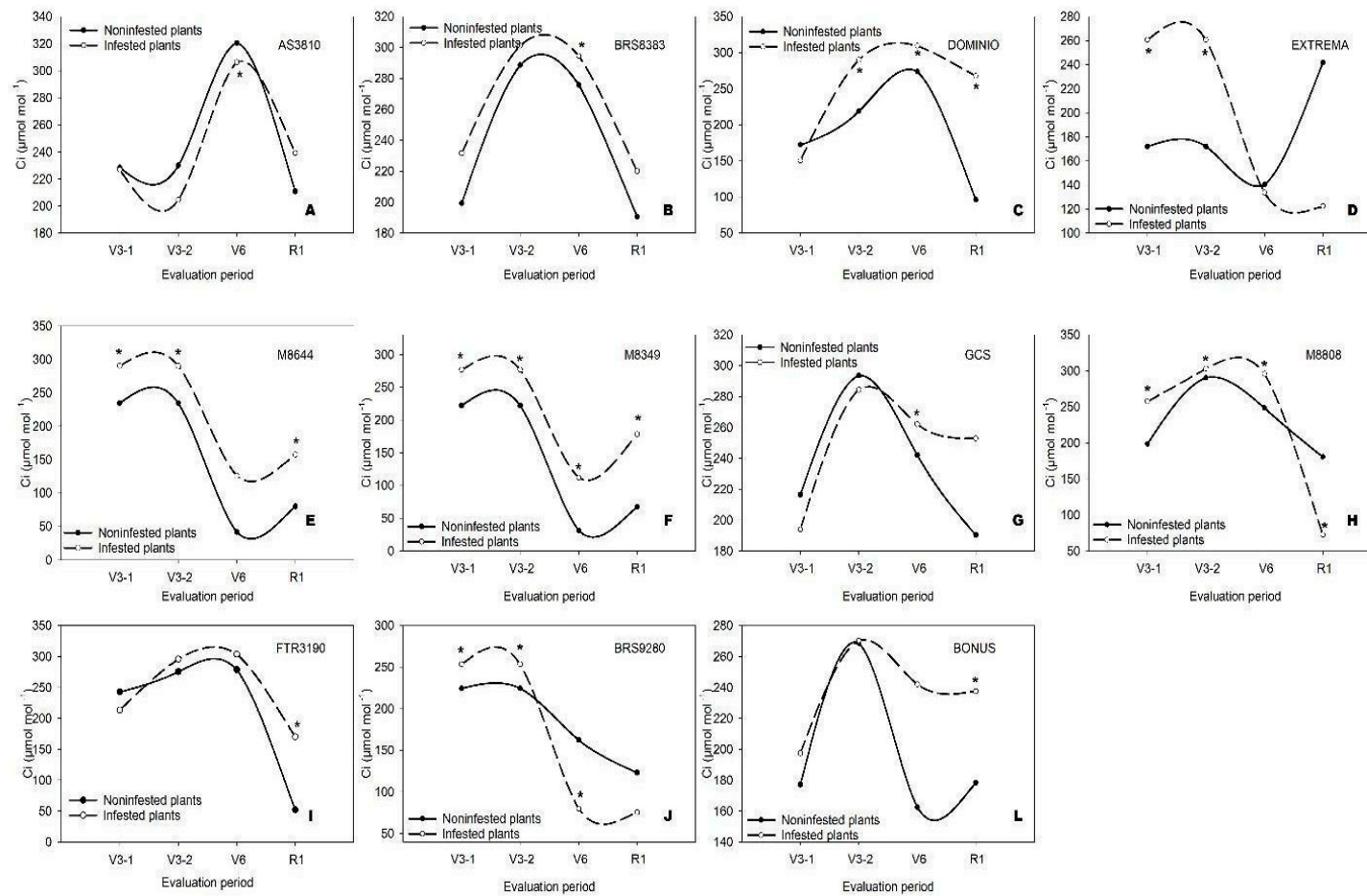


Figure S4 - The effects of herbivory by *Bemisia tabaci* on internal CO₂ concentration (Ci) of soybean cultivars in noninfested and infested plants. *Asterisks indicate statistically significant differences; P ≤ 0.05.

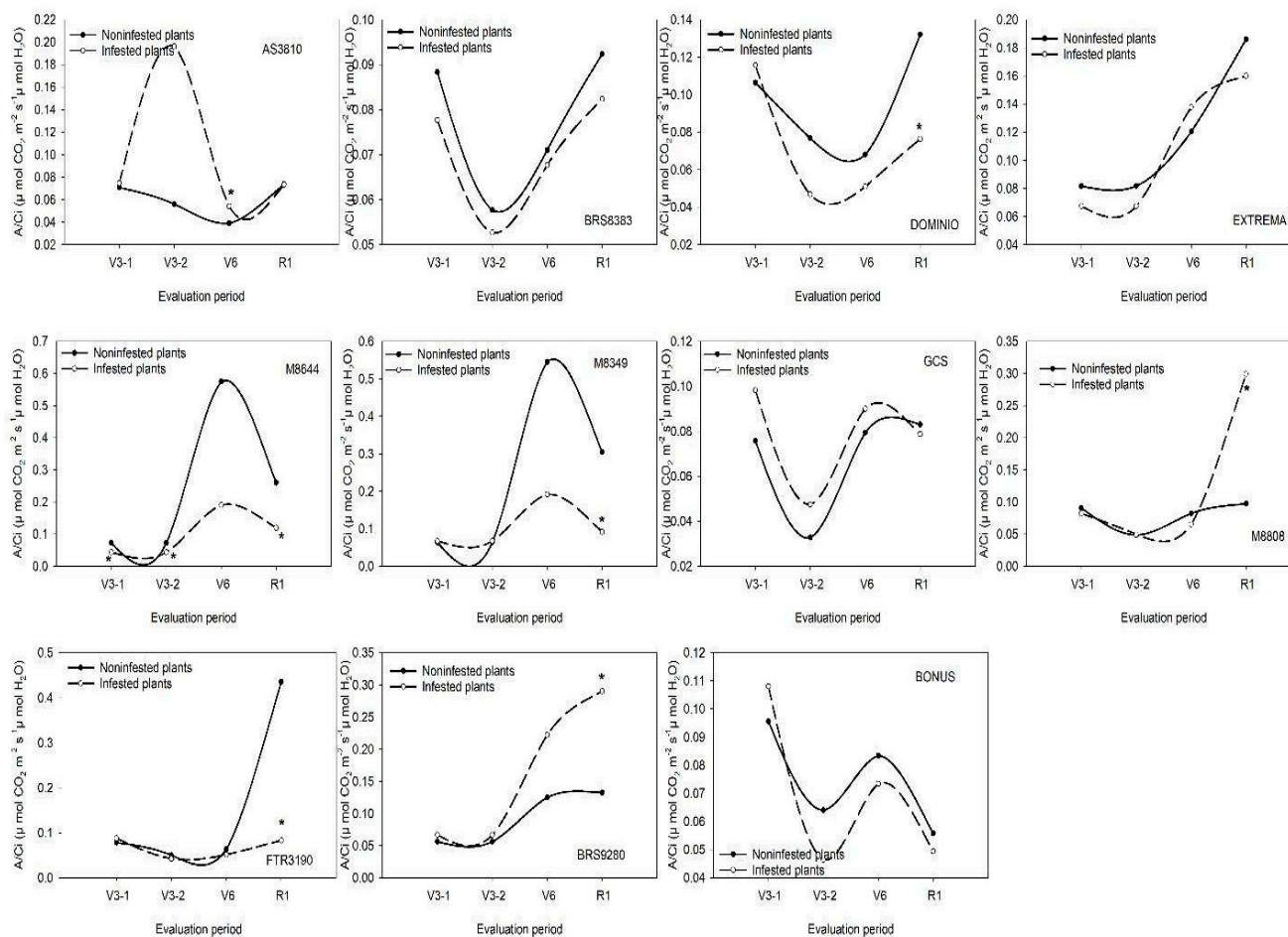


Figure S5 - The effects of herbivory by *Bemisia tabaci* on instantaneous carboxylation efficiency (A/C_i) of soybean cultivars in noninfested and infested plants. *Asterisks indicate statistically significant differences; $P \leq 0.05$.

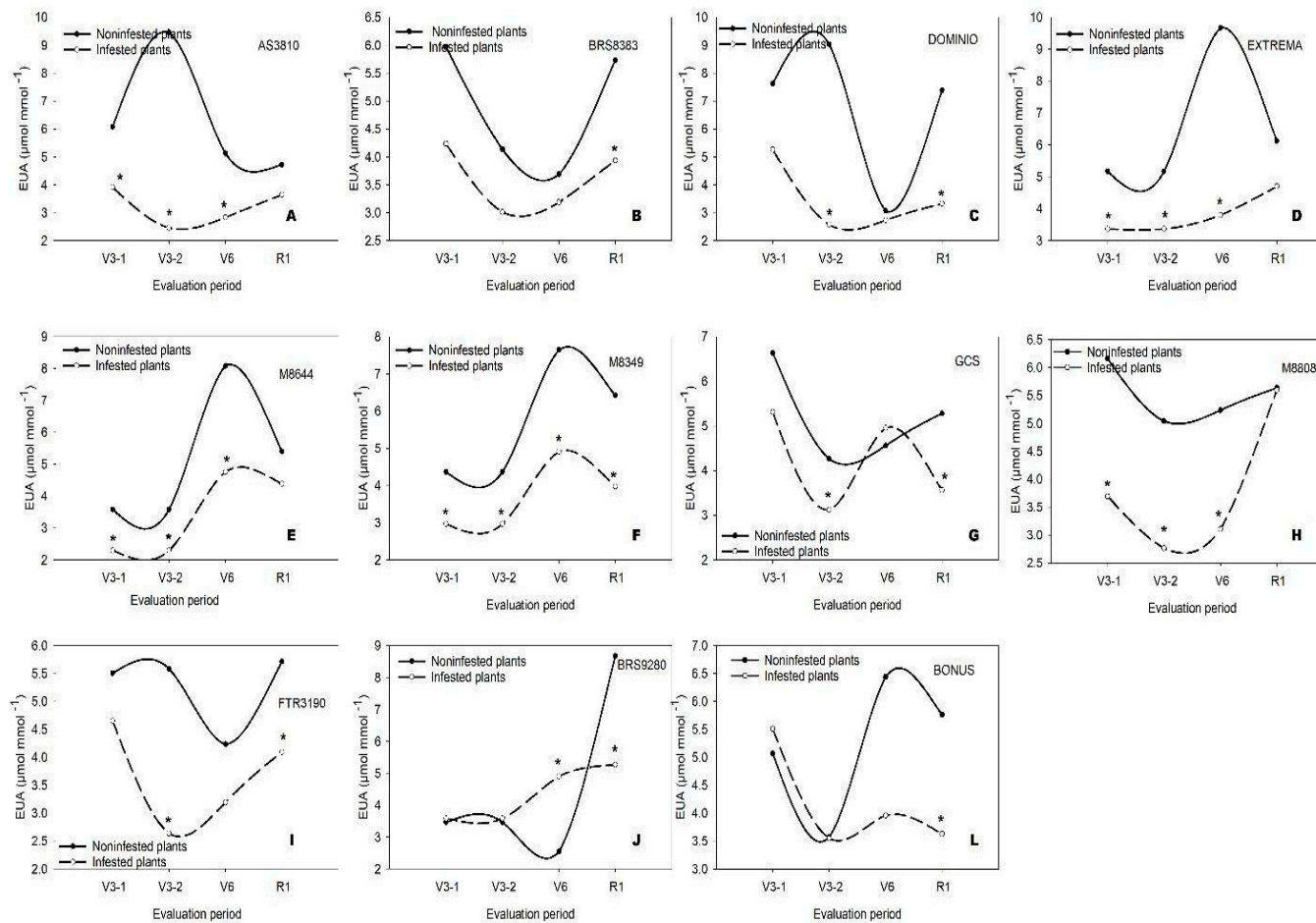


Figure S6 - The effects of herbivory by *Bemisia tabaci* on instantaneous water use efficiency (EUA) of soybean cultivars in noninfested and infested plants. *Asterisks indicate statistically significant differences; $P \leq 0.05$.

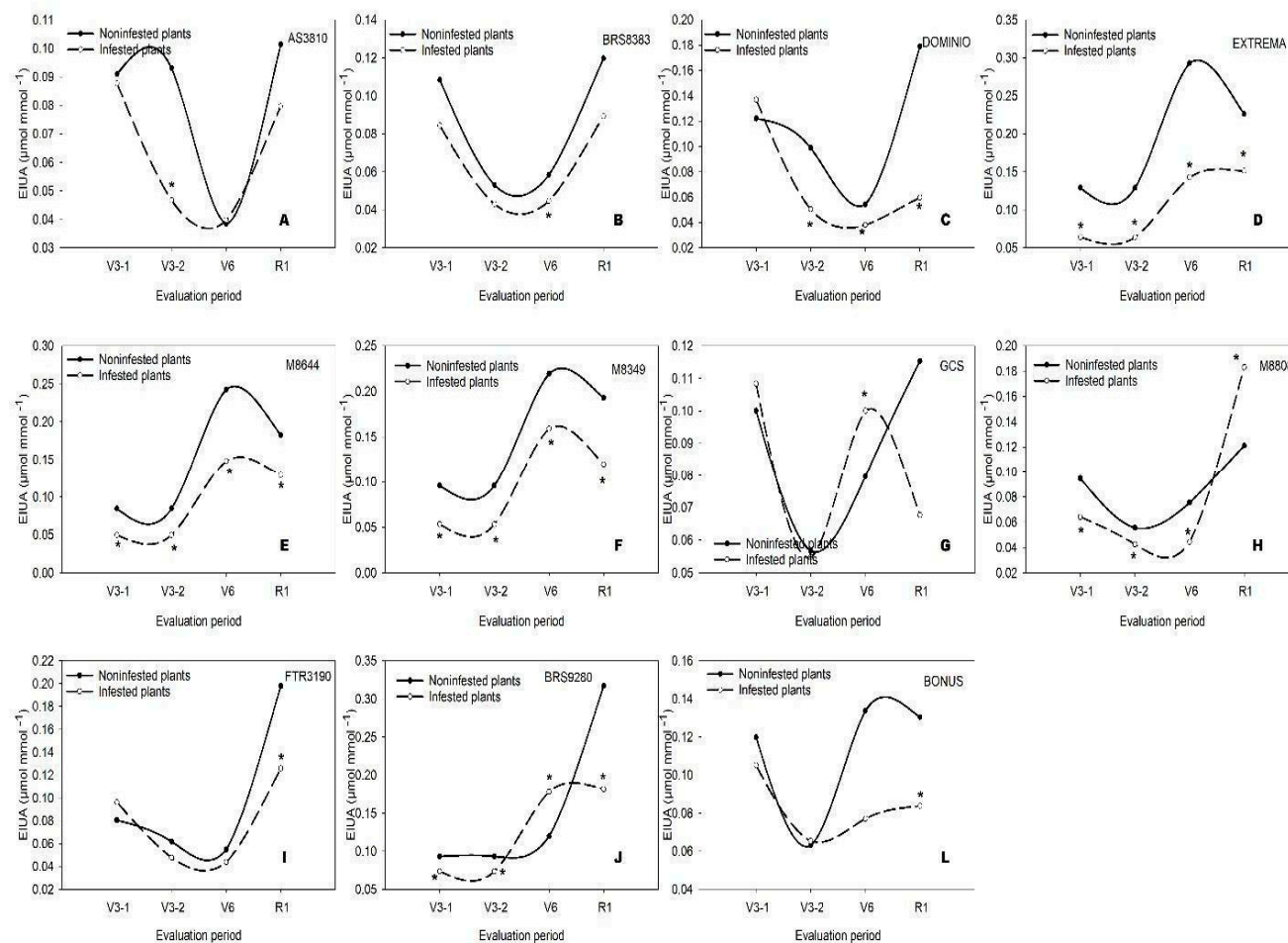


Figure S7 - The effects of herbivory by *Bemisia tabaci* on intrinsic water use efficiency (EIUA) of soybean cultivars in noninfested and infested plants. *Asterisks indicate statistically significant differences; $P \leq 0.05$.