



Figure S1. The expression of *PcNCX1* in the sample treated with CA by qRT-PCR. Error bars represent standard deviation. * $P < 0.05$, significant difference.

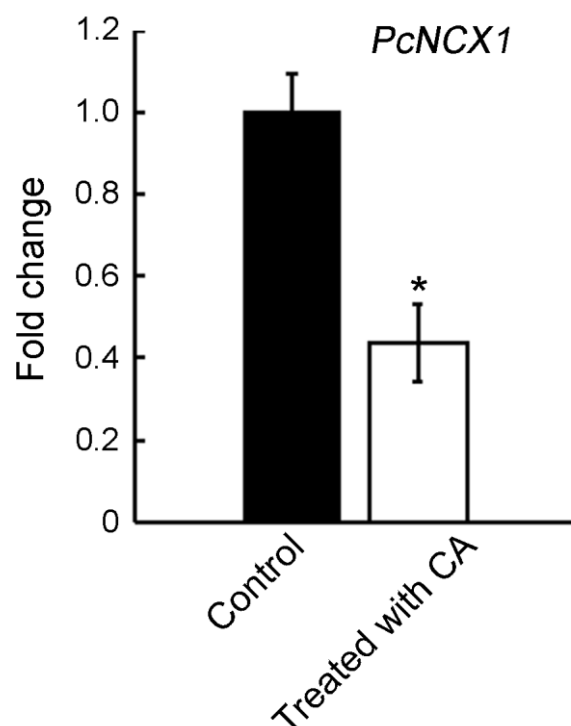


Table S1. The CDS sequence of *PcNCX1*.

>*PcNCX1* (131120)

```
ATGGCTCAGCGCCGACGCATCCGGAGGCTGACGCGGCAGGCACTGGGCACTGCGTTGGTCATCACTGGCTGCGCGACAGG
CTTTGTGGCTATGACTTACCGCGTGCTGTCCGATCCAGCACCAGCCGCTCGTGTACTGGCCGAAGCGTCTTCCTCCTCCGAC
GCAGACACGTGCGGTAAATTAGATTCTTGGGAGACAAGTGGTGGCATTCTGTGCTGTACGTCATGGCGCTGGGCTACATCTTC
GTGTCGCTCGCCATAATCTGCGATGACTACTTCGTGTGCGGCACTGGAGAAAATCTCCGACGCTCTAAATCTGTACCCGAC
GTTGCTGGAGCCACGTTTCATGGCCGCCGGGTCATCAGCCCCGAACCTTTTCGTGCTCTGGCCGACAATGTTTTCAAGAAG
CCCGCAGAGAGTCTGGGCGTTGGTACAATCGTGGGCTCGGCCATATTCAACATTCTCATCATTATCTCACTGTGCGGGGCTTC
TGTCGGGACAAGTGCTCAAGCTCGACTGGCGTCCGCTGTTGCGCGACTCGCTCTGGTATACGTGGGCTATTGTGGTACTAG
CCTTCGCTGTGTGGGATGGCAGCATTGACGTGGTGGACTCGACCATGATGGTCAGTTTCGTACGCGAGCTATATCGCTTACA
TGGGGTTCAATGAGCGGGTGGTAAACTGTTGTTGCAAGCGACCGGAGGCCATCGAAGTCCCGAAAAGGAAAAGGACAA
GCTGATGTCAATATCCAAGTCGGACGGCACTTCCTCTGCGGAGATAGTAGTCACTACCACTGGCGACGTCCAAAACCTCGTT
GGTAGAAGAGGGGCATTACCCAACCAAAACGGATTTCTCGCCGAACAGGACAAATTGAACCCGATTCTTCGGTCCAAGT
ATCGCATGTTCCAAGCGCACCAGTTACTTGAGCGAACAATTCATCAGGCGAACTCGATGTAGAAGCTCCAGAACAAACAT
GTTGTGAAGCCAAGTCCGAAACAGCAATTGAACGAAGTACCGGACGAAGAACCACTGCCGAAATATTTTGACGATGTCAT
CGTCCGCCACAAGGCATTTTGGCAAAAATGTGGTTTGTATTACGTGGCCTATTGTGGCCTTGGCCCGCATCACTATTCCC
GACTGCCGTTACCCAGCGTTTCTGGACCTATAGGGTACTCTGCGACGTTTTTGATCTCCATCGCTTGGATCGGTGTGCTTTC
GCACTACACTGTTGCTTTTGGAAACCAAGTTTGATGCATTGCCGGCATAACCATCTGCGCTCATGGGGCTGACAATCATTGC
GGCAGGCACGTCAATTCCAGATGCGCTGAGCTCTATTCTCGTAGCCCGCGATGGCCATGGAGATATGGCGGTTTCTAACGC
ACTCGGAAGCAATGTGTTTCGACATTCTTTTGGACTGGGGCTTCCTTTTCTTGTCAAACCTGGTCTACAACGAAACTGTA
CCTGTAGCAGGAAACGATCTCGACGTGTGATCGCGATCTTGTTCGCTGTACTGCTATTGCTGTGCGGGTGCTGATTTTCAT
CACGCTGGAGACTCTATCCATCCGCCTGTGGATTCTGTTGATGCTCTACGTGCTATATATTGTTTTCTCATATCTTCGCGGC
TTGGACATCATTTAA
```

Table S2. Summary of DEGs encoding ABC transporter genes.

Gene ID	log2 Ratio (CA_treatment/Control)	Up/Down-Regulation (CA_treatment/Control)	P-value	Gene annotation
525156	5.600983311	Up	0	ABC transporter G family member 31
13039	5.511844572	Up	0	ABC transporter G family member 36
537832	5.396476495	Up	0	ABC transporter G family member 31
98810	5.091596641	Up	3.59E-29	ABC transporter G family member 40
7576	4.875890369	Up	0	ABC transporter G family member 36
571243	4.738528259	Up	0	ABC transporter G family member 36
525295	3.543131594	Up	0	ABC transporter G family member 31
129233	3.327361981	Up	7.76E-34	ABC transporter G family member 36
110336	1.81344868	Up	6.20E-30	ABC transporter G family member 36
110336	1.81344868	Up	6.20E-30	ABC transporter G family member 36
539268	1.732816122	Up	2.81E-73	ABC transporter G family member 36
535813	-2.928544389	Down	0	ABC transporter A family member 1
6938	-2.91153696	Down	1.69E-49	ABC transporter B family member 11
534240	-2.654911378	Down	1.54E-29	ABC transporter C family member 3
120597	-2.507164229	Down	1.24E-12	ABC transporter A family member 1
533200	-2.36705747	Down	1.50E-138	ABC transporter A family member 1
22031	-2.304854582	Down	2.36E-22	ABC transporter B family member 2
7657	-2.26589406	Down	1.90E-05	ABC transporter G family member 48
537834	-2.221053493	Down	3.12E-07	ABC transporter G family member 34
537849	-2.186075628	Down	0	ABC transporter G family member 1
577748	-2.177622436	Down	0	ABC transporter G family member 11
511522	-2.10205815	Down	1.75E-273	ABC transporter G family member 11
553481	-2.082904559	Down	1.10E-54	ABC transporter G family member 13
21268	-2.062639324	Down	0	ABC transporter G family member 11
534200	-2.057110637	Down	1.99E-65	ABC transporter G family member 29
535815	-2.033455297	Down	4.94E-73	ABC transporter A family member 1
536708	-1.940724191	Down	1.38E-12	ABC transporter G family member 35
530618	-1.934692561	Down	1.39E-82	ABC transporter C family member 8
6355	-1.915935735	Down	4.94E-08	ABC transporter G family member 29
103770	-1.883806982	Down	5.59E-06	ABC transporter G family member 44
20829	-1.651665926	Down	1.26E-11	ABC transporter G family member 34
7637	-1.618909833	Down	3.36E-06	ABC transporter A family member 1
537833	-1.606657572	Down	3.23E-14	Pleiotropic drug resistance protein TUR2
504139	-1.533295265	Down	0	ABC transporter G family member 29
574276	-1.481168993	Down	2.17E-27	Pleiotropic drug resistance protein TUR2
20570	-1.452512205	Down	4.76E-11	ABC transporter G family member 38
526098	-1.444486808	Down	8.83E-26	ABC transporter B family member 2
541621	-1.34129342	Down	1.18E-08	ABC transporter B family member 2
571405	-1.324924347	Down	4.40E-55	ABC transporter A family member 1
561581	-1.272544625	Down	8.24E-32	ABC transporter B family member 2
7713	-1.216932361	Down	3.54E-15	ABC transporter C family member 3
543332	-1.128405732	Down	1.11E-06	Multidrug resistance-associated protein 1
564101	-1.073486465	Down	5.14E-13	ABC transporter C family member 5
105401	-1.037281016	Down	2.03E-06	ABC transporter G family member 43

504784	-1.018548662	Down	4.19E-08	ABC transporter G family member 2
--------	--------------	------	----------	-----------------------------------

Table S3. Summary of DEGs encoding glucan 1,3-beta-glucosidase genes.

geneID	log2 Ratio (CA_treatment/ Control)	Up/Down-R egulation (CA_treatme nt/Control)	P-value	Gene annotation
5360	1.802911977	Up	7.57E-75	Glucan 1,3-beta-glucosidase
509157	1.560315494	Up	1.25E-46	Glucan 1,3-beta-glucosidase
131827	1.509364882	Up	0.000117533	Glucan 1,3-beta-glucosidase
549616	1.32579704	Up	3.06E-47	Glucan 1,3-beta-glucosidase
507901	1.07685424	Up	2.33E-154	Glucan 1,3-beta-glucosidase
9315	-3.57718515	Down	6.63E-06	Glucan 1,3-beta-glucosidase
550275	-2.882556642	Down	1.25E-31	Glucan 1,3-beta-glucosidase
511225	-2.010197951	Down	1.25E-39	Glucan 1,3-beta-glucosidase
47033	-1.564889898	Down	0.000406094	Glucan 1,3-beta-glucosidase
15440	-1.552047878	Down	0.00016942	Glucan 1,3-beta-glucosidase
18960	-1.274552557	Down	1.36E-06	Glucan 1,3-beta-glucosidase
550254	-1.033894061	Down	1.87E-68	Glucan 1,3-beta-glucosidase
