

## Supplementary material

### ***Glycyrrhiza uralensis* Nodules: Histological and Ultrastructural Organization and Tubulin Cytoskeleton Dynamics**

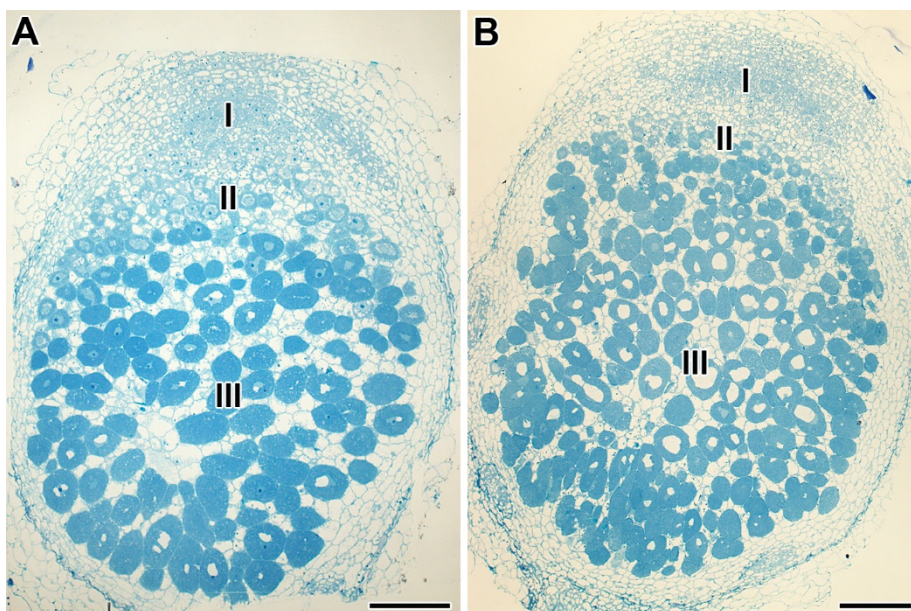
**Anna V. Tsyganova<sup>1</sup>, Anna B. Kitaeva<sup>1</sup>, Artemii P. Gorshkov<sup>1</sup>, Pyotr G. Kusakin<sup>1</sup>,  
Alexandra R. Sadovskaya<sup>2</sup>, Yaroslav G. Borisov<sup>2</sup> and Viktor E. Tsyganov<sup>1,3,\*</sup>**

<sup>1</sup> All-Russia Research Institute for Agricultural Microbiology, Laboratory of Molecular and Cellular Biology, 196608 Saint Petersburg, Russia; avtsyganova@arriam.ru (A.V.T.); anykitaeva@gmail.com (A.B.K.); artemius1993@yandex.ru (A.P.G.); kussakin@gmail.com (P.G.K.);

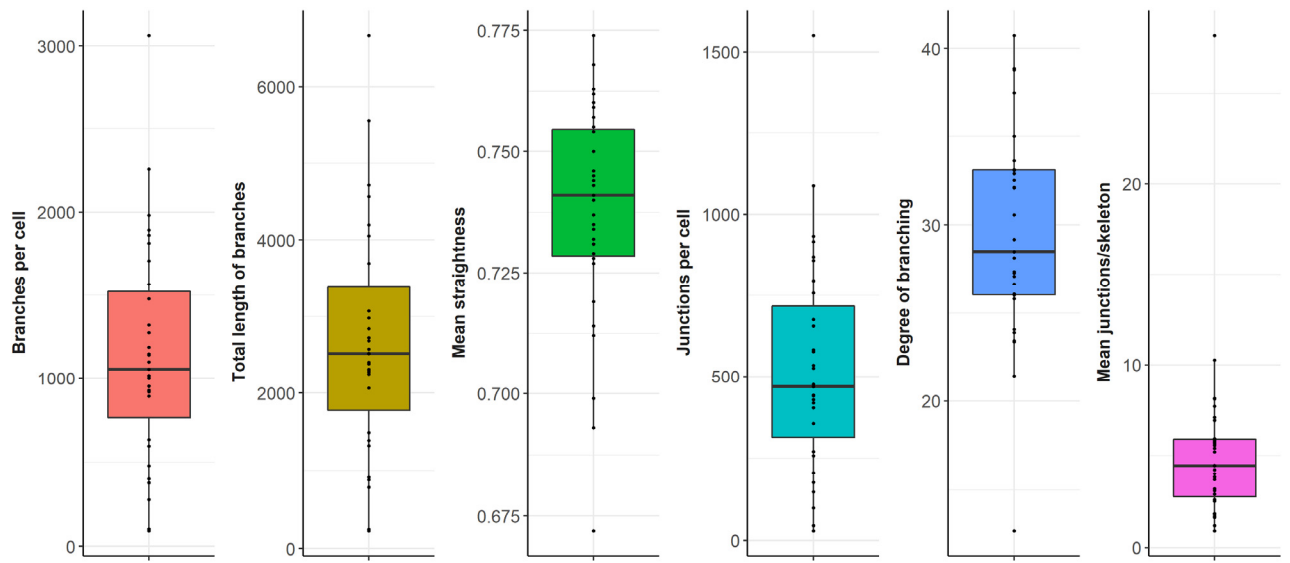
<sup>2</sup> Faculty of Biology, Saint Petersburg State University, 199034 Saint Petersburg, Russia; alexandrasad@mail.ru (A.R.S.); gis.ib88@gmail.com (Y.G.B.)

<sup>3</sup> Saint Petersburg Scientific Center RAS, 199034 Saint Petersburg, Russia

\* Correspondence: vetsyganov@arriam.ru; Tel.: +7-812-4705100



**Figure S1.** Histological organization of *Glycyrrhiza uralensis* Fisch. ex DC. nodules infected with *Mesorhizobium* sp. strains RCAM3115 (A) and RCAM3120 (B). I – meristem, II – zone of infection, III – zone of nitrogen fixation. Bar = 200 μm.



**Figure S2.** Quantitative analysis of endoplasmic microtubules in nitrogen-fixing cells of *G. uralensis*.