

Figure S1. Mean monthly precipitation for Mid Pilmore from 2003 to 2014. Red and black arrows indicate notable high or low rainfall month-years respectively.

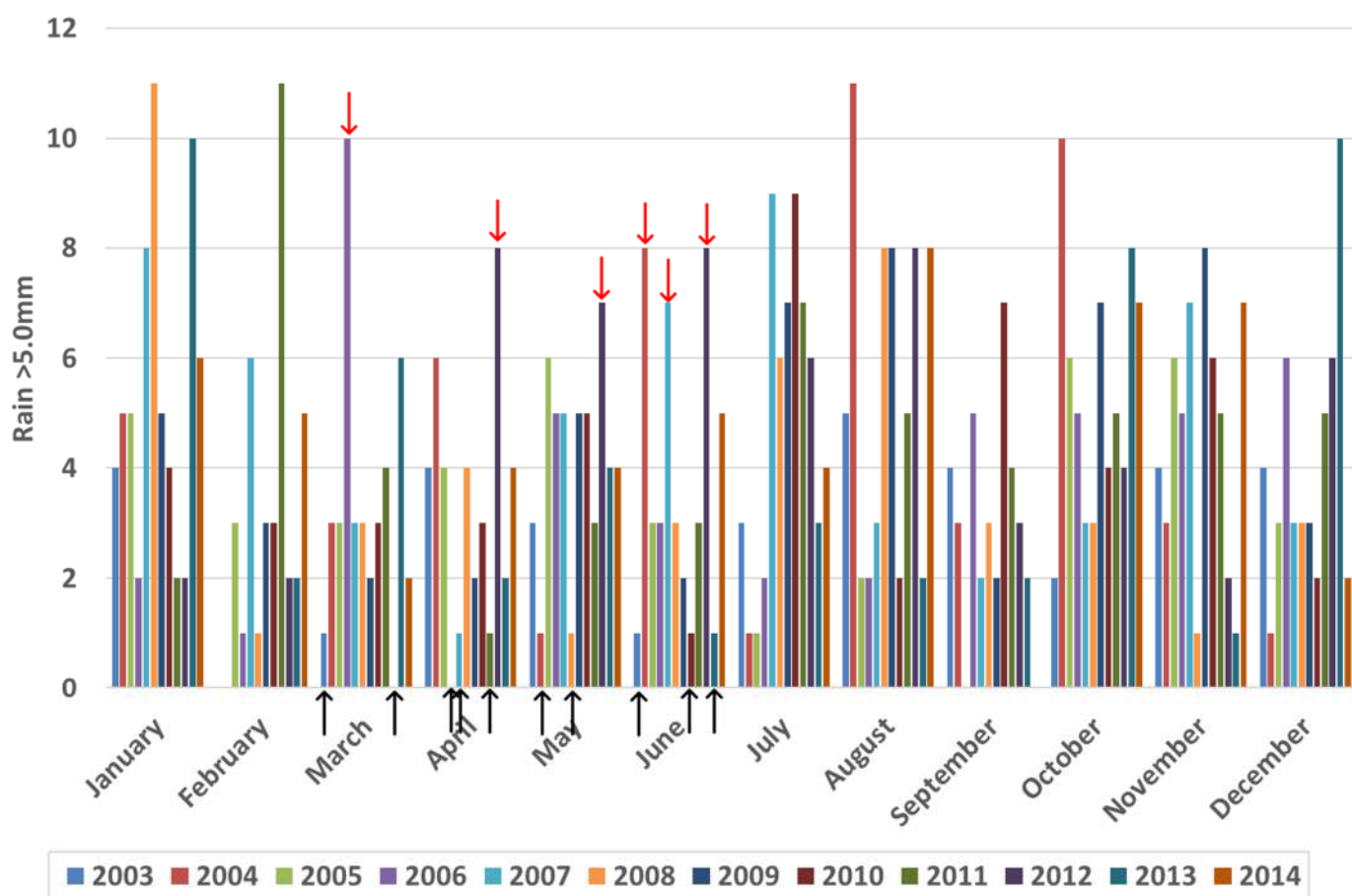


Figure S2. Mean monthly days with rain >5.0mm for Mid Pilmore from 2003 to 2014. Red and black arrows indicate notable high or low rain >5.0mm days month-years respectively.

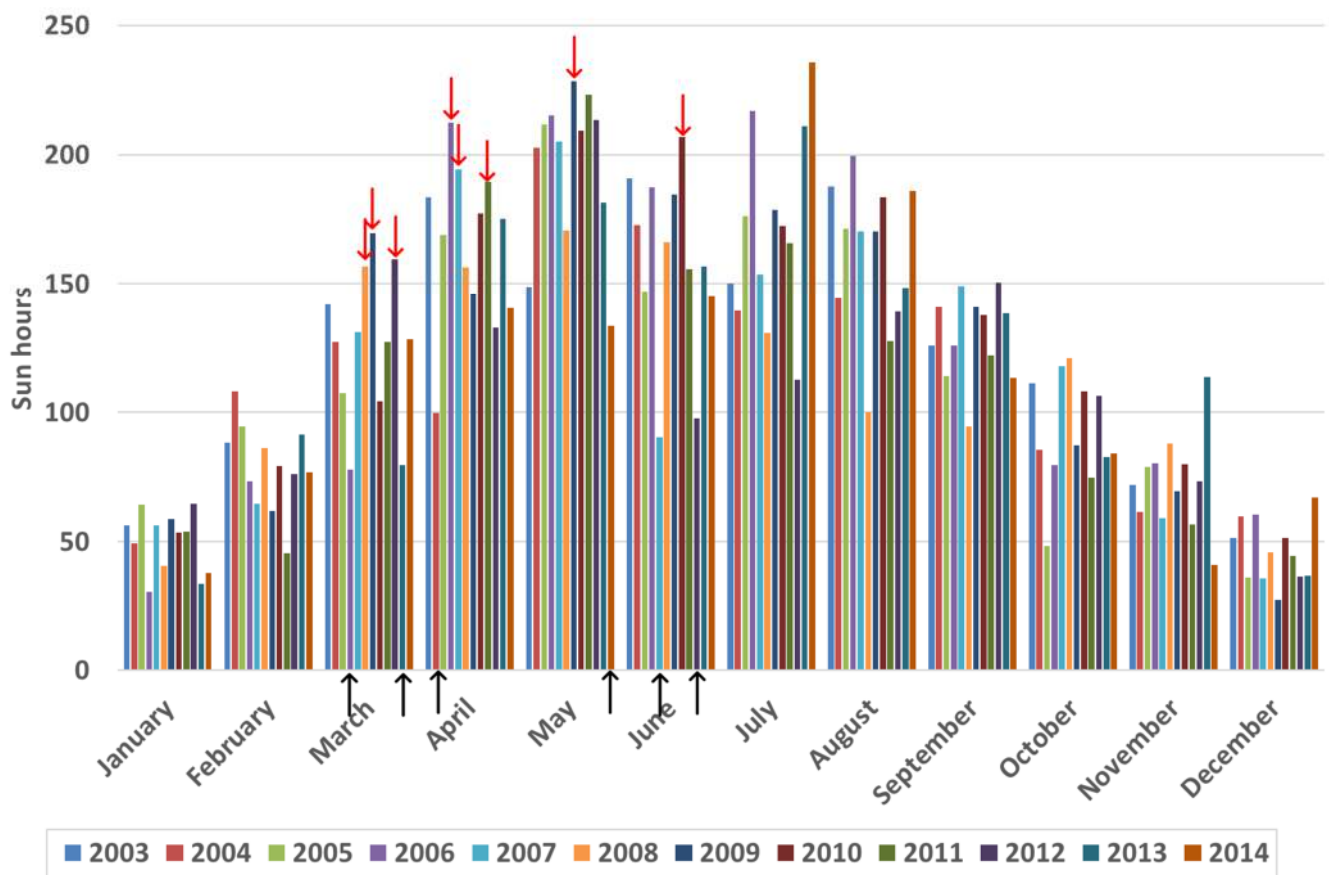


Figure S3. Mean monthly sunshine hours for Mid Pilmore from 2003 to 2014. Red and black arrows indicate notable high or low sunshine hour month-years respectively.

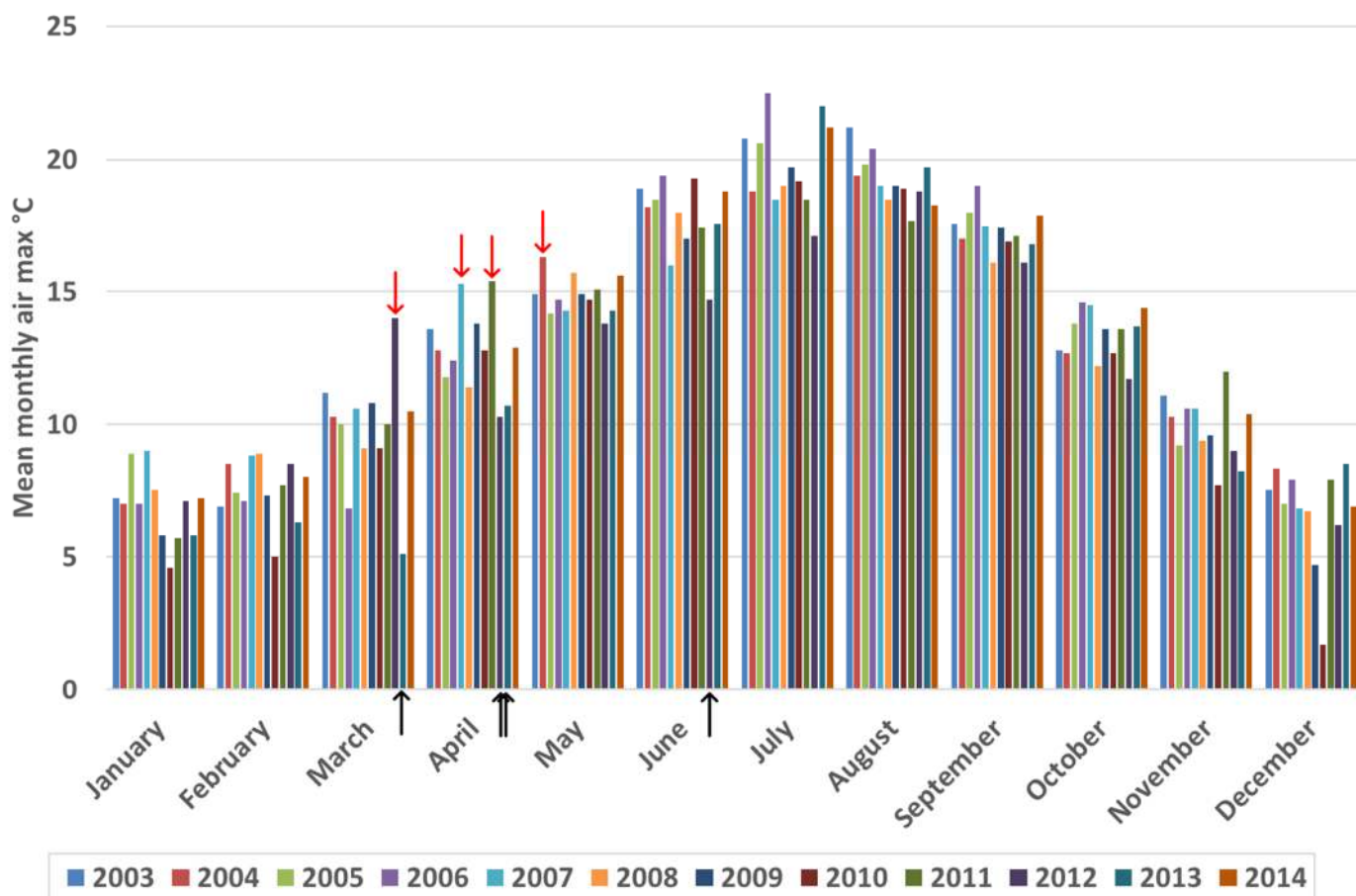


Figure S4. Mean monthly air temperature maximum for Mid Pilmore from 2003 to 2014. Red and black arrows indicate notable high or low maximum value month-years respectively.