

Supplementary Materials: Surface Immobilization of pH-Responsive Polymer Brushes on Mesoporous Silica Nanoparticles by Enzyme Mimetic Catalytic ATRP for Controlled Cargo Release

Hang Zhou, Xin Wang, Jun Tang and Ying-Wei Yang

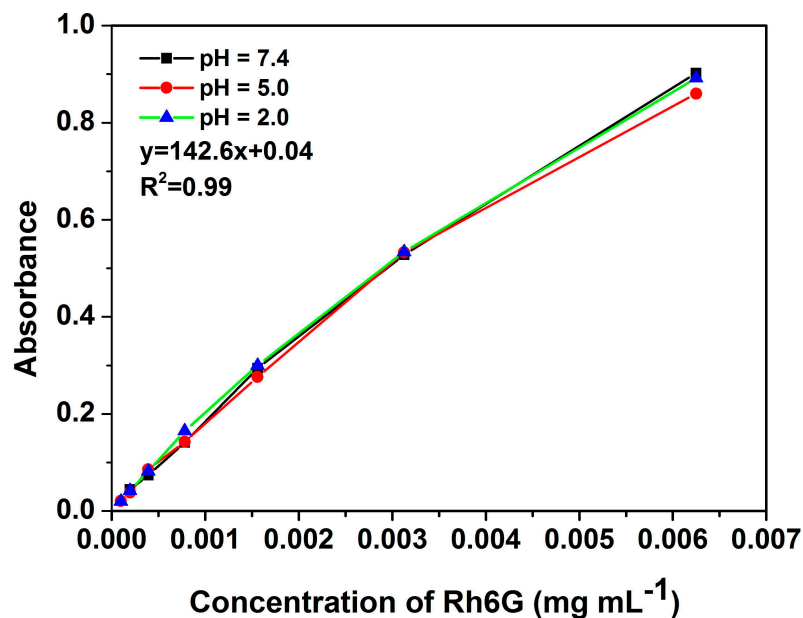


Figure S1. Calibration curves for rhodamine 6G in different PBS buffers.

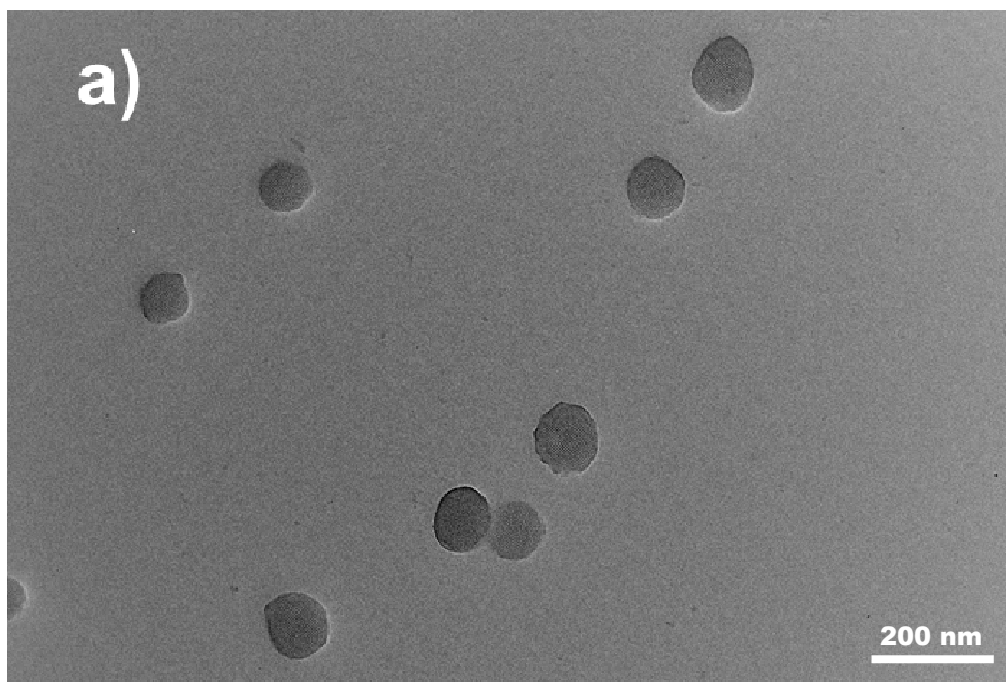


Figure S2. Cont.

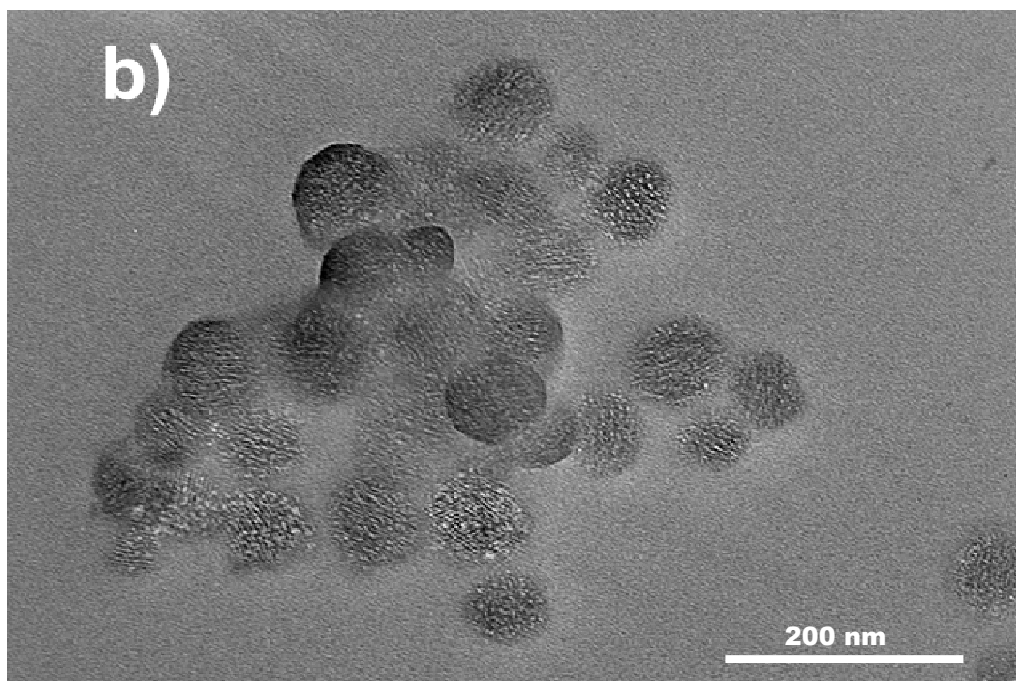


Figure S2. TEM images of (a) MSN-OH and (b) MSN-PDMAEMA.

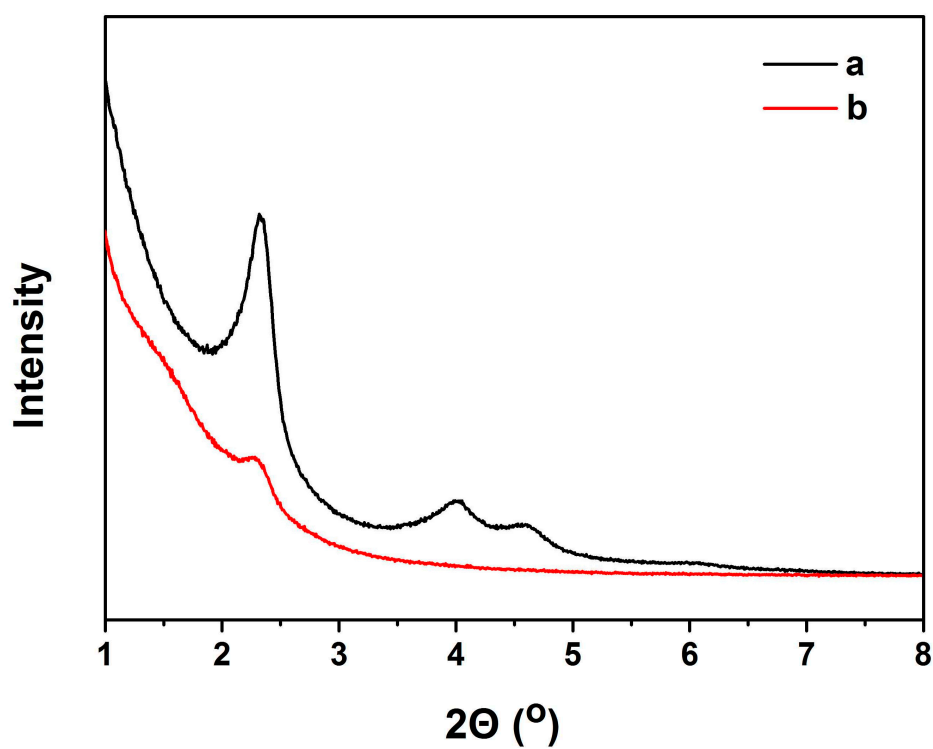


Figure S3. The small-angle powder XRD of (a) MSN-OH and (b) MSN-PDMAEMA.

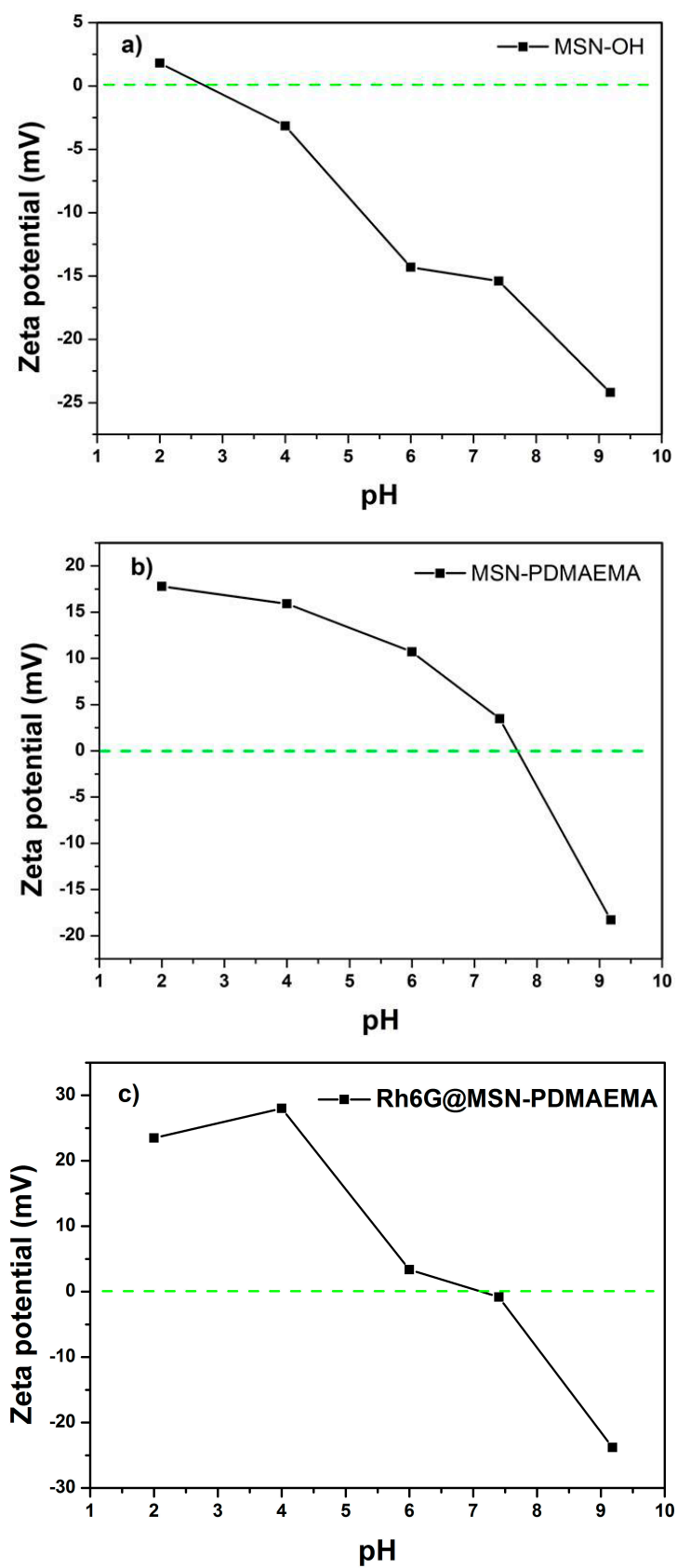
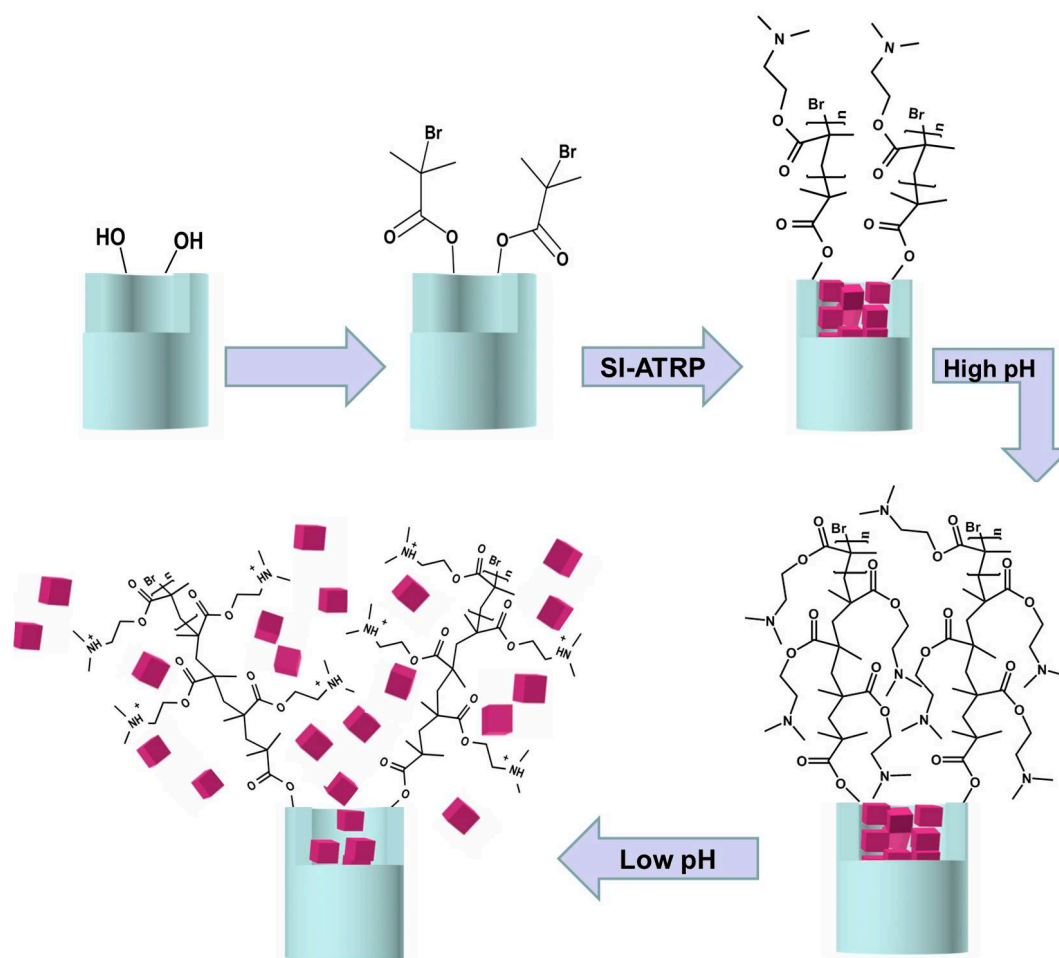


Figure S4. pH-Dependency of the apparent Zeta-potential values of MSNs in different PBS buffers: (a) MSN-OH; (b) MSN-PDMAEMA; and (c) Rh6G@MSN-PDMAEMA.



Scheme S1. Schematic representation of the preparation of Rh6G@MSN-PDMAEMA via SI-ATRP and the operation of the switching of polymer brushes on MSNs by pH changes.



© 2016 by the authors; licensee MDPI, Basel, Switzerland. This article is an open access article distributed under the terms and conditions of the Creative Commons Attribution (CC-BY) license (<http://creativecommons.org/licenses/by/4.0/>).