

Construction and Performance Evaluation of *Nicandra physalodes* (Linn.) Gaertn. Polysaccharide-Based Nanogel

Fangyan Liu [†], Chen Shen [†], Xuelian Chen, Fei Gao and Yin Chen ^{*}

College of Food and Pharmacy, Zhejiang Ocean University, Zhoushan 316000, China;
fangyanliuliu@outlook.com (F.L.); fei18957239291@outlook.com (C.S.);
zhang17364621814@outlook.com (X.C.); gaofei565513128@outlook.com (F.G.)

^{*} Correspondence: chenying@zjou.edu.cn

[†] These authors contributed equally to this work.

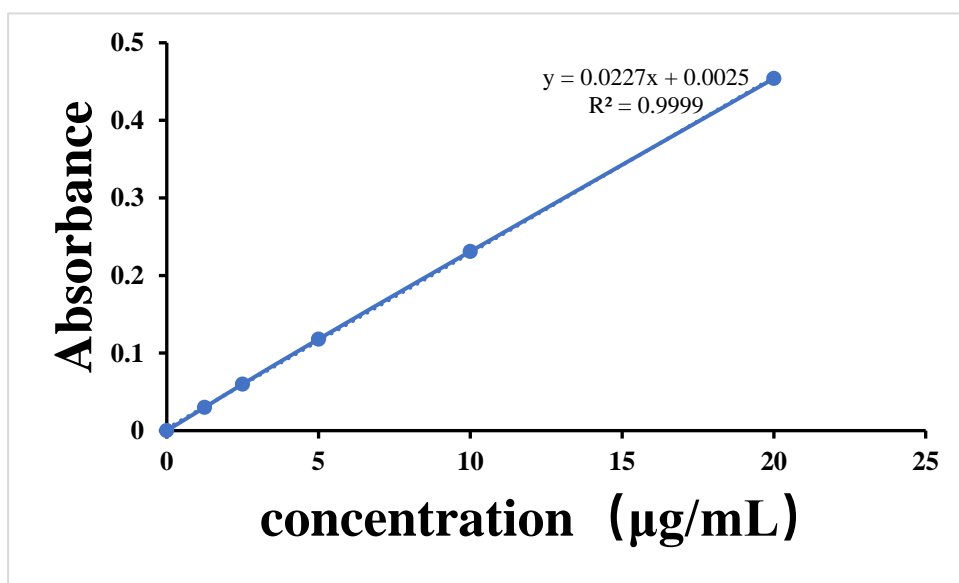


Figure S1. The standard curve of DOX.