

## Supplementary Material

Table S1- Cytocompatibility assessed by Presto Blue™ viability assay with hDPSCs. Corrected absorbance results are presented in Mean  $\pm$  SEM.

Timepoint Scaffold	24h	72h	120h	168h
PCL	0.025 $\pm$ 0.005	0.0378 $\pm$ 0.003	0.040 $\pm$ 0.004	0.079 $\pm$ 0.044
McC1%	0.012 $\pm$ 0.001	0.028 $\pm$ 0.003	0.027 $\pm$ 0.002	0.054 $\pm$ 0.005
McC2%	0.010 $\pm$ 0.001	0.021 $\pm$ 0.000	0.017 $\pm$ 0.002	0.040 $\pm$ 0.005
McC3%	0.023 $\pm$ 0.001	0.047 $\pm$ 0.002	0.052 $\pm$ 0.002	0.067 $\pm$ 0.002
MC1%	0.016 $\pm$ 0.002	0.028 $\pm$ 0.002	0.030 $\pm$ 0.003	0.042 $\pm$ 0.010
MC2%	0.020 $\pm$ 0.004	0.023 $\pm$ 0.002	0.033 $\pm$ 0.004	0.050 $\pm$ 0.005
MC3%	0.025 $\pm$ 0.001	0.029 $\pm$ 0.001	0.049 $\pm$ 0.005	0.056 $\pm$ 0.004
CcC1%	0.042 $\pm$ 0.005	0.0480 $\pm$ 0.007	0.038 $\pm$ 0.008	0.066 $\pm$ 0.004
CcC2%	0.022 $\pm$ 0.001	0.026 $\pm$ 0.001	0.031 $\pm$ 0.002	0.044 $\pm$ 0.004
CcC3%	0.019 $\pm$ 0.001	0.031 $\pm$ 0.002	0.047 $\pm$ 0.003	0.051 $\pm$ 0.004
Cells	0.021 $\pm$ 0.001	0.031 $\pm$ 0.001	0.036 $\pm$ 0.001	0.055 $\pm$ 0.003

Table S2- Percentage of inhibition of cell viability of each scaffold in contact with the hDPSCs. After normalization of the Control group (100%), results are presented as Mean  $\pm$  SEM for the percentage of viability inhibition, comparing to the control group.

Timepoint Scaffold	24h	72h	120h	168h
PCL	28.84 $\pm$ 11.70	-7.61 $\pm$ 6.62	-10.36 $\pm$ 10.75	-94.50 $\pm$ 18.14
McC1%	43.53 $\pm$ 4.23	13.39 $\pm$ 8.70	13.22 $\pm$ 7.30	4.61 $\pm$ 0.22
McC2%	46.75 $\pm$ 2.32	31.81 $\pm$ 1.05	21.93 $\pm$ 1.61	31.19 $\pm$ 0.25
McC3%	-12.55 $\pm$ 5.25	-18.11 $\pm$ 0.00	-30.11 $\pm$ 2.31	-71.84 $\pm$ 11.18
MC1%	24.16 $\pm$ 7.37	12.34 $\pm$ 5.21	15.43 $\pm$ 9.58	-70.39 $\pm$ 17.35
MC2%	5.20 $\pm$ 20.91	7.09 $\pm$ 4.23	8.46 $\pm$ 10.83	-41.92 $\pm$ 17.08
MC3%	-20.61 $\pm$ 3.48	-10.24 $\pm$ 0.00	-35.46 $\pm$ 14.51	-63.77 $\pm$ 16.09
CcC1%	-104.10 $\pm$ 24.49	-51.44 $\pm$ 23.27	-71.47 $\pm$ 15.18	-69.96 $\pm$ 8.29
CcC2%	-7.71 $\pm$ 4.44	-24.41 $\pm$ 13.84	-28.03 $\pm$ 8.98	-18.29 $\pm$ 22.68
CcC3%	6.82 $\pm$ 6.61	2.62 $\pm$ 5.79	-30.58 $\pm$ 8.22	-19.86 $\pm$ 4.20

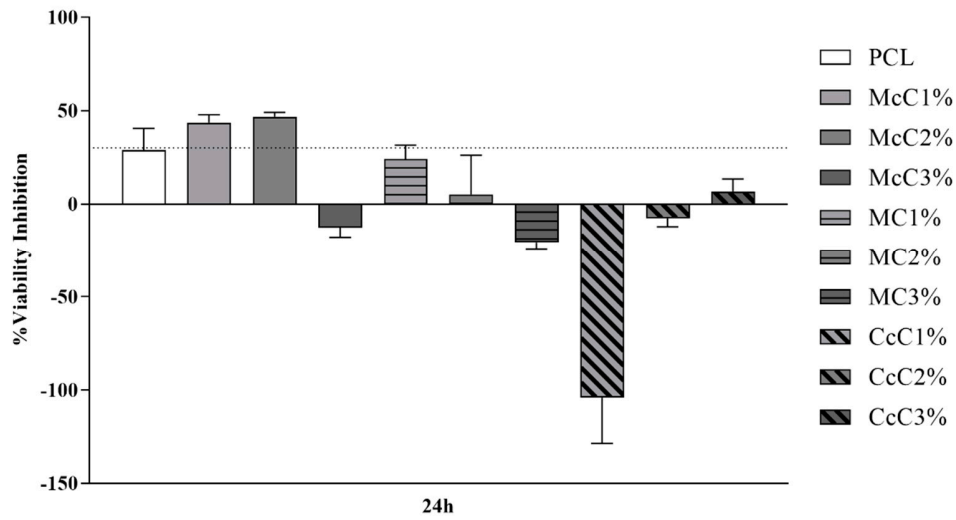


Figure S1- Percentage of inhibition of cell viability of each scaffold in contact with the hDPSCs at 24h. The dashed line represents the 30% inhibition limit, above which the effect is considered cytotoxic according to the ISO 10993-5:2009 guidelines.

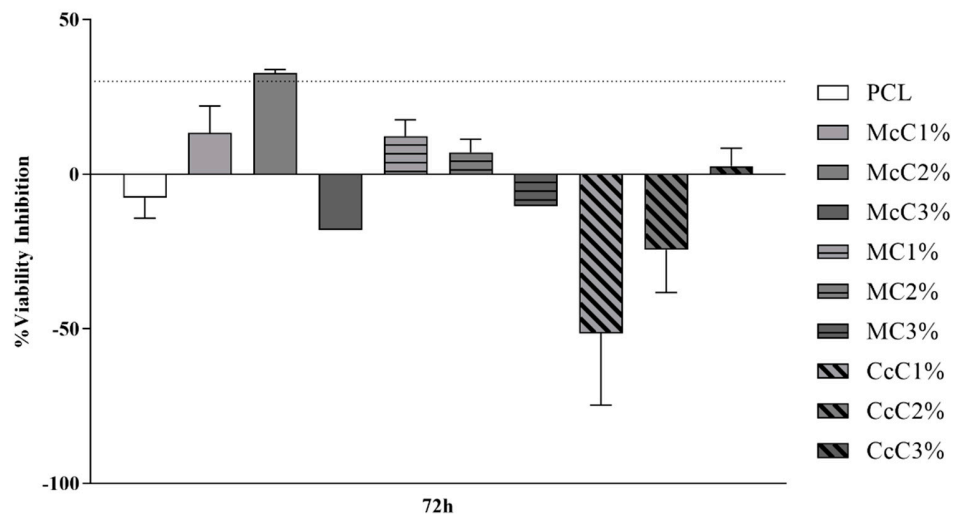


Figure S2- Percentage of inhibition of cell viability of each scaffold in contact with the hDPSCs at 72h. The dashed line represents the 30% inhibition limit, above which the effect is considered cytotoxic according to the ISO 10993-5:2009 guidelines.

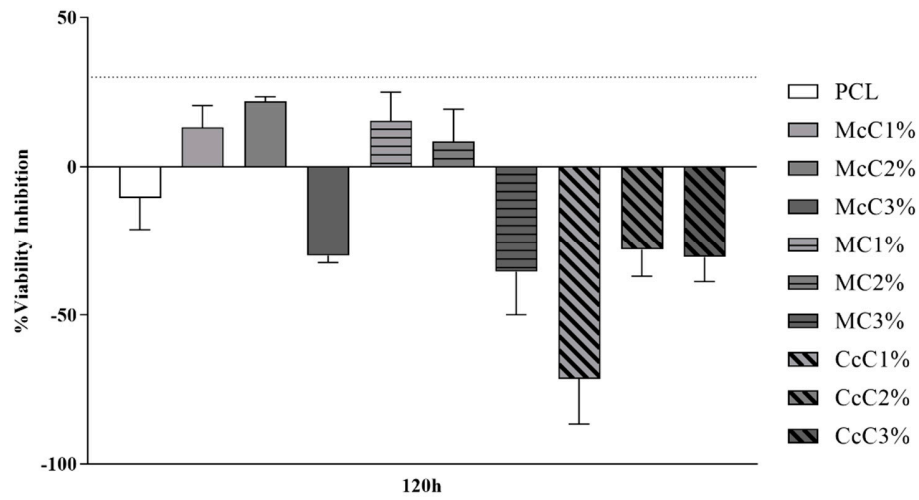


Figure S3- Percentage of inhibition of cell viability of each scaffold in contact with the hDPSCs at 120h. The dashed line represents the 30% inhibition limit, above which the effect is considered cytotoxic according to the ISO 10993-5:2009 guidelines.

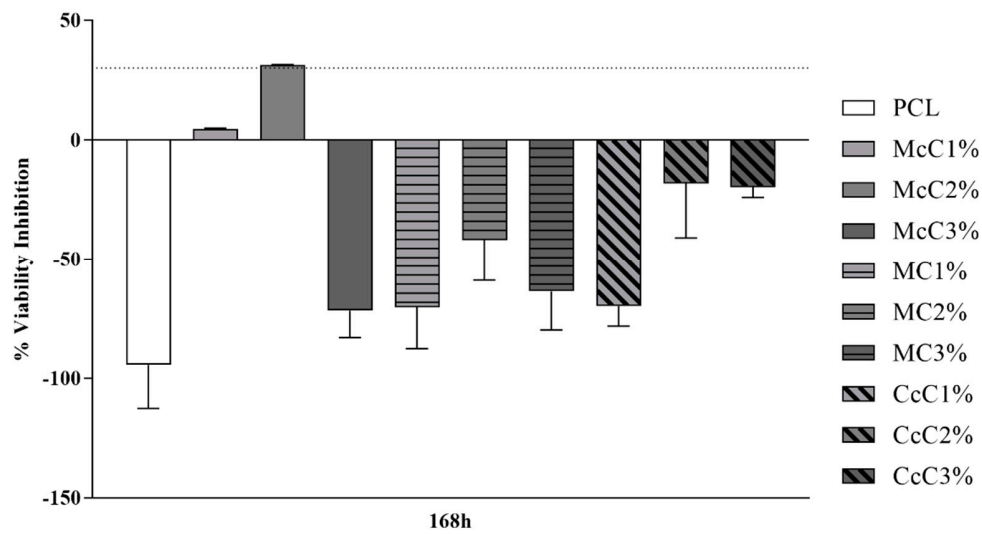


Figure S4- Percentage of inhibition of cell viability of each scaffold in contact with the hDPSCs at 168h. The dashed line represents the 30% inhibition limit, above which the effect is considered cytotoxic according to the ISO 10993-5:2009 guidelines.