

## Supplementary Information

Sompit Wanwong <sup>1,\*</sup>, Weradesh Sangkhun <sup>1</sup> and Pimsumon Jiamboonsri <sup>2</sup>

1 Materials Technology Program, School of Energy, Environment and Materials, King Mongkut's University of Technology Thonburi, 126 Pracha Uthit Road, Bang Mod, Thung Khru, Bangkok 10140, Thailand

2 Faculty of Medicine, King Mongkut's Institute of Technology, Bangkok 10520, Thailand

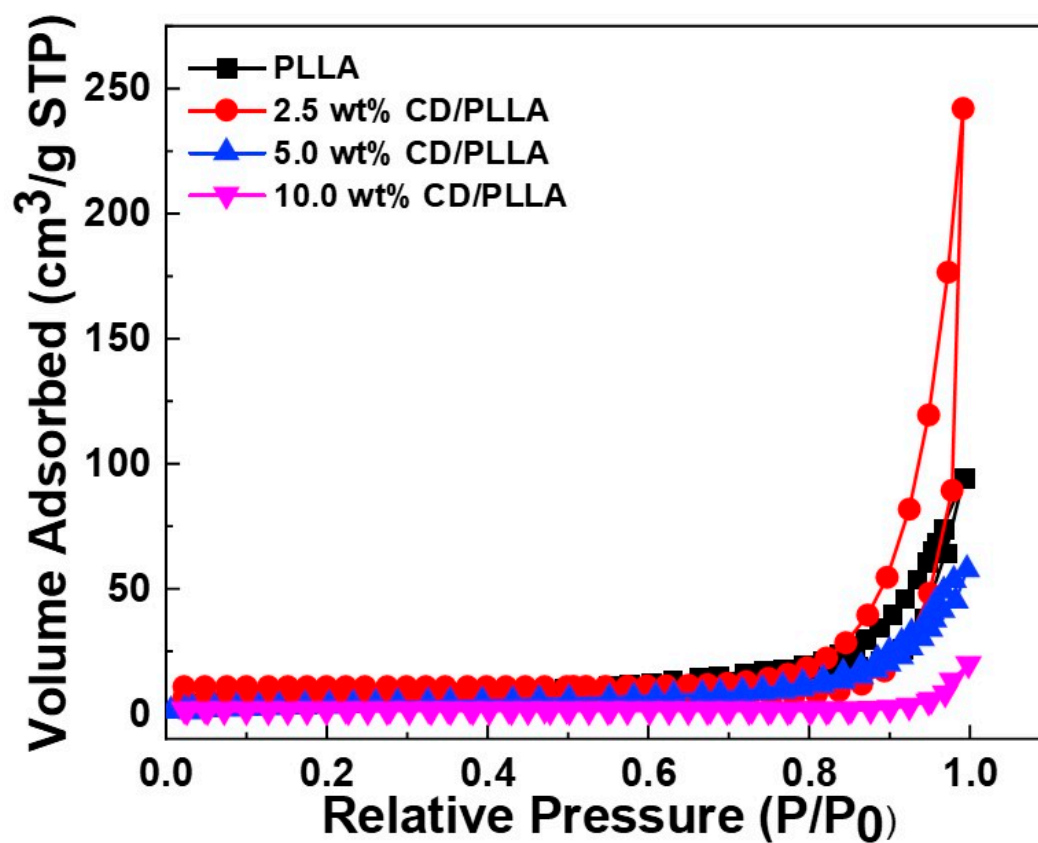
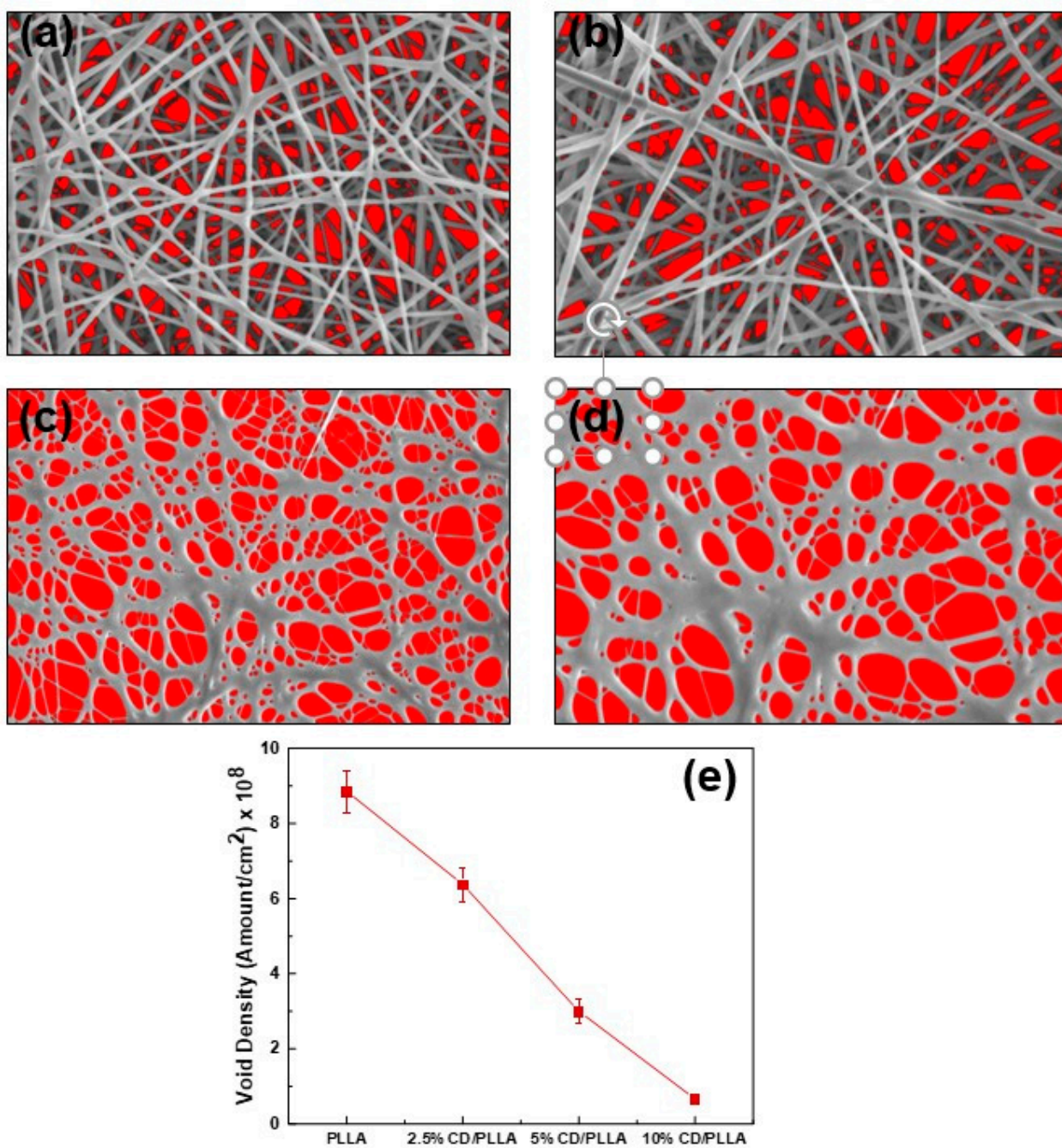


Figure S1. BET adsorption isotherm of PLLA and CD/PLLA nanofibers.



**Figure S2.** Voids (in red color) of (a) PLLA, (b) 2.5wt% CD/PLLA, (c) 5wt% CD/PLLA, (d) 10wt% CD/PLLA nanofibers and (e) void density plot.



**Figure S3.** Photograph of electrospun CD/PLLA mat