

Figure S1 The PCL/TA solution with different weight ratios (9.5:0.5, 9:1 and 8:2).

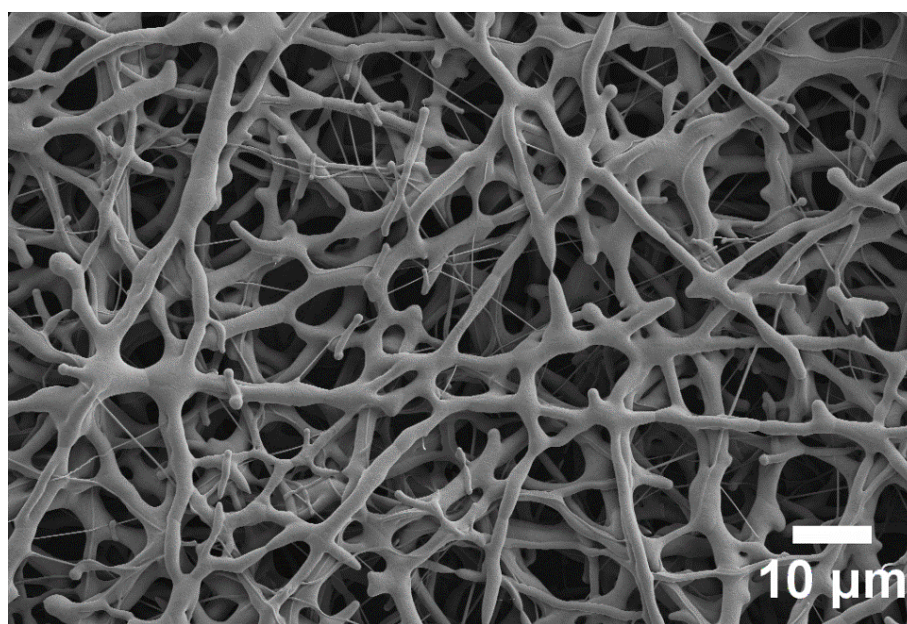


Figure S2 SEM image of electrospun pure PCL using the HFIP alone.

Table S1. Water contact angle and swelling ratio of electrospun PCL and PCL/TA nanofiber scaffolds from solutions with different PCL/TA weight ratios 9.5:5 and 9:1.

| Sample | Water contact angle (°) | Swelling ratio |
|------------------|-------------------------|----------------|
| PCL | 127.27 ± 1.26 | 0.03 ± 0.04 |
| PCL/TA (9.5:0.5) | 84.83 ± 3.77 | 2.25 ± 0.32 |
| PCL/TA (9:1) | 51.43 ± 7.03 | 2.73 ± 0.27 |

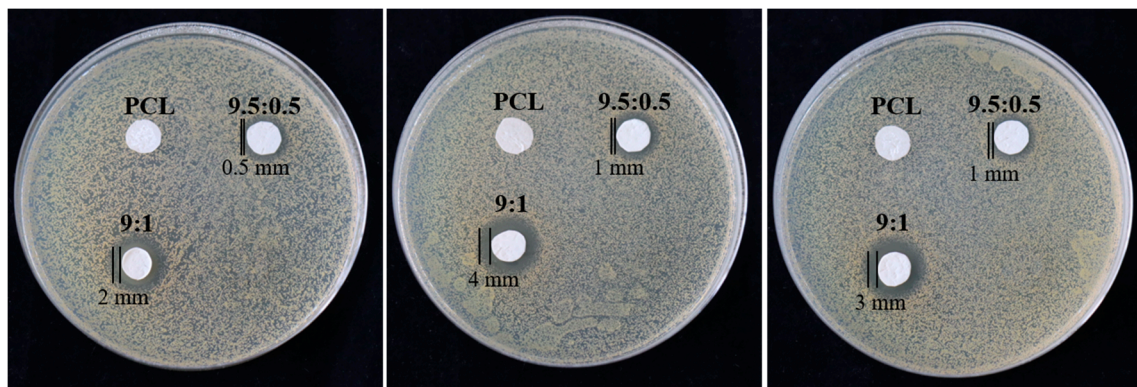


Figure S3 Antibacterial property of PCL and PCL/TA nanofiber scaffolds from solutions with different PCL/TA weight ratios 9.5:0.5 and 9:1.