

Phase Morphology, Mechanical, and Thermal Properties of Calcium Carbonate-Reinforced Poly(L-lactide)-*b*-poly(ethylene glycol)-*b*-poly(L-lactide) Bioplastics

Prasong Srihanam, Wiriya Thongsomboon and Yodthong Baimark *

Biodegradable Polymers Research Unit, Department of Chemistry and Centre of Excellence for Innovation in Chemistry, Faculty of Science, Mahasarakham University, Mahasarakham 44150, Thailand

* Correspondence: yodthong.b@msu.ac.th

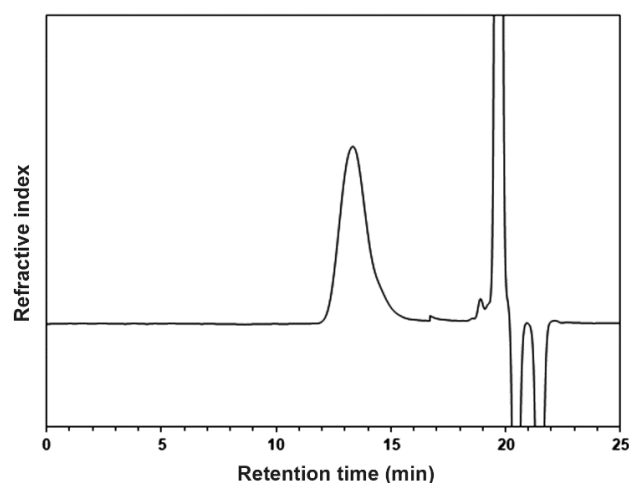


Figure S1. GPC curve of a chain-extended PLLA-*b*-PEG-*b*-PLLA.

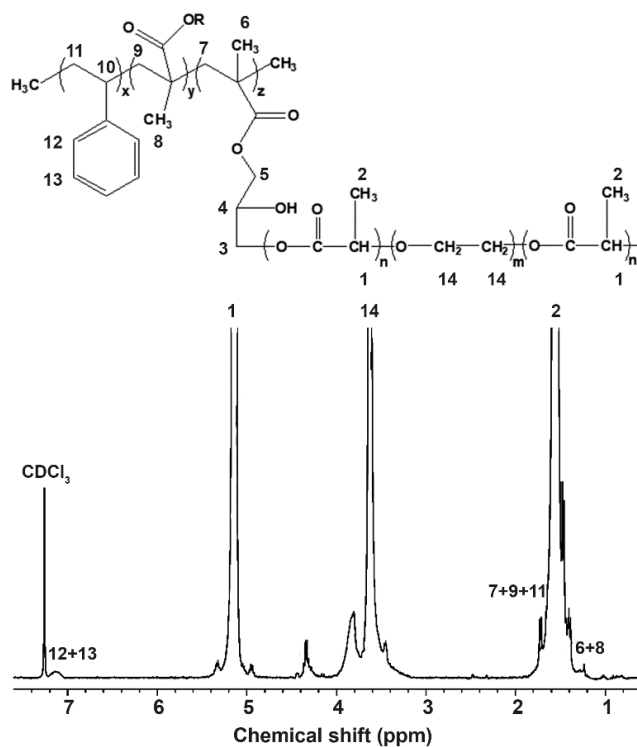


Figure S2. ¹H-NMR spectrum of a chain-extended PLLA-*b*-PEG-*b*-PLLA.

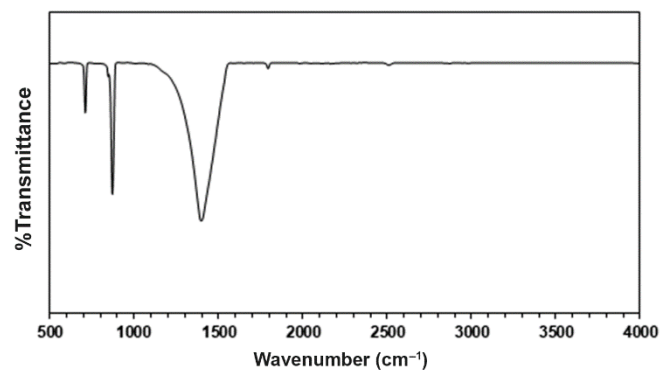


Figure S3. FTIR spectrum of CaCO₃ powder.

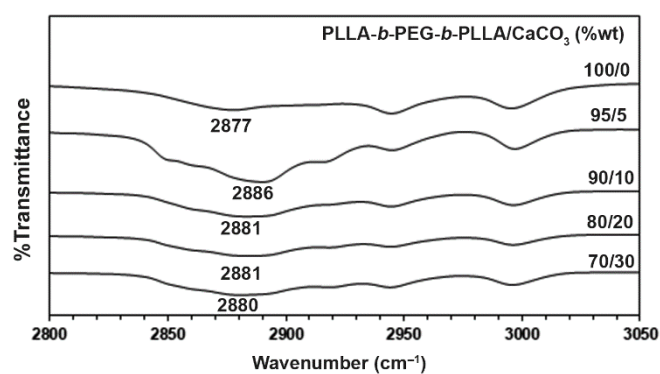


Figure S4. Expanded ATR-FTIR spectra of PLLA-*b*-PEG-*b*-PLLA/CaCO₃ composite films with various CaCO₃ ratios.

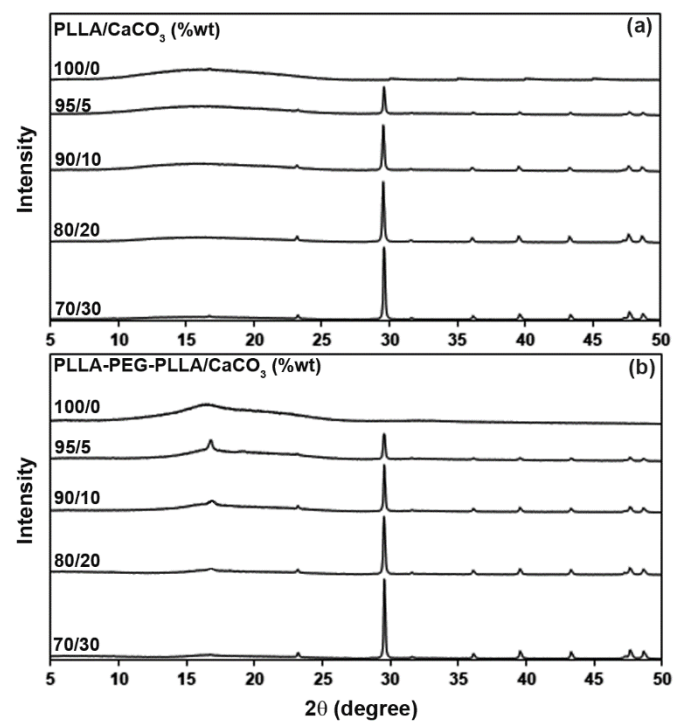


Figure S5. XRD patterns of (a) PLLA/CaCO₃ and (b) PLLA-*b*-PEG-*b*-PLLA/CaCO₃ films with various CaCO₃ ratios.