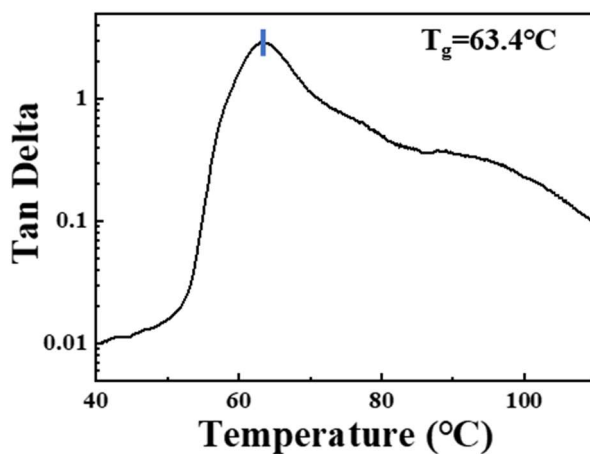


Supplementary Material for

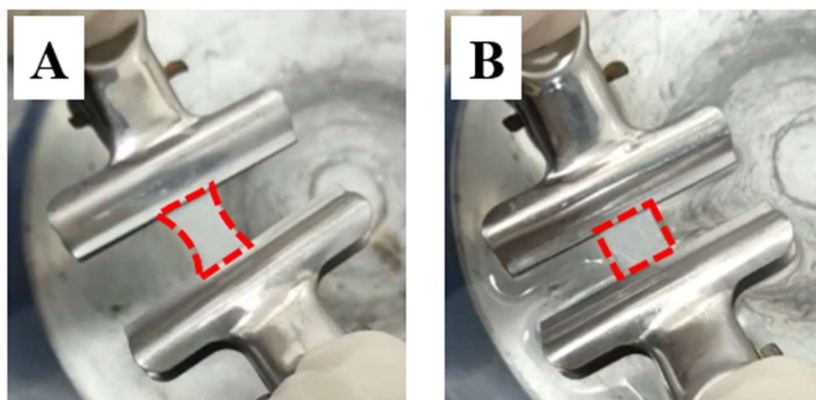
# Programmable Transition between Adhesive/Anti-adhesive Performances on Porous PVDF Spheres Supported by Shape Memory PLLA

Jiaqin Zhao, Liang Zhang, Xiong Cheng, Jiayao Wang, Yongjin Li and Jichun You\*

College of Material, Chemistry and Chemical Engineering, Hangzhou Normal University, Hangzhou 311121, China; Jiaqin\_Zhao@163.com (J.Z.); liangzhang1128@gmail.com (L.Z.); 2019112009005@hznu.stu.edu.cn (X.C.); jiayao-wang@outlook.com (J.W.); yongjin\_li@hznu.edu.cn (Y.L.)



**Figure S1.** Changes of  $\tan\delta$  with increasing temperature for PLLA.



**Figure S2.** Images of stretched and recovered PVDF@PLLA surfaces. (A) draw ratio = 1.5, (B) Recovered.