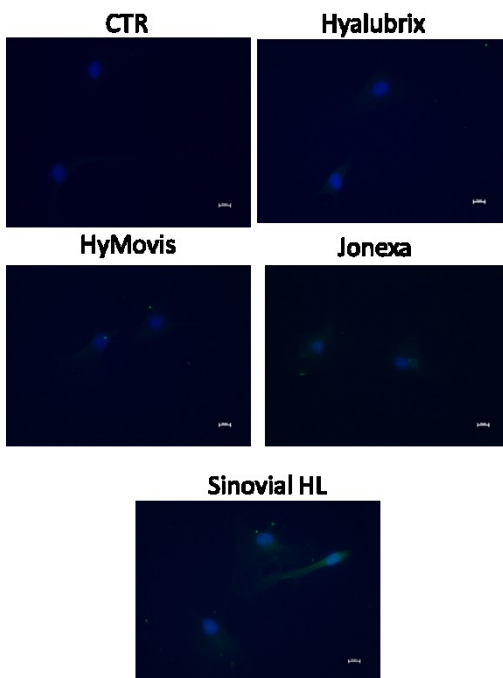


**Figure S1 a.** Immunofluorescence staining of COMP-2 in treated and untreated primary human chondrocytes. In the blue nuclei, a fitc-green antibody was used for COMP-2. Pictures are from one representative experiment. Magnification 40X.



**Figure S1 b.** Immunofluorescence staining of HAS-1 in treated and untreated primary human synoviocytes. In the blue nuclei, a fitc-green antibody was used for HAS-1. Pictures are from one representative experiment. Magnification 40X.