

Preparation and characterization of salt-mediated injectable thermosensitive chitosan/pectin hydrogels for cell-embedding and culturing

G. Morello ^{1,2,†}, A. Polini ^{2,†,*}, F. Scalera ², R. Rizzo ², G. Gigli ^{1,2}, and F. Gervaso ^{2,*}

¹ Dipartimento di Matematica e Fisica E. De Giorgi, University of Salento, Campus Ecotekne, via Monteroni, 73100 Lecce, Italy; giulia.morello@unisalento.it; giuseppe.gigli@unisalento.it

² CNR NANOTEC – Institute of Nanotechnology c/o Campus Ecotekne, via Monteroni, 73100 Lecce, Italy; alessandro.polini@nanotec.cnr.it; francesca.scalera@nanotec.cnr.it; riccardo.rizzo@nanotec.cnr.it; francesca.gervaso@nanotec.cnr.it

[†] These authors equally contributed to this study.

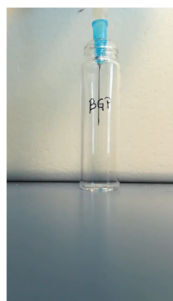
^{*} Correspondence: alessandro.polini@nanotec.cnr.it (AP), francesca.gervaso@nanotec.cnr.it (FG); Tel.: +39 0832 319305

Table S1. Hydrogel formulations based of CH+PEC with different GAs, with and without addition of complete DMEM.

Hydrogel compositions	
βGP	2.5 mL (Ch/Pec) + 0.5 mL βGP (0.04 M)
PB	2.5 mL (Ch/Pec) + 0.5 mL PB (0.04 M)
SHC	2.5 mL (Ch/Pec) + 0.5 mL SHC (0.04 M)
βGP-DMEM	2.5 mL (Ch/Pec) + 0.5 mL βGP (0.04 M) + 0.5 mL DMEM
PB-DMEM	2.5 mL (Ch/Pec) + 0.5 mL PB (0.04 M) + 0.5 mL DMEM
SHC-DMEM	2.5 mL (Ch/Pec) + 0.5 mL SHC (0.04 M) + 0.5 mL DMEM

Table S2. Schematic representation of three hydrogel formulations (βGP-PB-SHC) inversion tube test and injection test through G23 needle at r.t.

Inversion Tube Test	βGP	PB	SHC
t=0 r.t.	No flow	No Flow	No Flow
t=2 h 37°C	/	/	/
Injectability (r.t.)	Injectable	Injectable	Injectable



Video S1. Injection test. β GP hydrogel formulation injection through syringes equipped with a 23G needle at r.t.



Video S2. Injection test. PB hydrogel formulation injection through syringes equipped with a 23G needle at r.t.



Video S3. Injection test. SHC hydrogel formulation injection through syringes equipped with a 23G needle at r.t.

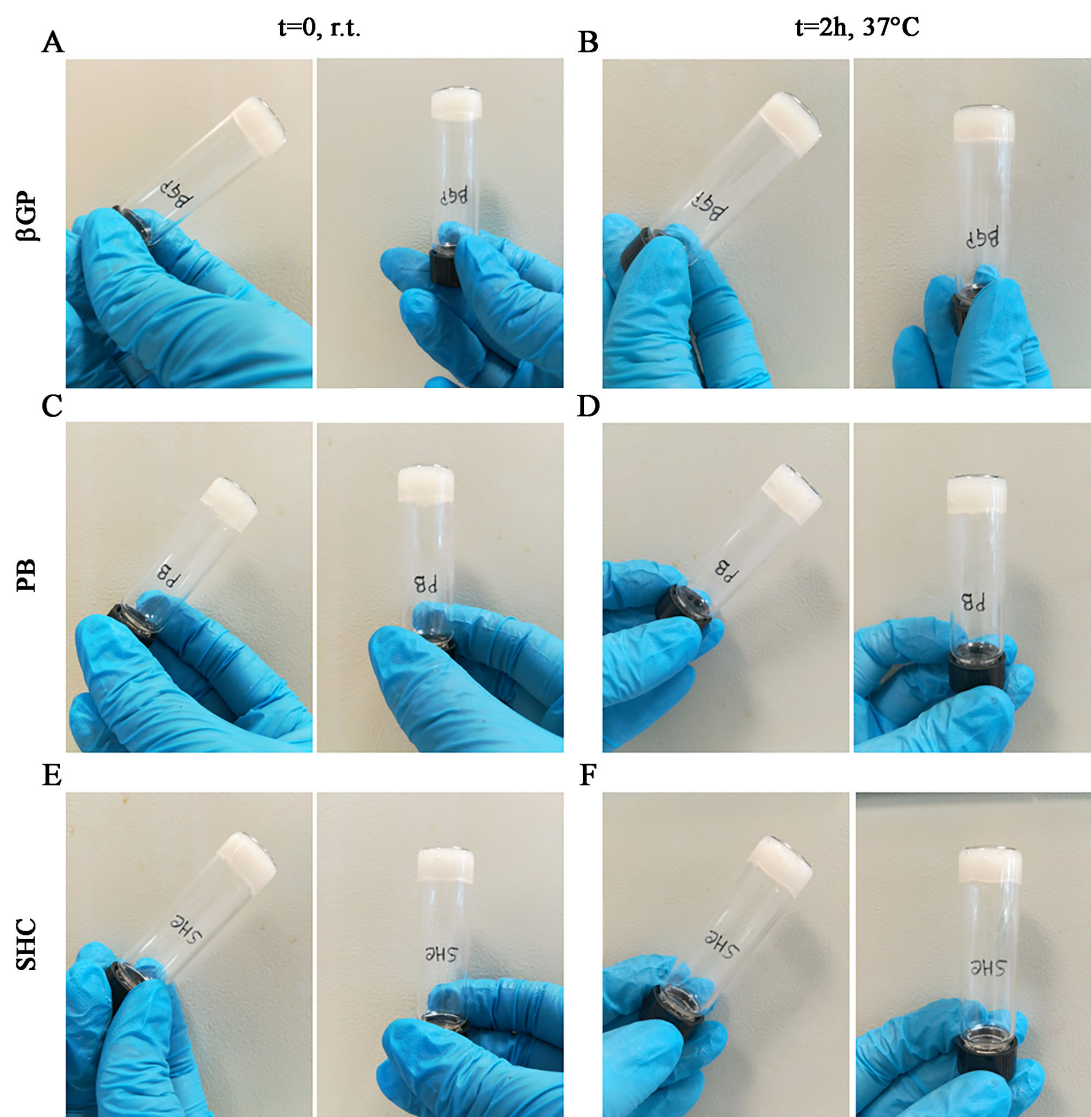


Figure S1. Inversion tube test. The three hydrogel formulations, β GP, PB and SHC, at r.t. after mixing (A, C, E), and after 2h of incubation at 37°C (B, D, F).

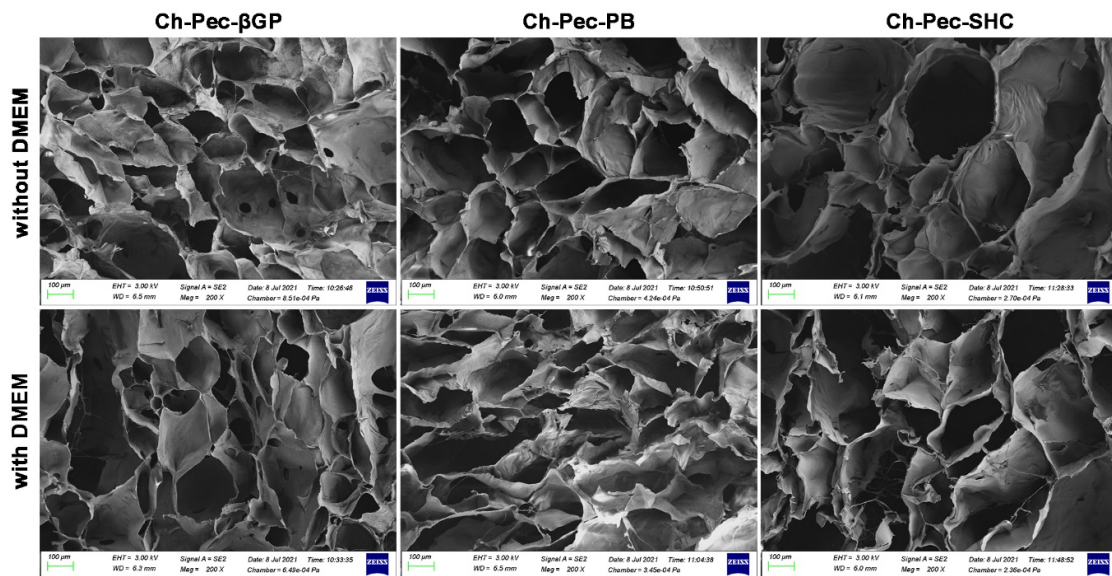
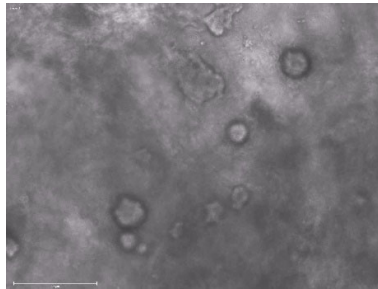


Figure S2. Scanning electron micrographs (SEM). Morphological analysis of hydrogel formulations (βGP-PB-SHC) with and without the addition of DMEM, at magnification 200× (scale bar =100 μm).



Video S4. Z-stack analysis at 10x of spheroids in Ch-Pec-βGP hydrogels after 21 days of culture.



Video S5. Z-stack analysis at 40x of a single spheroid in Ch-Pec-βGP hydrogels after 21 days of culture.