

[Supplementary Materials]

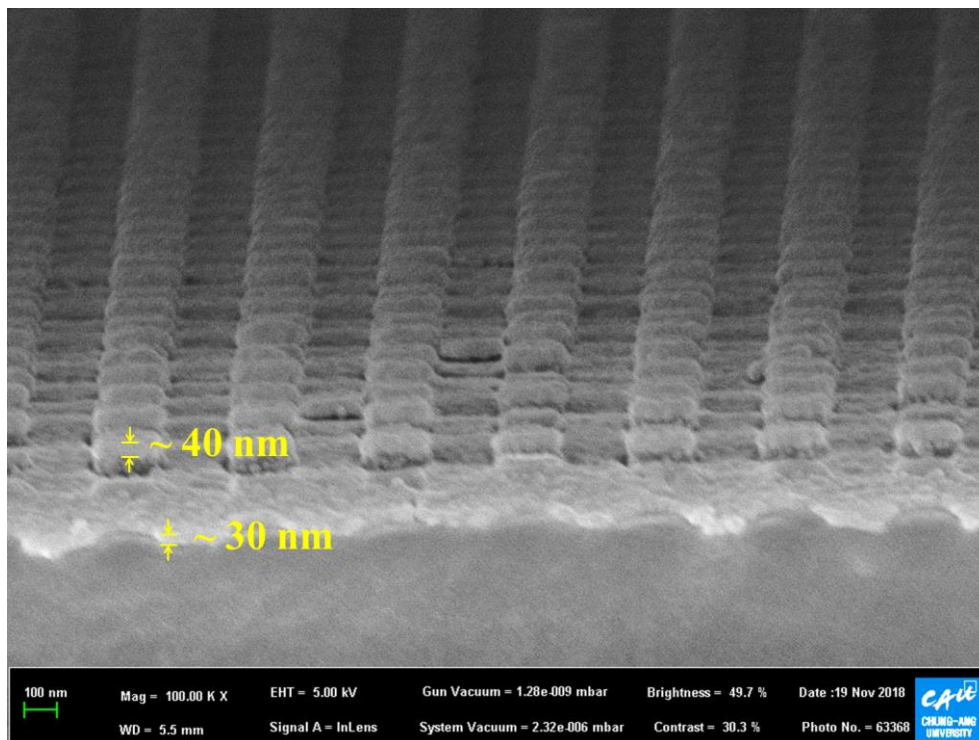


Figure S1. Enlarged cross-sectional SEM images of the fabricated plasmonic nanoantenna dot array MEF substrate with the target Ag thicknesses of 25 nm,

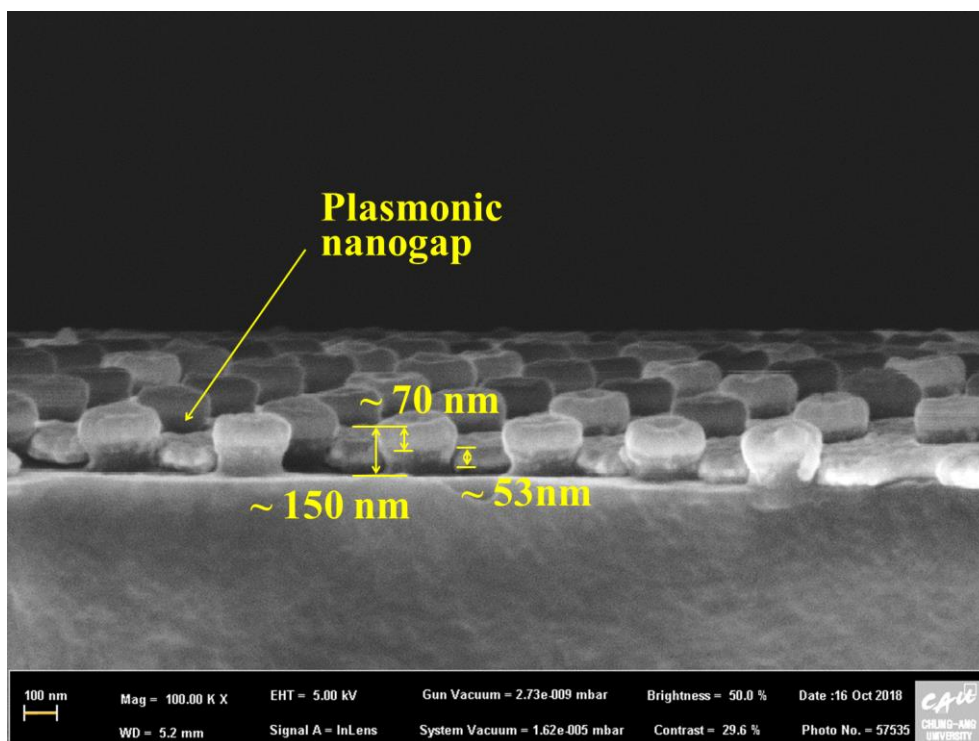


Figure S2. Enlarged cross-sectional SEM images of the fabricated plasmonic nanoantenna dot array MEF substrate with the target Ag thicknesses of 50 nm,

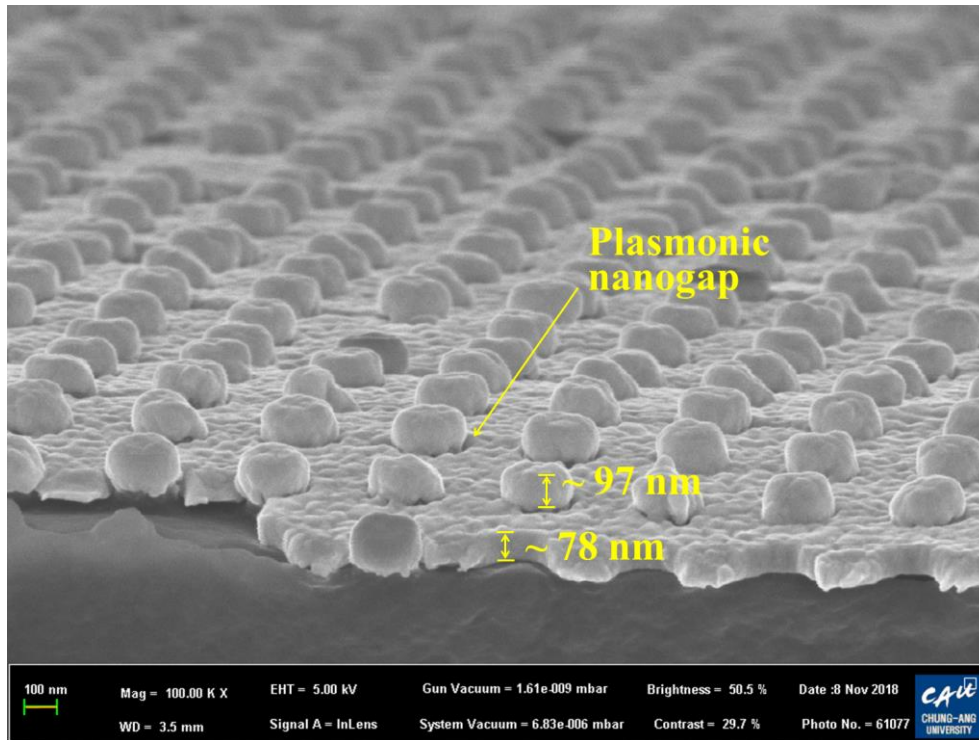


Figure S3. Enlarged cross-sectional SEM images of the fabricated plasmonic nanoantenna dot array MEF substrate with the target Ag thicknesses of 75 nm,

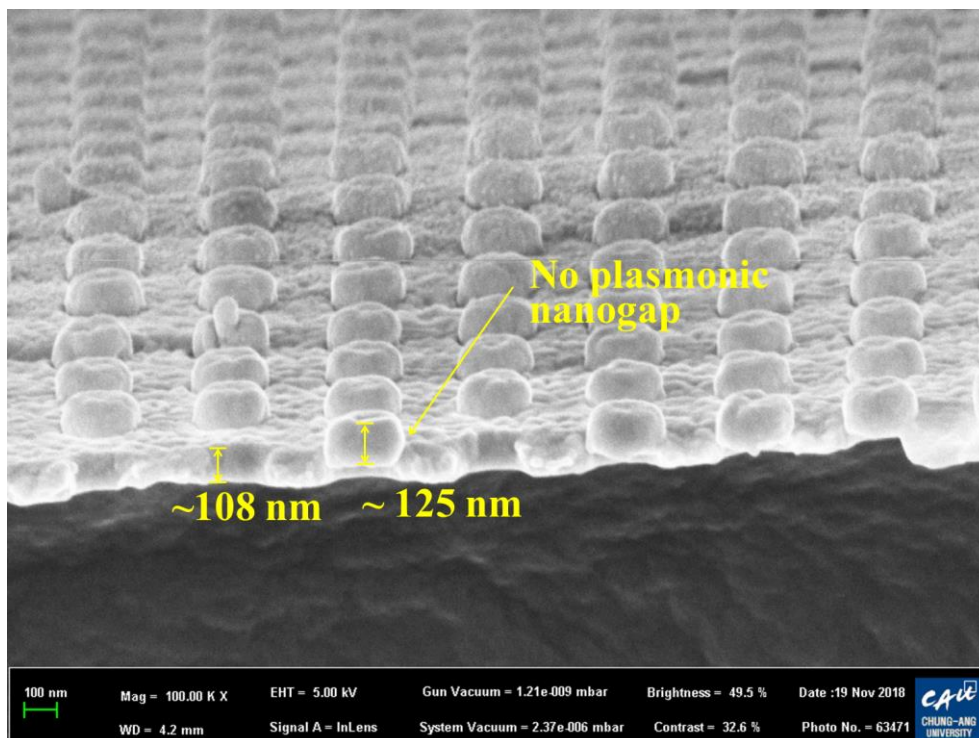


Figure S4. Enlarged cross-sectional SEM images of the fabricated plasmonic nanoantenna dot array MEF substrate with the target Ag thicknesses of 100 nm,