

Supplementary Material

High pressure crystallization of iPP nucleated with 1,3:2,4-bis(3,4-dimethylbenzylidene)sorbitol

Przemyslaw Sowinski¹, Ewa Piorkowska¹, Severine A. E. Boyer², Jean-Marc Haudin²

¹ Centre of Molecular and Macromolecular Studies, Polish Academy of Sciences, Sienkiewicza 112, 90 363, Lodz, Poland

² Centre for Material Forming, MINES ParisTech, PSL - Research University, UMR CNRS 7635, 1 Rue Claude Daunesse, 06904, Sophia Antipolis, France

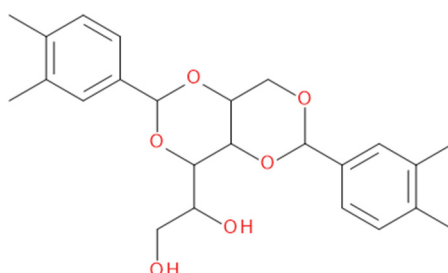


Figure S1. Chemical structure of 1,3:2,4-bis(3,4-dimethylbenzylidene)sorbitol.

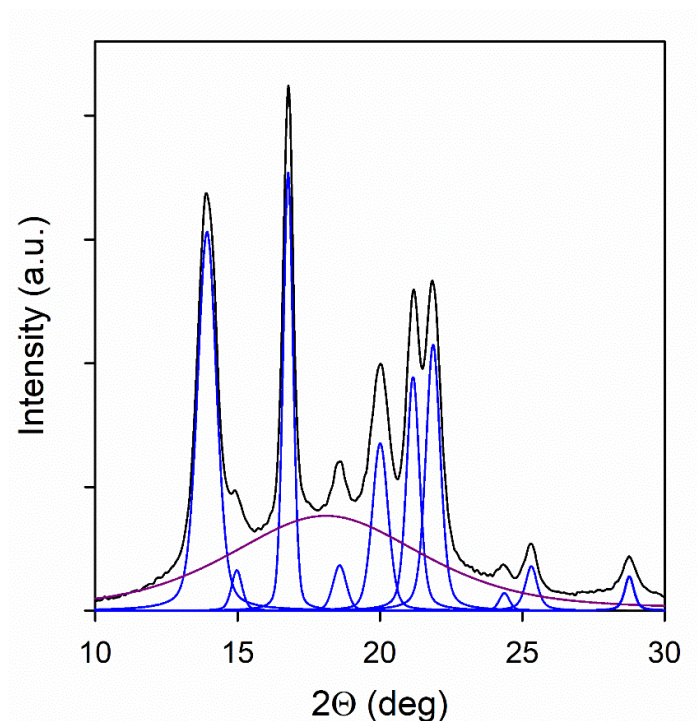


Figure S2. Example of deconvolution of the diffractogram, in 2θ range from 10 to 30°, recorded for the specimen containing both α and γ crystallographic forms.

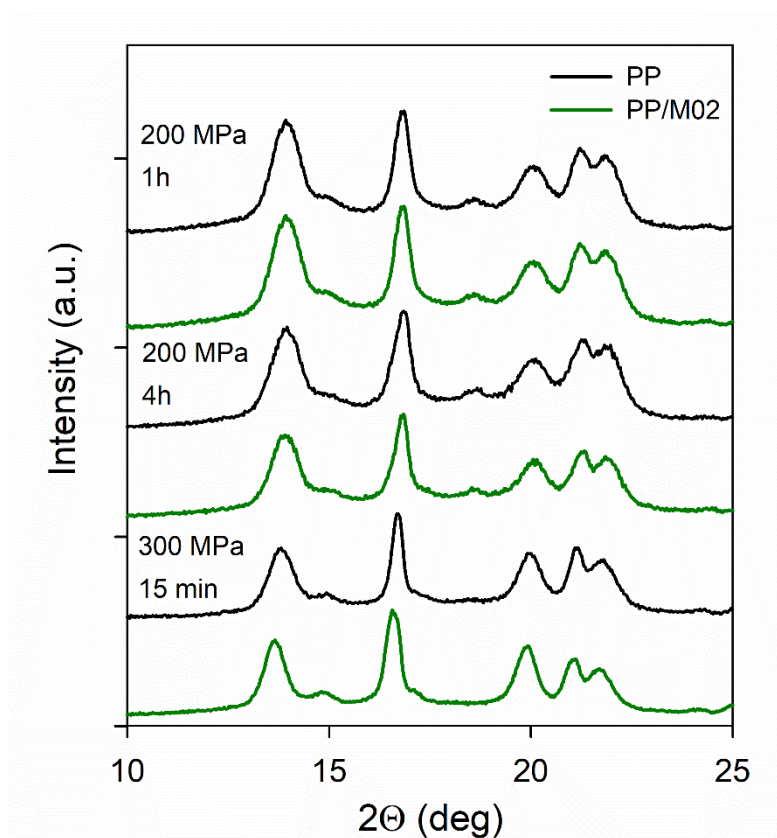


Fig. S3. X-ray diffractograms, in 2Θ range from 10 to 25°, of neat PP and PP/M02 crystallized according to protocol II.