

Supplementary material:

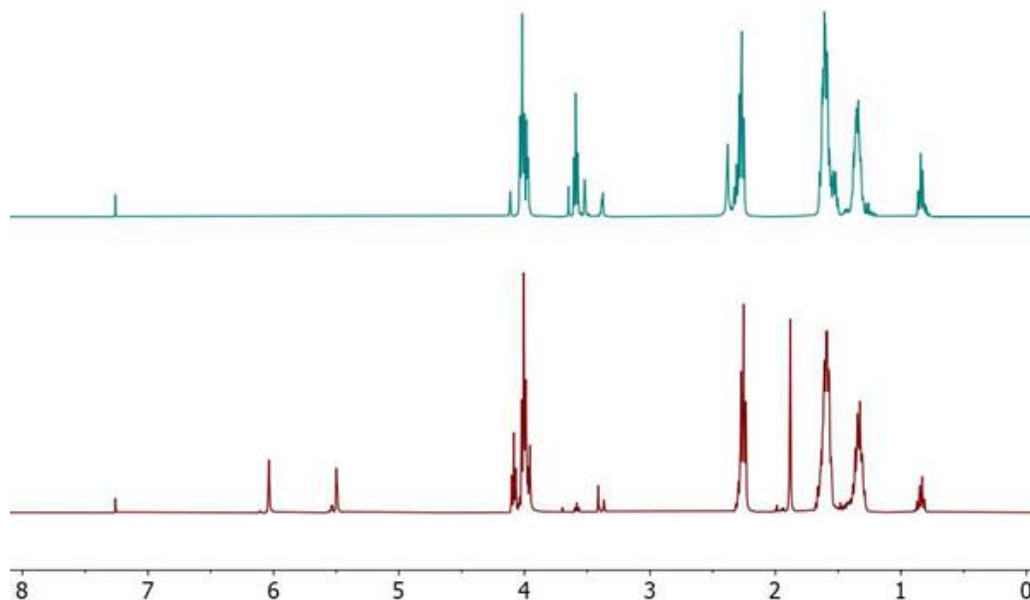


Figure S1 NMR spectrum of PCL (top) and PCLm (bottom). All peaks are referenced to the diluent CDCl_3

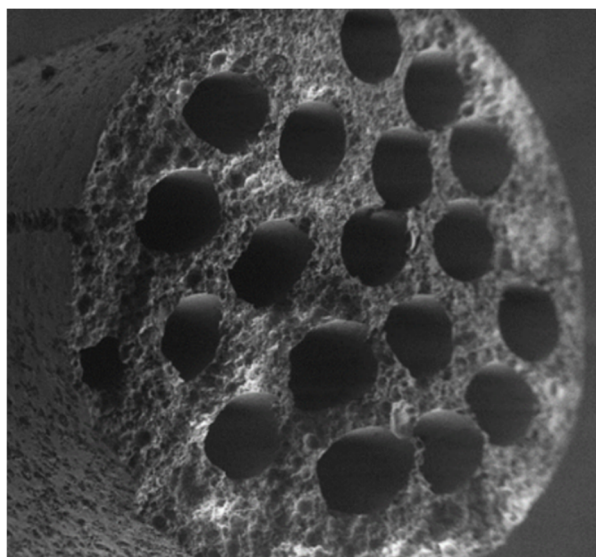


Figure S2 SEM image of microchanneled PCLm porous tube showing the 200 μm diameter channels and their arrangement over the tube section.



© 2019 by the authors. Submitted for possible open access publication under the terms and conditions of the Creative Commons Attribution (CC BY) license (<http://creativecommons.org/licenses/by/4.0/>).