

Supplementary Material

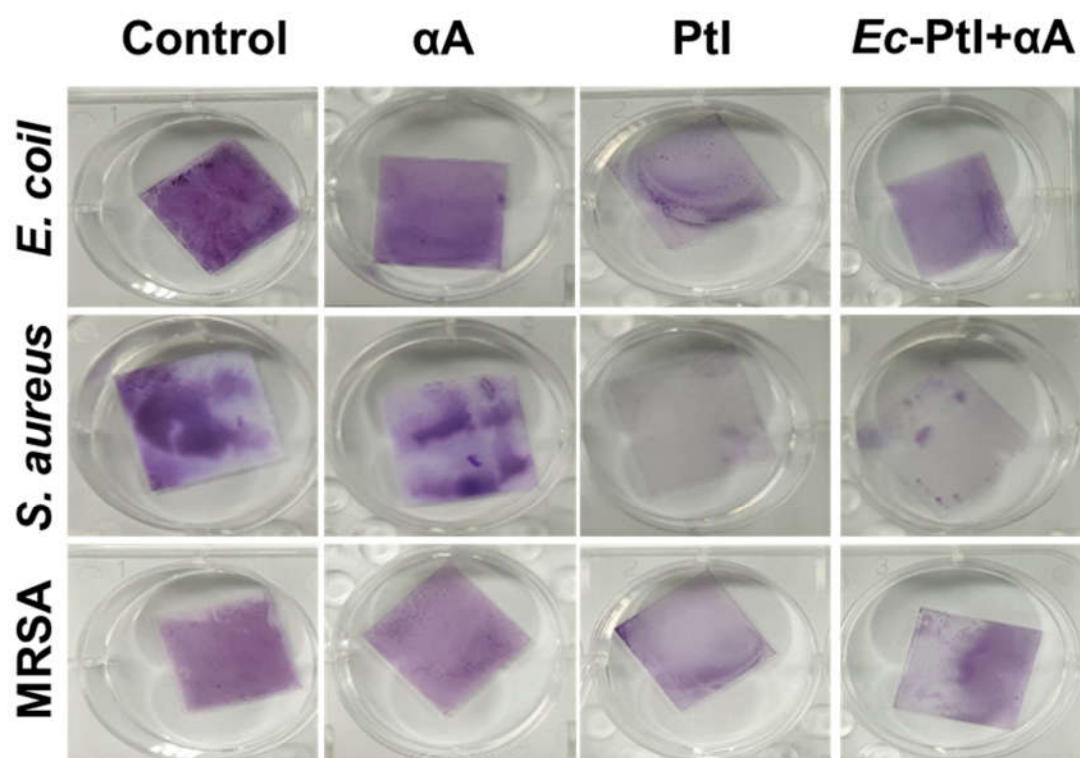
## Efficient Biofilms Eradication by Enzymatic-cocktail of Pancreatic Protease Type-I and Bacterial $\alpha$ -Amylase

Seung-Cheol Jee <sup>1</sup>, Min Kim <sup>1</sup>, Jung-Suk Sung <sup>1</sup> and Avinash A. Kadam <sup>2,\*</sup>

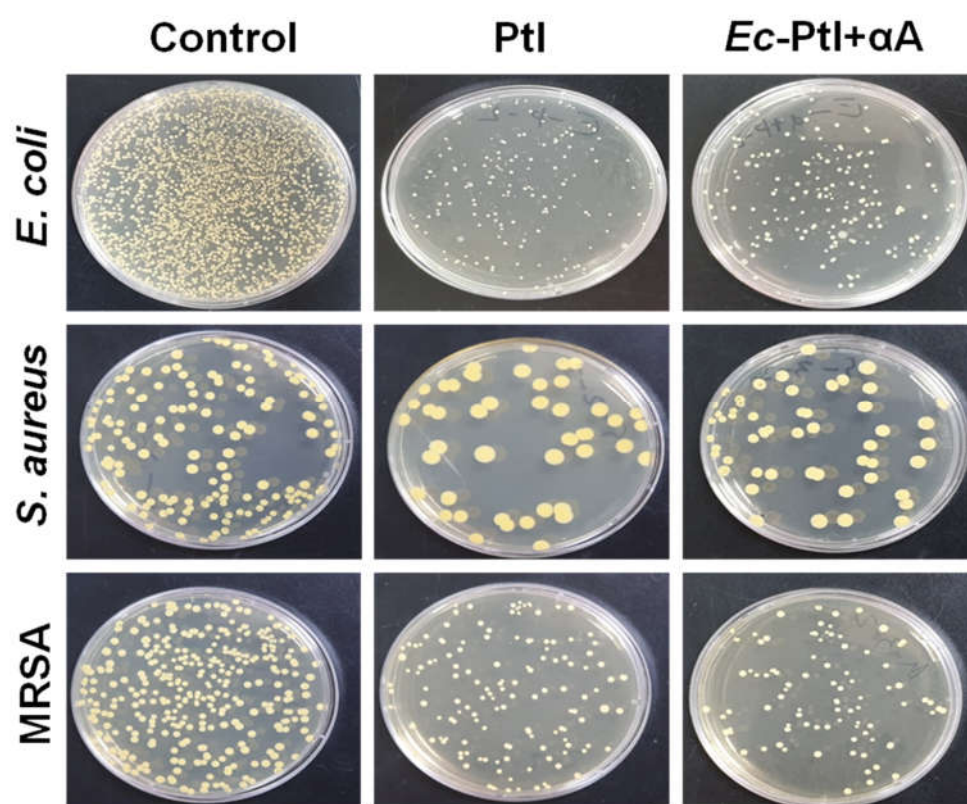
<sup>1</sup> Department of Life Science, College of Life Science and Biotechnology, Dongguk University-Seoul, Biomed Campus, 32 Dongguk-ro, Ilsandong-gu, Goyang-si 10326, Gyeonggi-do, South Korea

<sup>2</sup> Research Institute of Biotechnology and Medical Converged Science, Dongguk University-Seoul, Biomed Campus, 32 Dongguk-ro, Ilsandong-gu, Goyang-si 10326, Gyeonggi-do, South Korea

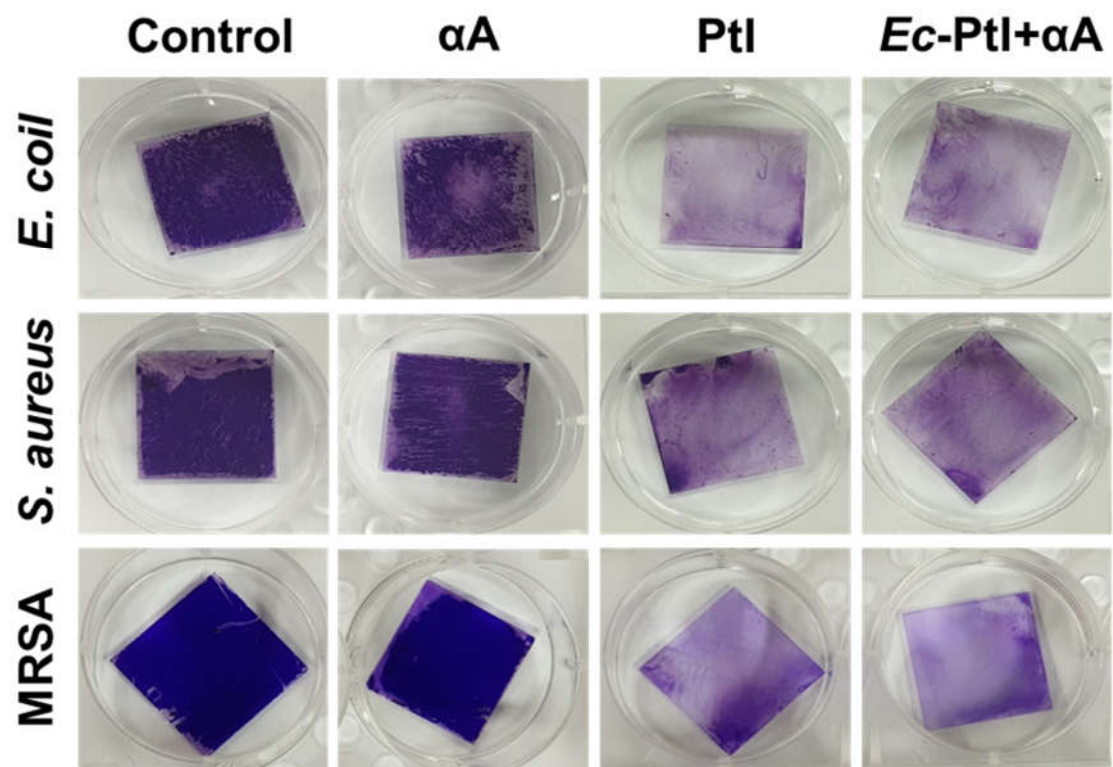
\* Correspondence: avikadam2010@gmail.com; kadamavinash@dongguk.edu, Tel.: 82-31-961-5616; Fax.: 82-31-961-5108



**Figure S1.** Inhibition effect of Ptl and *Ec*-Ptl+ $\alpha A$  against biofilm was performed by crystal violet (CV) staining.



**Figure S2.** Inhibition effect of protease and protease with  $\alpha$ - amylase against *E. coli*, *S. aureus*, MRSA in biofilm were performed by colony counting.



**Figure S3.** Prevention effect of PtI,  $\alpha$ A, and Ec-PtI+ $\alpha$ A against biofilm was performed by crystal violet (CV) staining.