

Mechanochemical Access to Elusive Metal Diphosphate Coordination Polymer

Andrea Ienco ^{1,*}, Giulia Tuci ¹, Annalisa Guerri ² and Ferdinando Costantino ³

¹ Consiglio Nazionale delle Ricerche - Istituto di Chimica dei Composti OrganoMetallici (CNR-ICCOM) Via Madonna del Piano 10, Sesto Fiorentino, Firenze (I-50019), Italy; andrea.ienco@iccom.cnr.it; giulia.tuci@iccom.cnr.it

² Dipartimento di Chimica "Ugo Schiff", University of Florence, Via della Lastruccia 3, Sesto Fiorentino, Firenze (I-50019), Italy; annalisa.guerri@unifi.it

³ Dipartimento di Chimica, Biologia e Biotecnologie, University of Perugia, Via Elce di Sotto 8, Perugia, (I-06123) Italy; ferdinando.costantino@unipg.it

* Correspondence: andrea.ienco@iccom.cnr.it; Tel +39-055-5225-282

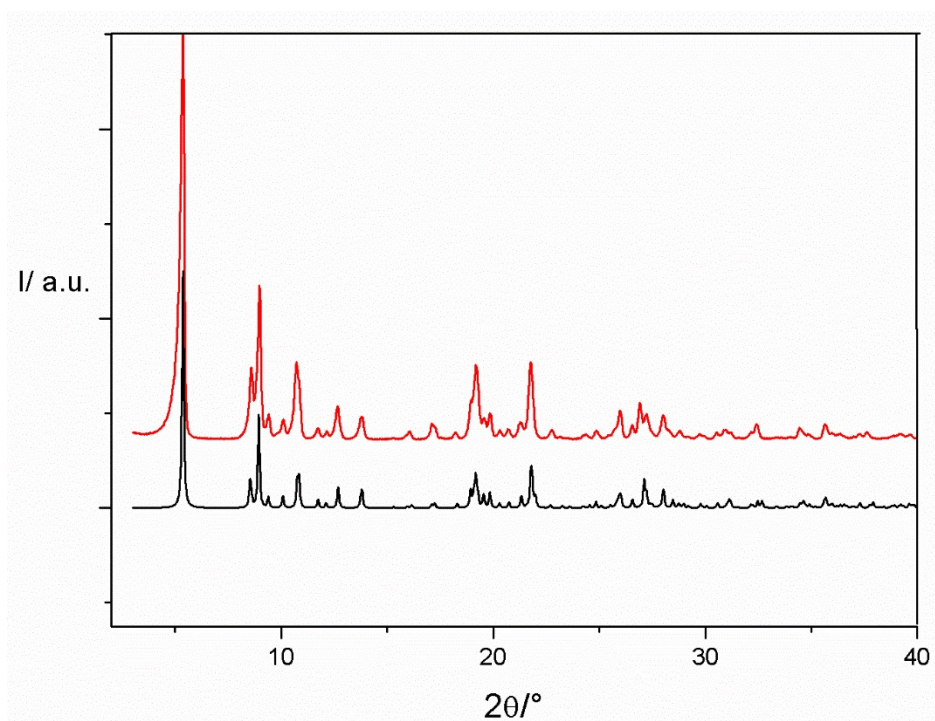


Figure S1. Comparison of the calculated (black) and experimental (red) X-ray pattern for 1.

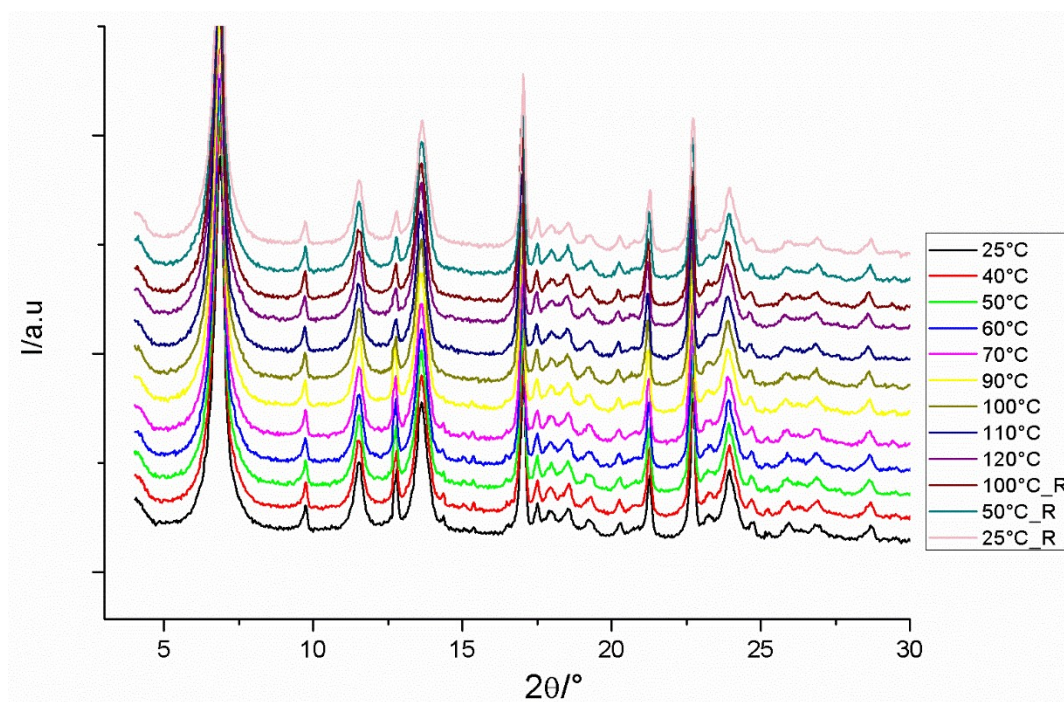


Figure S2. Temperature-dependent X-ray powder diffraction patterns for phase 2. The patterns recorded during the cooling are indicated with an R in the legend.