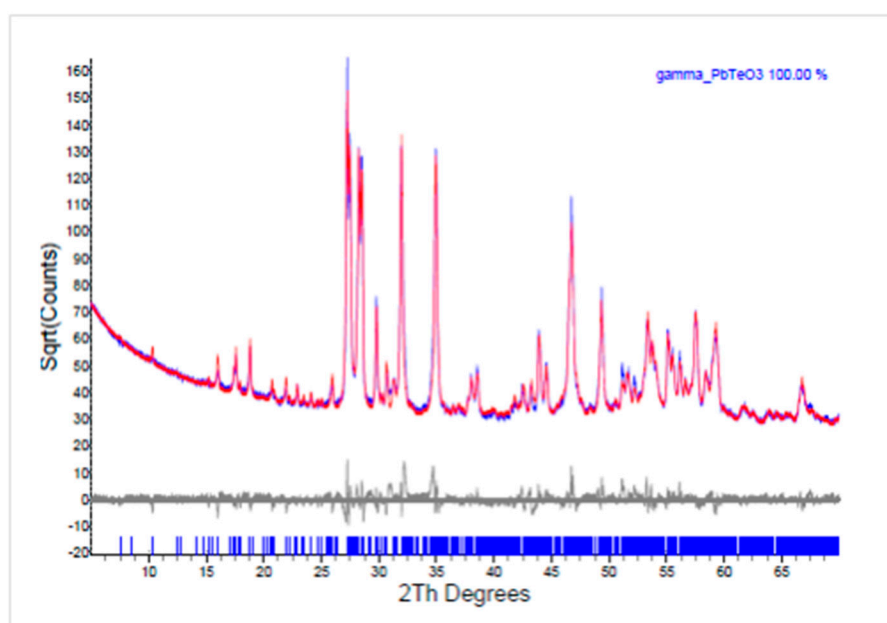
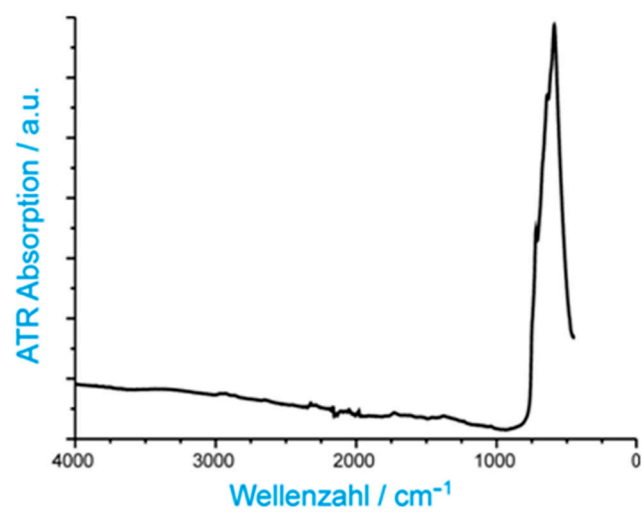


Determination of the correct composition of “hydrous lead(II) oxotellurate(IV)” as PbTeO_3 , crystallizing as a new polymorph

Supplementary material



Supplementary Figure 1. Rietveld refinement of $\gamma\text{-PbTeO}_3$.



Supplementary Figure 2. IR spectrum of γ -PbTeO₃.