

# Investigating the Influence of Three Different Atmospheric Conditions during the Synthesis Process of NMC811 Cathode Material

Arianna Tiozzo <sup>1</sup>, Keyhan Ghaseminezhad <sup>1,\*</sup>, Asya Mazzucco <sup>1</sup>, Mattia Giuliano <sup>2</sup>, Riccardo Rocca <sup>1</sup>, Matteo Dotoli <sup>3</sup>, Giovanna Nicol <sup>2</sup>, Carlo Nervi <sup>1,4,5</sup>, Marcello Baricco <sup>1</sup> and Mauro Francesco Sgroi <sup>1,\*</sup>

<sup>1</sup> Department of Chemistry and NIS-INSTM, University of Turin, 10125 Turin, Italy; arianna.tiozzo@unito.it (A.T.); asya.mazzucco@unito.it (A.M.); riccardo.rocca@unito.it (R.R.); carlo.nervi@unito.it (C.N.); marcello.baricco@unito.it (M.B.)

<sup>2</sup> C.R.F. SCpA, Strada Torino 50, 10043 Orbassano, Italy; mattia.giuliano@crf.it (M.G.); giovanna.nicol@crf.it (G.N.)

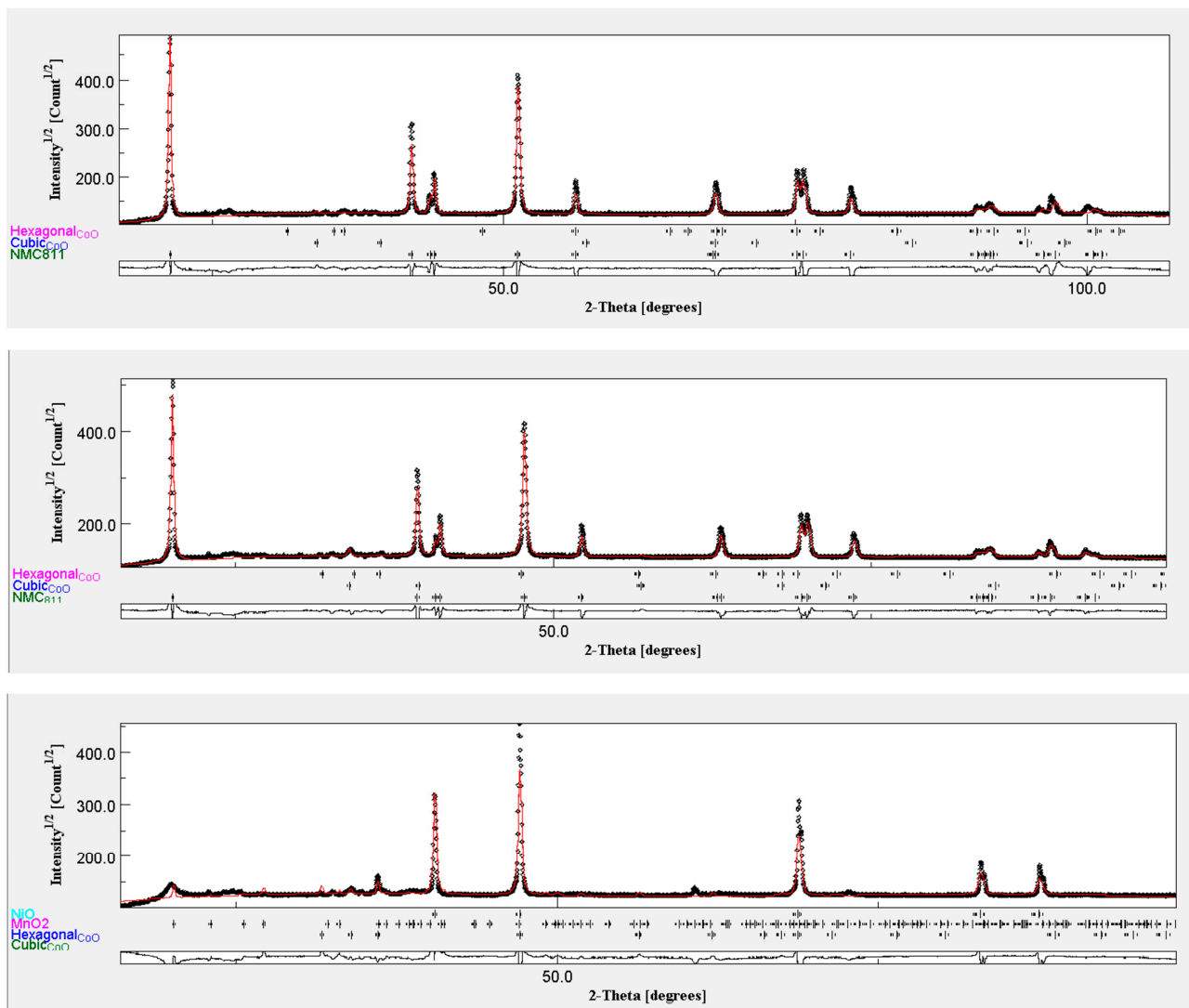
<sup>3</sup> Comau S.p.A., Via Rivalta 49, 10095 Grugliasco, Italy; matteo.dotoli@comau.com

<sup>4</sup> CIRCC, Via Celso Ulpiani 27, 70126 Bari, Italy

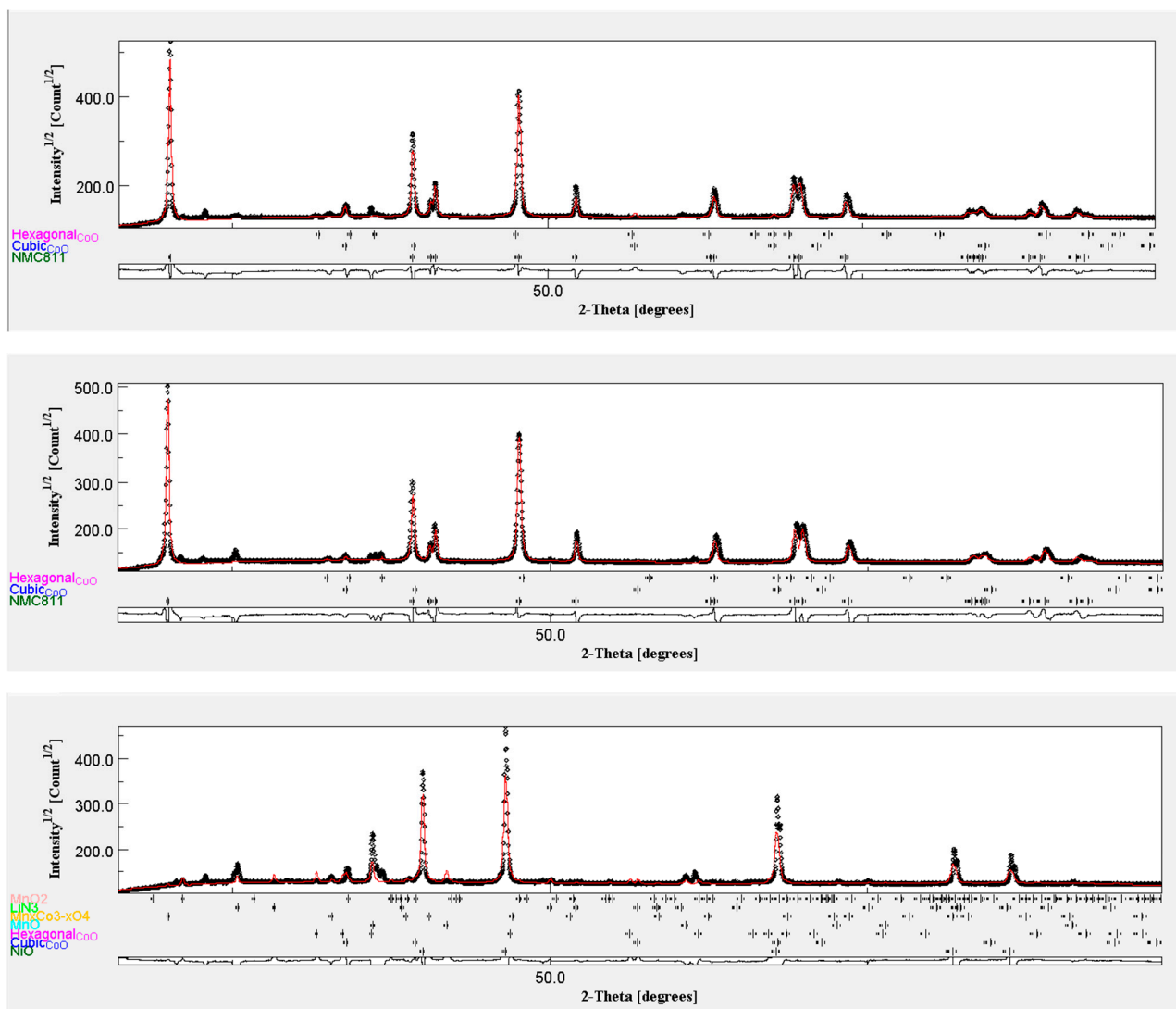
<sup>5</sup> Skolkovo Institute of Science and Technology Bolshoy Boulevard 30, Bldg. 1, 121205 Moscow, Russia

\* Correspondence: keyhan.ghaseminezhad@unito.it (K.G.); maurofrancesco.sgroi@unito.it (M.F.S.)

## Supplementary Materials

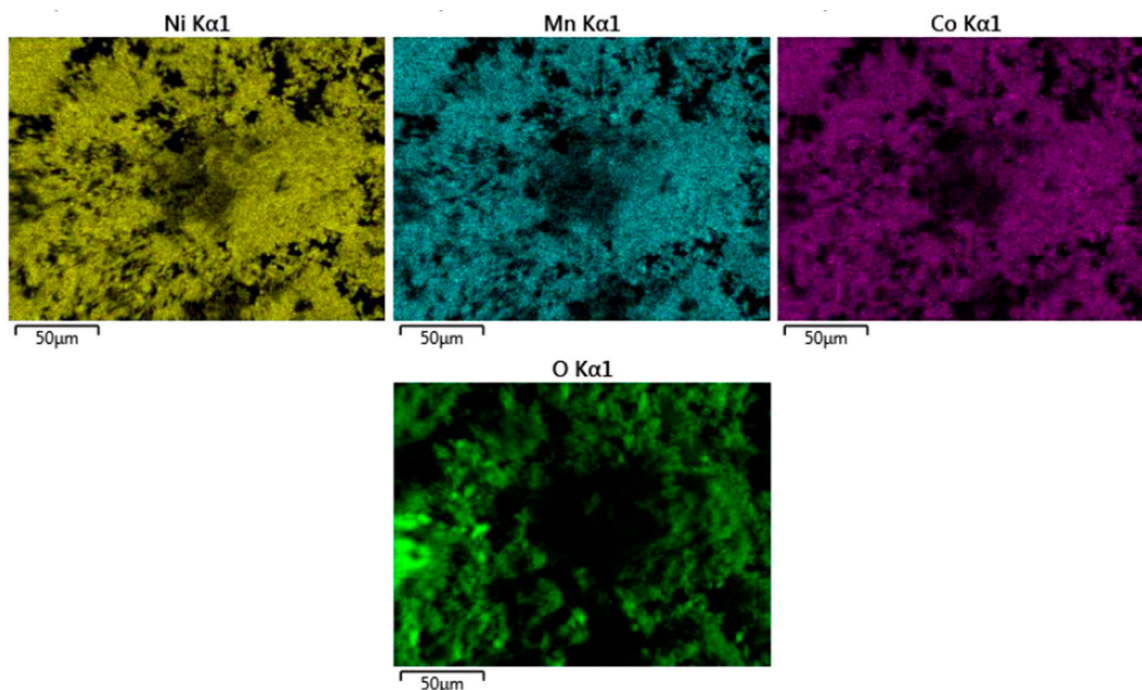


**Figure S1.** Rietveld analysis for CPT samples obtained in O<sub>2</sub> atmosphere (top), air atmosphere (middle), N<sub>2</sub> atmosphere (bottom).

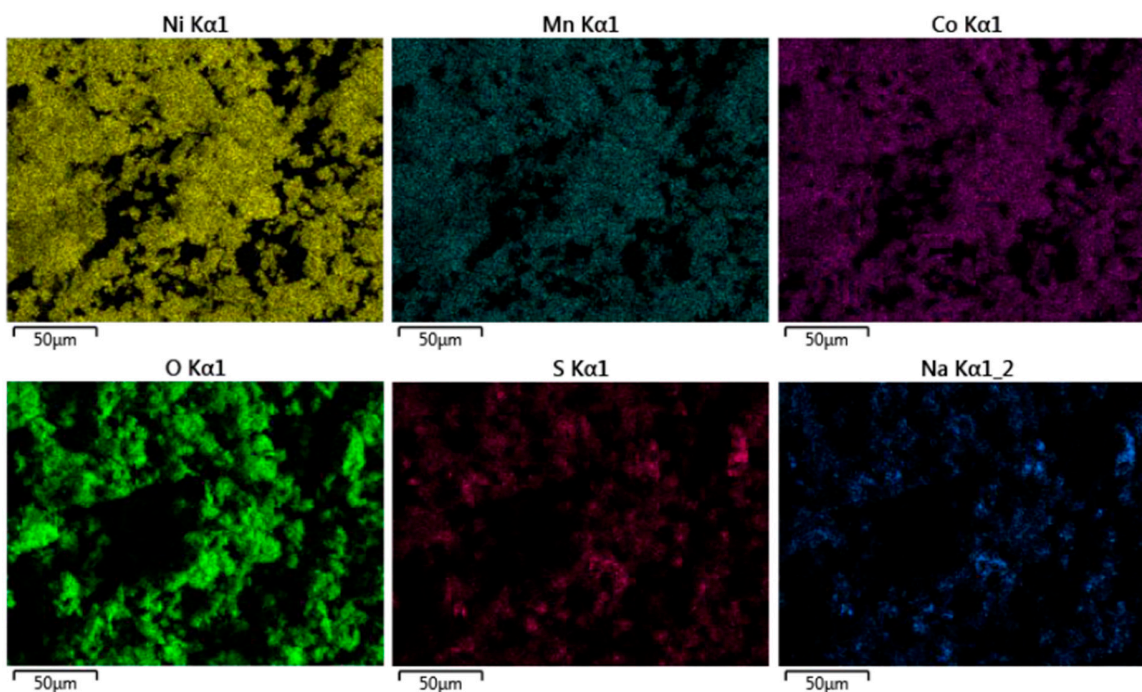


**Figure S2.** Rietveld analysis for SCS samples obtained in O<sub>2</sub> atmosphere (top), air atmosphere (middle), N<sub>2</sub> atmosphere (bottom).

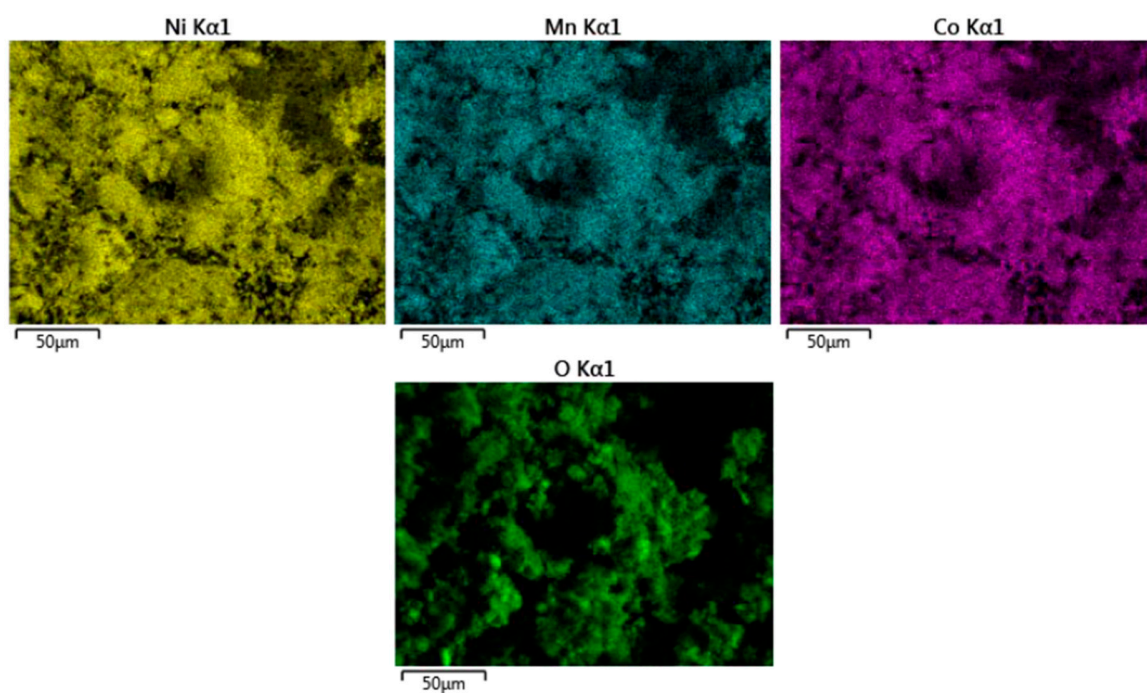
In Figure S3 the EDS map of SCS-O<sub>2</sub> is shown. Regarding the CPT-Air and SCS-Air samples, Figure S4 and Figure S5 are presented respectively. As for the CPT-N<sub>2</sub> and SCS-N<sub>2</sub>, Figure S6 and Figure S7 are presented, respectively.



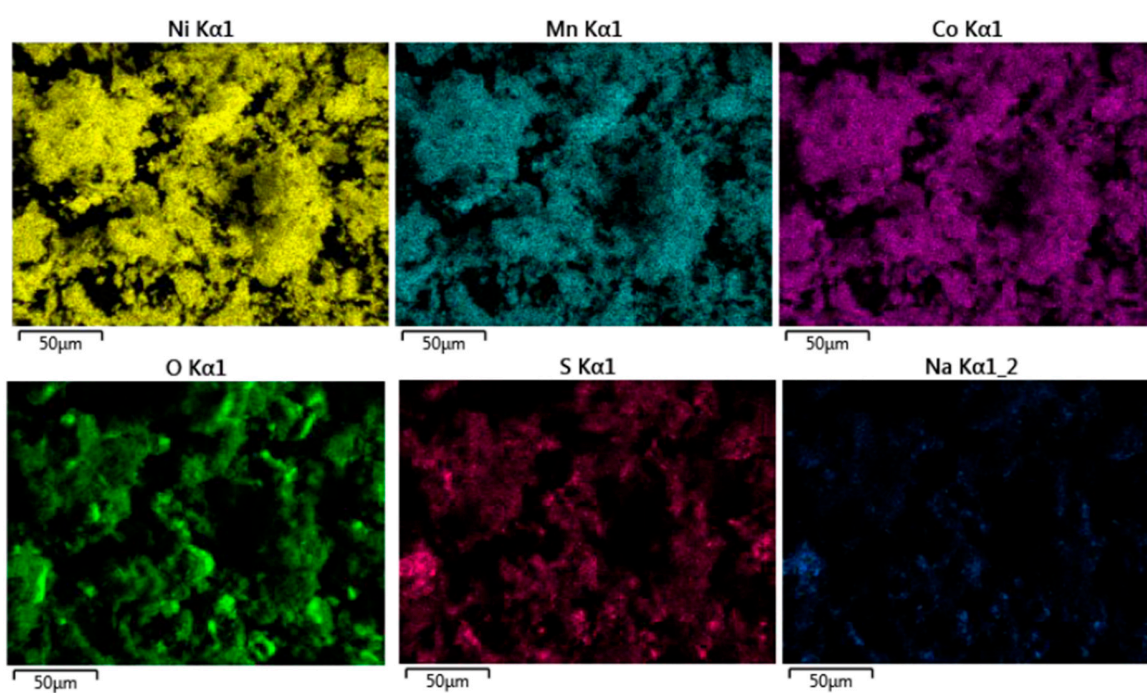
**Figure S3.** EDS map of SCS-O<sub>2</sub>.



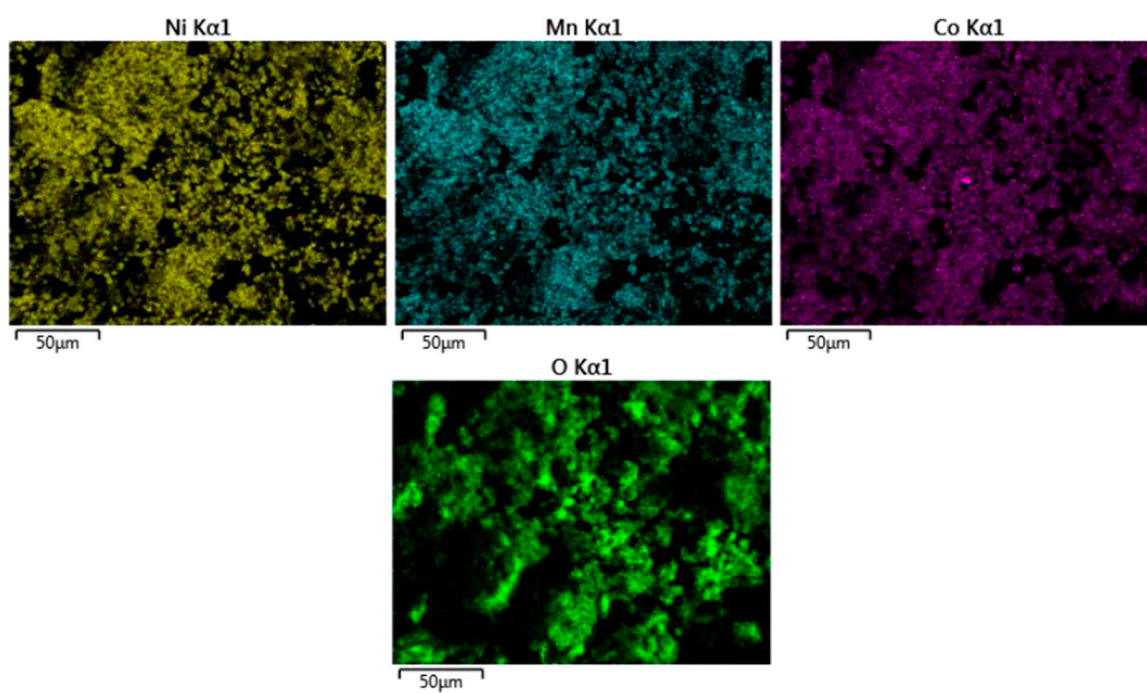
**Figure S4.** EDS map of CPT-Air.



**Figure S5.** EDS map of SCS-Air.



**Figure S6.** EDS map of CPT-N<sub>2</sub>.



**Figure S7.** EDS map of SCS-N<sub>2</sub>.