

Supplementary material

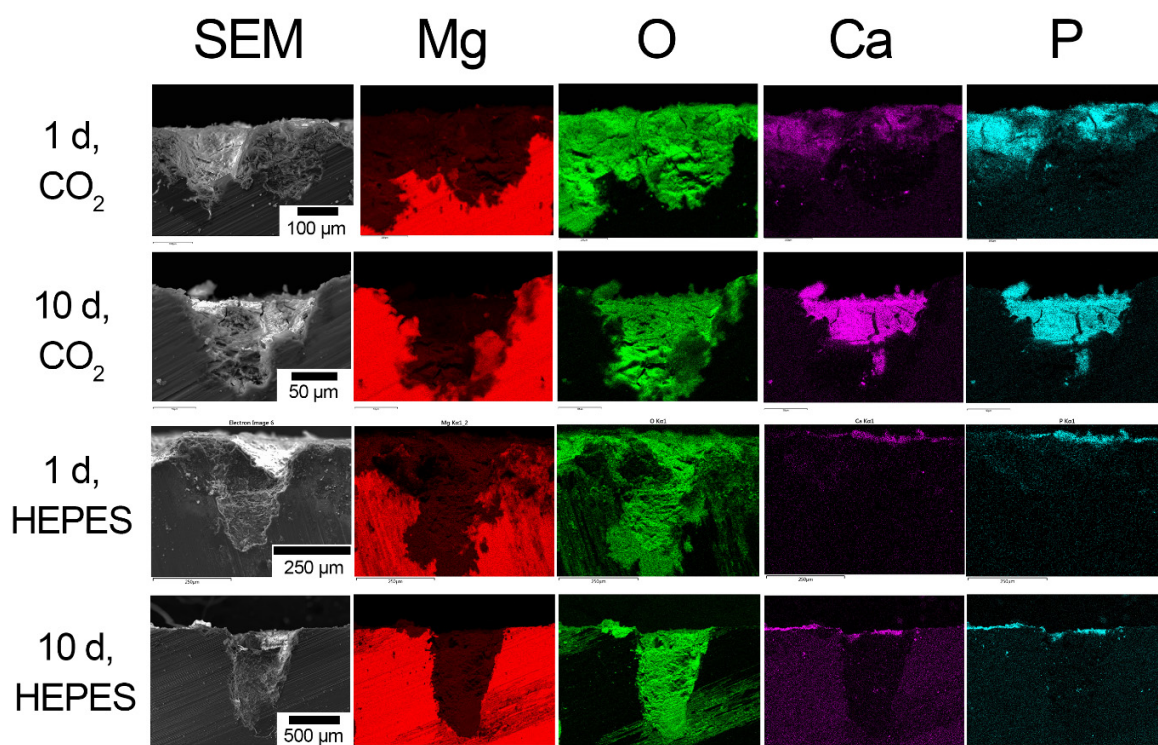


Figure S1: Scanning electron micrographs and corresponding elemental EDS maps taken from the transverse plane of R30 as a function of the buffer system and immersion time in EBSS.

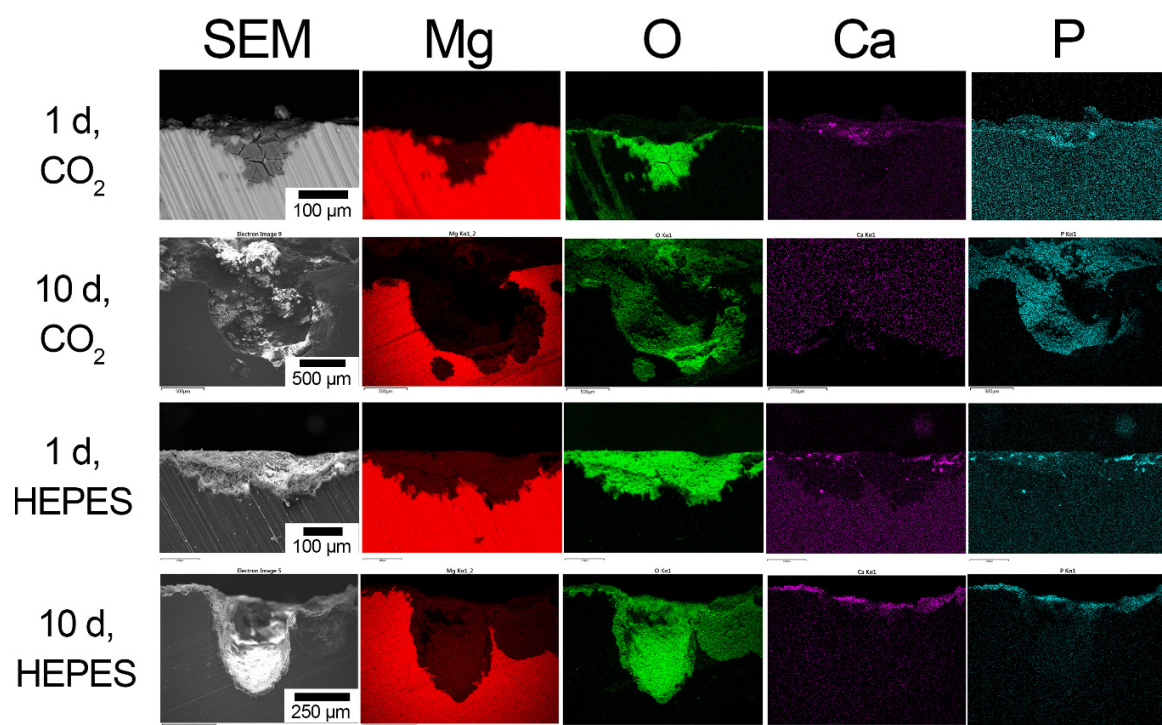


Figure S2: Scanning electron micrographs and corresponding elemental EDS maps taken from the transverse plane of R40 as a function of the buffer system and immersion time in EBSS.