

Article

Enzyme-Loaded Mesoporous Silica Particles with Tuning Wettability as a Pickering Catalyst for Enhancing Biocatalysis

Tao Meng, Ruixue Bai, Weihao Wang, Xin Yang, Ting Guo and Yaolei Wang *

School of Life Sciences and Engineering, Southwest Jiaotong University, Chengdu, Sichuan 610031, China; taomeng@swjtu.edu.cn (T.M.); bairuixue@calb-tech.com (R.B.); wangweihaowwh@163.com (W.W.); yangxin1239@163.com (X.Y.); tt-g-19@163.com (T.G.)

* Correspondence: wangbatistuta02@163.com; Tel.: +86-28-8760-3202

Received: 2 December 2018; Accepted: 9 January 2019; Published: 14 January 2019

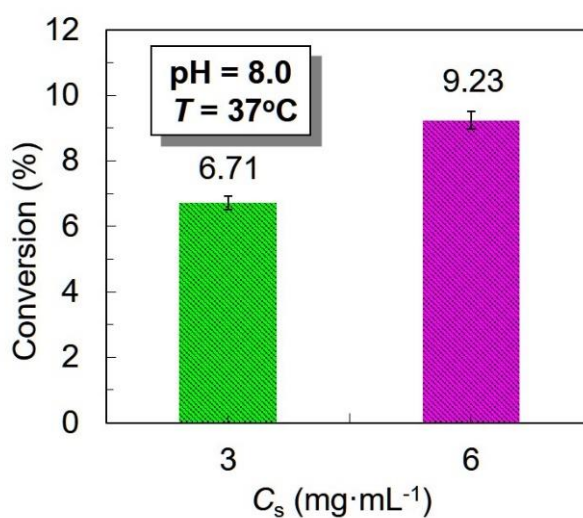


Figure S1. Effect of substrate concentration on the conversion with the free PCL.

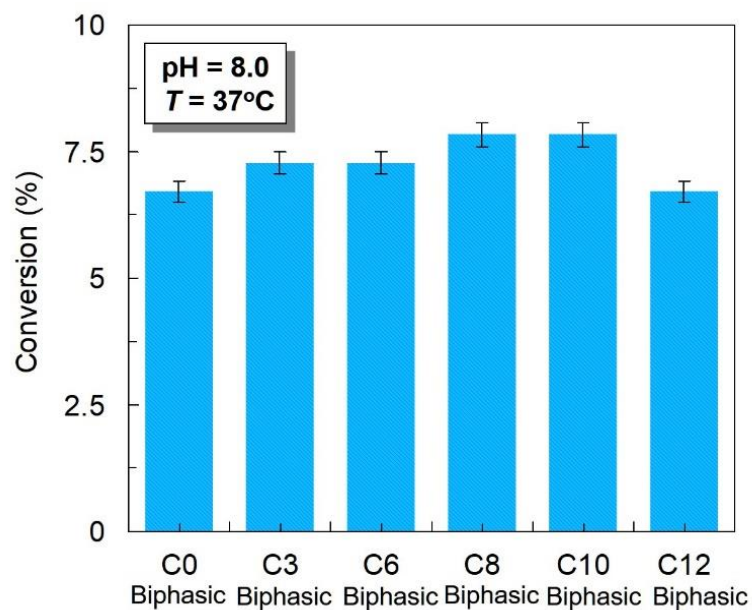


Figure S2. Effect of the chain length of silane grafted LMSPs on the conversion of enzymatic reaction catalyzed by the LMSPs_C0, LMSPs_C3, LMSPs_C6, LMSPs_C8, LMSPs_C10, LMSPs_C12 in the paraffin oil-water biphasic system.

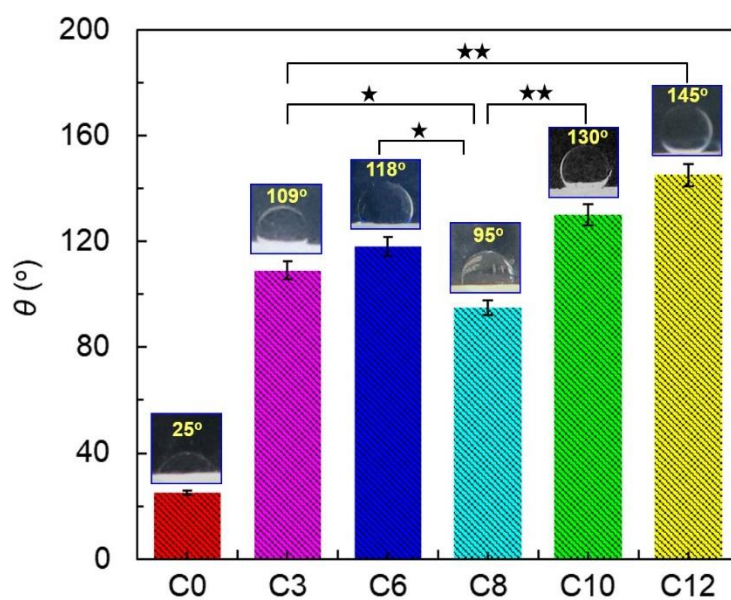


Figure S3. TCA of C0, C3, C6, C8, C10 and C12 modified LMSPs. One-way ANOVA and t-tests were used for statistical analysis. Asterisks indicate significant differences. * $P < 0.05$, ** $P < 0.01$.

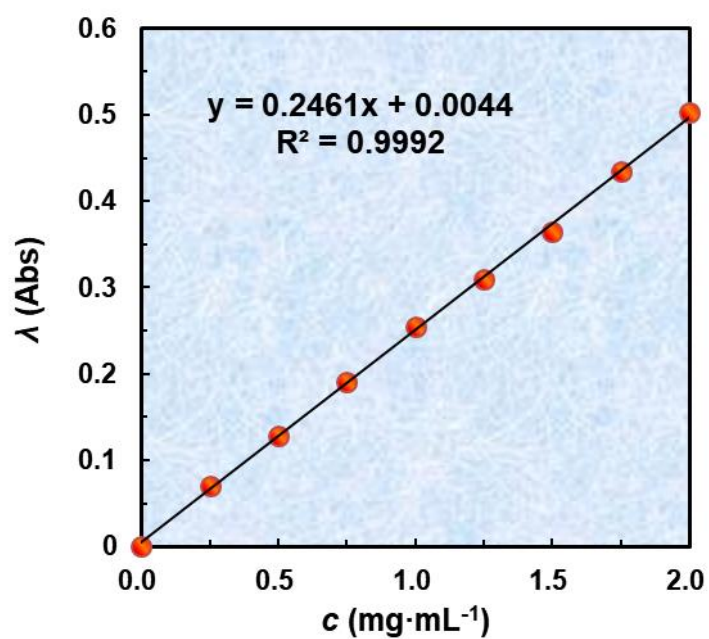


Figure S4 Standard curve of the absorbance of PCL at 205 nm.



© 2018 by the authors. Submitted for possible open access publication under the terms and conditions of the Creative Commons Attribution (CC BY) license (<http://creativecommons.org/licenses/by/4.0/>).