

Supplementary Information

Zinc oxide-graphene nanocomposite-based sensor for the electrochemical determination of cetirizine

Rakesh R. Sawkar¹, Mahesh M. Shanbhag², Suresh M. Tuwar^{1,*}, Kunal Mondal^{3,4*}, Nagaraj P. Shetti^{5,6*}

Figures:

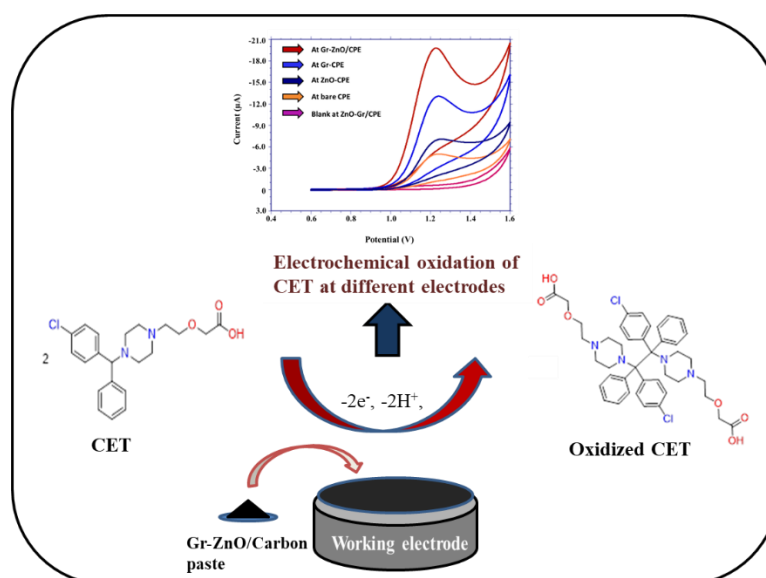


Figure S1. Graphical abstract of electrochemical oxidation of CET at ZnO-Gr/CPE.

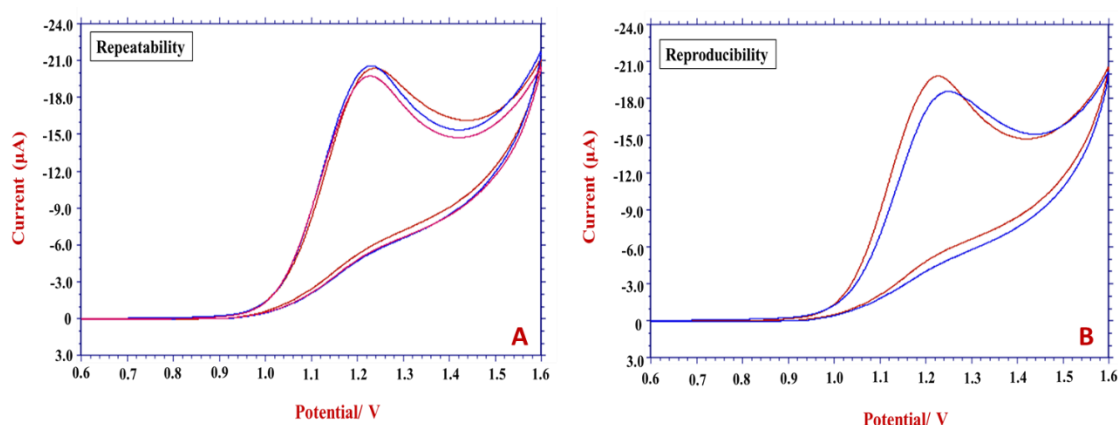


Figure S2. (A) Repeatability of ZnO-Gr/CPE, (B) Reproducibility of ZnO-Gr/CPE.

Tables:

Table S1. EDS of ZnO-Gr/CPE.

Element	Mass %	Atom %
C	80.89 ± 0.17	85.62 ± 0.18
O	17.77 ± 0.32	14.12 ± 0.25
Zn	1.34 ± 0.09	0.26 ± 0.02