

## *Supporting Information*

# **Uniform Distribution of Pd on GO-C Catalysts for Enhancing the Performance of Air-Cathode Microbial Fuel Cell**

Jingzhen Wang <sup>1,2</sup>, Kaijie Mu <sup>2</sup>, Xuedong Zhao <sup>2</sup>, Dianliang Luo <sup>2</sup>, Xiaodi Yu <sup>2</sup>, Wenpeng Li <sup>3,4,\*</sup>, Jie Chu <sup>5</sup>, Jing Yang <sup>6,\*</sup> and Qinzhen Yang <sup>1,2,\*</sup>

<sup>1</sup> State Key Laboratory of Biobased Material and Green Papermaking, Qilu University of Technology, Shandong Academy of Sciences, Jinan 250353, China; wjz\_424@163.com

<sup>2</sup> Department of Bioengineering, Qilu University of Technology, Shandong Academy of Sciences, Jinan 250353, China; mukaijie@126.com (K.M.); zhaosimon666@yeah.net (X.Z.); luodianliangdl@163.com (D.L.); xiaodiyu1996@126.com (X.Y.)

<sup>3</sup> Engineering & Technology Center of Electrochemistry, School of Chemistry and Chemical Engineering, Qilu University of Technology, Shandong Academy of Sciences, Jinan 250353, China

<sup>4</sup> Shandong Key Laboratory of Biochemical Analysis, College of Chemistry and Molecular Engineering, Qingdao University of Science and Technology, Qingdao 266042, China

<sup>5</sup> Biology Institute, Qilu University of Technology, Shandong Academy of Sciences, Jinan 250103, China; chujie6532@163.com

<sup>6</sup> Department of Physics, School of Electronic and Information Engineering, Qilu University of Technology, Shandong Academy of Sciences, Jinan 250353, China

\* Correspondence: liwenpeng@qlu.edu.cn (W.L.); yangjing@qlu.edu.cn (J.Y.); yqz@qlu.edu.cn (Q.Y.)

## **Material and Methods**

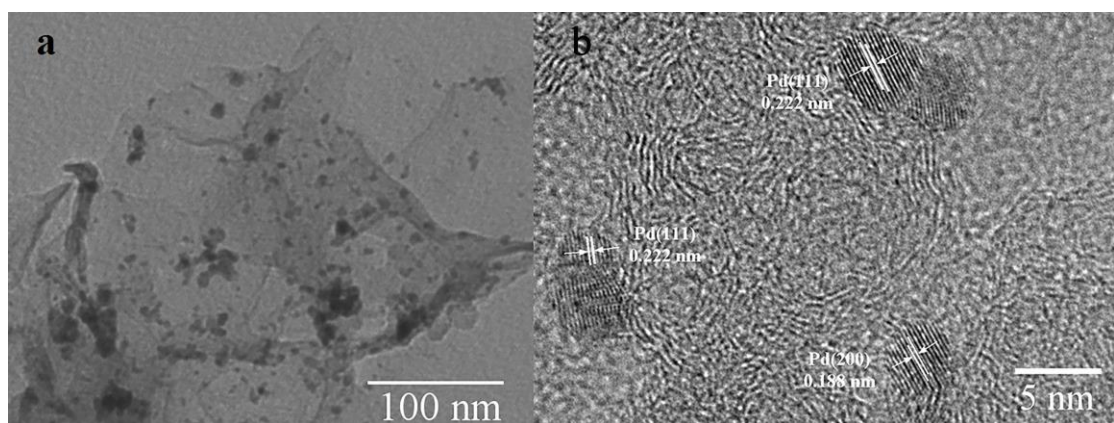
### **S1. Characterization of Pd/GO-C cathode catalyst**

The morphology of sample was assessed by transmission electron microscopy (TEM; JEOL JEM-2100) at 200 kV accelerating voltage. High-resolution transmission electron microscopy (HR-TEM) was carried out with a JEOL JEM-2100.

## **Figure legends**

The images show that the lattice fringe spacing is 0.222 and 0.188 nm, corresponding to the (111) and (200) of PD, respectively.

Supplementary file



**Figure S1.** TEM (a) and HR-TEM (b) images of Pd/GO-C cathode catalyst.