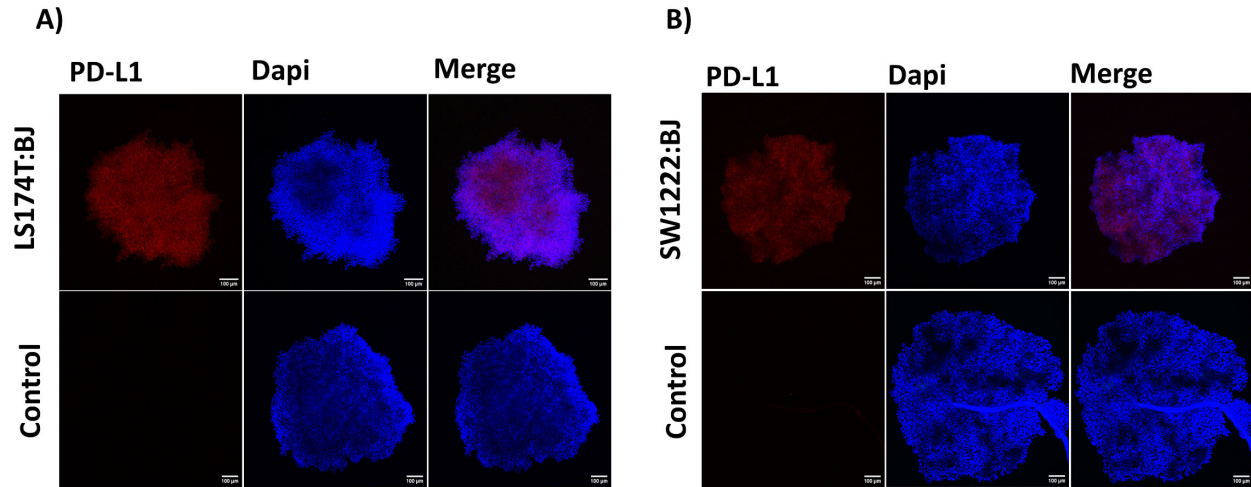


# Supplementary Material



**Figure S1.** Co-culture tumor spheroids were stained with PD-L1 antibodies and imaged in a confocal microscope at x10 magnification. Isotype controls of the antibodies are shown directly beneath the measured sample spheroids. A) Images represent LS174T:BJ co-culture tumor spheroids stained for PD-L1 (red). An even dispersion of PD-L1 expression can be seen across the surface of the measured tumor spheroids B) Images represent SW1222:BJ co-culture tumor spheroids stained for PD-L1 (red). An even dispersion of PD-L1 expression can be seen across the surface of the measured tumor spheroids.