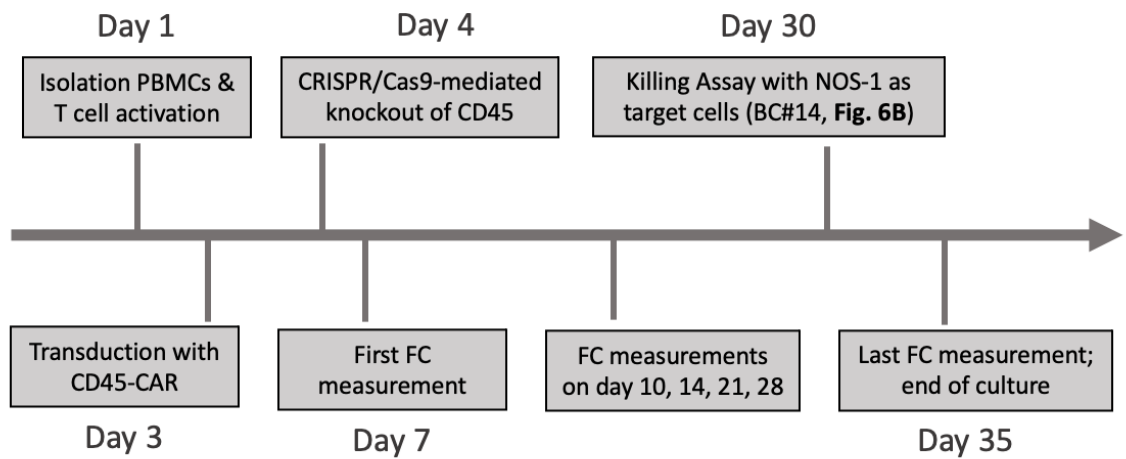
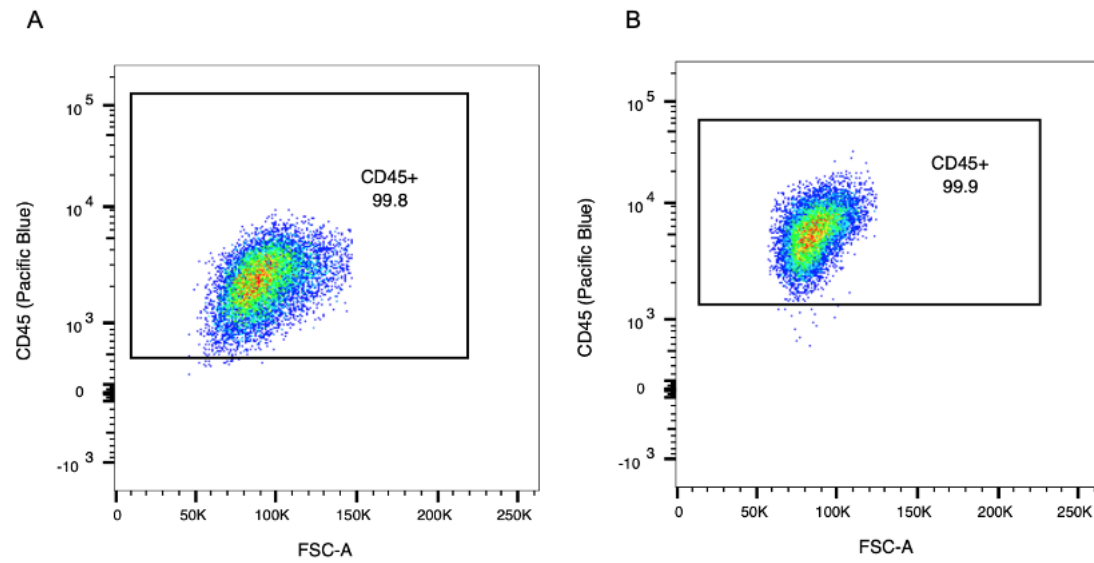


Supplementary Figures & Table



Suppl. Figure S1: Timeline of the experiment with BC#13-#15, CD45^{ko}/CD45CAR-T cells produced following protocol P1.



Suppl. Figure S2: Homogenous CD45 expression in (A) Ramos-GFP+ and (B) NOS-1-GFP+ cells. Cells were stained with VioBlue-labelled CD45 antibodies and analyzed by FC.

Suppl. Table S1: Comparison of cell outcomes at day 12 of protocols 1 & 2 for BC#6 (small-scale)

	Cell No [$\times 10^6$]	CAR ⁺ [%]	CD45 ^{ko} [%]	CD45 ^{ko} /CD45-CAR [$\times 10^6$]
P1: Transduction → knockout	1.3	15.6	96.8	0.20
P2: Knockout → transduction	0.95	33.2	66.0	0.21