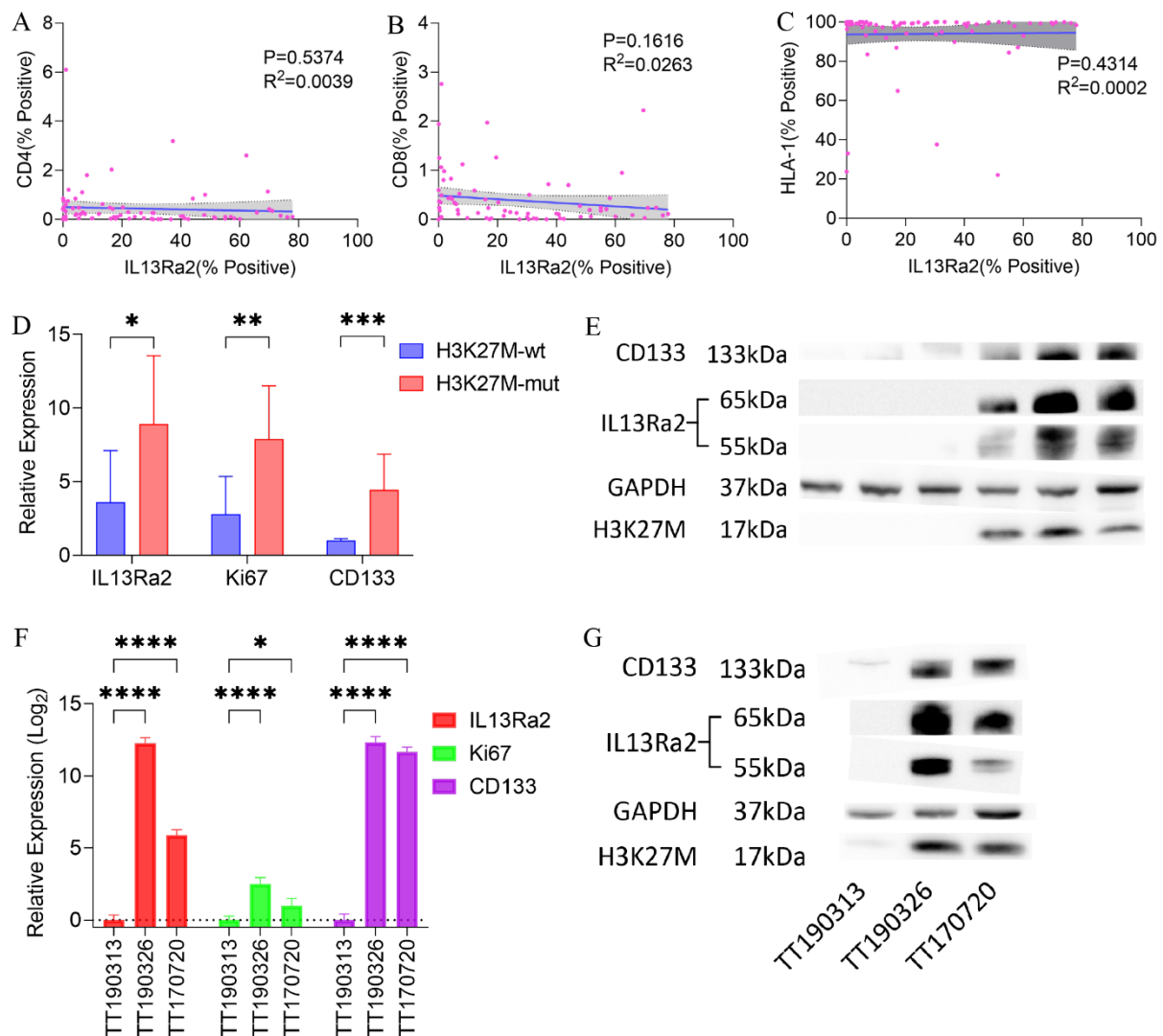


**Figure S1** The workflow of this study





**Figure S2** Co-staining results in the TMA cohort & Western blot and qPCR results of BSG tumor tissues and cells. Linear regression results of IL13Ra2 staining extent and CD4(A), CD8(B), HLA1(C) staining extent in TMA queue; qPCR(D) and Western blot (E) results of BSG tumor tissues; qPCR(F) and Western blot (G) results of BSG cells.