

## **Supplementary File S1: Remarks on the original WB blot.**

### **1. On the molecular weight marker:**

When performing western-blot, we were using PageRuler Prestained Protein Ladder from ThermoFisher (Cat\_No.: 26616) as protein size standard. All the signal of western-blot were captured through traditional X-ray film exposure. So, the protein molecular weight marker, which did not have chemiluminescence property by itself, could not be visualized on the X-ray film. Protein molecular weight markers were marked on the X-ray film by hand (by overlapping the exposed X-ray film onto the original membrane, and mark down the position of the ladder). In this supplementary file, the hand-marked ladder positions were high lighted with **red solid-line rectangles**.

2. The bands shown in the manuscript were high-lighted with **dashed-line red rectangles**.

### **3. On the “full blot” requirement:**

**During the western blot process, blots were already trimmed to appropriate size for the target protein.** Therefore, the WB pictures inside the WB supplementary file represent the original western blot result of the full-blot.

Fig 1B

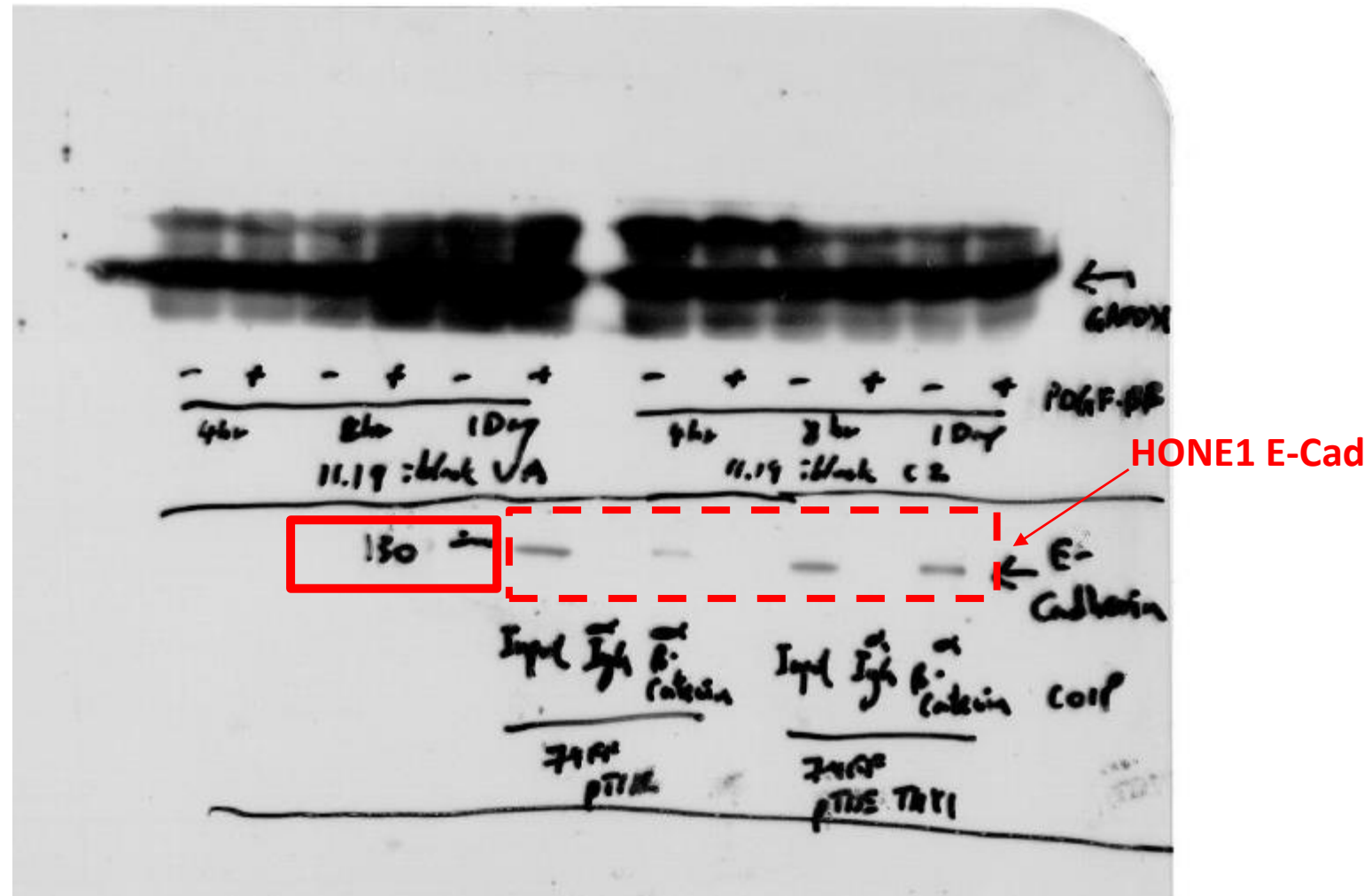
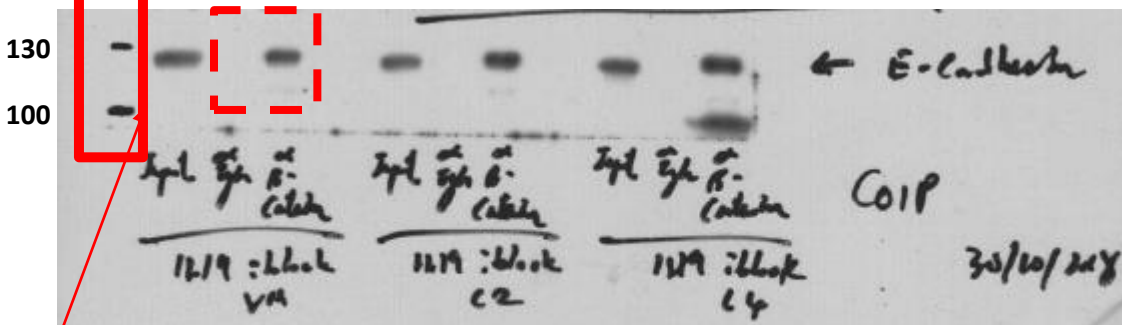
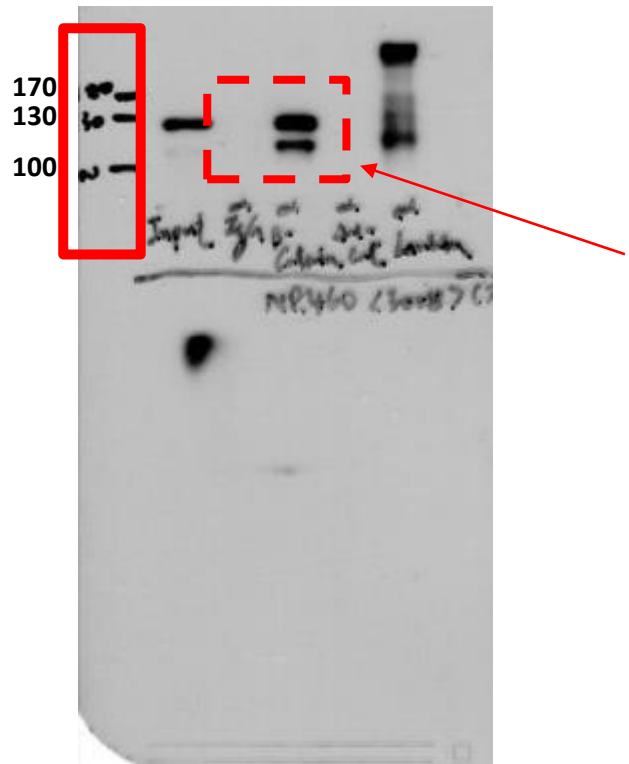


Fig 1B



11.19 E-Cad

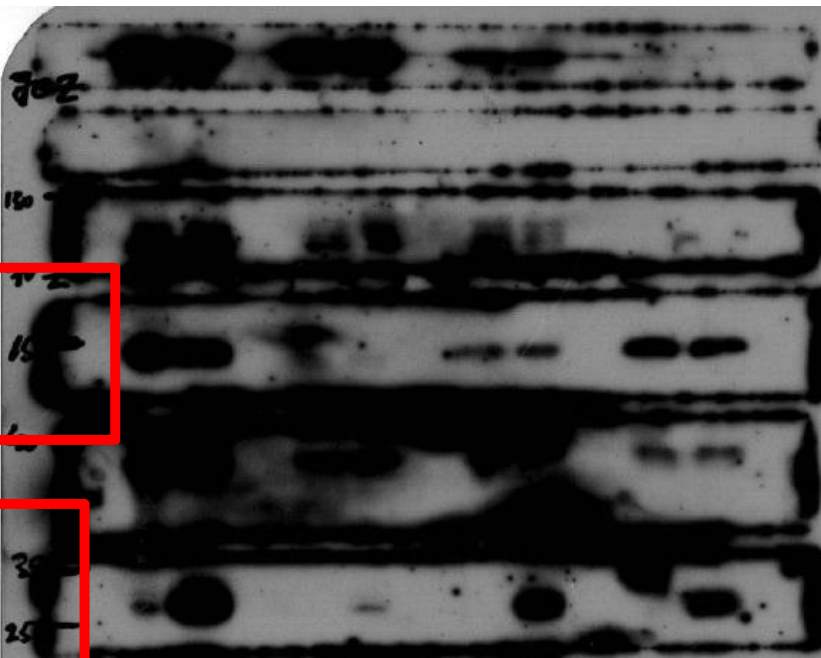
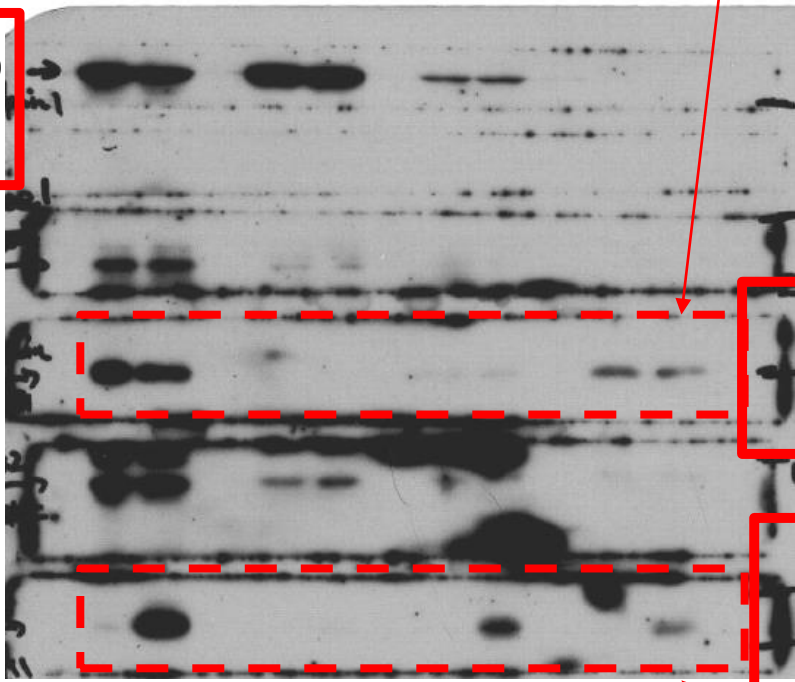
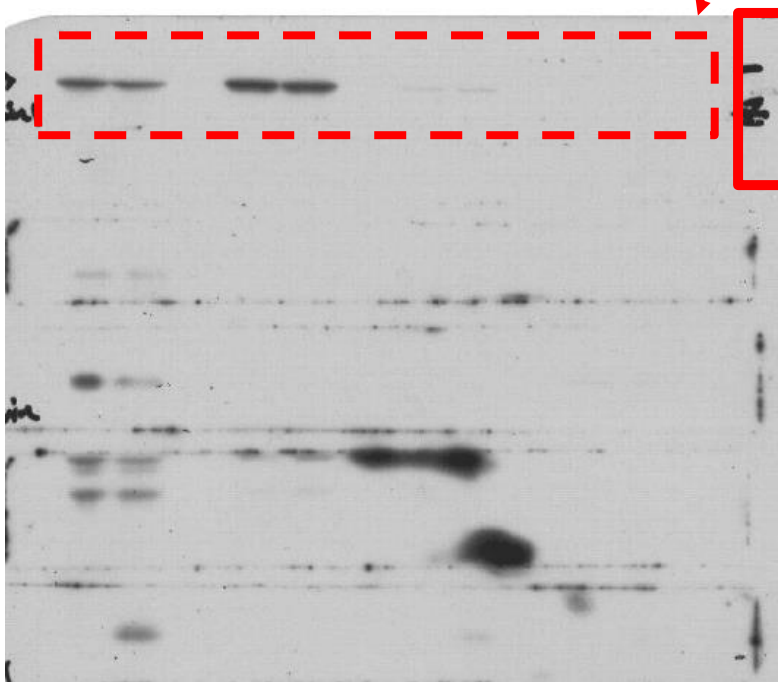


NP460 E-Cad

Fig 1C

Calpain 1

Survivin



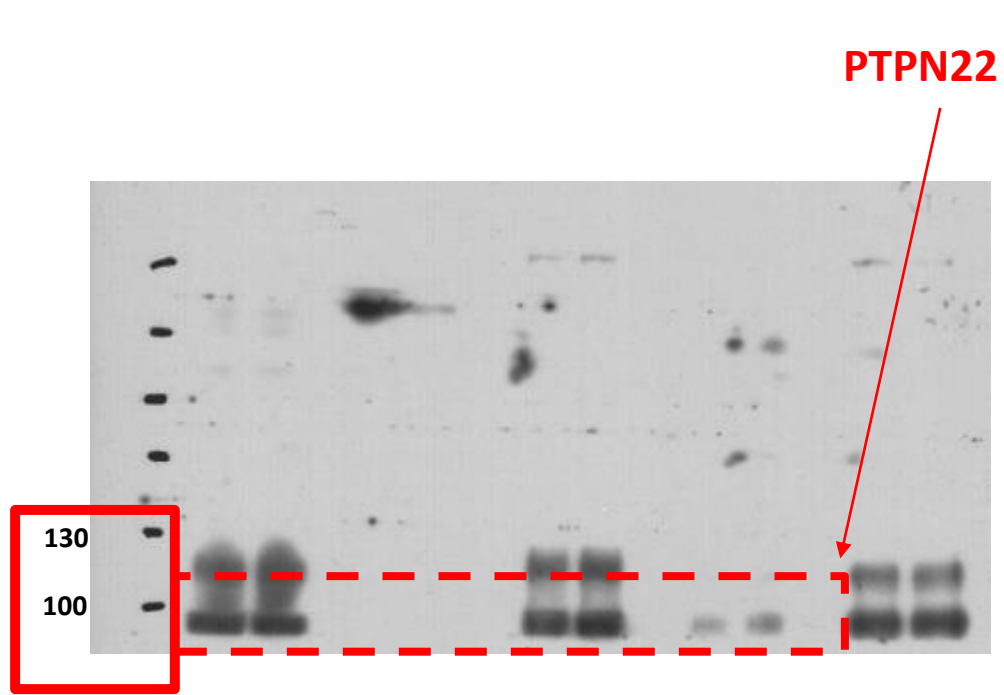
Short exposure

Long exposure x1

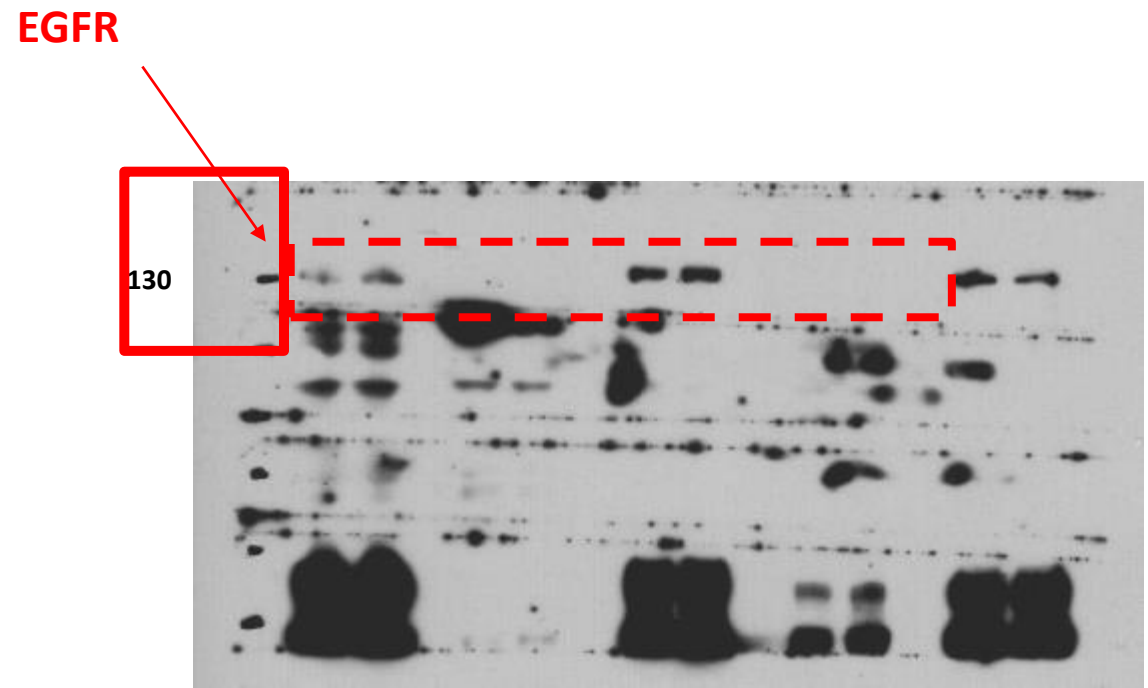
Long exposure x2

THY1

Fig 1C



Short exposure



Long exposure x1

Fig 1F

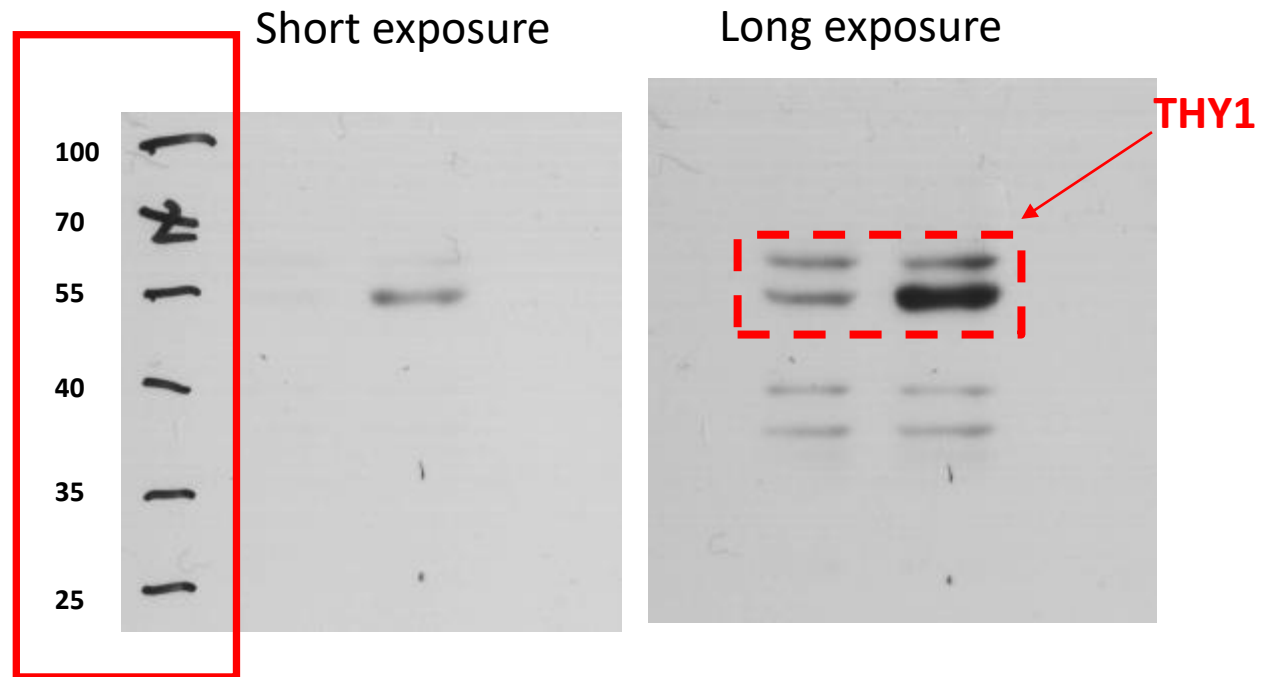
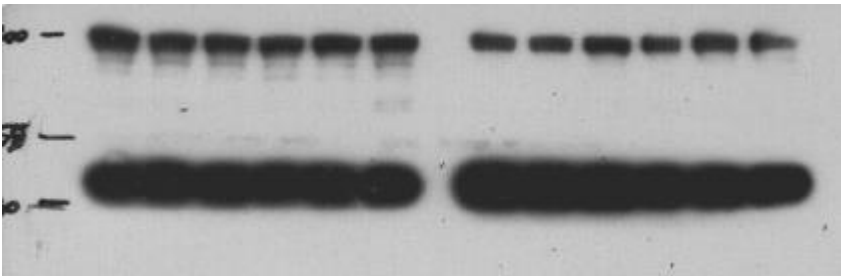
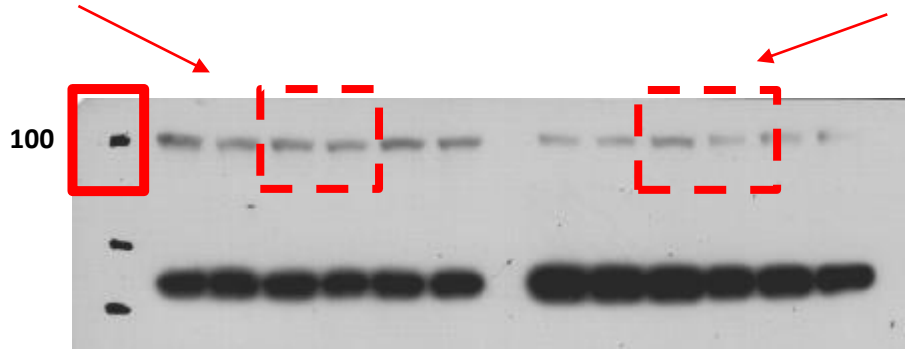


Fig 2B

Cytoplasmic B-catenin

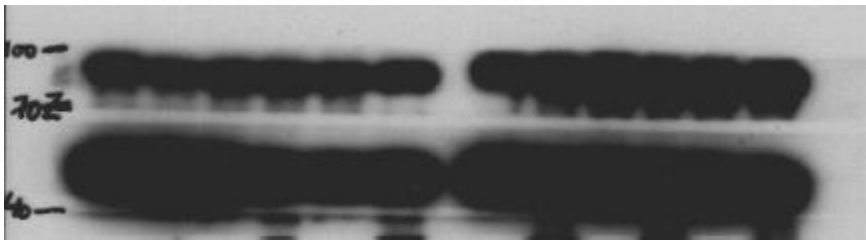
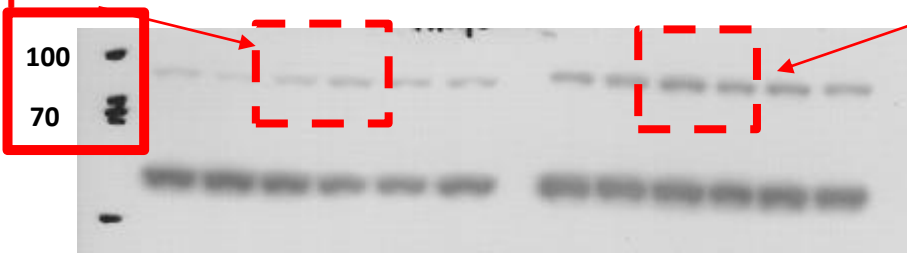
Nuclear B-catenin



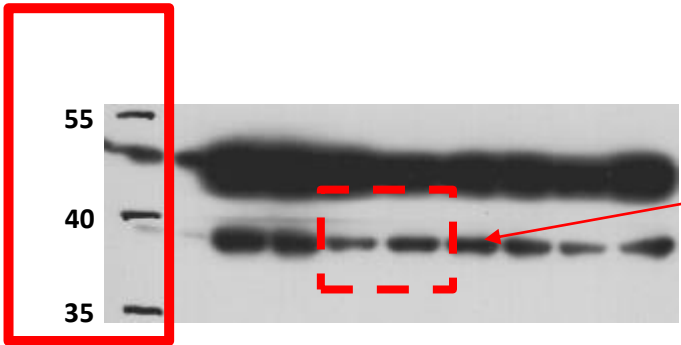
2017-10-31

Cytoplasmic p84

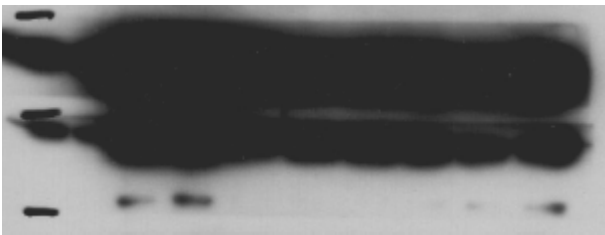
Nuclear p84



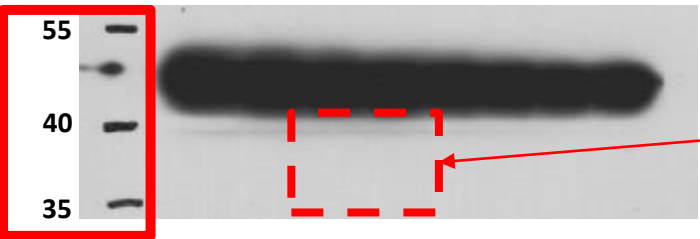
2017-10-27



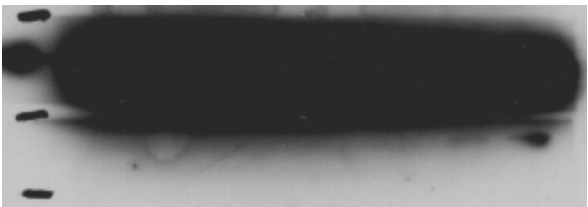
Cytoplasmic GAPDH



2017-11-07



Nuclear GAPDH



Short exposure

Long exposure

Fig 2C

HONE1

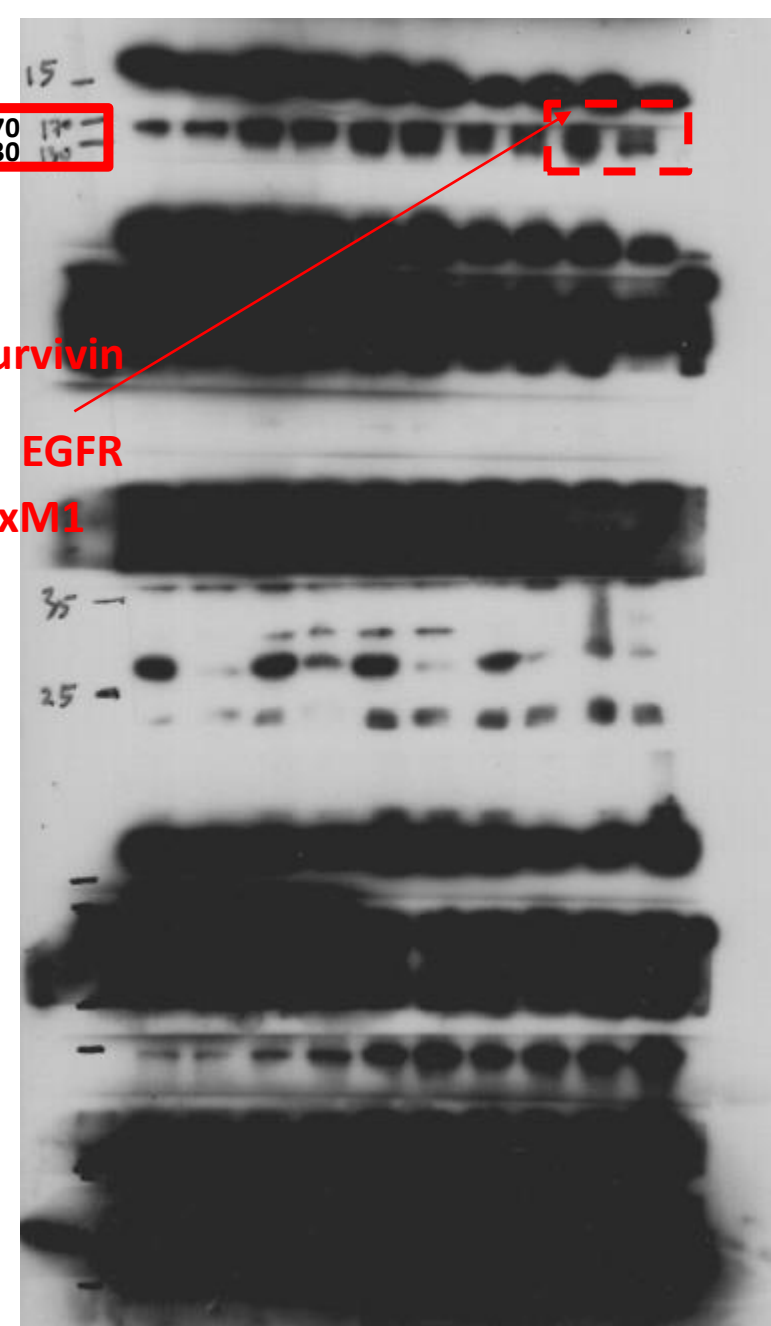
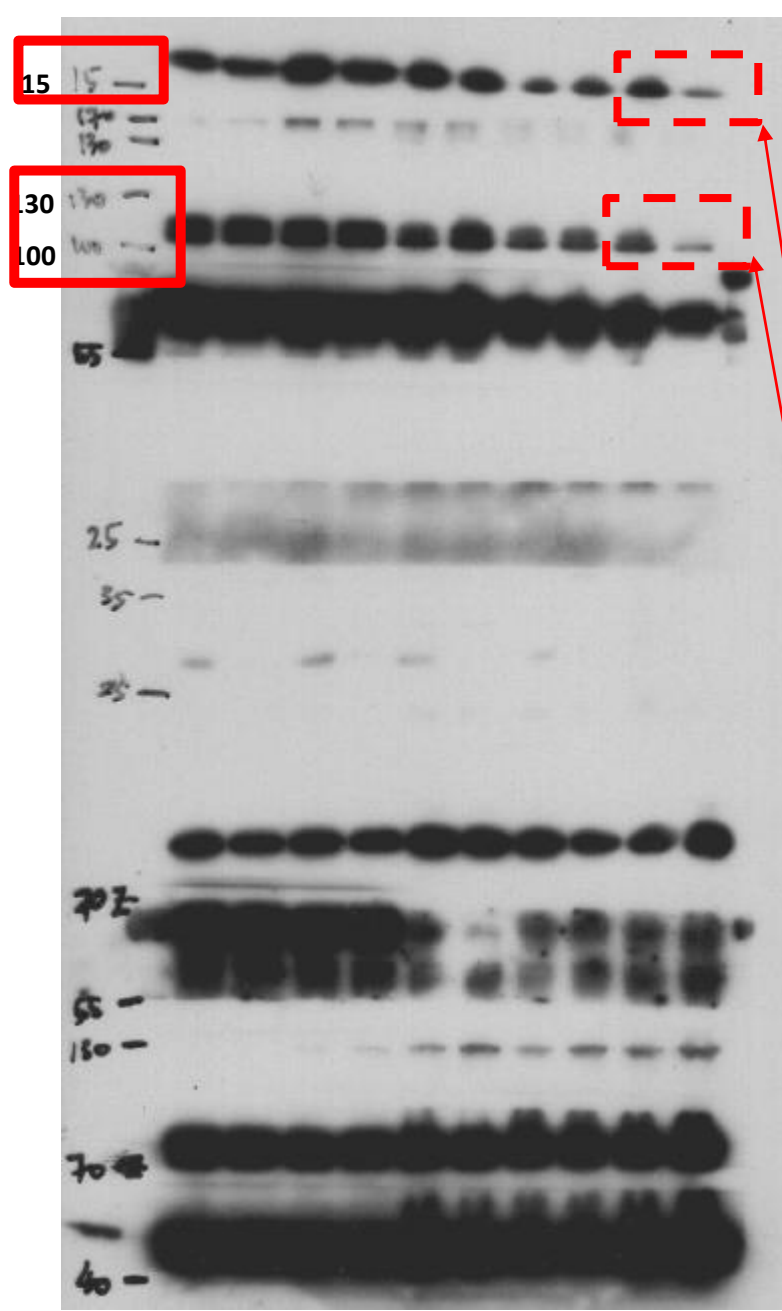
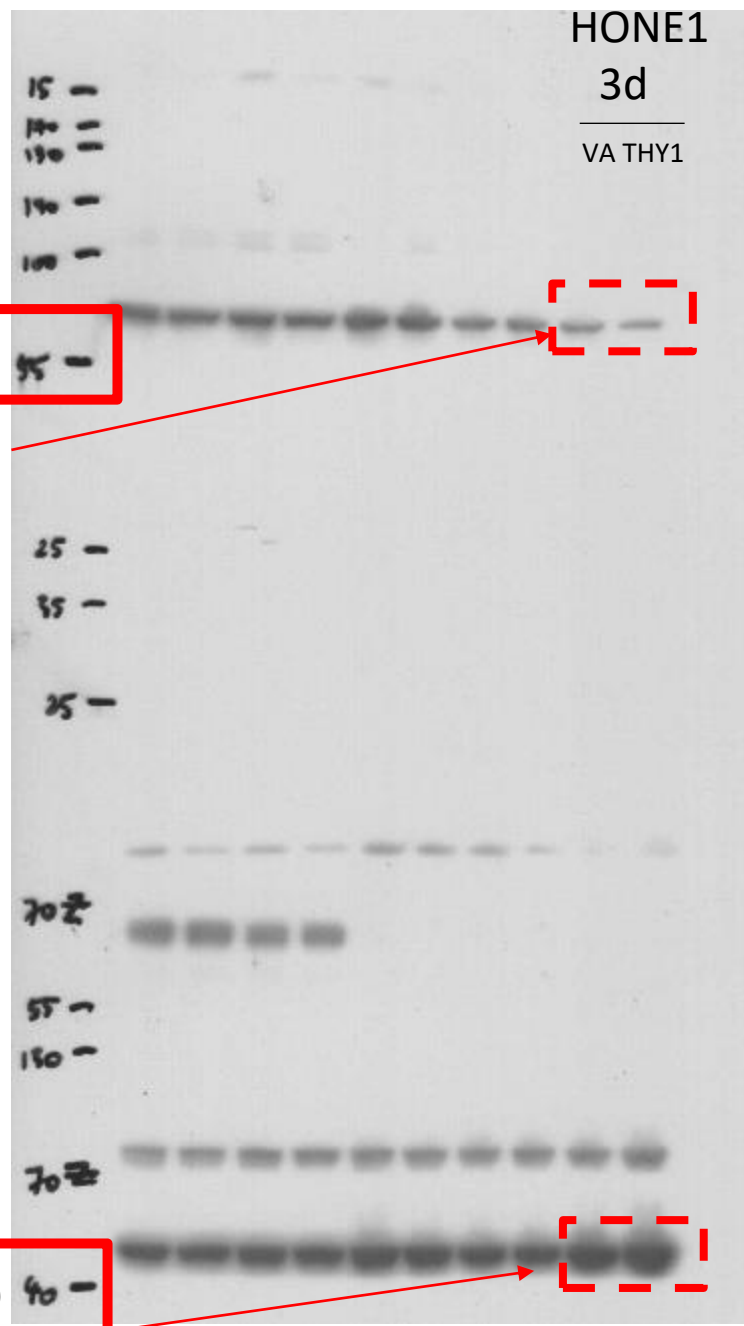
Vimentin

B-actin

Short exposure

Long exposure x1

Long exposure x2



Survivin

EGFR

FoxM1



Fig 2C

NPC43

NPC43

3d

VA THY1

EGFR

Survivin

170  
130

25

130  
100

70  
55

FoxM1

Vimentin

40

B-actin

Short exposure

Long exposure x1

Long exposure x2

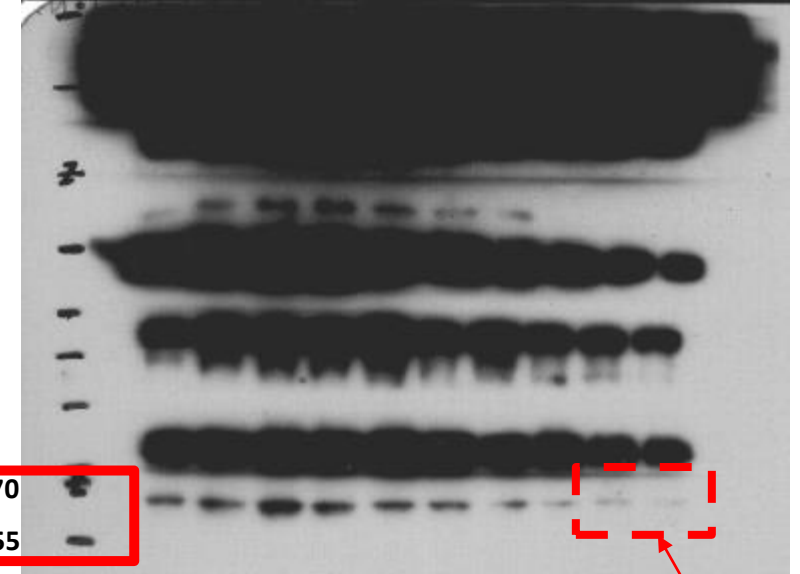
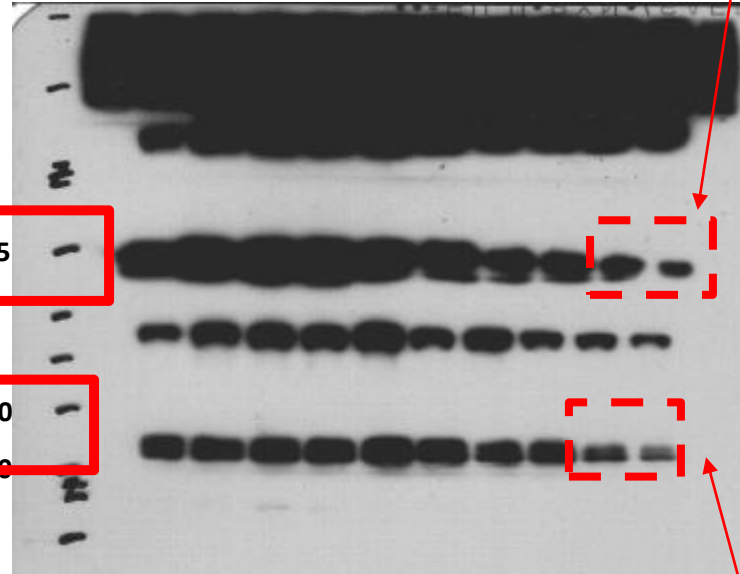
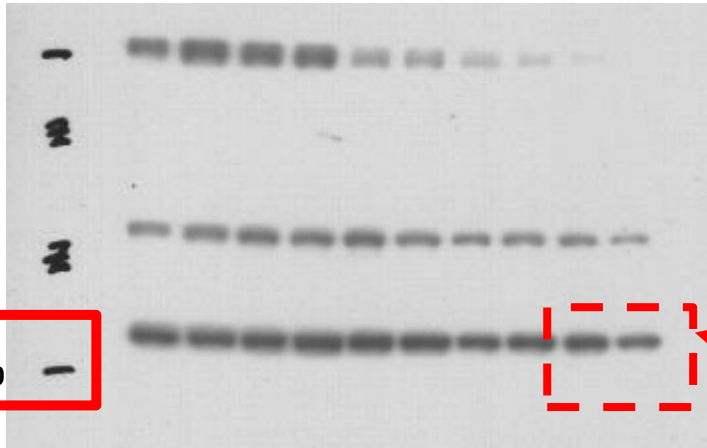
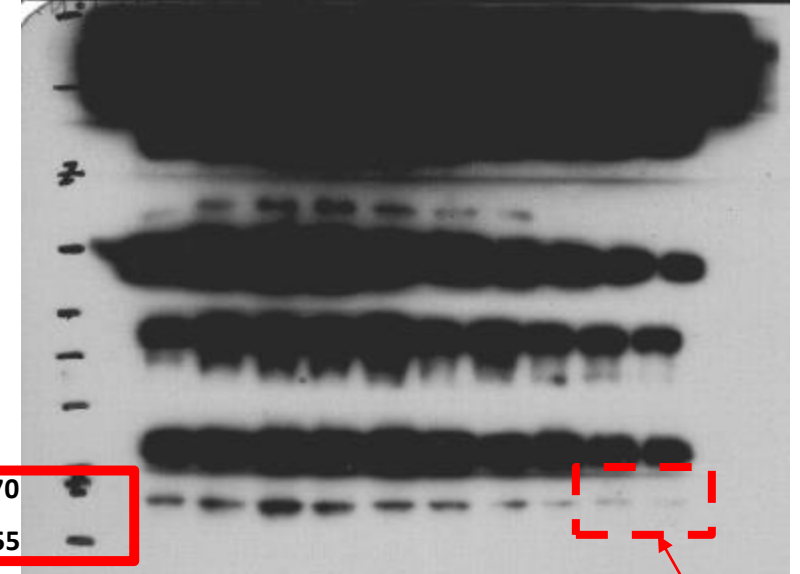
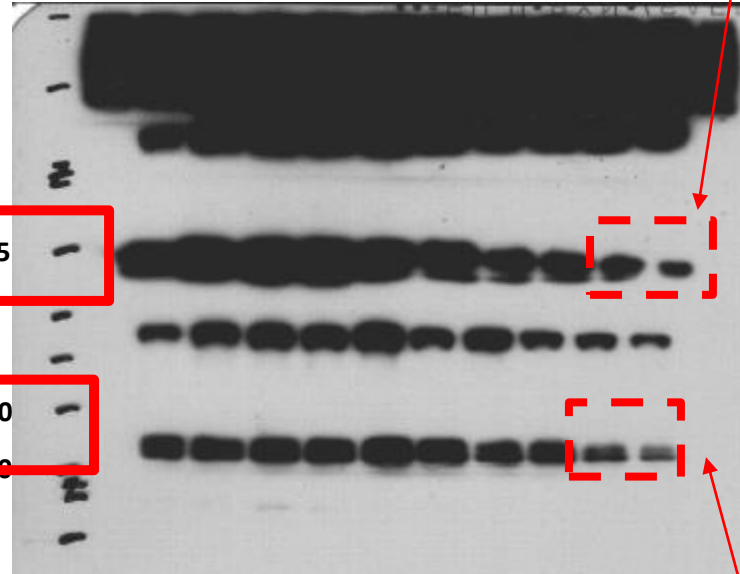
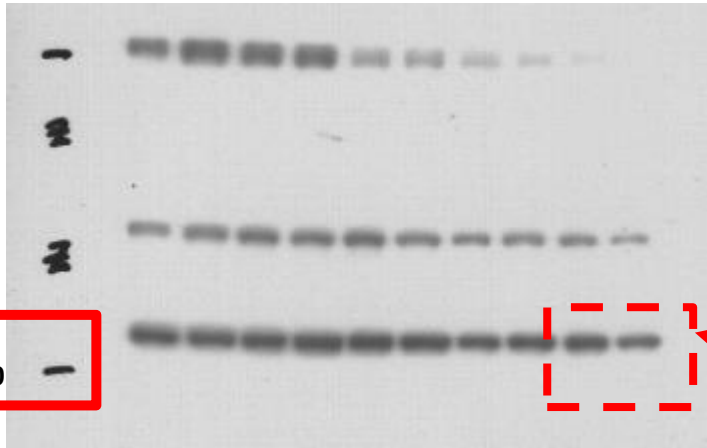
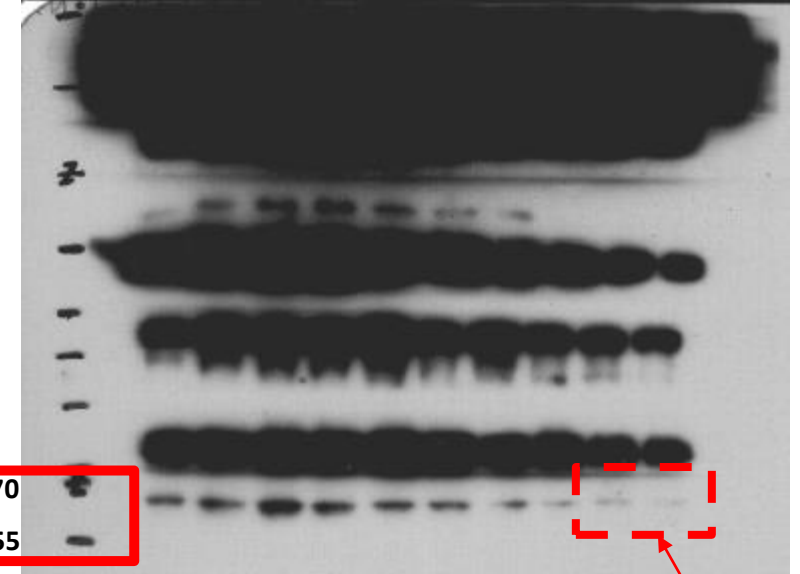
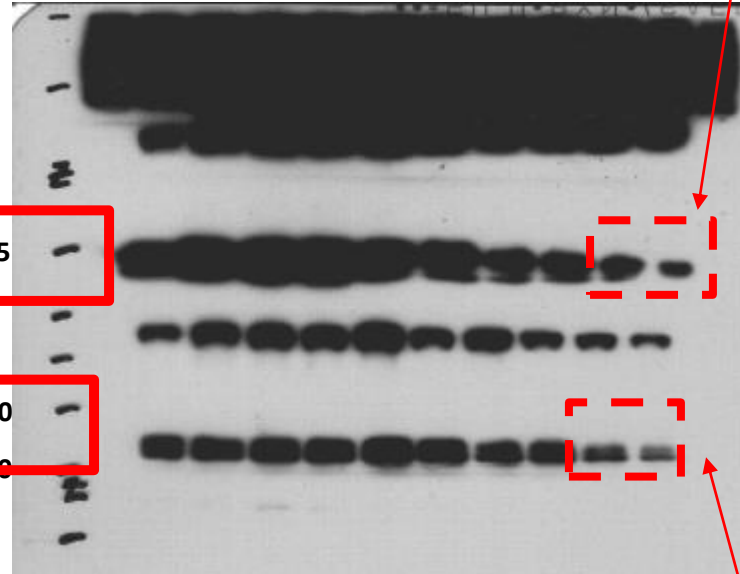
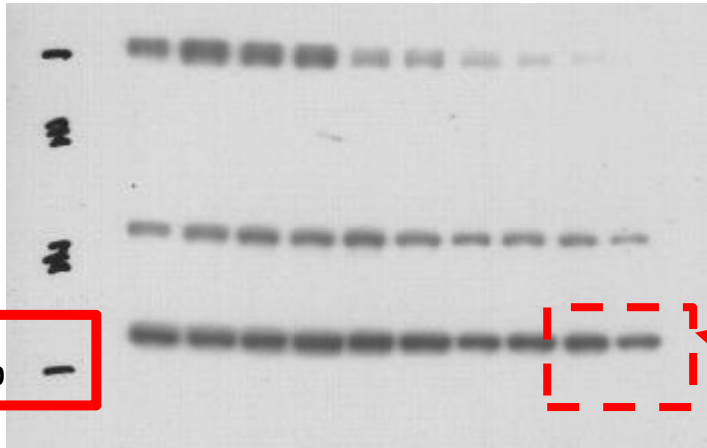
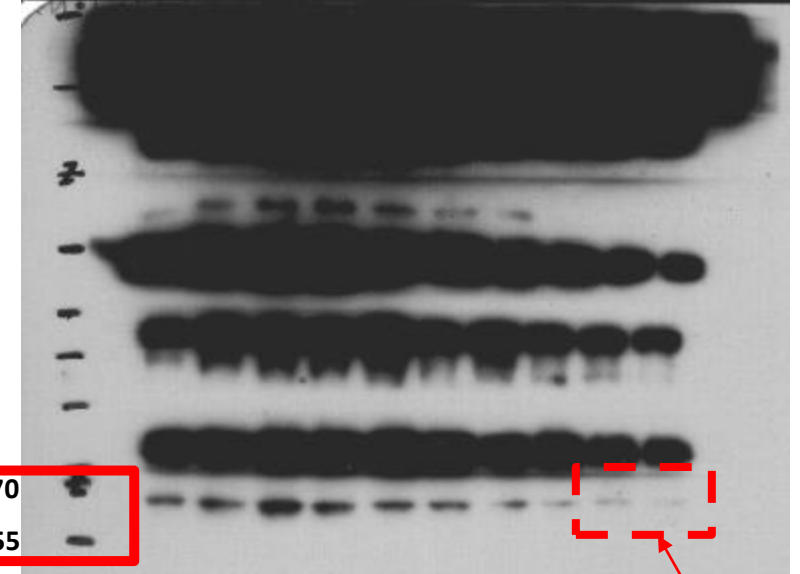
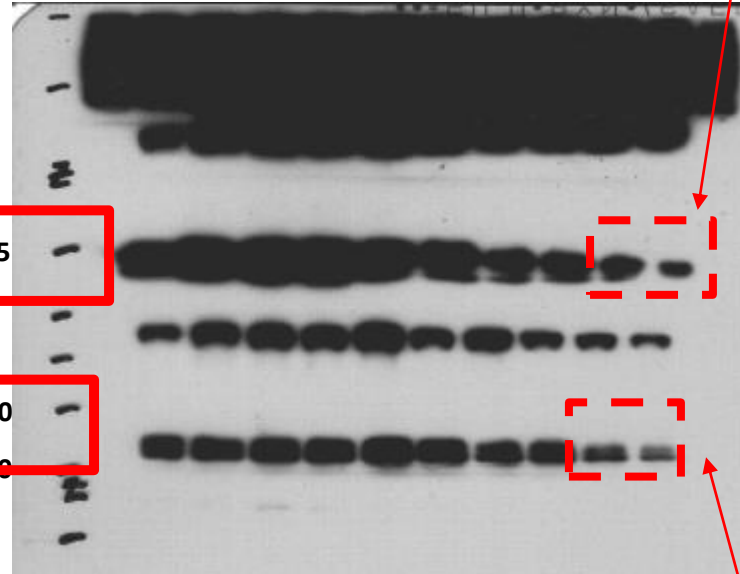
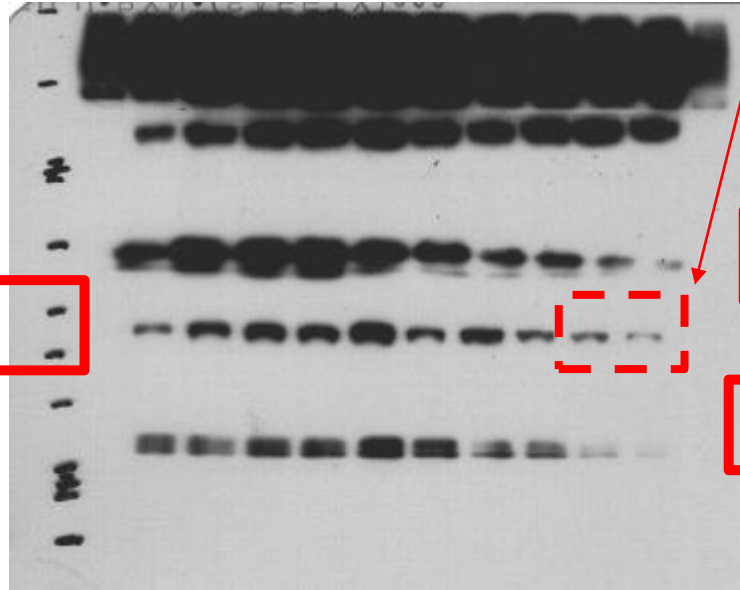
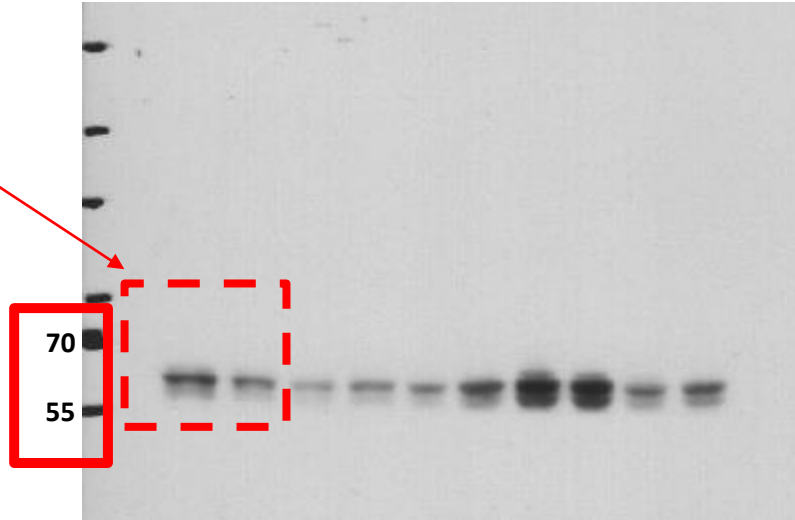


Fig 3A

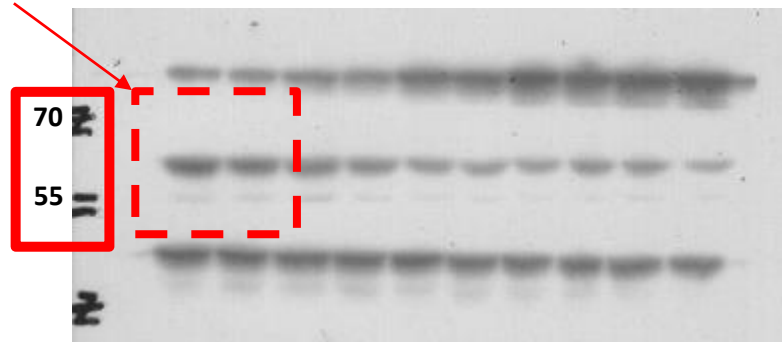
HONE1

VA    THY1

pSRC

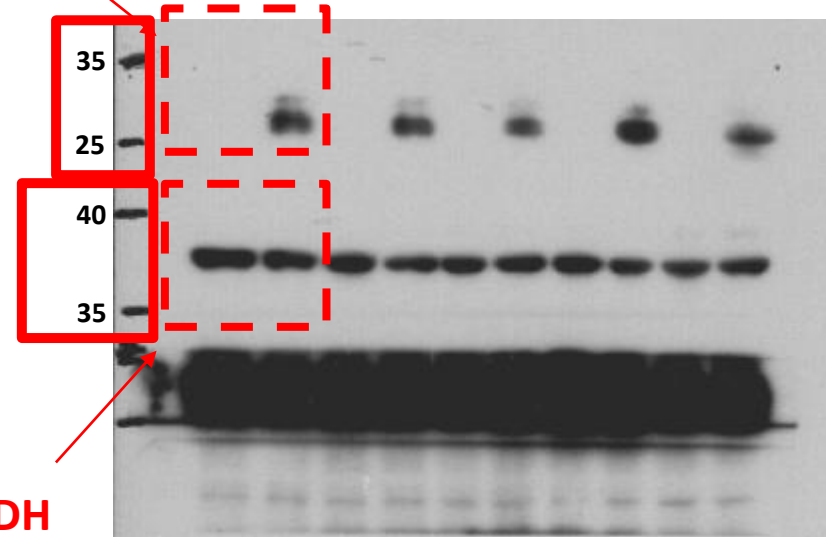


SRC

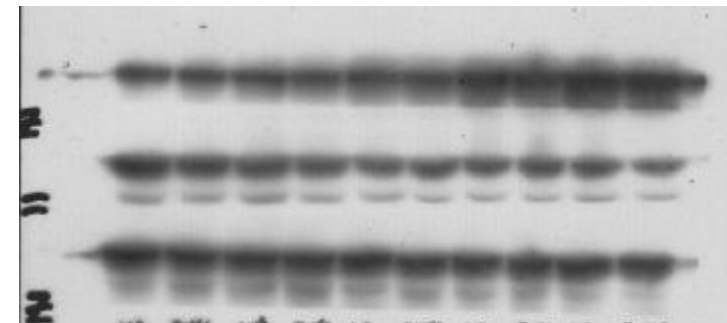


Short exposure

THY1



GAPDH



Long exposure

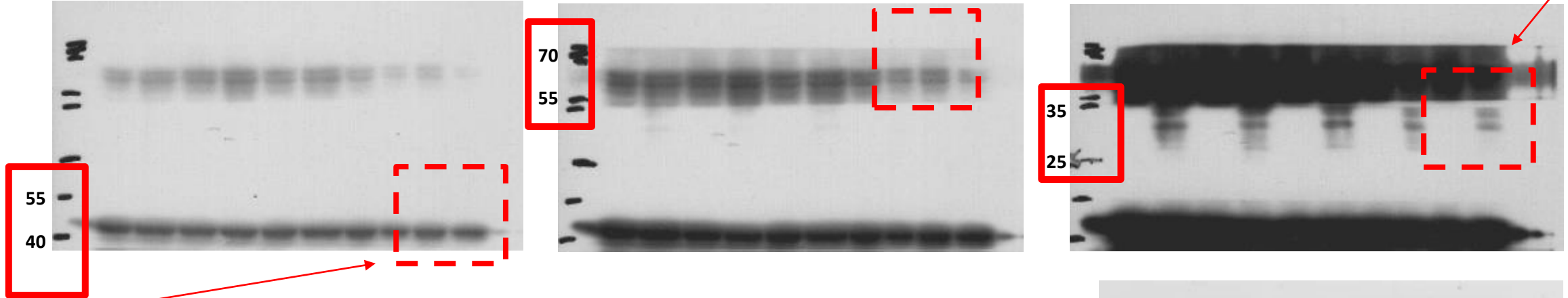
Fig 3A

NPC43

VA THY1

pSRC

THY1



B-actin

SRC

Short exposure

Long exposure x1

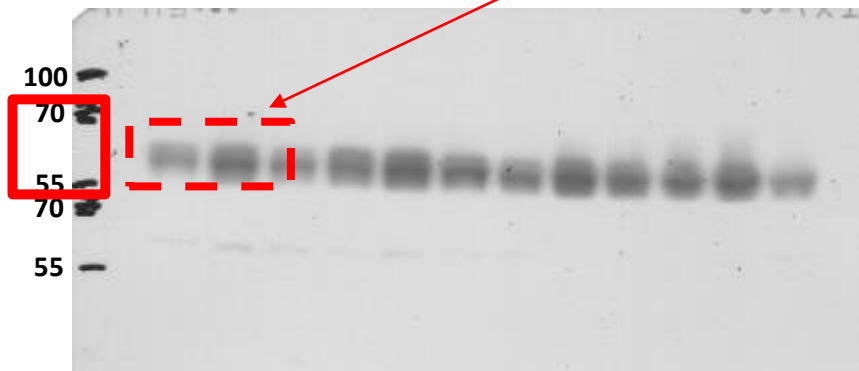
Long exposure x2

Fig 3B

11.19

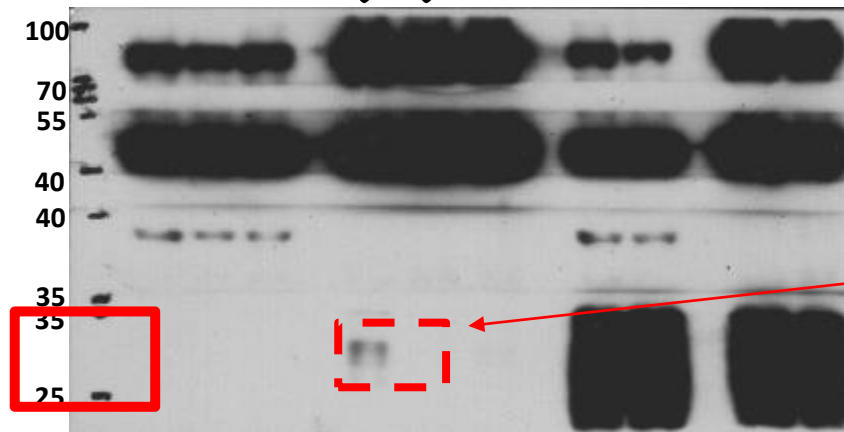
shCTL  
shTHY1

pSRC



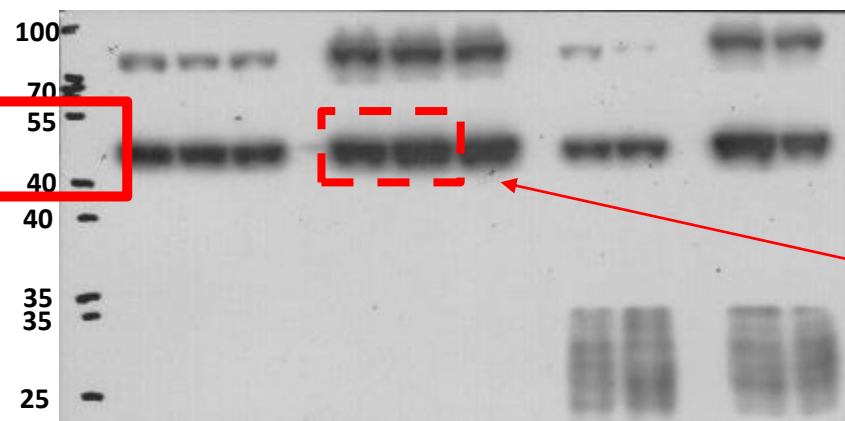
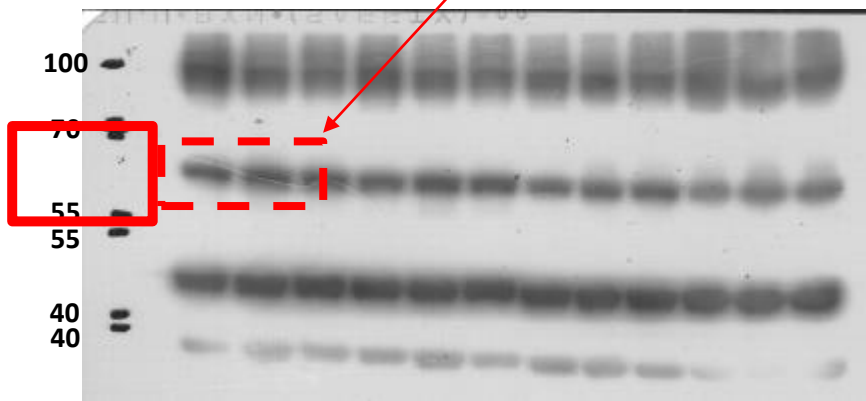
11.19

shCTL  
shTHY1



THY1

SRC



B-actin

Fig 3C

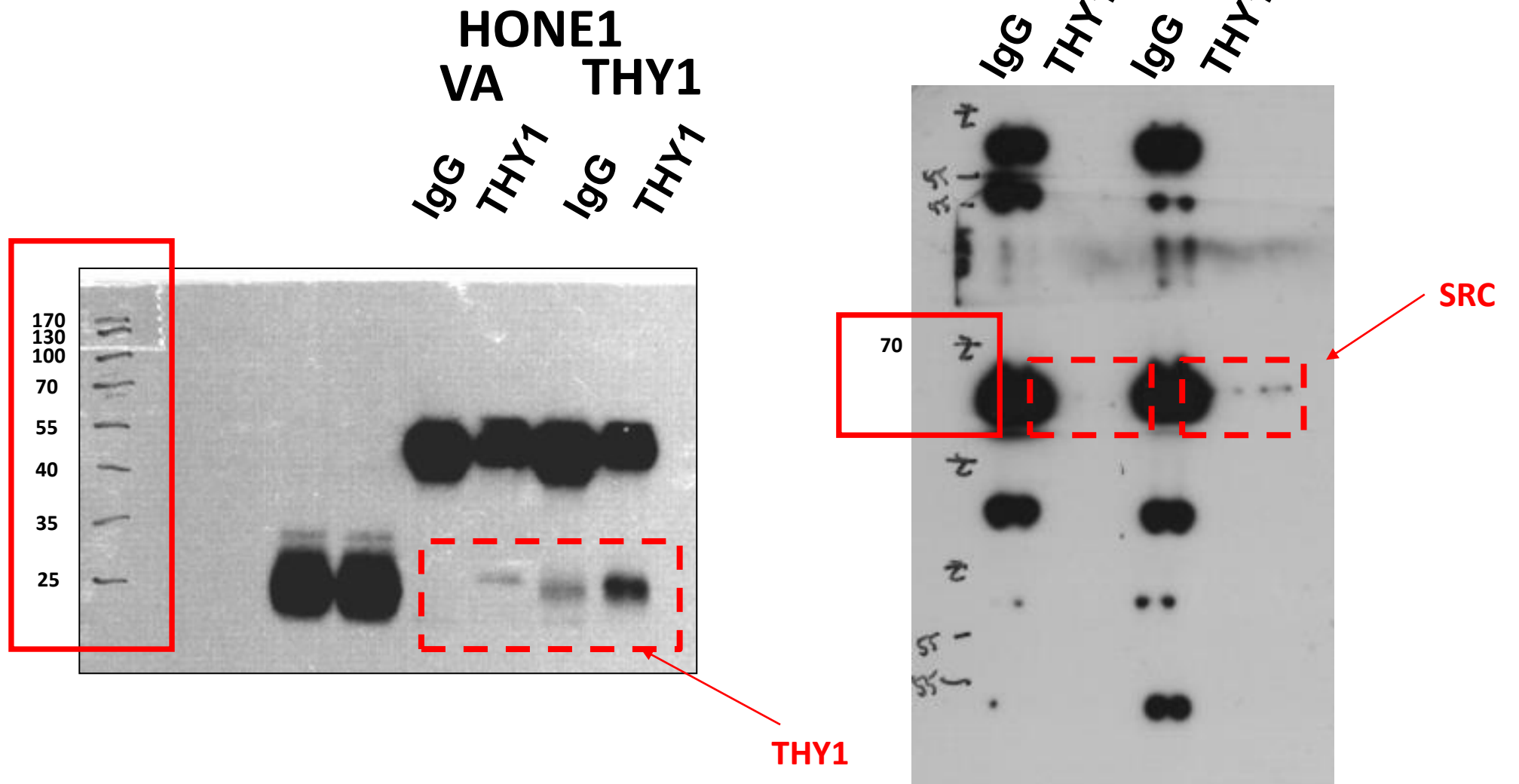


Fig 3D

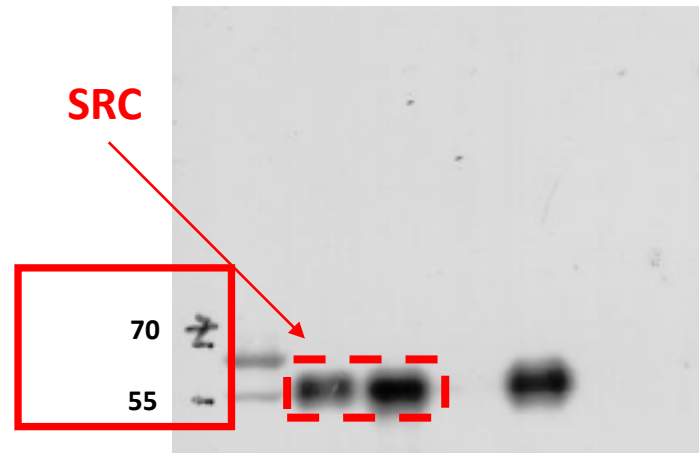


Fig 3E

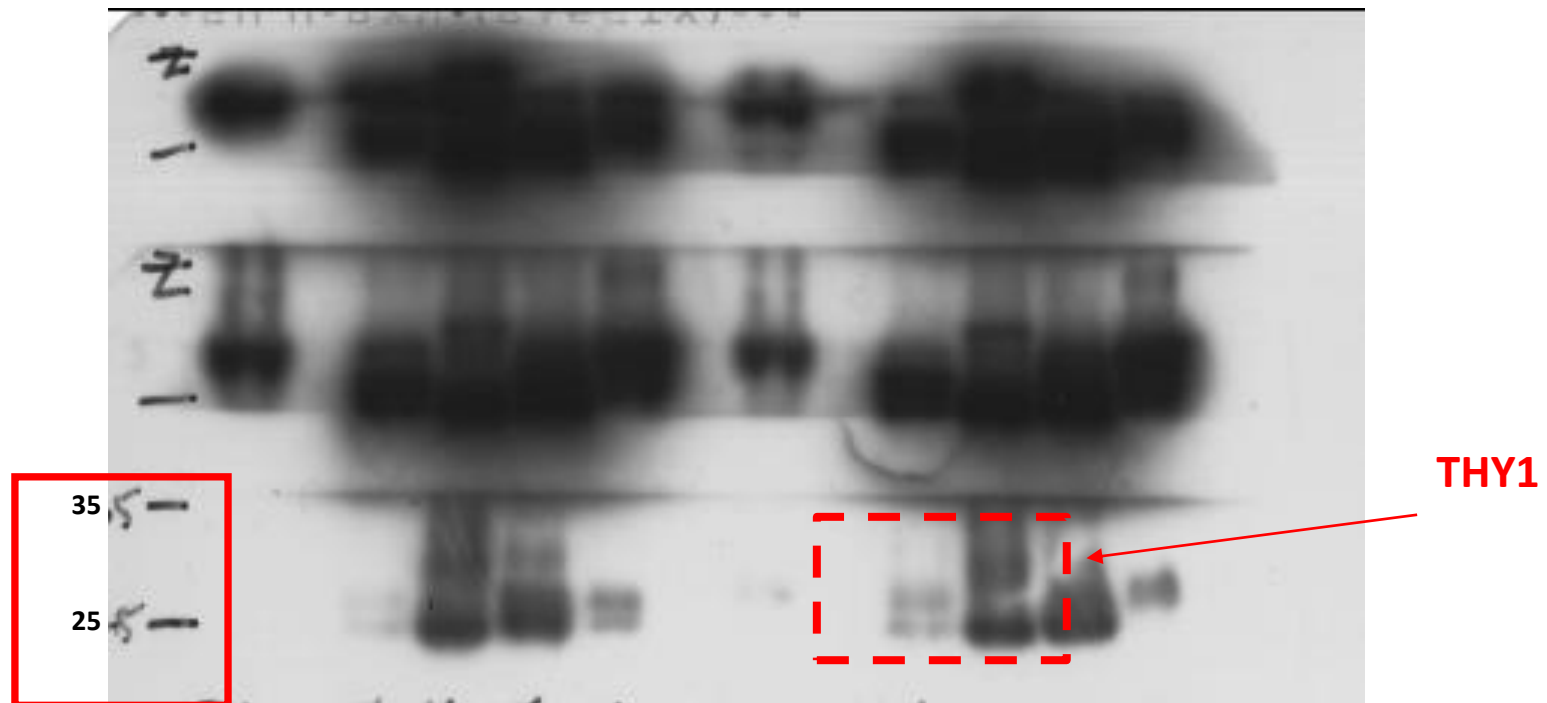


Fig 3F

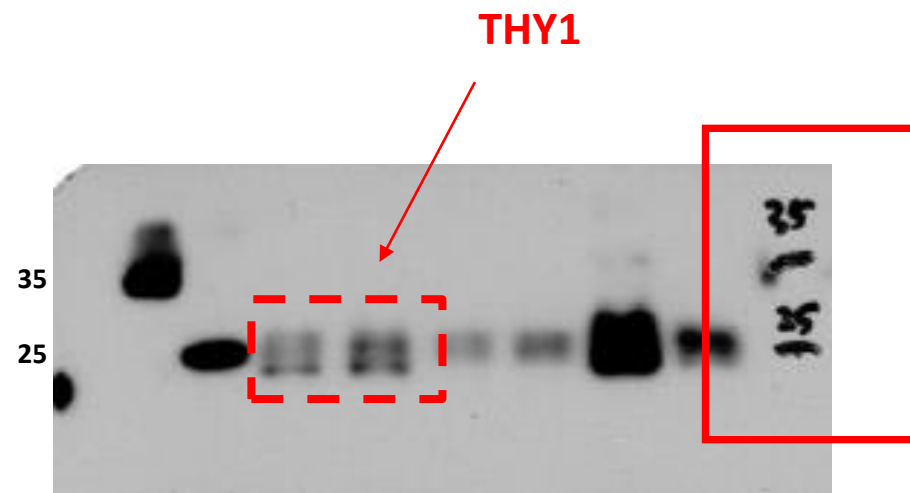




Fig 4A

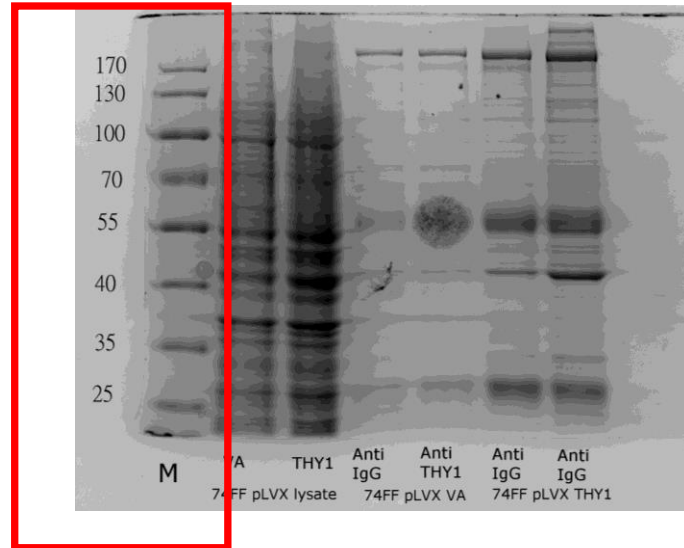


Fig 4B

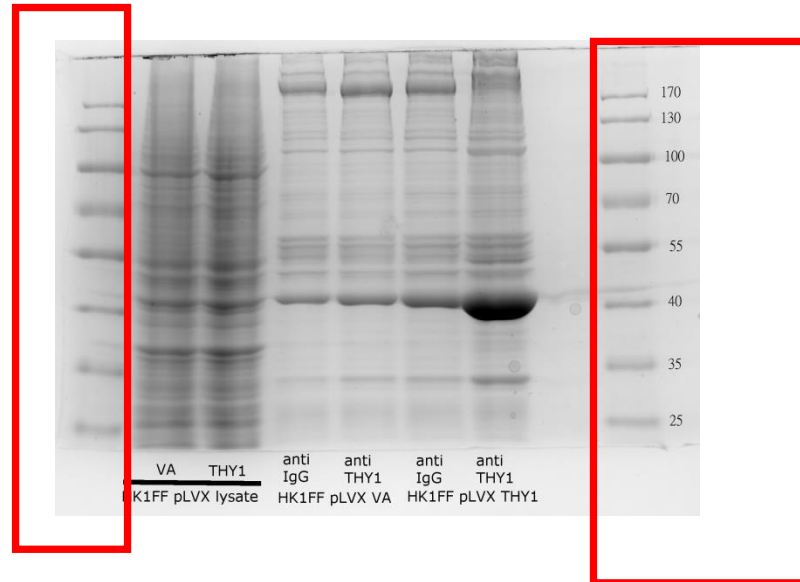
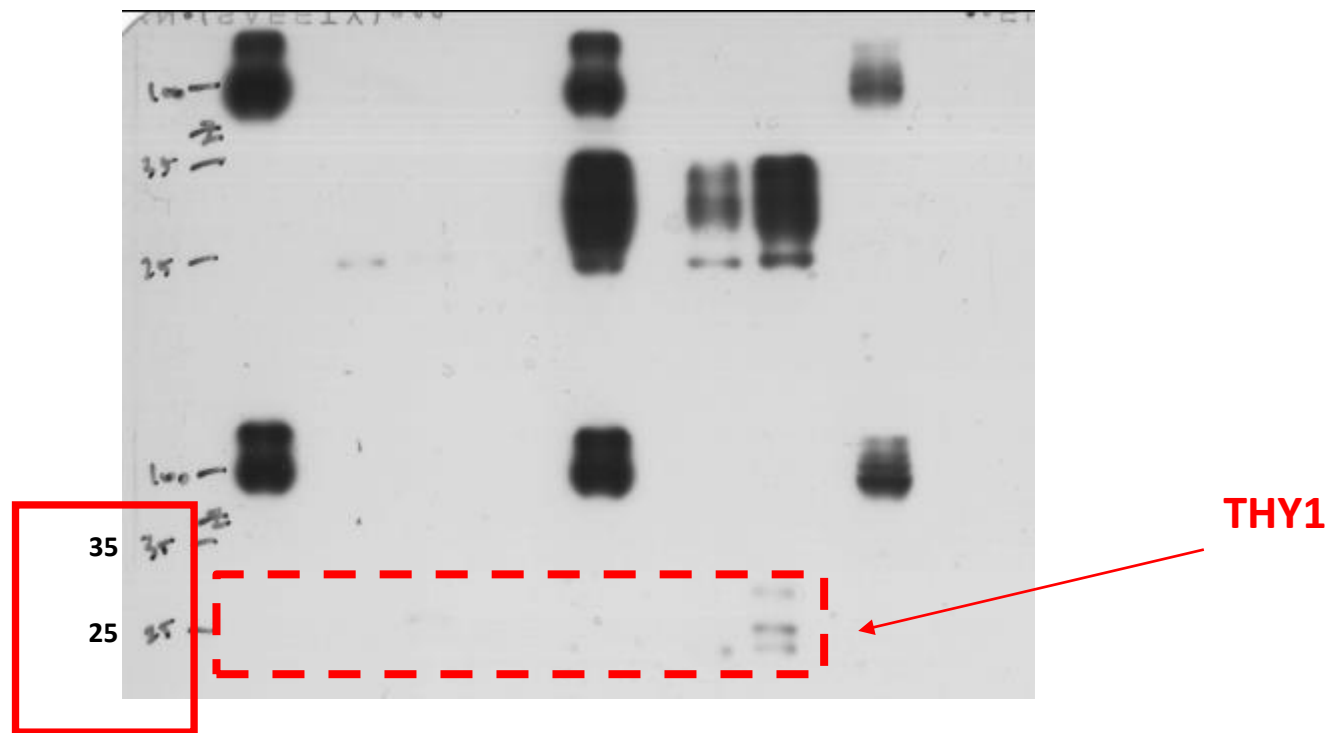


Fig 4C



**Fig 4D**

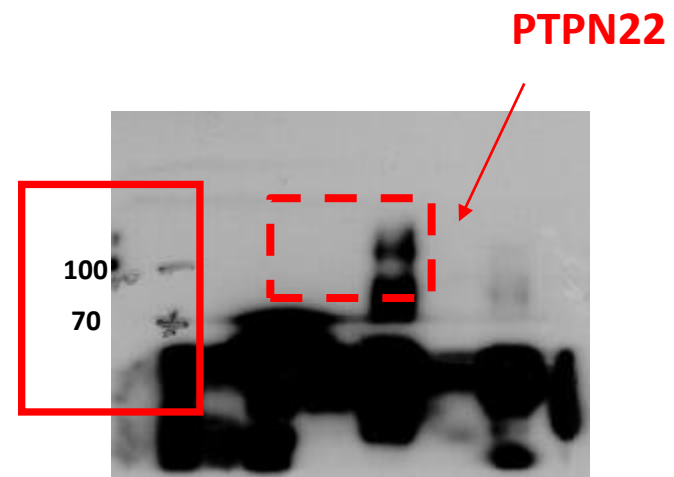
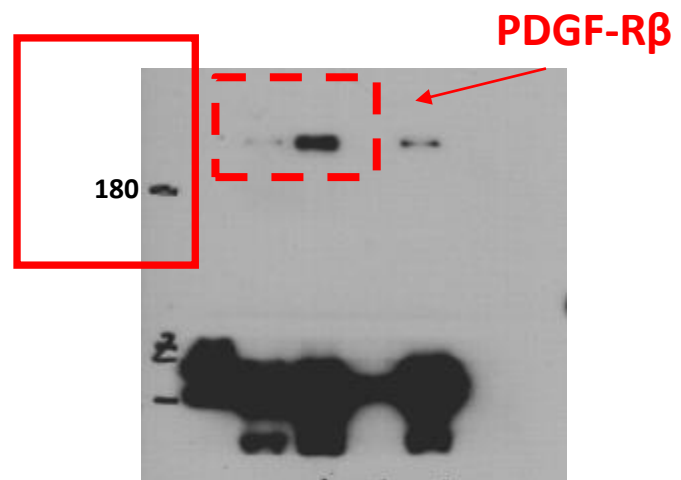


Fig 4F

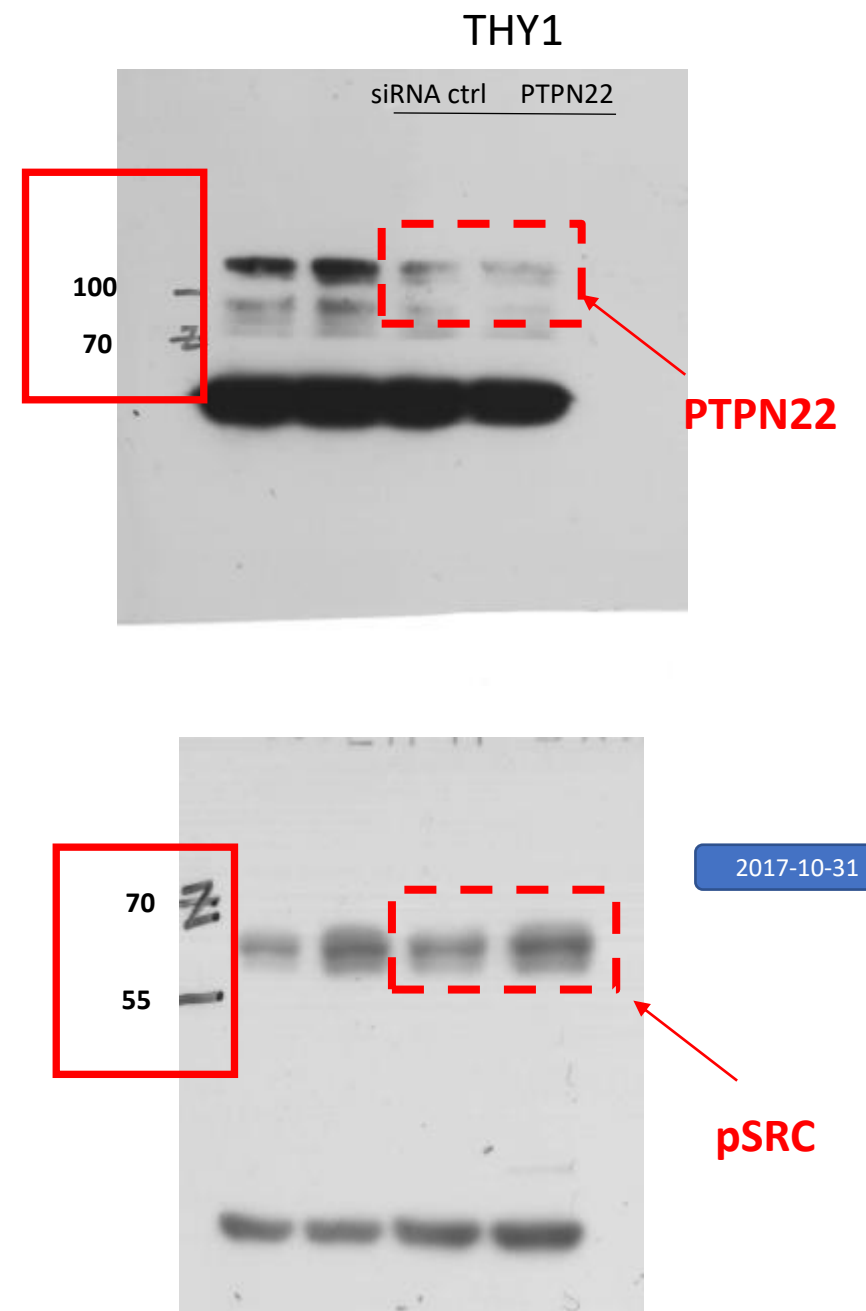
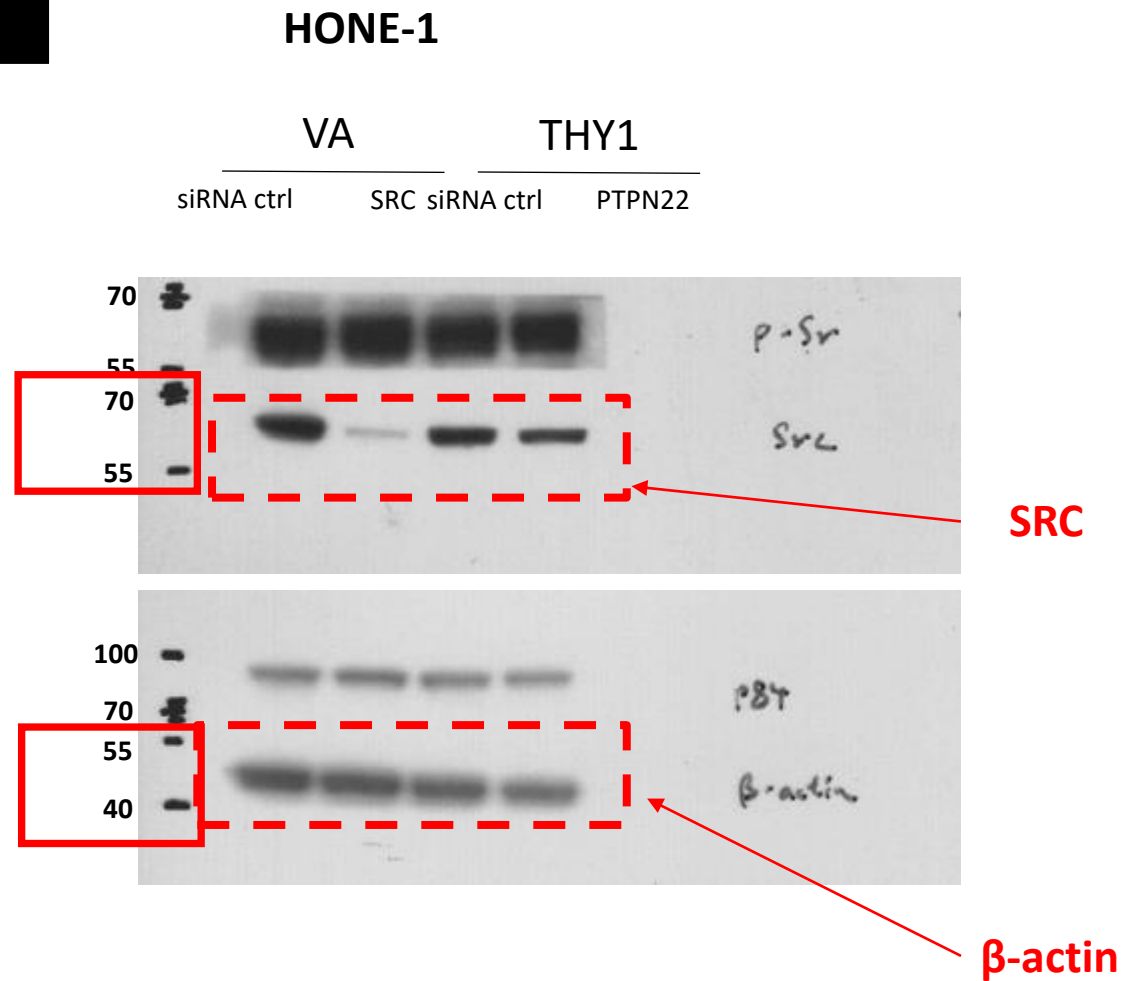


Fig 4J

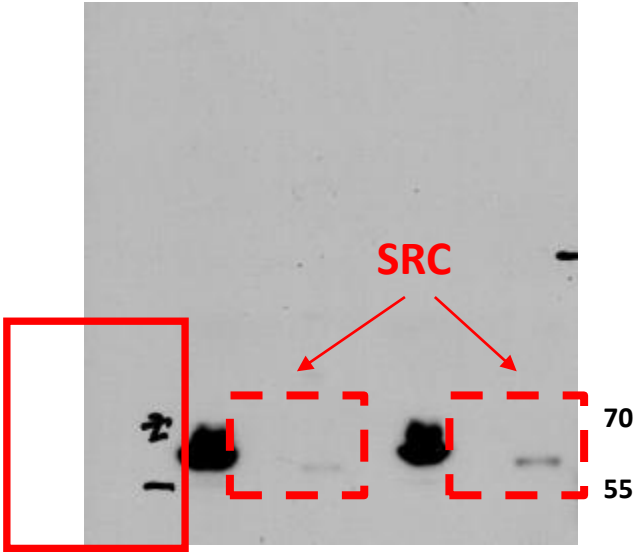


Fig 4K

