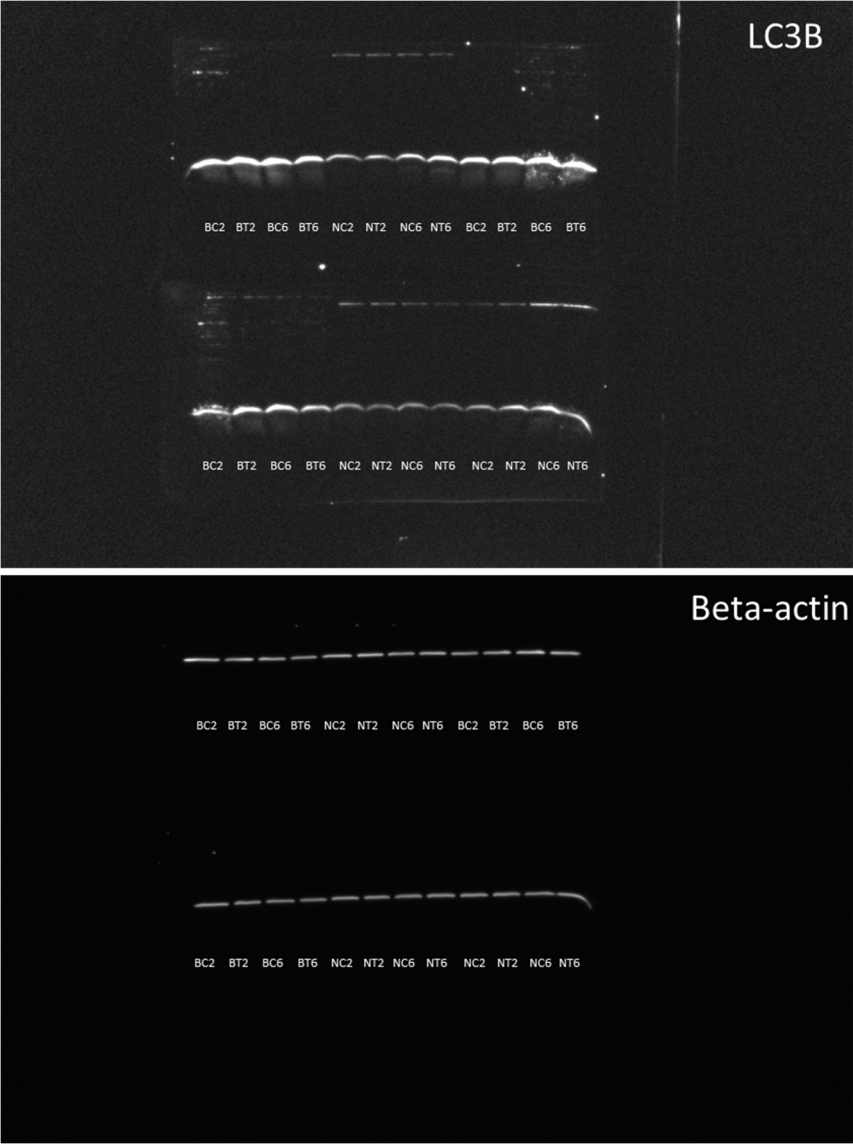
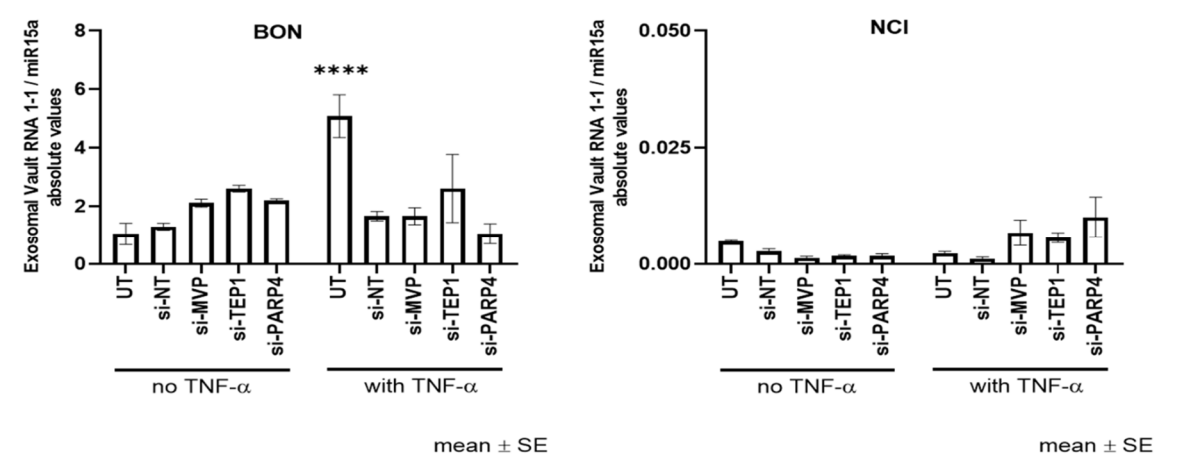


Supplementary Figure S1: MVP and Beta-actin Western Blots of control and TNF alpha treated BON and NCI-H295R cells. LC3B und Beta-actin Western Blots of BON and NCI-H295R control (BC, NC) or TNF alpha (BT, NT) treated cells. LC3B und Beta-actin Western Blots of control and EDPM treated NCI-H295R cells.

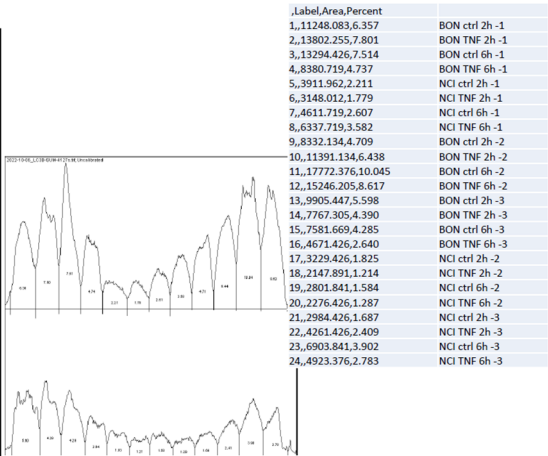
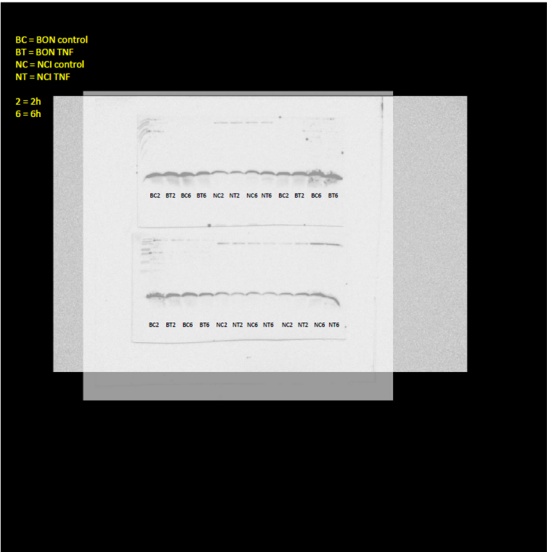


Supplementary Figure S2: Differential loading of vault RNA 1 under various si-RNA knockdown conditions for control and TNF alpha treated BON and NCI-H295R cells.

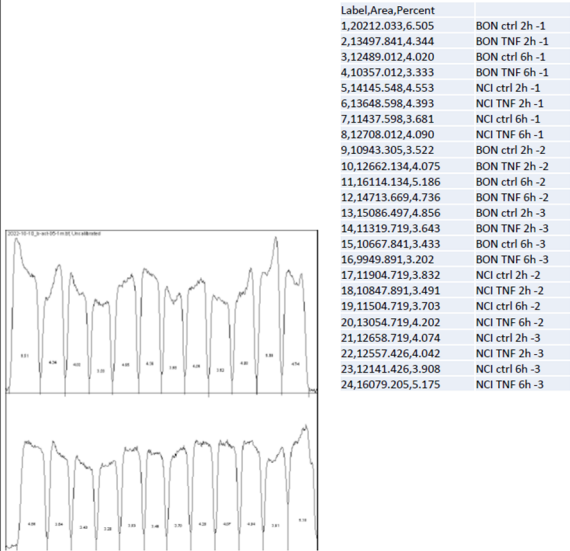
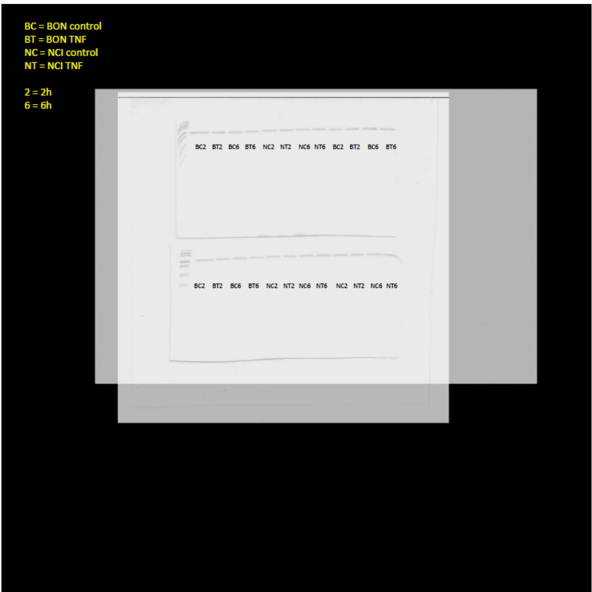


File S1: The whole western blots  
The Original WB of Figure 1

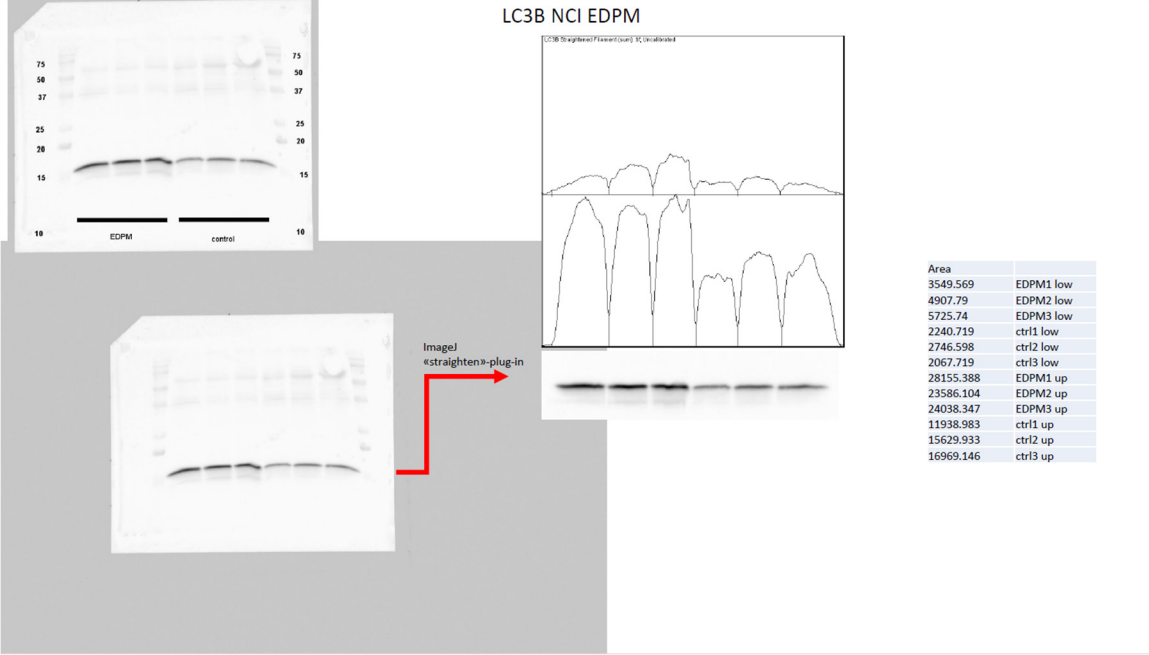
LC3B NCI,BON+TNFa



b-actin NCI,BON+TNFa

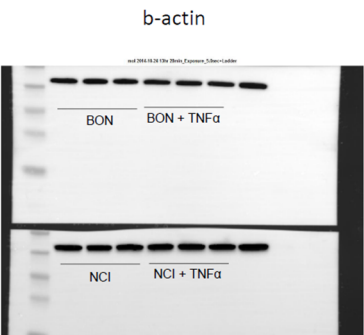
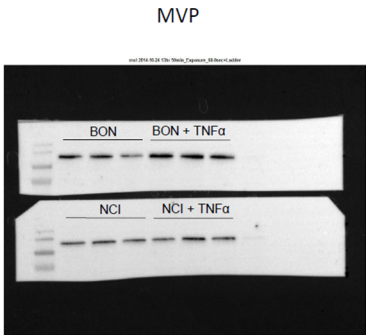


The Original WB of Figure 5 G



The Original WB of Figure 1 E

MVP NCI,BON +TNFa



	MVP	B actin	
Gel 1	9'608'317	16'465'903	BON -
	9'196'146	16'492'660	BON -
	5'170'246	15'679'075	BON -
	14'517'409	16'184'317	BON +
	13'546'288	16'387'903	BON +
	12'040'459	15'743'782	BON +
	291'435	20'054'853	MCF-7
Gel 2	7'916'075	19'865'924	NCI -
	9'431'560	19'299'217	NCI -
	7'962'024	22'282'945	NCI -
	7'214'782	22'922'602	NCI +
	12'180'752	23'848'430	NCI +
	9'134'267	23'126'137	NCI +
	315'192	26'844'480	MCF-7