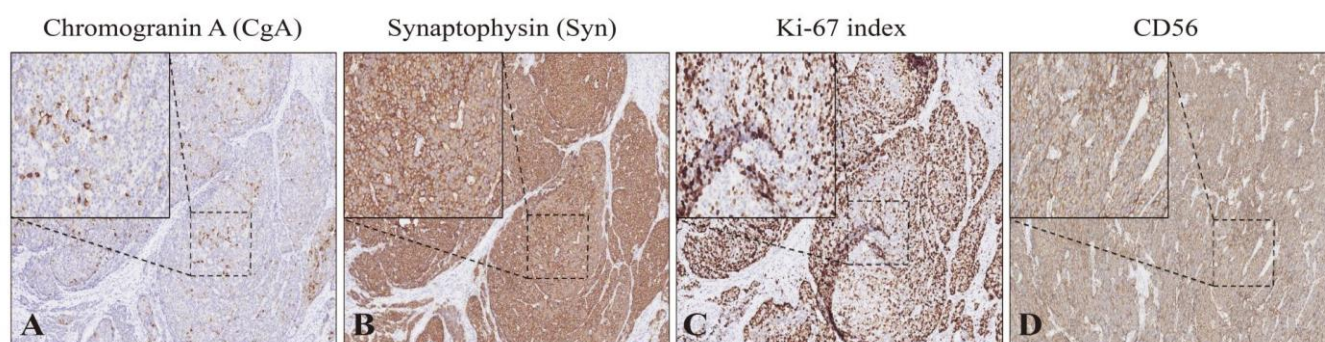


Supplementary Materials

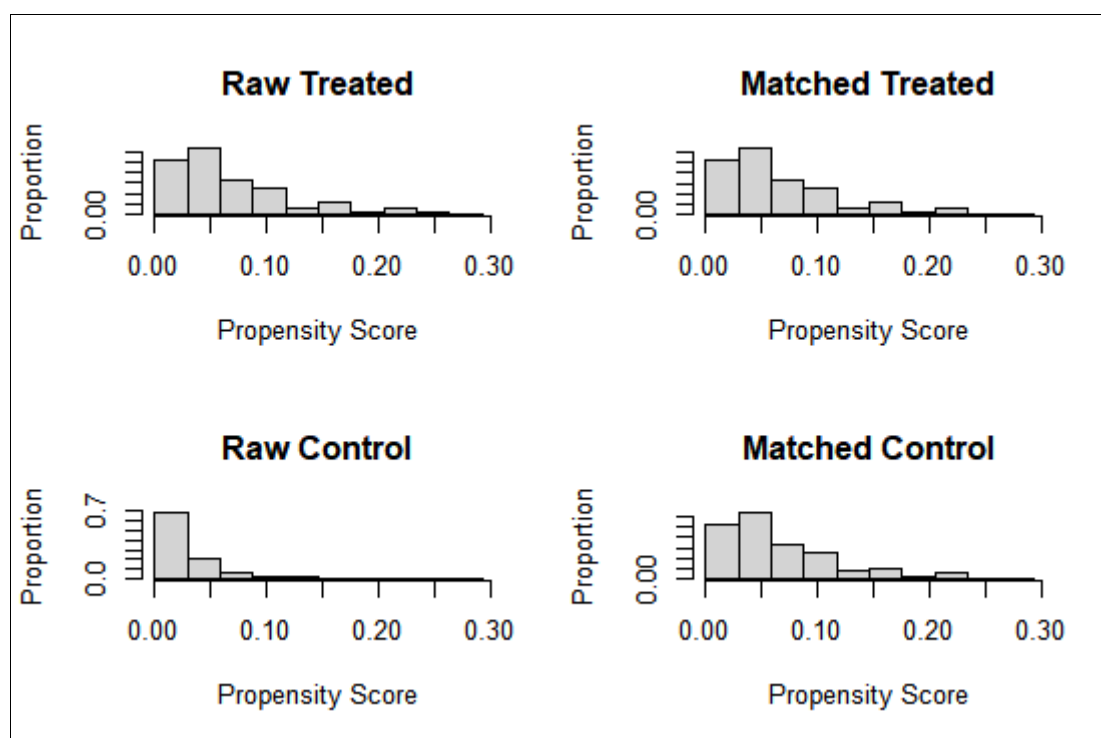
# Analysis of the Clinicopathological Characteristics, Prognosis, and Lymphocyte Infiltration of Esophageal Neuroendocrine Neoplasms: A Surgery-Based Cohort and Propensity-Score Matching Study



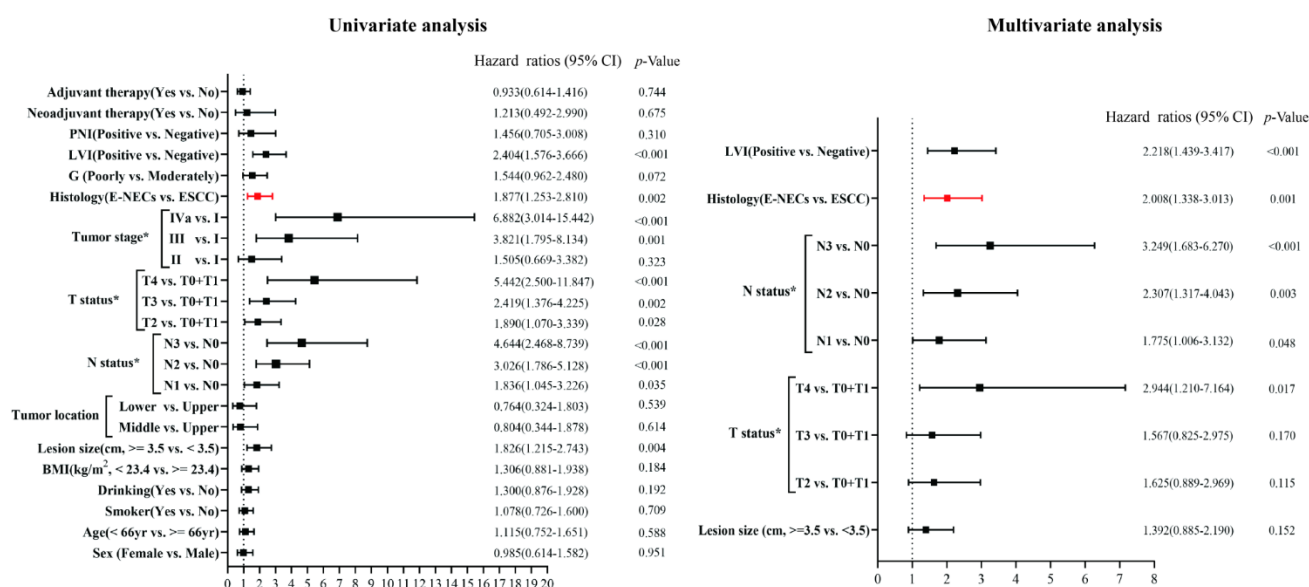
**Figure S1.** The specific tumor markers for E-NENs under a 400× high-power field. (A. Chromogranin A; B. Synaptophysin; C. CD-56; D. Ki-67 expression).

**Table S1.** The information of products and reagents related the study.

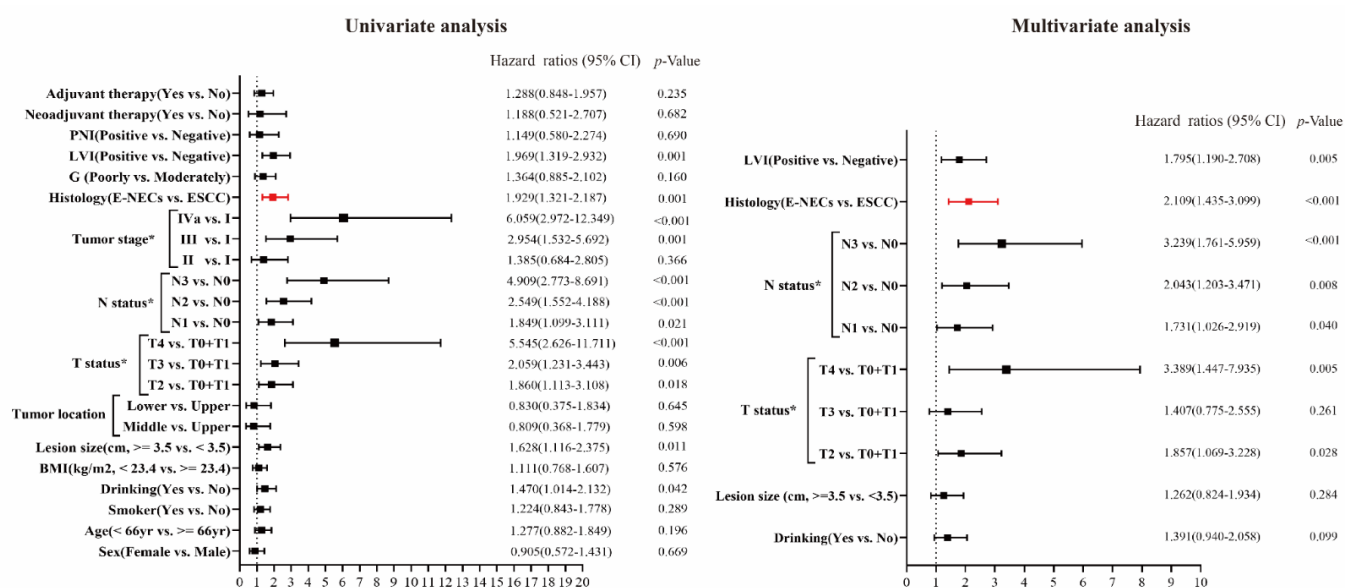
Products	Information	Remarks
CD4 antibodies	AB133616, Abcam, Cambridge, UK	The anti-CD4 and anti-CD8 antibodies were diluted by 3% Bovine Serum Albumin (BSA) solution with a ratio of 1 to 400, while anti-CD20 antibodies' dilution ratio was 1 to 1000
CD8 antibodies	85336, Cell Signaling Technology, USA	
CD20 antibodies	AB78237, Abcam, Cambridge, UK	
Diaminobenzidine chromogen	CR2204077, Servicebio, CHN	
Haematoxylin	GK500710, GeneTech(Shanghai), CHN	
Eosin	CR2101102, Servicebio, CHN	



**Figure S2.** Standardized bias across covariates between ESCC and E-NECs has been well balanced after matching. Variables used for matching included age, tumor location, T status, N status, differentiation, LVI, neoadjuvant and adjuvant therapy. Abbreviations: LVI, lymphovascular invasion; T status and N status were both included pathological category [pT, pN, pStage] and category after neoadjuvant therapy [ypT, ypN, ypStage].



**Figure S3.** Univariate and multivariate analysis of variables associated with overall survival after matching<sup>#</sup>. Abbreviations: G, tumor differentiation; ESCC, esophageal squamous cell carcinoma; E-NECs, esophageal neuroendocrine carcinomas; OS, overall survival; BMI, body mass index; LVI, lymphovascular invasion; PNI, perineural invasion. \*Both T status, N status, and tumor stage included the pathological category (pT, pN, pStage) and the category (ypT, ypN, ypStage) after neoadjuvant therapy. <sup>#</sup> The hazard ratios for OS were calculated based on the cohort excluding the 3-cases NET.



**Figure S4.** Univariate and multivariate analysis of variables related to recurrence-free survival after matching<sup>#</sup>. Abbreviations: G, tumor differentiation; ESCC, esophageal squamous cell carcinoma; E-NECs, esophageal neuroendocrine carcinomas; RFS, recurrence-free survival; BMI, body mass index; LVI, lympho-vascular invasion; PNI, perineural invasion. \*Both T status, N status, and tumor stage included the pathological category (pT, pN, pStage) and the category (ypT, ypN, ypStage) after neoadjuvant therapy. <sup>#</sup> The hazard ratios for RFS were calculated based on the cohort excluding the 3-cases NET.