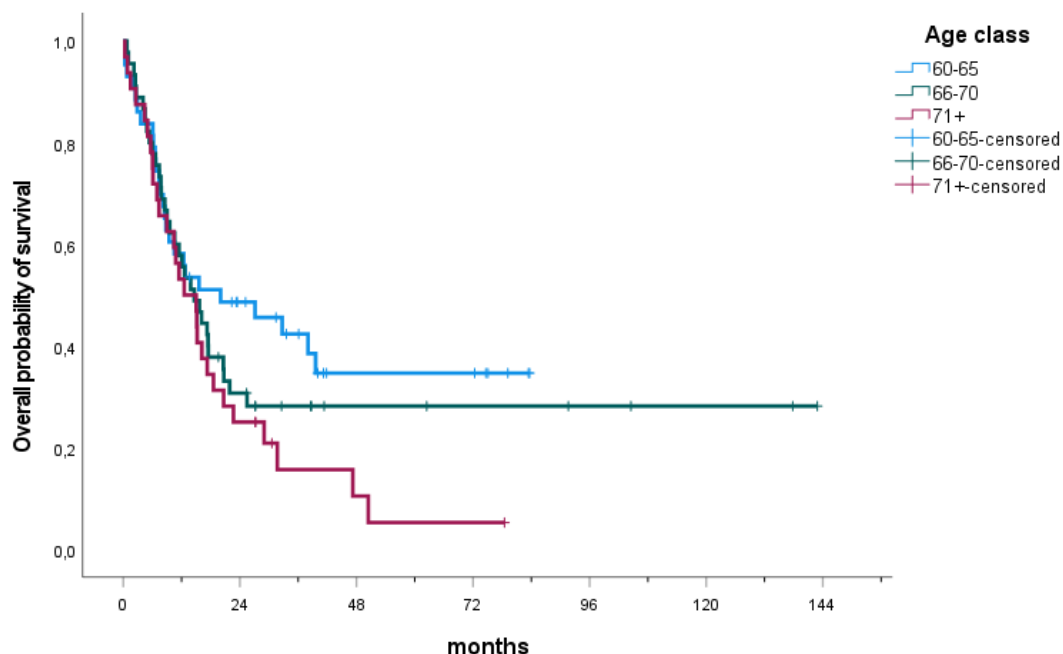


### Supplementary figure.



**Supplementary Figure S1. Overall survival in different patient age groups.** The 120 intensively treated patients were stratified according to their age. Their median OS decreased significantly with enhancing age. Patients between 60-65 years (n=43, 35.8%) had a longer median OS with 20.1 months (IQR: 6.7-not reached), compared to 66-70-year-old patients (n=45, 37.5%) with 14.6 months (IQR: 7.4-not reached) and  $\geq 71$ -year-old patients (n=32, 26.7%) with a median OS of 12.6 months (IQR: 6.1-22.7), p=0.147.