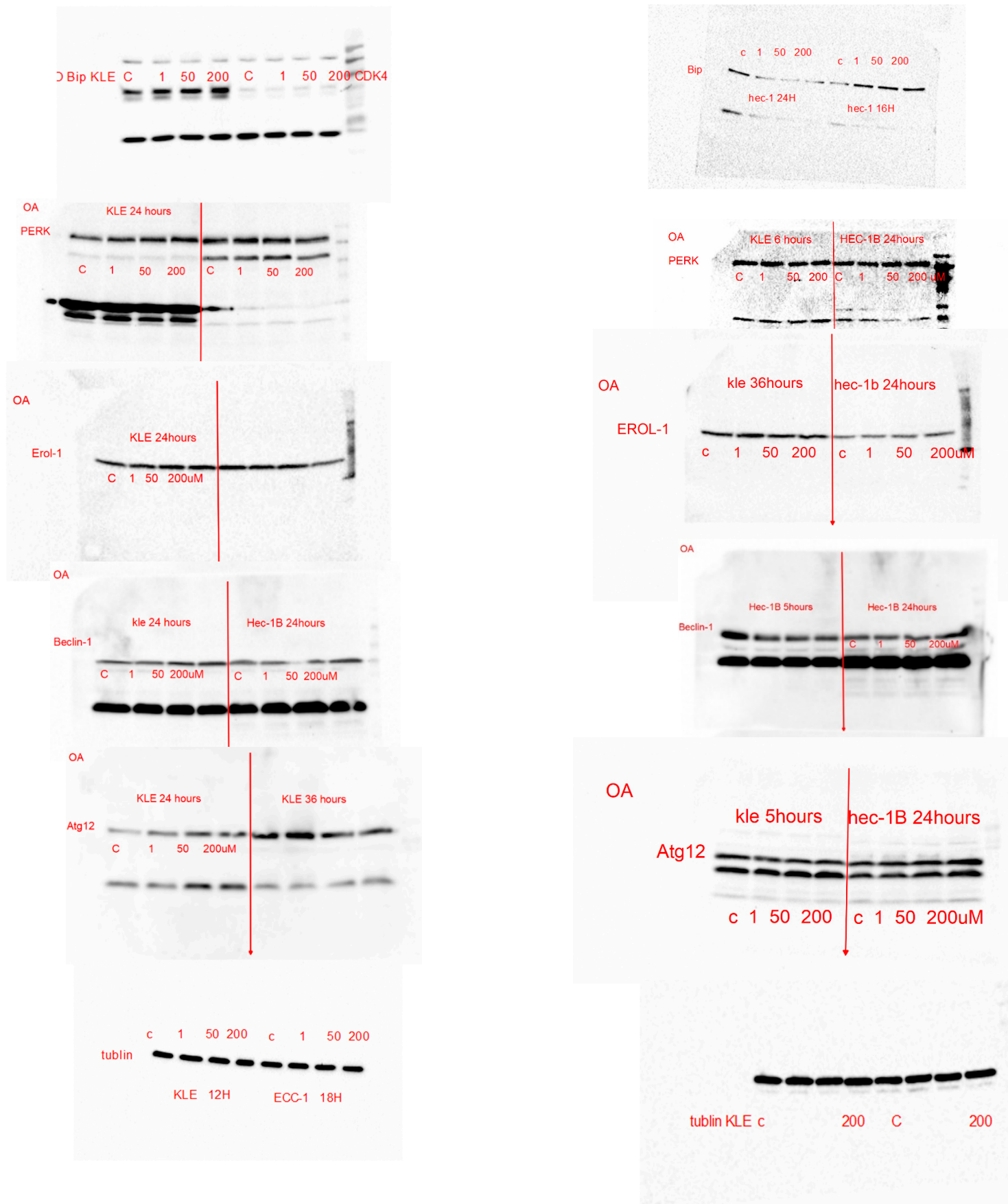


Figure S1: Effect of OA on the expression of proteins related to cellular stress, autophagy, and cell apoptosis in EC.



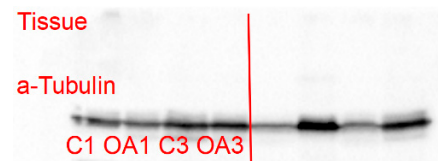
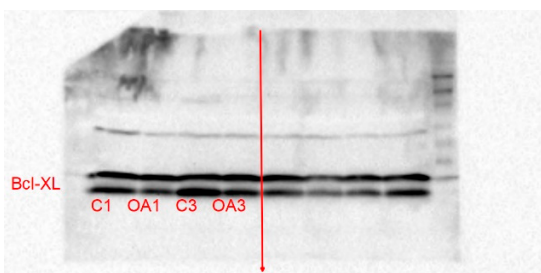
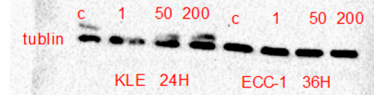
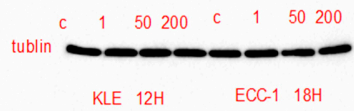
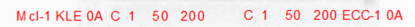
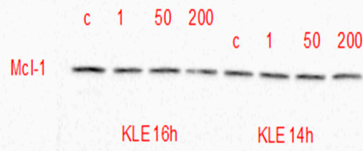
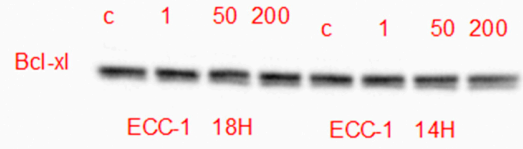
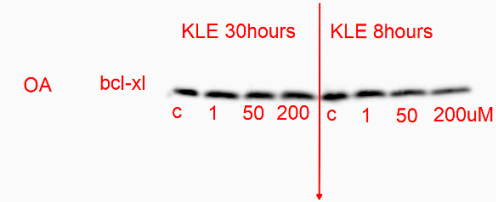


Figure S2: OA decreased the expression of proteins related to cell cycle in EC cells.

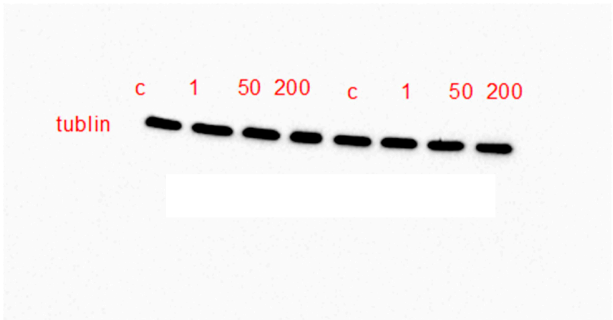
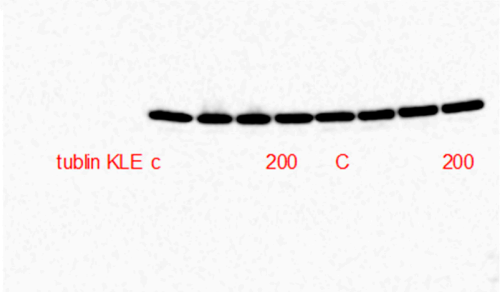
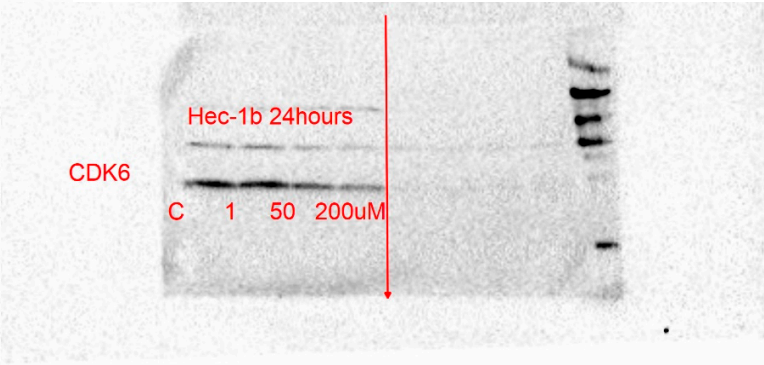
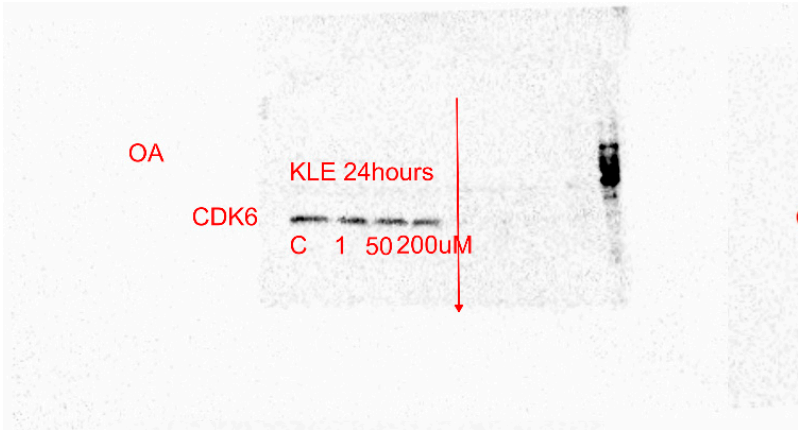
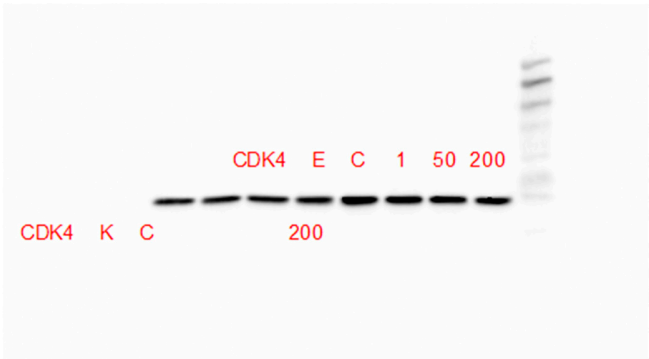
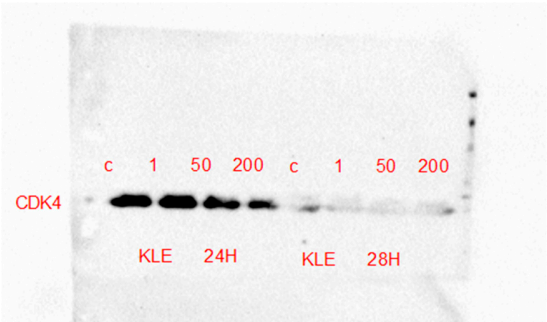


Figure S3: Effect of OA on the expression of proteins related to EMT in EC cells.

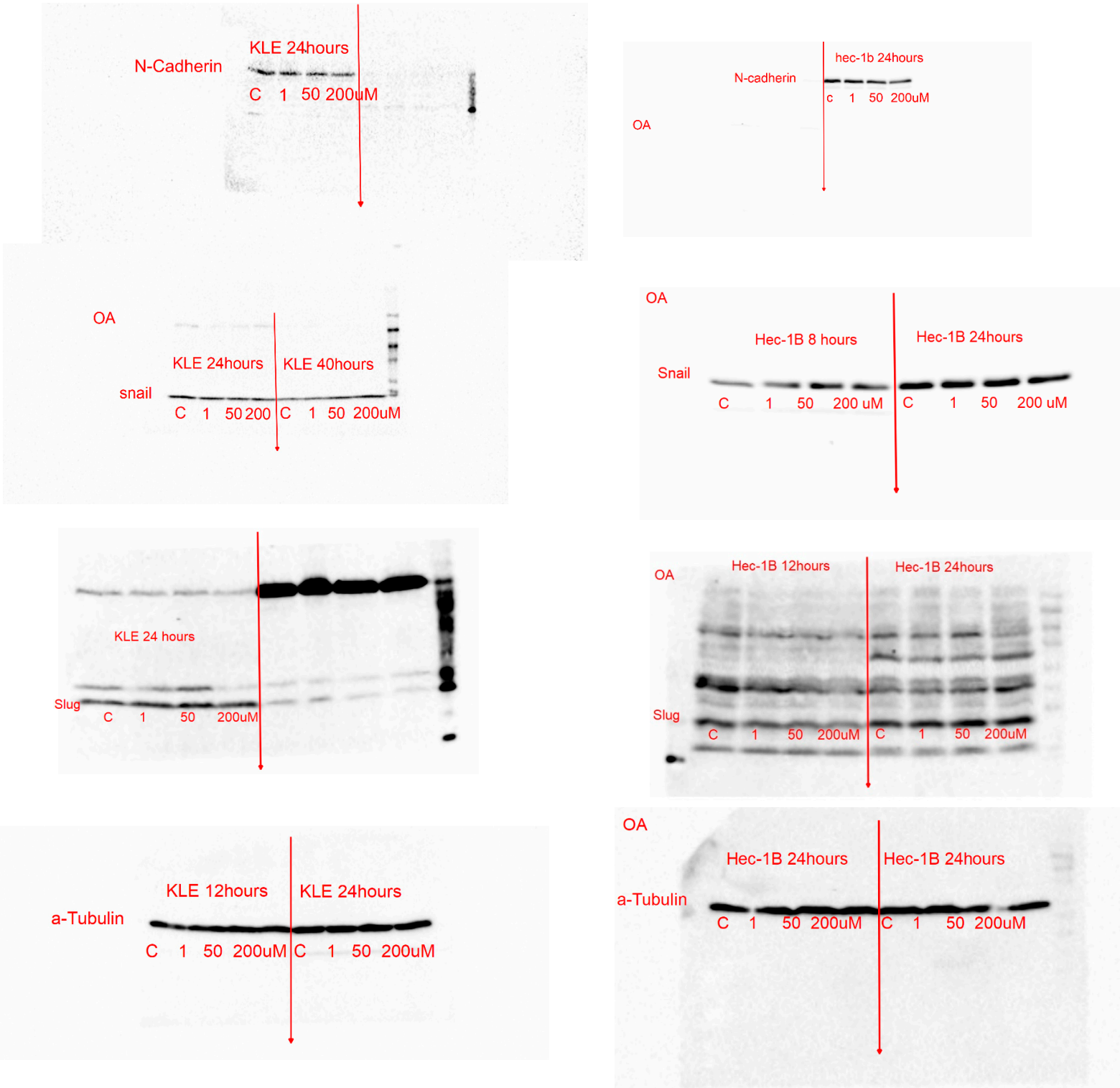
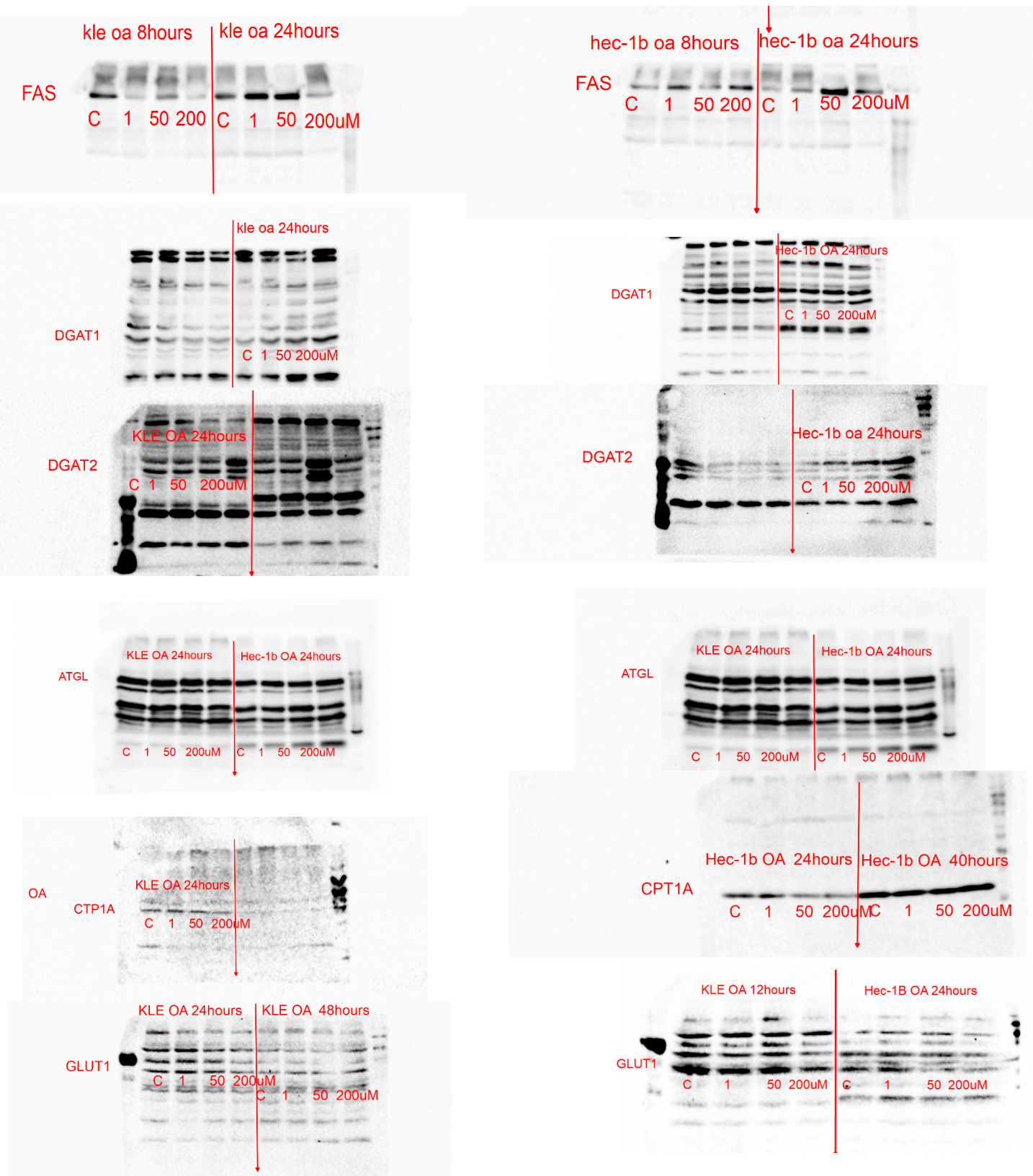
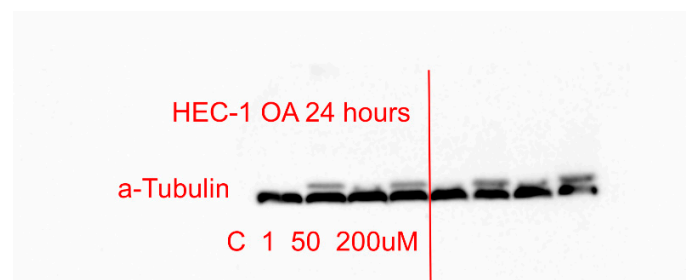
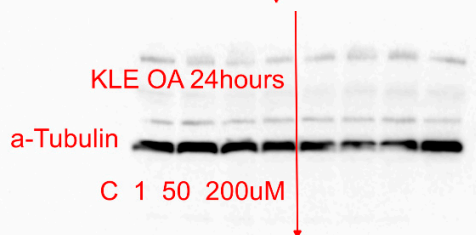
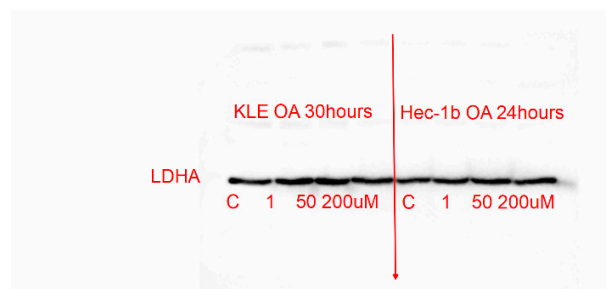
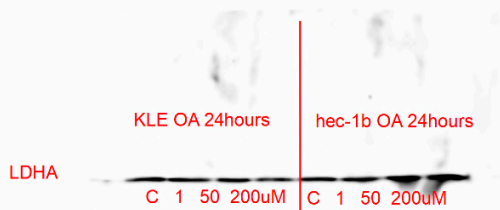
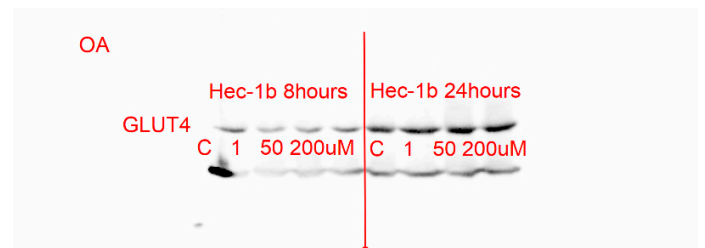
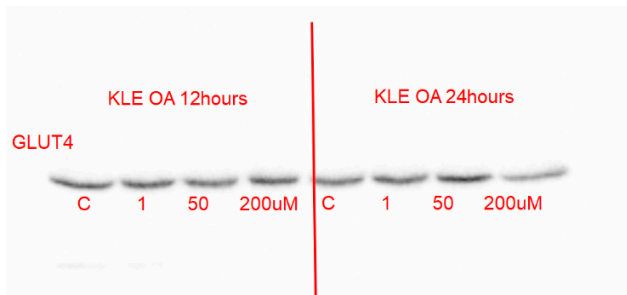


Figure S4: Effect of OA on the expression of proteins related to fatty acid metabolism in EC cells.





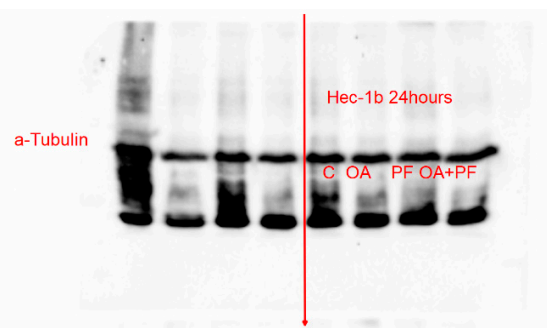
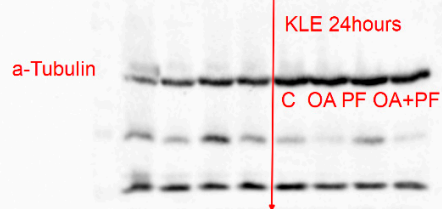
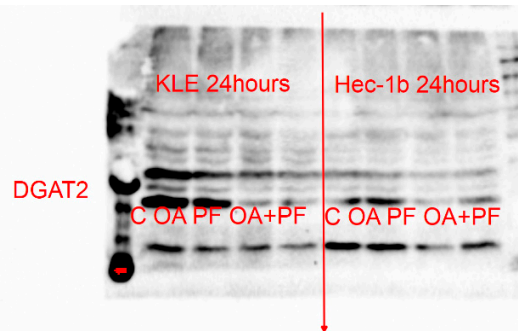
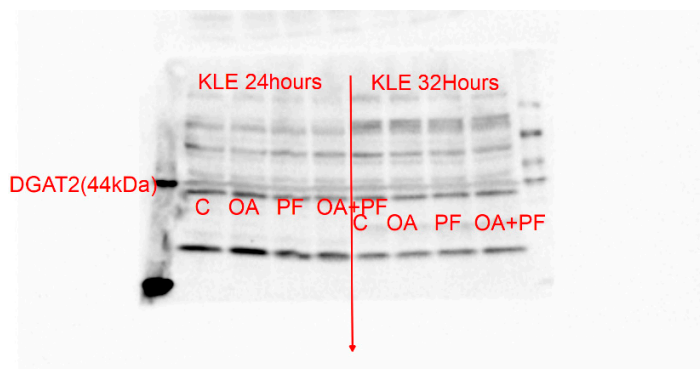
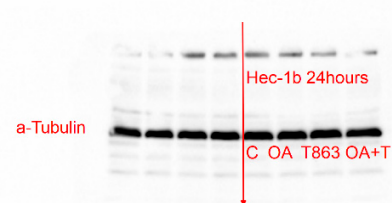
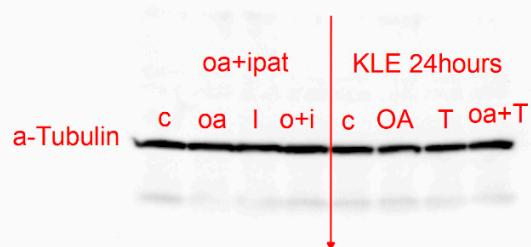
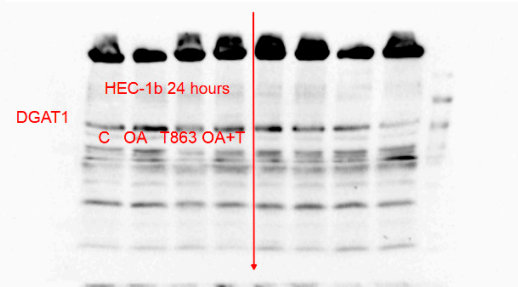
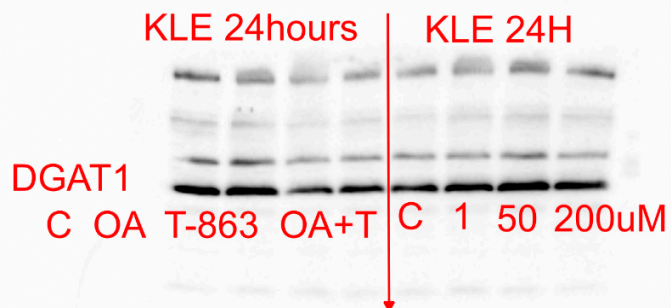
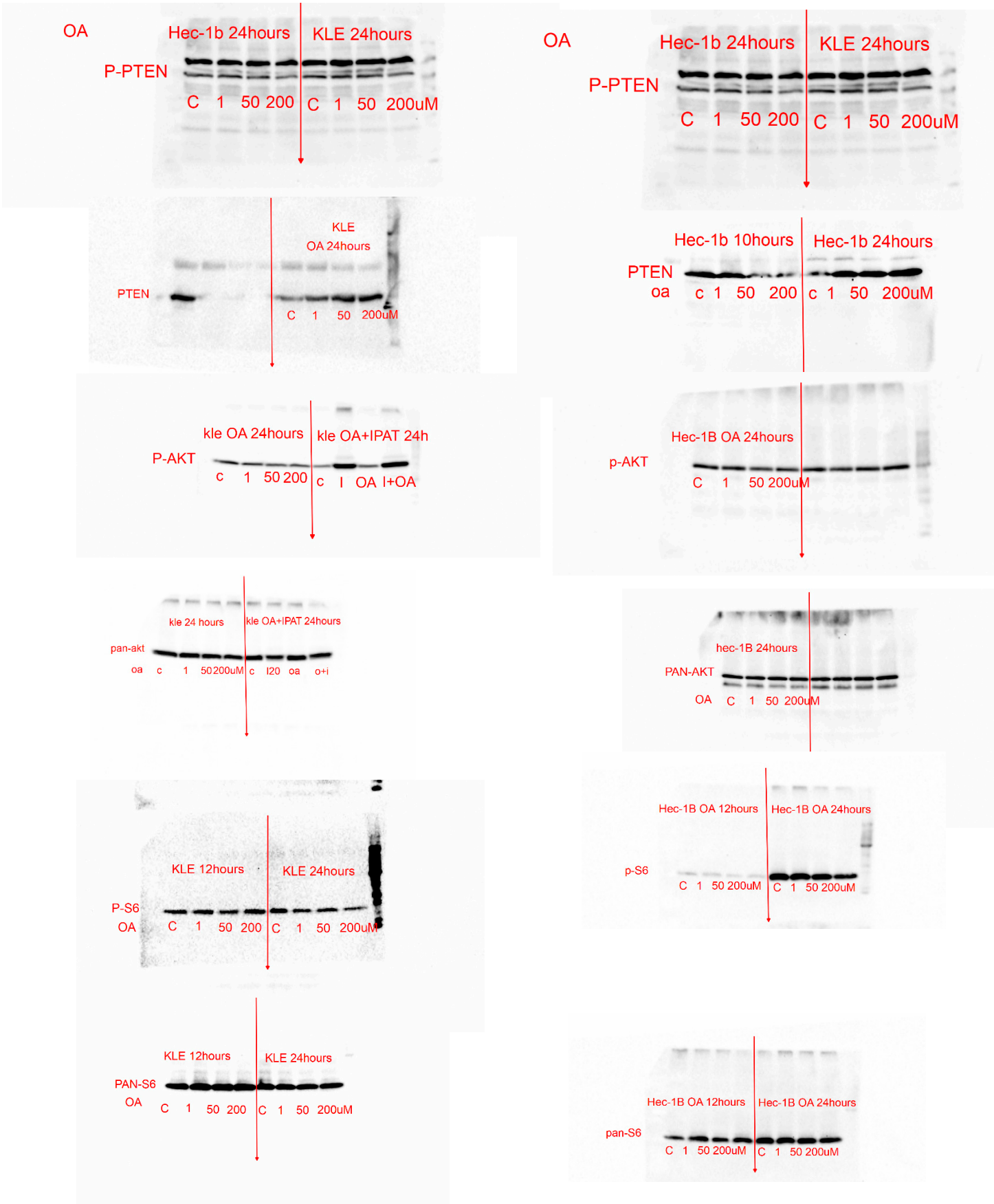
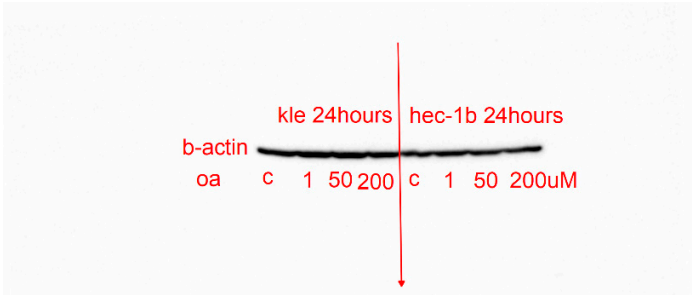
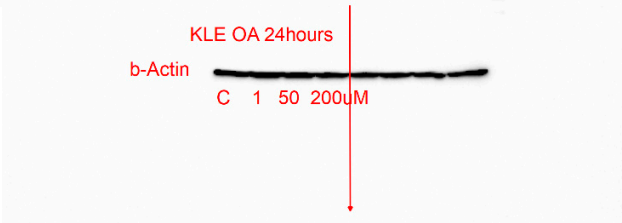
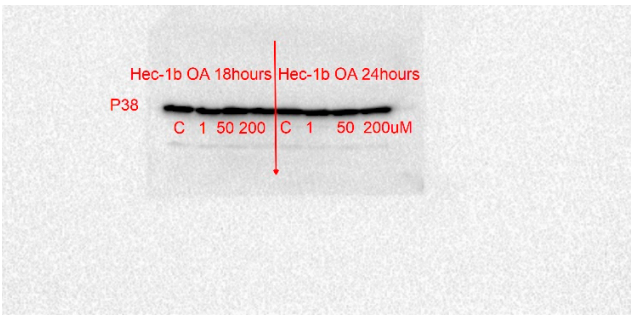
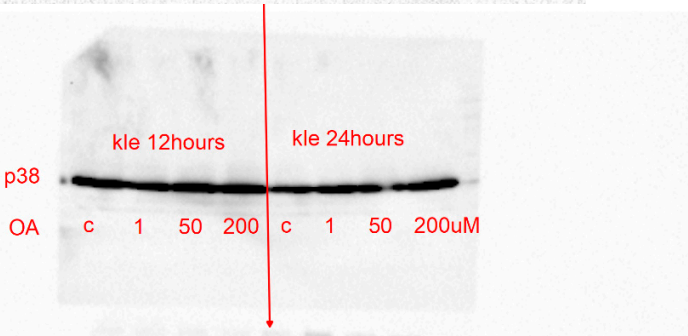
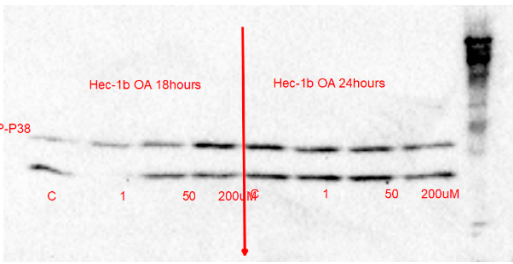
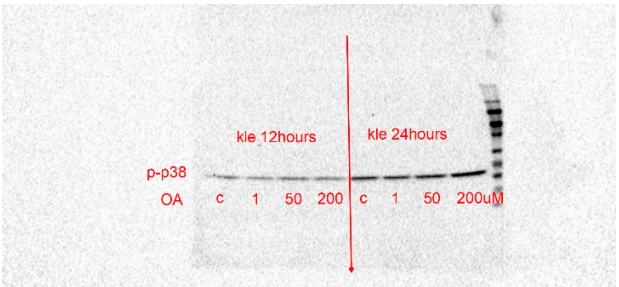
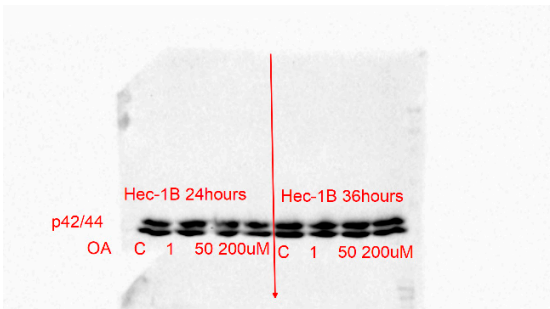
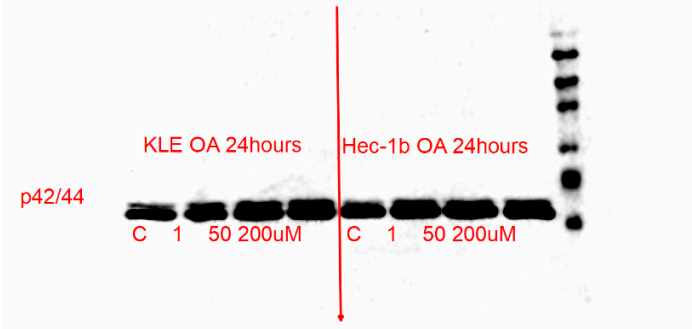
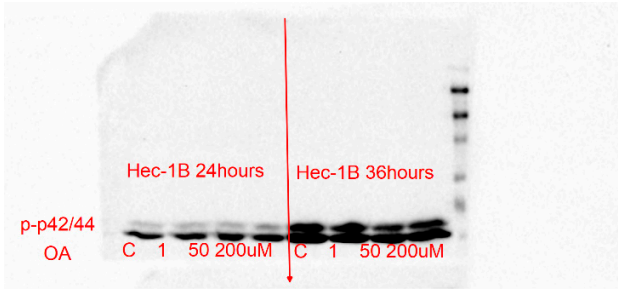
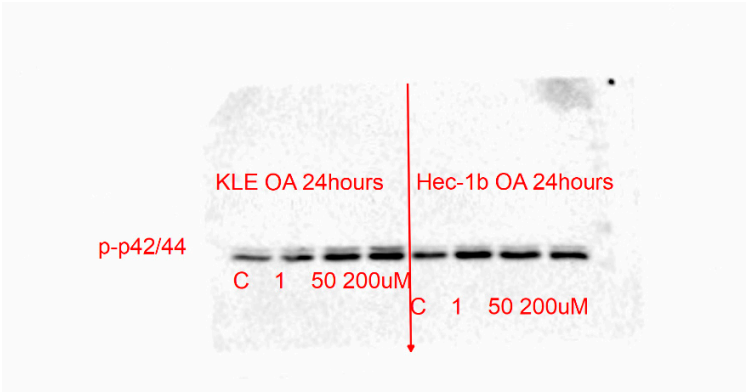


Figure S5: Effect of OA on the expression of proteins related to PTEN/AKT/mTOR and MAPK pathways in EC cells.





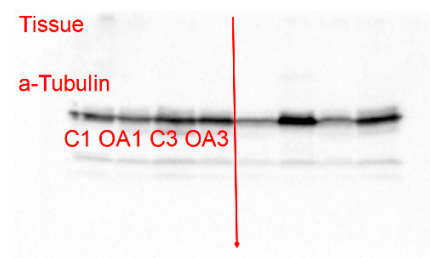
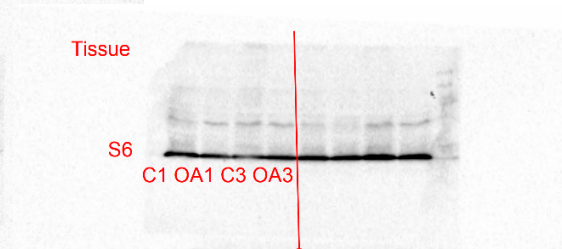
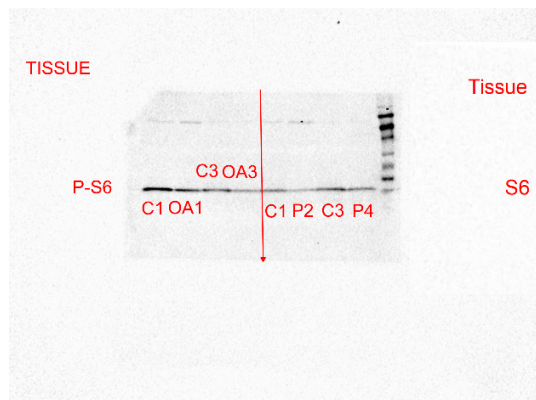
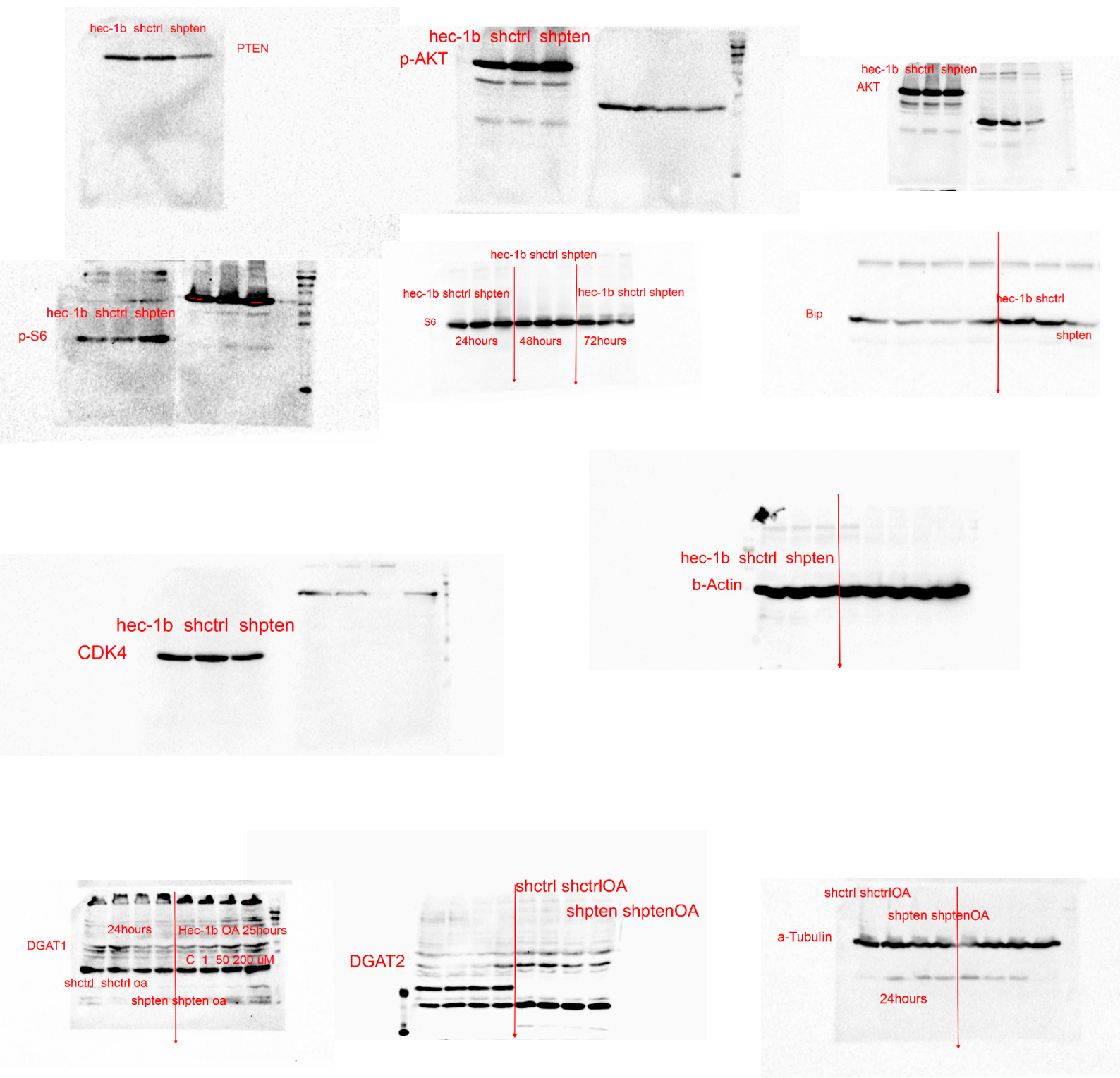


Figure S6: PTEN knockdown led to the change of protein expression in HEC-1B cells and partially reversed the inhibitory effects of OA on the related protein expression.



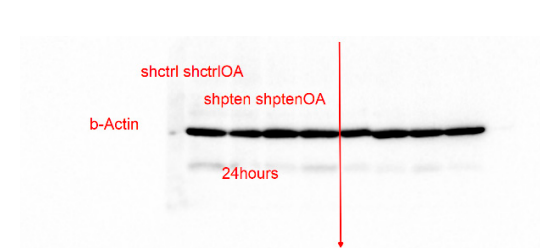
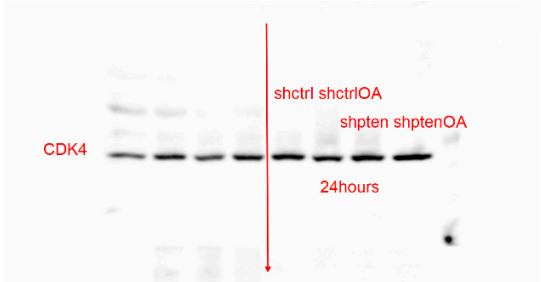
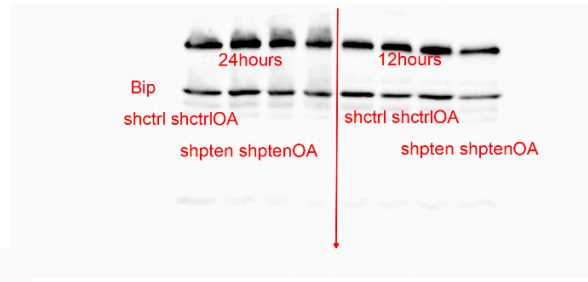
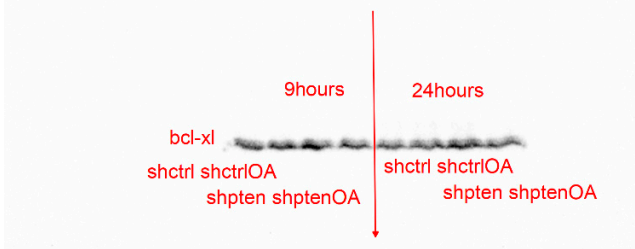
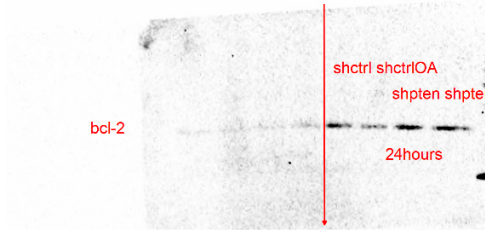
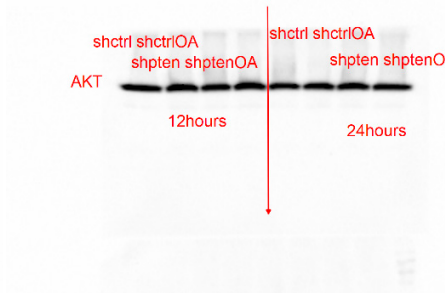
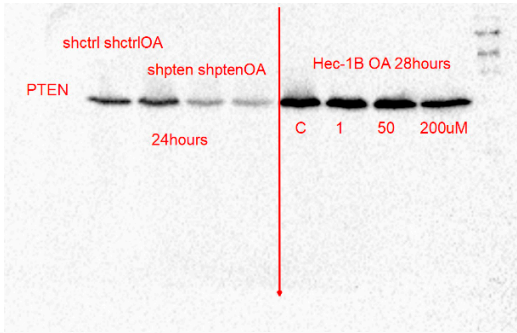
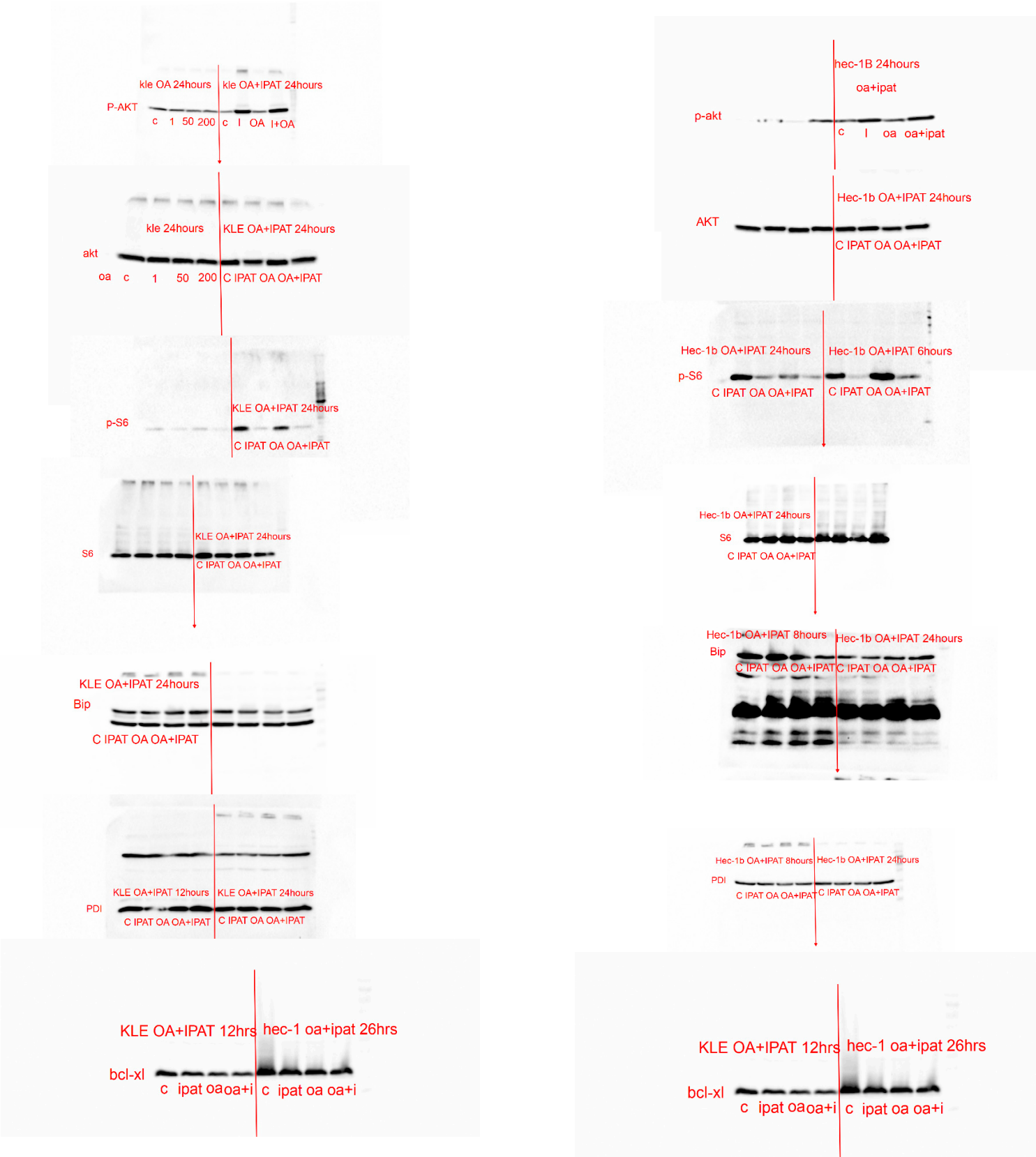


Figure S7: The combination of IPAT and OA showed the greatest effects on the expression of related protein than either agent alone.



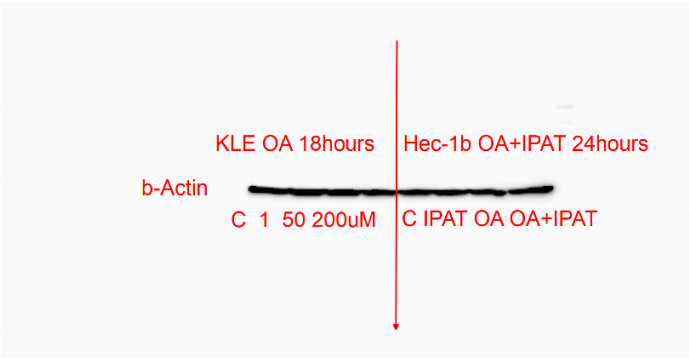
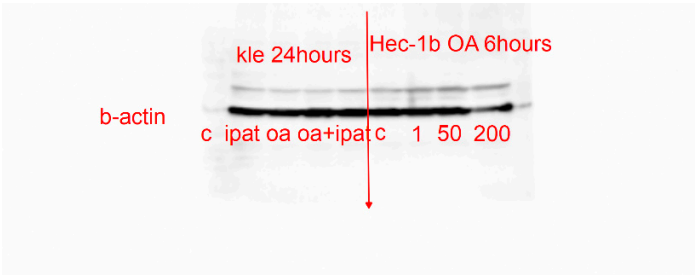
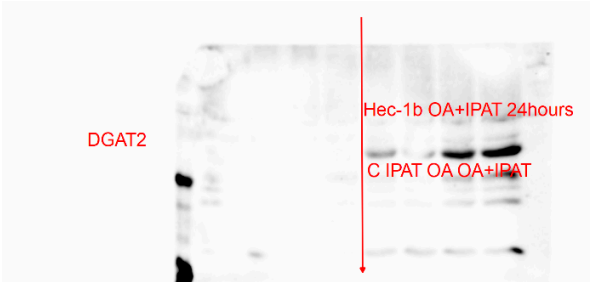
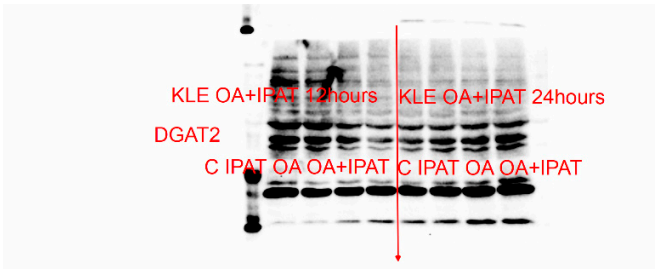
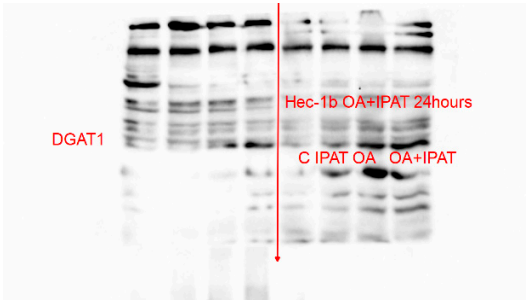
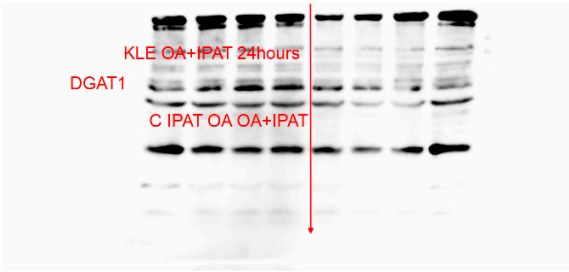
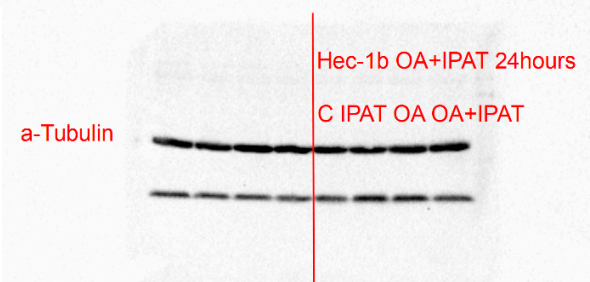
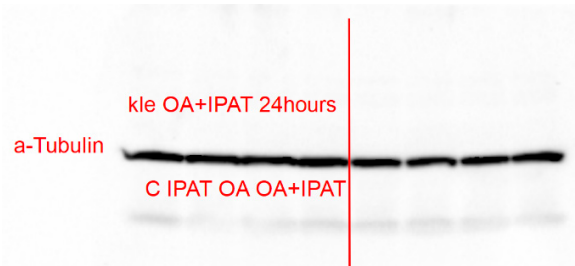
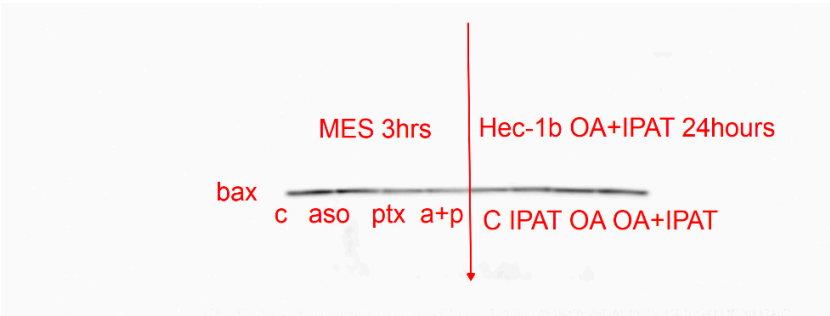
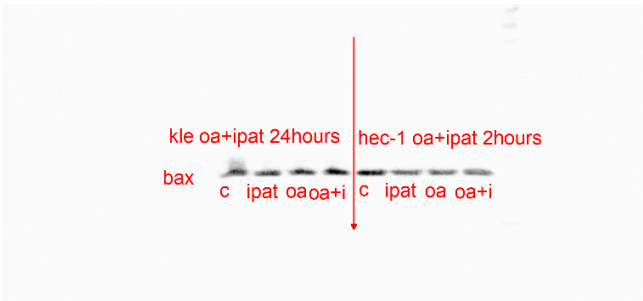


Figure S8: OA inhibited the expression of proteins related to EMT via PTEN/AKT/S6 pathways in EC cells.

