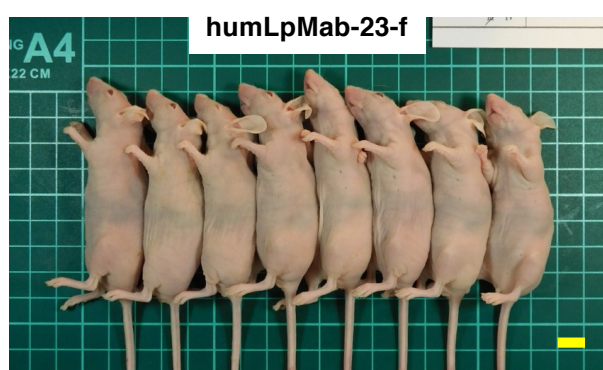
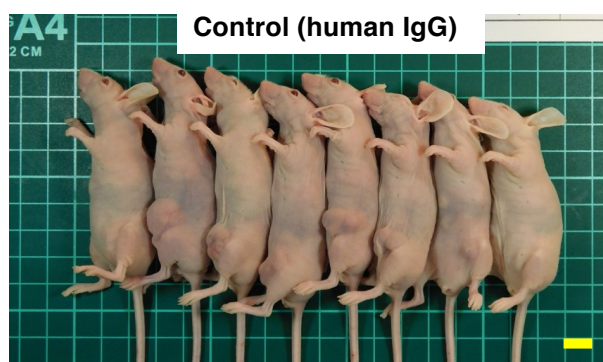
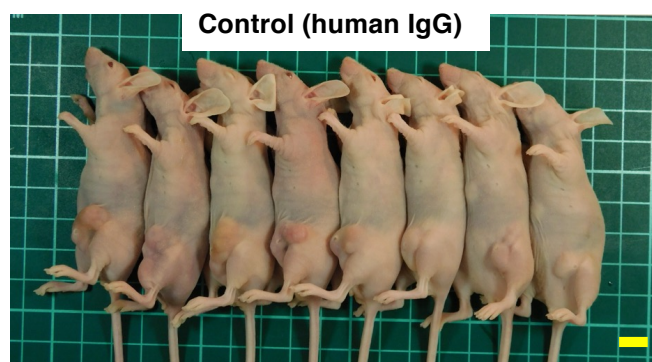
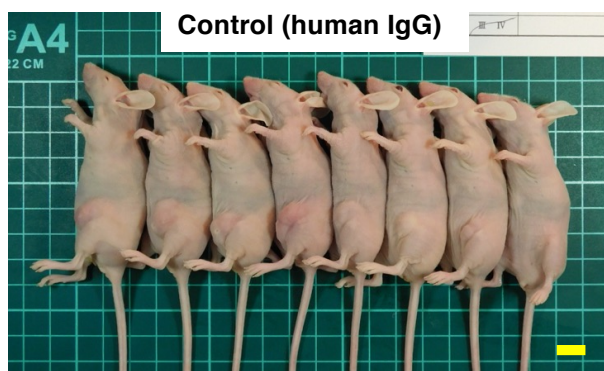
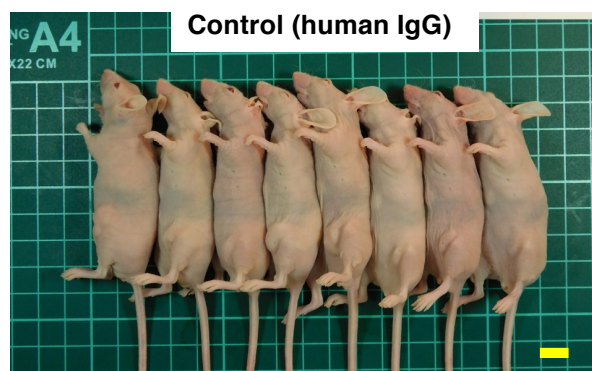
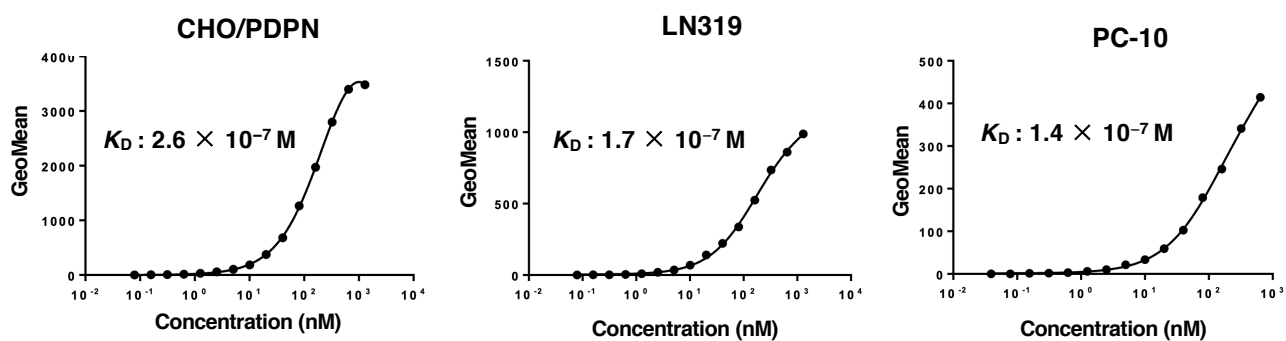


A**CHO/PDPN****B****CHO-K1**

Supplementary Figure S1. Body appearance in CHO/PDPN (**A**) and CHO-K1 (**B**) xenografts-inoculated mice treated with human IgG and humLpMab-23-f on day 25. Scale bar, 1 cm.

A**LN319****B****PC-10**

Supplementary Figure S2. Body appearance in LN319 (A) and PC-10 (B) xenografts-inoculated mice treated with human IgG and humLpMab-23-f on day 25. Scale bar, 1 cm.



Supplementary Figure S3. Determination of the binding affinity of chLpMab-23 using flow cytometry. CHO/PDPN, LN319 and PC-10 cells were suspended in chLpMab-23 at indicated concentrations, followed by the addition of FITC-conjugated anti-human IgG. Fluorescence data were analyzed using the EC800 Cell Analyzer. The dissociation constant (K_D) was calculated by GraphPad Prism 8.