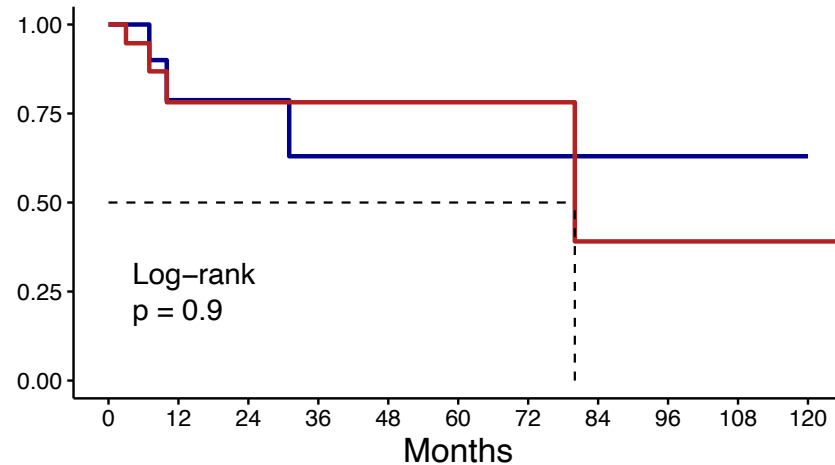


A

Local recurrence Survival

Local recurrence — Sparing surgery — Penectomy



Local recurrence

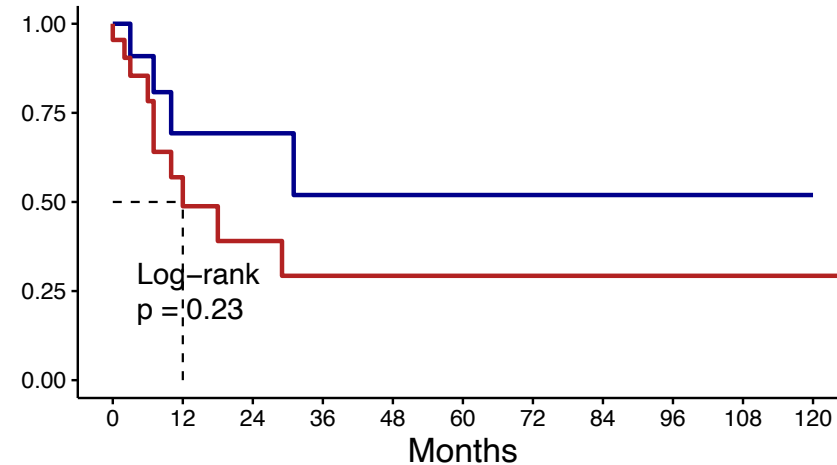
Number at risk

Sparing surgery	13	6	6	4	4	3	2	2	2	2	1
Penectomy	22	8	5	4	3	2	2	1	1	1	1
	0	12	24	36	48	60	72	84	96	108	120

B

Overall recurrence Survival

Overall recurrence — Sparing surgery — Penectomy



Overall recurrence

Number at risk

Sparing surgery	13	5	5	3	3	2	1	1	1	1	1
Penectomy	22	7	4	2	1	1	1	1	1	1	1
	0	12	24	36	48	60	72	84	96	108	120