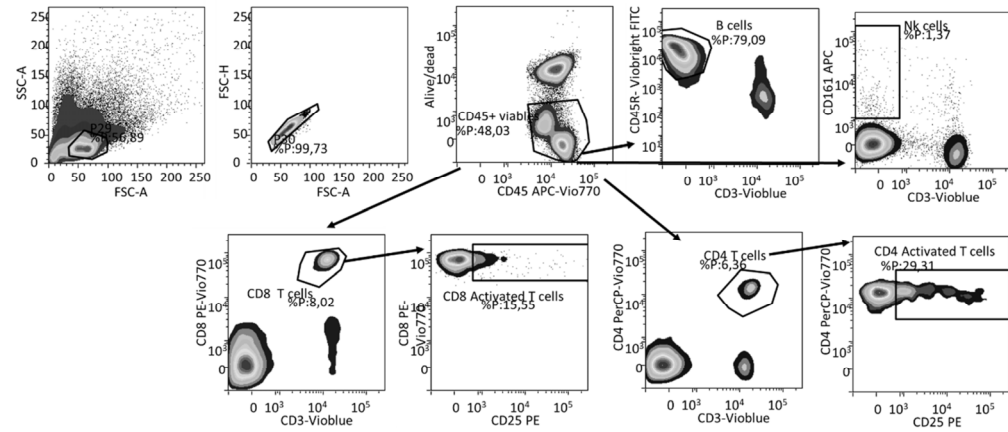
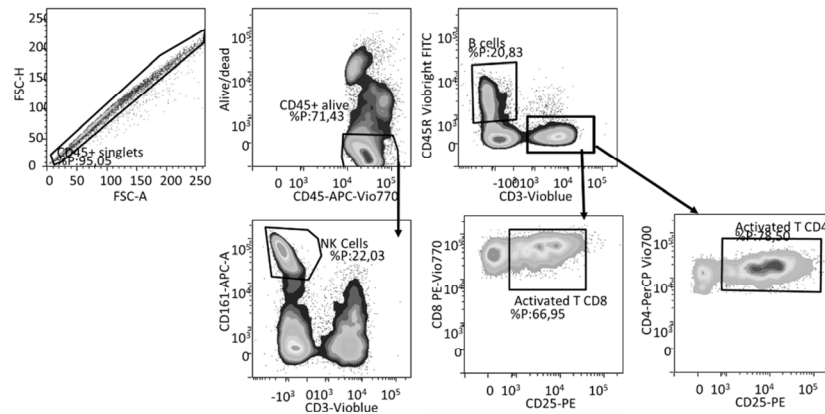


A



B



C

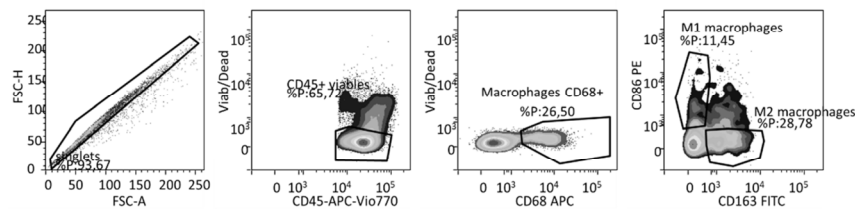


Figure S1: Gating strategy used to phenotype the different immune populations by flow cytometry. (A) Gating strategy used to identify, B cells, NK cells, CD4 Activated T cells, CD8 Activated T cells from the spleen. (B) Gating strategy used to identify, B cells, NK cells, CD4 Activated T cells, CD8 Activated T cells from tumors infiltrating immune cells. (C) Gating strategy used to identify total macrophages, M1 macrophages and M2 macrophages.

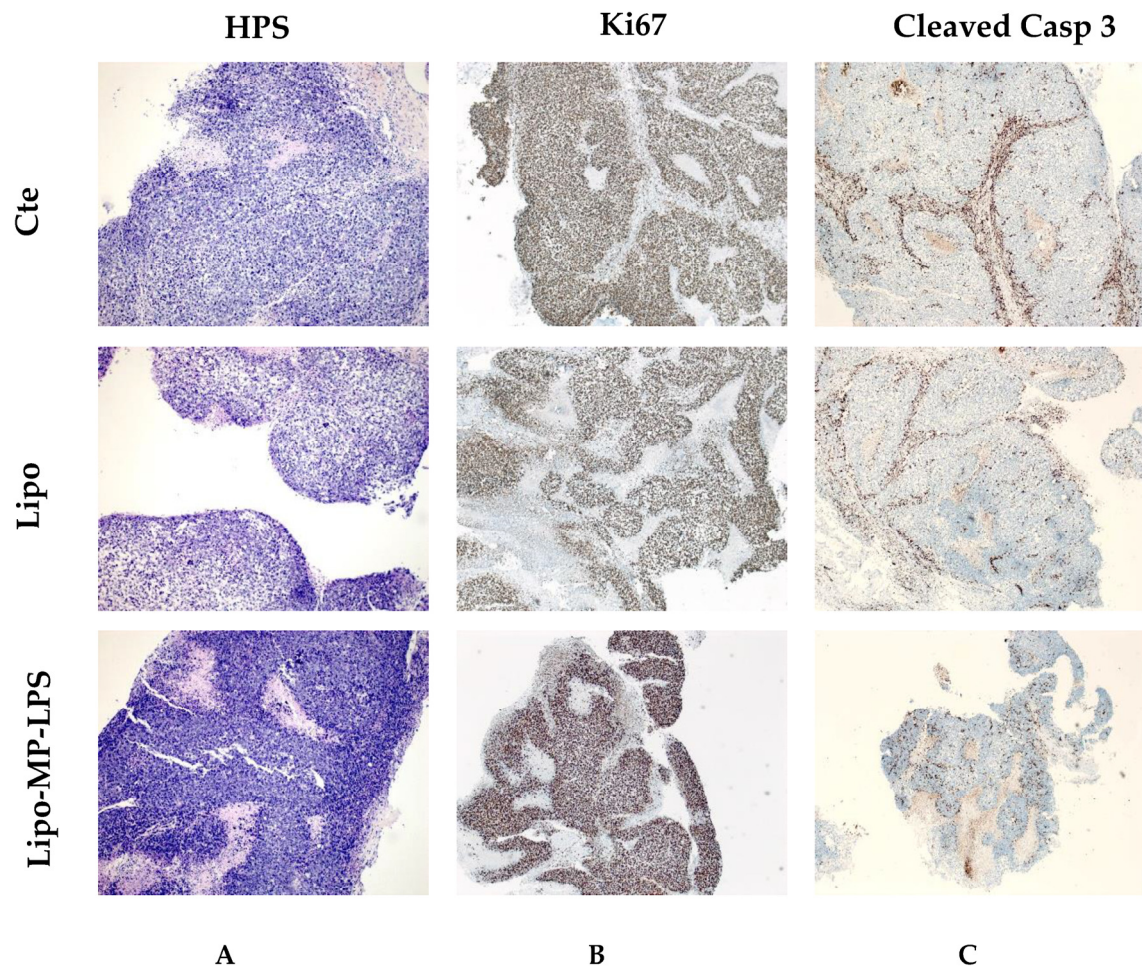


Figure S2: Lipo-MP-LPS effect on organotypic model of OsA. (A) HPS Staining of tumors. LipoMP-LPS did not modify the histological composition of tumors. (B) Immunostaining of Ki67. LipoMP-LPS treatment did not impact on the rate of proliferative Ki67+ tumor cells. (C) Immunostaining of cleaved caspase 3. LipoMP-LPS treatment did not increase the rate of cleaved caspase 3 cells indicating the absence of direct effect of LipoMP-LPS on OsA cells (Cte:273/FOV, Lipo:205/FOV, LipoMP-LPS:189/FOV).

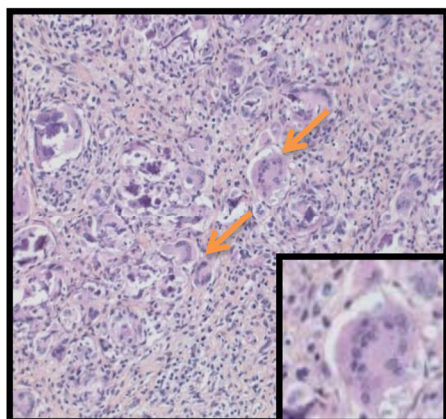


Figure S3: Detection of multinucleated giant cells (MGC) in LipoMP-LPS treated tumors. Multinucleated giant cells identified in HPS-stained slides (orange arrow). Location and morphology of these cells is concordant with osteoclasts. Magnification X20 and X40 (right bottom square).

Table S1. Markers used for flow cytometry analyses.

	Fluorochrome	Dilution	Supplier
CD3	Vioblue	1/10	Miltenyi
Viability	Viogreen	1/100	Miltenyi
CD45R	Viobright	1/10	Miltenyi
	FITC		
CD25	PE	1/50	Biolegend
CD4	PerCP-Vio700	1/10	Miltenyi
CD8	PE-Vio770	1/10	Miltenyi
CD161	APC	1/10	Miltenyi
CD45	APC-Vio770	1/25	Miltenyi
CD163	FITC	1/10	Biorad
CD86	PE	1/10	Miltenyi
CD68	APC	1/10	Miltenyi