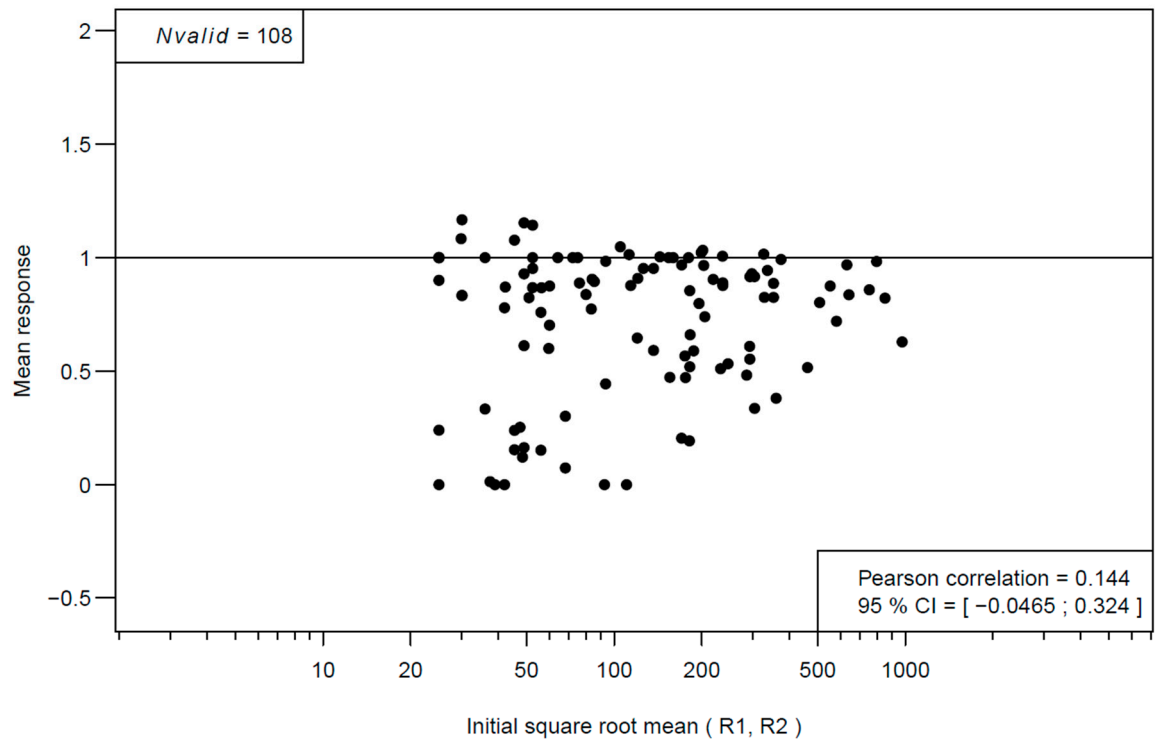


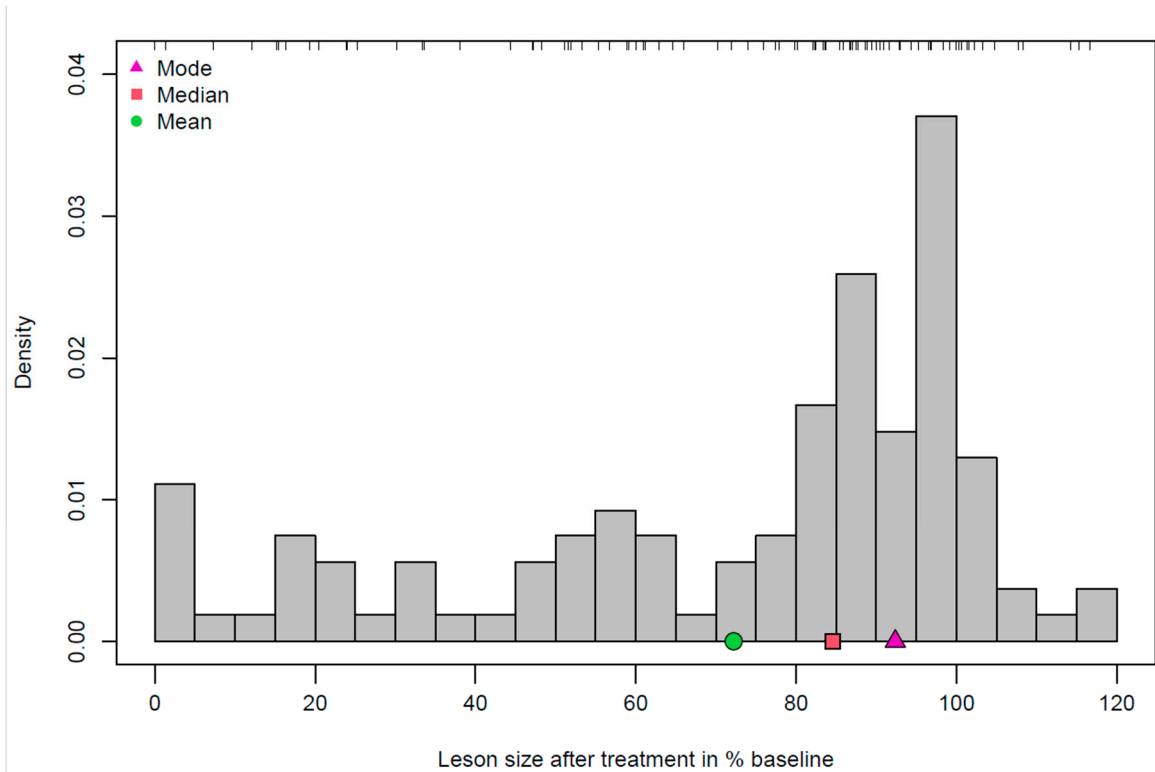
## Supplemental Figure

### Supplemental Figure Legends



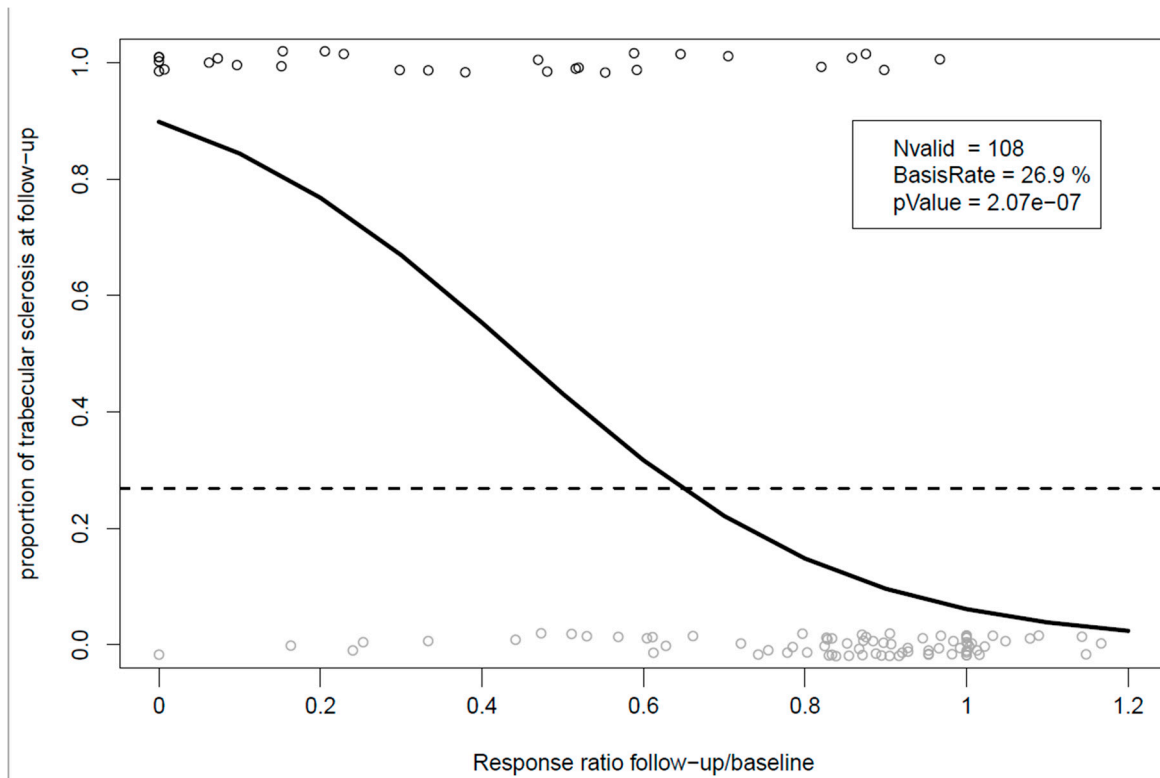
### Supplemental Figure S1

The graph illustrates that therapy response after E-KRd induction does not correlate substantially with lesion size at baseline imaging.



Supplemental Figure S2

The mean response histogram has a peak near 100% on the  $x$ -axis and a pronounced tail to the left, suggesting the presence of clearly responding lesions (>20% reduction) and essentially stable osteolyses.



Supplemental Figure S3

In logistic regression analysis, trabecular sclerosis proved to be strongly associated with lesion response in size ( $p < 0.001$ ).