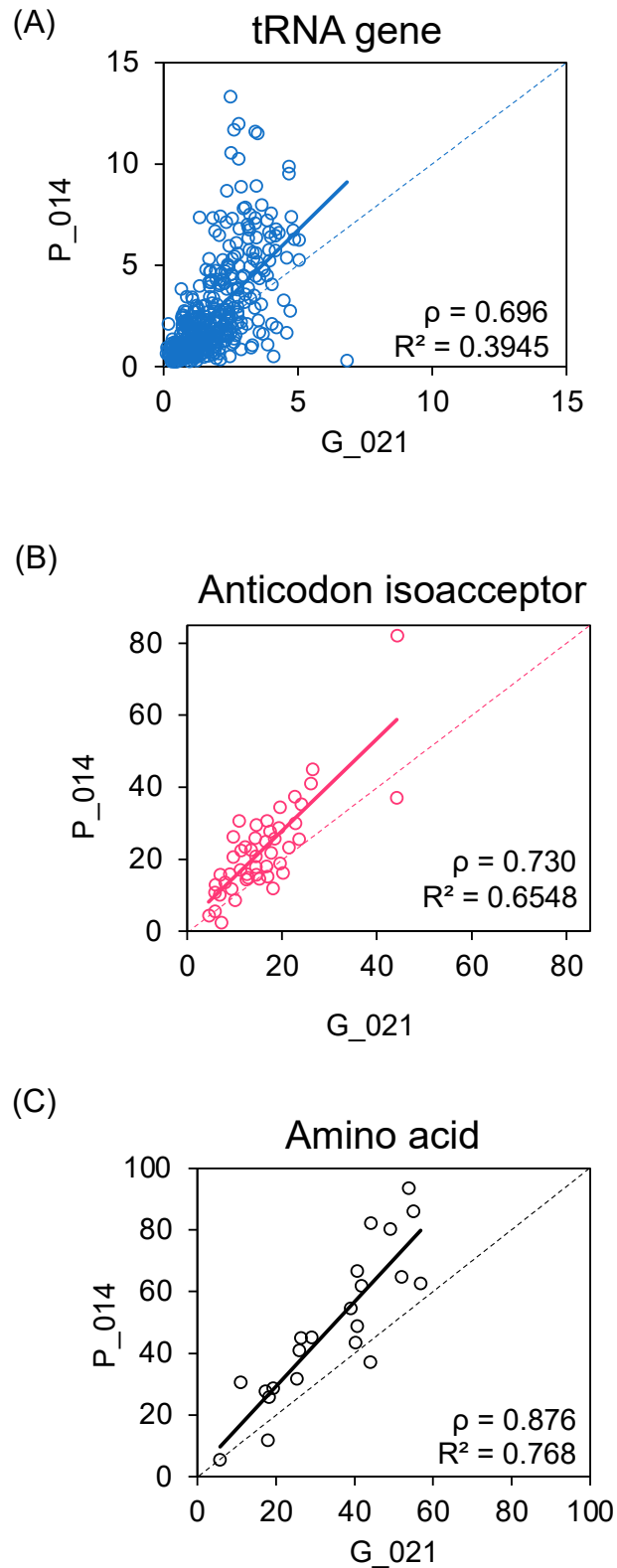
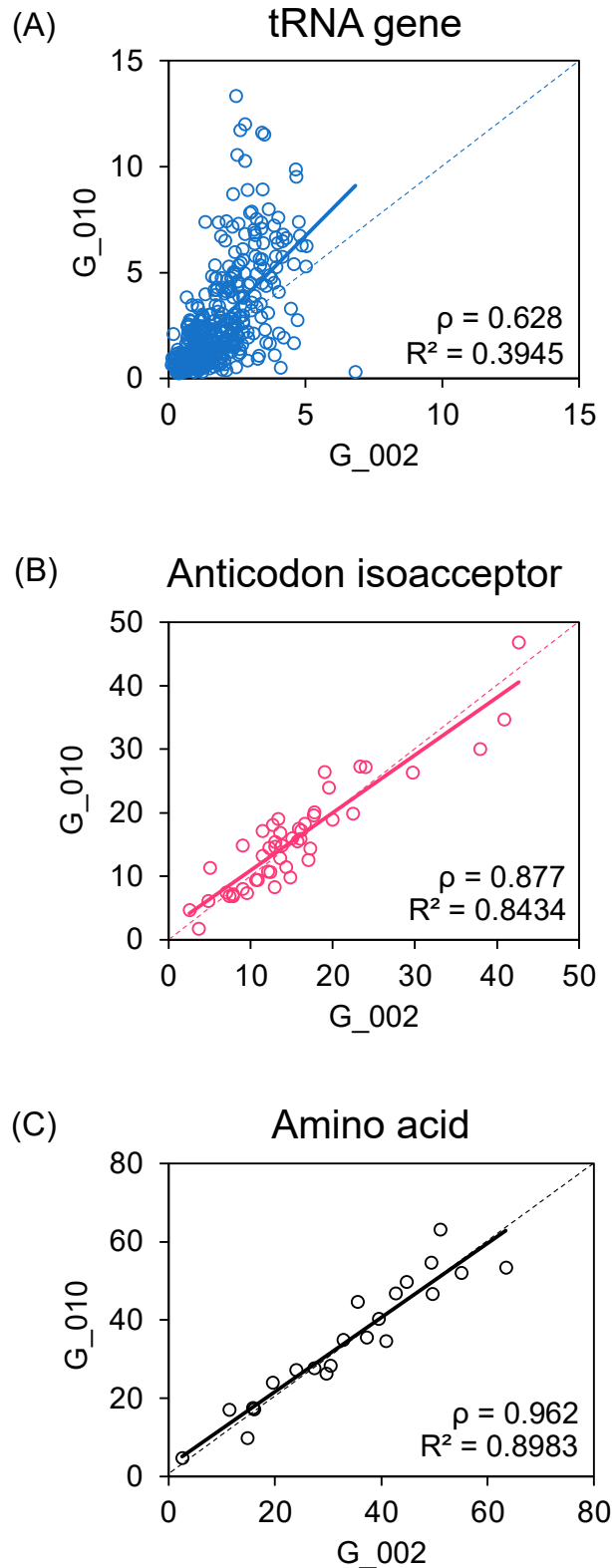


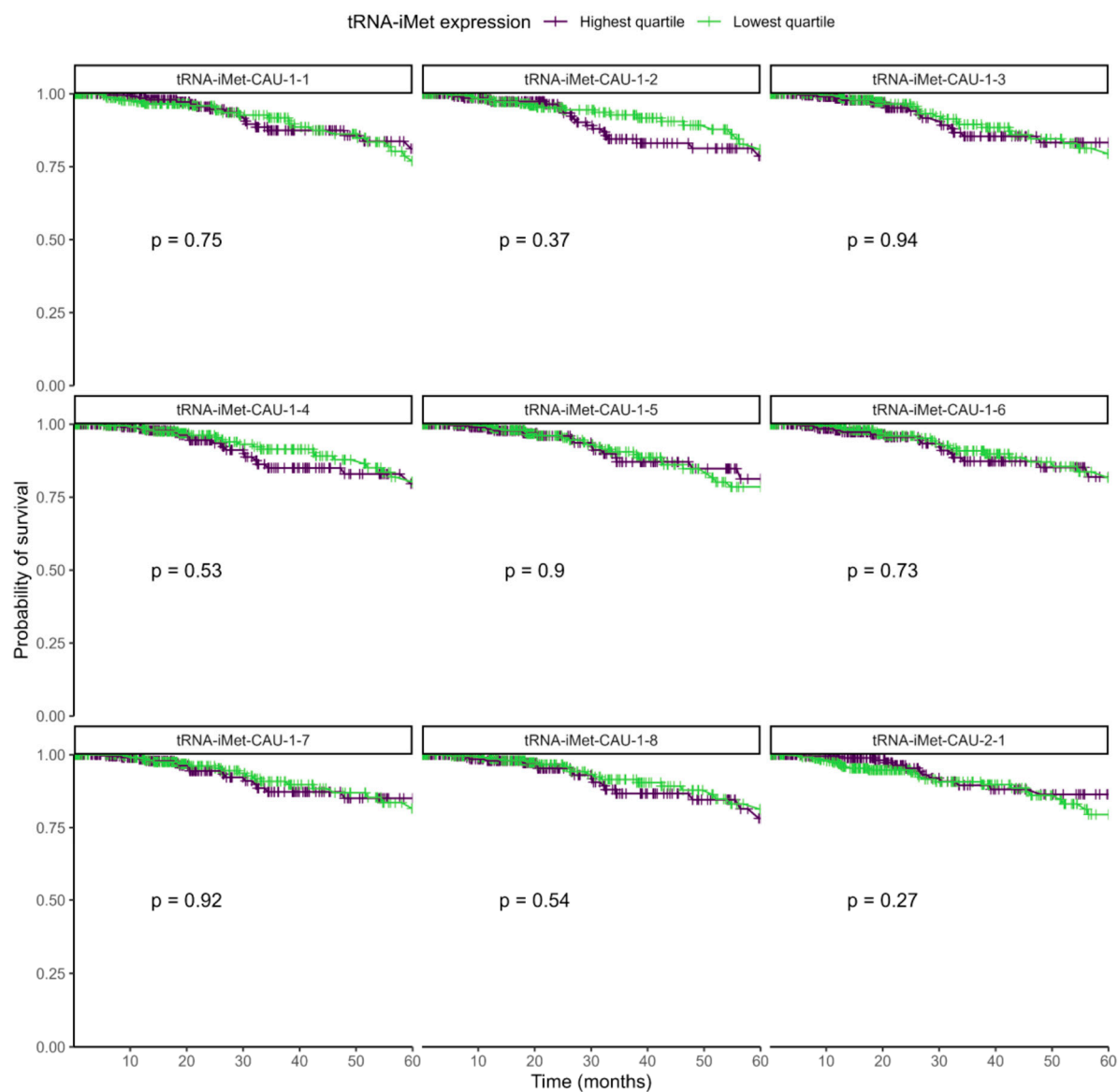
Supplementary figures



Supplementary Figure S1. Variation between cancers P₀₁₄ and G₀₂₁ of H3K27ac enrichment at tRNA genes and families. **(A-C)** Plots comparing H3K27ac Q-values at 428 tRNA gene loci **(A)**, 48 anticodon isoacceptor families **(B)**, and 21 amino acid isotype families **(C)** in primary tumours P₀₁₄ and G₀₂₁, which had overall relative H3K27ac enrichment across the 40 tumours and 428 tRNA genes of 1076 and 754, respectively. Spearman's rank correlation coefficient is shown (ρ).



Supplementary Figure S2. Variation between cancers G_002 and G_010 of H3K27ac enrichment at tRNA genes and families. **(A-C)** Plots comparing H3K27ac Q-values at 428 tRNA gene loci **(A)**, 48 anticodon isoacceptor families **(B)**, and 21 amino acid isotype families **(C)** in primary tumours G_010 and G_002, which were chosen because they share very similar overall H3K27ac enrichment across the 40 tumours and 428 tRNA genes (756 and 619, respectively). Spearman's rank correlation coefficient is shown (ρ).



Supplementary Figure S3. Survival of patients with breast invasive carcinomas expressing upper quartile (purple) or lower quartile (green) levels of each individual tRNA-iMet-CAU.