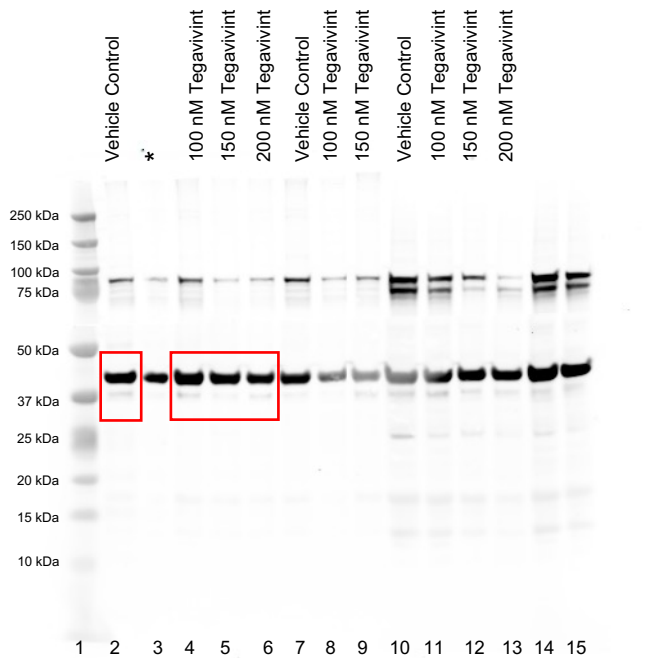


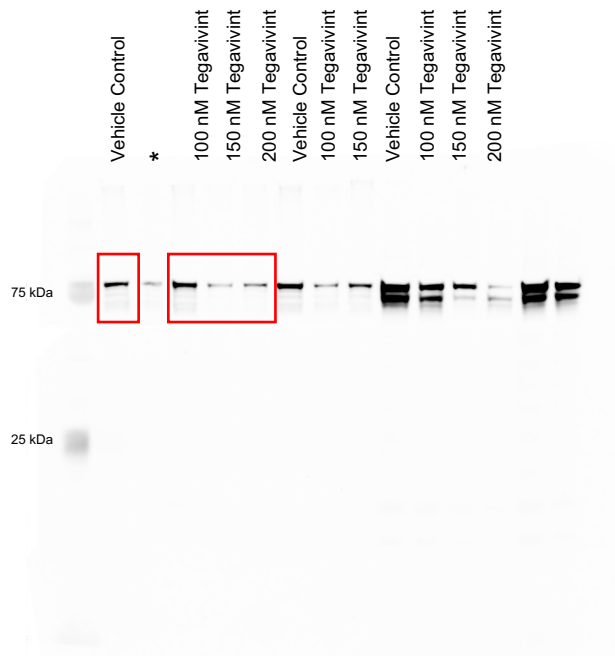
Full unedited gel imaged in two channels

Bands outlined in red are shown in Figure 3C

700 Channel: Activated β -Catenin (94kDa) and β -actin (42 kDa)



800 Channel: pan- β -catenin (94 kDa)



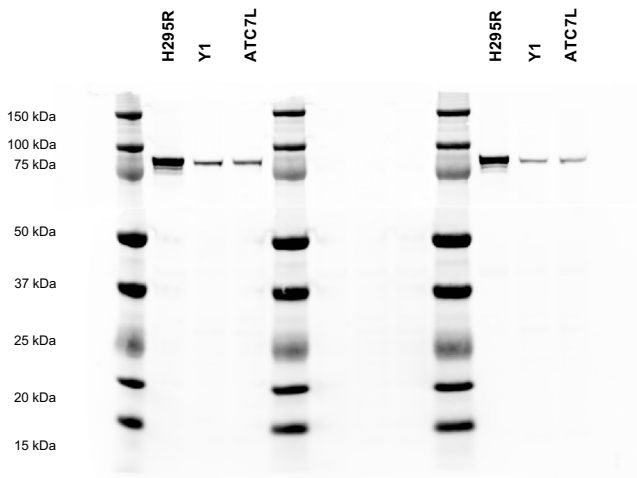
The membrane was probed with antibodies against pan- β -catenin (ThermoFisher Scientific MA1-2001, 1:1000), or β -actin (Sigma-Aldrich A-5441, 1:5000).

Rows 2-9 were extracted with RIPA; Rows 10-15 are biologic replicates extracted with a nuclear lysis protocol

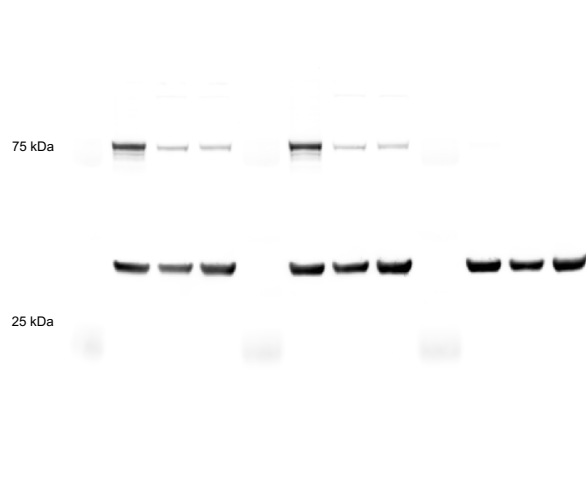
* Row 3 was misloaded and therefore skipped

Full unedited gel imaged in two channels

Active β -catenin (94 kDa)



β -Catenin (94kDa) and β -actin (42 kDa)



The left and right thirds of the membrane were probed with antibodies against Active β -Catenin (Cell Signaling #9561, 1:1500). The left and center thirds of the membrane were probed with antibodies against β -catenin (ThermoFisher Scientific MA1-2001, 1:1000). The bottom half of the membrane was probed with antibodies against β -actin (Sigma-Aldrich A-5441, 1:5000).

All protein lysates were extracted with RIPA